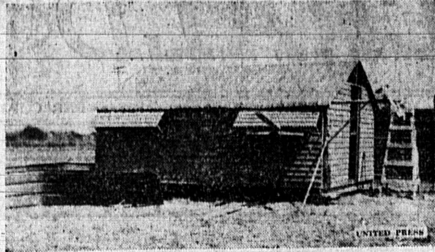


Steel Houses for Migrants



It looks like any other house its size and style, but it's the first of 150 all-steel dwellings the Farm Security Administration is building at the migratory workers' camp west of Farmersville, Cal. The houses are bolted together. The camp is unique because other FSA camps have only tent houses.

1/3 OFF On Lots During Next 6 Weeks
IN OUR NEW, Now-Being-Developed TRACT!
PACIFIC CREST • Cemetery • Mausoleum
• Crematory • Columbarium
182nd and Inglewood Ave. • Redondo Phone 2338

PUBLIC ADMINISTRATOR ORDERS 26 ESTATES SOLD AT AUCTION AUG. 31 THRU SEPT. 3

Auctions in this area rain or shine on the premises:
INGLEWOOD, Sept. 1; 11:30 A. M.
J. E. McAndrews Estate, Lots 575, 576&577, Tr. 1631. Sizes: 75x168 & 120x150 respect. SW Cor. 108th st. & Crenshaw Blvd.
TORRANCE, Sept. 1; 12 P. M.
E. Kunze Estate, Lots 748, Blk. 12, Tr. 4983, L.A. 40x147. S. side 213th st. 200 feet E. of Western. (Between Western & Harvard.)
All dimensions and descriptions, etc., are approximate. All sales are subject to probate court approval. Terms—Cash, where sales are \$100 or less; sales over \$100, 15% deposit (but minimum deposit is \$100) balance on confirmation of sale. For additional information on the 26 Estates write, wire or telephone.

W. C. O'CONNOR,
AUCTIONEER & REALTOR

Attend Our Furniture Auctions Every Tuesday
7940 SUNSET, LOS ANGELES HO. 1639

(Political Advertisement)

(Political Advertisement)



RAWLS
DEMOCRATIC
CANDIDATE FOR
ASSEMBLYMAN
60th ASSEMBLY DISTRICT
"A Big Deal at Sacramento!"
Contributed by the Democratic
Committee, 68th District.

(Political Advertisement)

(Political Advertisement)

POKER PLEA DENIED AGAIN

Altho most of the audience attending Tuesday night's city council meeting were men from outside the city who were said to be keenly interested in obtaining permits to operate legal card game places here none had anything to say when the council denied one written application for such a permit. After the meeting a woman approached Mayor William H. Tolson to question him about allowing the entry of "poker palaces" here.

"We have been refusing all such applications and until we see good and sufficient reasons for changing our opinion we shall continue to do so," Mayor Tolson told her. His questioner mentioned that "your city is losing a lot of money by not licensing the games in Torrance."

"Maybe the city is," the mayor replied, "but unless they go out of town to play poker, our residents are not."

The application for a poker permit came from a Pasadena. The council unanimously (with Councilman George V. Powell absent on his vacation) turned it down.

Call Special Meeting

There was no mention during the meeting of the proposed special bond election to decide the issue of enlarging the city recreation system by the construction of a municipal plunger, two recreation buildings and illuminated tennis courts in the city park and a recreation library building and playground for Walteria. City Clerk A. H. Bartlett said that no word has been received from the Public Works administration authorities regarding the city's application for 45 percent grant totaling \$44,562 toward the total estimated cost of \$99,030 for this expansion.

Truck Lists, Bottles Crash On Pavement

Sixteen cases of a popular soft drink fell from a truck carrying a full load when the vehicle listed sharply to port late last Thursday afternoon while rounding the corner on Carson street at Manuel and El Prado. Eight hundred bottles were in the cases that crashed to the pavement but when the debris was cleaned up the truck drivers found that only 52 bottles had been broken and spilled their contents. Six of the cases, which were made in Torrance, were smashed by the impact.

Dr. Bingham and Mitchell were the first vacationists to go over two passes which were blocked by snow for cattle. They carried enough concentrated food to permit each one two pounds of sustenance per day and this proved satisfactory. They came out at Lone Pine with only about a meal left in their packs.

The Mt. Whitney Pass ran less than two miles below the top of that towering pinnacle, the hikers left their packs beside the trail and scaled the peak to its summit. They had an excellent view from that altitude because the day was unusually clear. They walked over four 12,000-foot passes in the first four days, one 13,000-foot drive on the

Jealous Husband Shoots Wife's Benefactor



Charles E. McDonald, 30 (shown at right being "frisked" by a policeman), provided the latest Hollywood sensation when he shot down Mrs. Emila Krueger, wife of Kansas City Symphony Orchestra Conductor Karl Krueger on busy Hollywood Blvd. McDonald surrendered to police, claimed Mrs. Krueger's attentions and benefactions had alienated the affections of his wife, Mrs. Frances McDonald (left), who recently filed suit for divorce. Mrs. McDonald was a maid in the Krueger home. Two of four bullets fired struck Mrs. Krueger, seriously injuring her.

Bingham and Mitchell End 135-Mile Hike Over Sierras Tuesday

"... And we didn't waggle our thumbs in the air once to get a lift—it wouldn't have done us any good," Dr. R. A. Bingham told a Herald reporter this morning in giving the highlights of the hike he completed Tuesday with Don Mitchell over six passes of the snow-bound High Sierras.

"We saw a few pack trains winding up the west side of the mountains as we were coming down but otherwise we had the whole country to ourselves."

Dr. Bingham and Mitchell covered the 135-mile trek from Florence Lake, east of Fresno, in daily hikes that averaged between 16 and 17 miles. They walked as much as 22 miles one day and that was over a 13,000-foot pass. Starting in at an elevation of about 8,000 feet, the two local men carrying 60-pound Alaskan type packs, went up to as high as Mt. Whitney's granite top—14,500 feet.

Scale Mt. Whitney
"We did not have any trouble at all," the dentist said. "The altitude did not bother us because we spent two days reaching 11,000 feet. Our packs were well-balanced and the weather, except for a couple of hailstorms, was good. Fishing was fair but some of the nights were pretty cold. We had to break ice in creeks in the mornings to get to water."

Dr. Bingham and Mitchell were the first vacationists to go over two passes which were blocked by snow for cattle. They carried enough concentrated food to permit each one two pounds of sustenance per day and this proved satisfactory. They came out at Lone Pine with only about a meal left in their packs.

The Mt. Whitney Pass ran less than two miles below the top of that towering pinnacle, the hikers left their packs beside the trail and scaled the peak to its summit. They had an excellent view from that altitude because the day was unusually clear. They walked over four 12,000-foot passes in the first four days, one 13,000-foot drive on the

Delicious! ... Tasty! ... Different! ... Inexpensive!
Fried Shrimp Combination Dinner
Cherry Blossom Chop Suey Parlor
1314 Sartori Avenue Geo. Kakida

(Political Advertisement)

Jurist Has Had Wide Experience



JUDGE LESLIE STILL... qualified by career

Dock worker, farmer, playground director, flying instructor—all those activities entered into the experiences of Superior Judge Leslie E. Still during the course of a varied career that placed him finally in Los Angeles county's highest judicial office. He is a candidate for re-election next Tuesday. Litigation in his court brings before Judge Still few human problems that he did not face from the time he carried papers in Long Beach until he entered law practice.

150 ATTEND RALLY HERE

A political rally last night in the Civic Auditorium, sponsored by campaign workers for a number of candidates, drew less than 150 spectators. The auditorium had been rented for the occasion by a group supporting John Dockweiler, gubernatorial aspirant for the Democratic nomination, and he was one of the speakers introduced by John V. Murray, city councilman.

About eight candidates addressed the small assembly while their workers distributed a large amount of campaigning literature.

fifth day and then made the Mt. Whitney trek on the sixth day.

(Political Advertisement)

VOTE FOR...
LEE E.

GEYER

"THE FIGHTIN' SCHOOLMASTER"
FOR CONGRESS

He is the liberal that Roosevelt wants!

LEE E. GEYER
SCHOOLMASTER

(Political Advertisement)

(Political Advertisement)

Fiesta Bid Carries Old Time Greeting

"There will be a barbecue and ample feed and water for your horses" read an invitation received by the city council Tuesday night from San Gabriel for the Fiesta Sept. 8-11.

Councilmen indicated that if they accepted the bid, they would not extend San Gabriel's hospitality to include their horses.

DETOUR

Col'm Under Construction
By BETSY BYRNES

"All the world's a stage;
And all the men and women
merely players."

QUESTIONS
At the top are some very familiar lines. Who was the author of them?

What is the longest river in Europe?

Most people like drupes. What are they?

TODAY'S PROVERB
"In life as in cards, the glory is not so much in the winning as in playing a poor hand well."

—Josh Billings
Josh Billings has left us some very fine, homely sayings. By the way, his real name was Henry Wheeler Shaw.

ANSWERS
Shakespeare penned those lines at the top and they appear in "As You Like It."

Well, the longest river in Europe is the Volga. The good old Volga, so familiar to radio listeners, is 2,280 miles in length.

You, too, probably like drupes, even though you don't know them by that name. Drupe are stone fruits, such as peaches, cherries or plums.

ADIOS
"Labor with what zeal we will,
Something still remains undone
Something uncompleted still
Waits the rising of the sun."

—Longfellow.

Primary Bans Liquor Sales

Warning to all liquor licensees to obey the law forbidding the sale of alcoholic beverages on election day, Aug. 30, is given by the State Board of Equalization. Not only is the sale of liquor banned when the polls are open, but it cannot be given away or furnished.

Section 59 of the Alcoholic Beverage Control Act reads: "Every on-sale or off-sale licensee who sells gives away or furnishes any alcoholic beverage in any election district or precinct in any county in the state where an election is in progress, during the hours when the polls are required to be kept open for voting (6 a. m. to 7 p. m.) shall be guilty of a misdemeanor."

The Herald—3 months, 50 cents.

(Political Advertisement)

MORE NEWS OF OIL ACTIVITY IN SURROUNDING FIELDS

(Continued from Page 1-A)
week were: Emerald Oil which tapped a new pocket in gun-perforating last Thursday afternoon at its Barto No. 2 on 24th reported the well responded for a flow of 500 barrels a day for several days. But the well is now down to around 90 barrels, according to field reports.

Extending the proven area one block south, J. L. O'Donnell finished his No. 42 located on 238th about one and one-half blocks east of Pennsylvania for an unestimated yield. Foundation has been laid for No. 43 and a rig is up for No. 44. Imperial Gypsum and Oil completed its No. 2 at the southwest corner of Narbonne and 229th for a yield of 135 barrels per day of oil and water.

Wells scheduled for completion in the next few days are the rebooring of the Torrance Petroleum's Meacham No. 1 where casing collapsed, and gun-perforating of the Patton-Neil No. 1 for better production. Flat Oil's No. 1 on Pennsylvania between 235th and 236th is due as is C. L. McWerther's No. 1, located on 238th a half-block east of Pennsylvania. Palma Oil's Houts No. 1 on 235th one location west of the Cal-Oak well, is also scheduled to show oil soon.

Harbor City Race On
Production in the South Torrance field continues to show a decline with many operators reporting that wells which were completed a month ago for yields up to 750 barrels are now producing around 200 barrels. Field scouts believe that the best production lies southwest on Standard's Marble lease which is west of the Silver Strand project and Wilton Oil's two large producers.

In the Harbor City-Lomita area two drilling crews are setting casing at separate wells in an unofficial race to have the second well to produce in that district from the 5,000-foot zone. Isco Petroleum reached oil sand at their 252nd and Marigold project and Neal H. Anderson drilling the California Star at Armand and Frampton is also in the race. Isco is setting casing at 5,140 feet. Total depth is 5,313 feet.

The belief was expressed this week that the Star's Lermes No. 1 has found the bottom of the D and B zone southwest of General Petroleum's Fogel lease. The Lermes is reported as having cored 170 feet of saturated sand down to 5,275 feet.

New Derrick Locations
New construction started this week in the South Torrance field included erection of six

new derricks and the placement of eight large oil tanks. The derricks are being rigged as follows: R. L. Goetz, Los Angeles for his Monica No. 1 at 2379 235th; Amron Oil corporation at 2248 231st and a two-room office building at the same location.

Silver Spray Oil company is erecting its No. 2 rig at 2439 236th; Kovell Oil company has its No. 3 under construction at 2455 236th and No. 4 at 2359 235th. C. H. Lebow of Los Angeles is building a steel derrick at 1962 235th.

New tanks are being put up by the Freeman Holding company of Long Beach—two 1,000 barrelers at 23522 Pennsylvania, \$1,807; Butch McWerther of Long Beach—two 1,000-barrel welded steel containers at 2349 235th, \$1,600; Day and Dille of Torrance—two 500-barrel bolted oil tanks at the northwest corner of Eschelman and 233rd, \$500, and S. R. Dunphy—two 500-barrel second hand containers at 2329 235th, \$500.

PURITAS
DISTILLED DRINKING
WATER
DRINK WITH A REASON
CALIFORNIA'S PUREST
DRINKING WATER
USE WITH A REASON



Here's a
way to keep
baby's bottle
sterile and
stainless

Sterilize baby's milk and water bottles with Puritas. Being germ-free, Puritas leaves no residue on the bottles. It keeps them looking like new. For your baby you can afford the best. Use Puritas for baby's bath, too. No harsh, raw minerals to irritate baby's skin.

AND FOR BABY'S
BOTTLE, PURITAS
needs no boiling
before drinking
Puritas is accepted by
the American Medical
Association Council on
Foods.

ALL GLASS
The Puritas Hydro-
Cooler has an
all-glass water
cooling compartment.

PURITAS
DISTILLED DRINKING WATER
Home-delivered in
5-gallon bottles

For Service Phone
Samuel Pinkerton
Torrance 213

We Need Better Court Service for Torrance and Lomita

And the way to get this service is to elect a Judge
from this section of the Township!!



CAST YOUR VOTE FOR
Torrance C.
WELCH

for
Justice of the Peace

OFFICE No. 1
INGLEWOOD TOWNSHIP

- An Able Lawyer
- Experienced Businessman
- Fair, Courteous
- Prompt, Efficient!

Torrance C.
WELCH JUSTICE OF PEACE
OFFICE No. 1



FOOD PRICES WAY DOWN!

SHOP HERE and SAVE!

ROUND T-BONE RIB SIRLOIN **STEAK 24c** lb.

TILLAMOOK No. 1 Grade CHEESE...lb. 24½¢
CHOICE RIB PORK CHOPS...lb. 24½¢
GOLDEN WEST PEANUT BUTTER...2 lbs. 21½¢
MORRELL'S TENDER PICNIC HAMS...lb. 21½¢
Morrell's Palace SLICED BACON lb. 19¢ 2 lbs. 35¢

Fryers, ea. 25¢ • Fat Hens, lb. 22½¢
CHOICE RIB LAMB CHOPS...lb. 10½¢
CHOICE LAMB STEW...lb. 7½¢
CHALLENGE MILK...qt. 9¢ 2 qts. 17¢

CIVIC CENTER MKT.
CUT RATE CRAVENS and POST CUT RATE