

New Orleans Type Home Framed in Redwood

Why Pay Rent? IT'S VASTLY CHEAPER TO OWN YOUR OWN HOME!

• Take Advantage of the New FHA Loan Plan. All You Need is 10% of the Total Valuation of House and Lot!!!

BUILDING MATERIALS ARE LOW!
Now is the time to build a new home, or to repair or add to your present home under Title 1 of FHA!
... will gladly and without charge co-operate with you in compiling costs and estimates to present to your banker for a loan!

Torrance Lumber Co.
1752 Border Ave. Phone 61

HELP WANTED — TURN TO THE CLASSIFIED PAGE

Fix Up Your Home with an FHA Loan

- Modernize
- Repair or
- Recondition

Don't let the lack of ready cash prevent you from re-painting and otherwise reconditioning your home. A small sum spent on necessary work now may protect you against more costly repairs later.

TORRANCE NATIONAL BANK
"Your Community Bank"

INTEND TO WED

Robert A. Hale, 22, of 1437 220th, and Maxine J. Chambers, 19, of 6211 1/2 South Vermont avenue.

Clare J. Reeves, 24, of Lomita boulevard, and Eshelman, Lomita, and Martha V. Adeock, 17, of 2264 Maricopa.

SUBSCRIBE TODAY!

The Torrance Herald carries all the news. Don't be an "outsider" — Subscribe today!

NOW BUILDING IN TORRANCE HEIGHTS

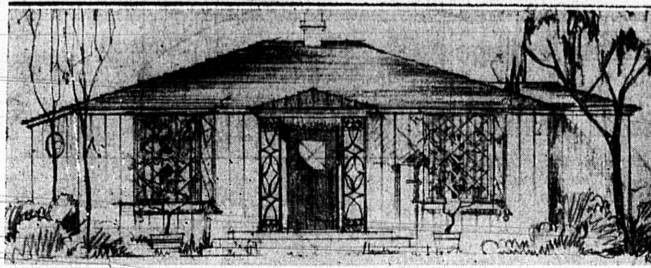
• Second Unit In Our Small Farm Tract... The Home-You've Always Wanted on 1/2 acre at a Price You Can Afford. DRIVE OUT SUNDAY AND INVESTIGATE!

Go East on Carson—Turn North on Figueroa to 21317.
Mrs. Grace Eberly, Subdivider



Building Cost Held Down by Compact Five-Room Plan

ORNAMENTAL IRONWORK USED ON OPENINGS



AREA: 824 sq. ft.
COST: \$2,800

An adaptation of the New Orleans style of architecture in a small, moderate cost house, is shown in the accompanying illustration—designed by Irvin S. Walker, architect.

The house is designed to be constructed of California redwood, in vertical siding, with a roof of wood shingles. Interesting treatment of the doors and windows is provided by the use of ornamental iron work.

In the interior arrangement economy of space as well as of material has been thoughtfully considered, resulting in a compact but complete plan at a minimum expense.

The entry opens directly into the living room, from which access is obtained to the utility rooms and to the bedroom. The living room features a comparatively large open fireplace and windows on two sides.

Shows Judicious Planning
The dinette is small but cheerful, with the outer wall space entirely taken up by windows.

In the kitchen is interesting placement of the range and refrigerator on the inside wall with space for a cabinet and work table between the two units. The sink occupies the outer wall, underneath the window, with cabinets at either end and below it. A built-in ironing board is also provided.

The service porch includes space for a washing machine and laundry trays, a broom closet and the water heater. The bedroom arrangement has these two rooms isolated from the rest of the house by the judicious planning of the hall areas.

GRATIS GRINDERS

Free false teeth for indigents, made by unemployed dental technicians, loomed as a possibility this week as the county board of supervisors considered a recommendation that they sponsor such a WPA project.

The cheerful position of being able to announce considerably more building activity during the past three months than in the similar period last year.

Emphasizing that this region is the "white spot of the nation," 76 Southland localities reported \$41,417,845 of new construction in the three months, \$3,358,751 more than 1937's first quarter. Los Angeles with its total of \$15,357,613, an increase of 11.8 percent, leads the building parade, followed by Long Beach (\$2,759,240 as against \$1,664,515 a year ago) and then comes Torrance.

In fourth place is San Diego (\$1,734,745), fifth is Glendale with \$1,073,019.

TORRANCE RANKS THIRD IN S. C. BUILDING FOR QUARTER

"Torrance gives promise of surpassing any city of its size in the world this year in dollar volume of building permits."

That's what Charles C. Cohan, real estate editor for the L. A. Times, wrote in his lead article last Sunday. He had received a report, published March 31 in The Herald, that the three-months total of new construction here amounted to \$1,998,000, as compared with \$77,020 for the corresponding first quarter of 1937.

"This also is powerful evidence," he continued, "of Southern California's industrial growth, for the new oil development and expansion of refinery activities in the Torrance area are largely responsible for the permit-valuation increase there."

Phone for 350 SHEET METAL WORK

- MACHINE GUARDS
- BLOW PIPE
- VENTILATION
- SKYLIGHTS
- TANKS
- PANS

Columbia Sheets Used Exclusively

Torrance Sheet Metal Shop
Robt. T. McCallum
1418 MARCELINA

HOMES FOR SALE

\$1500 Buys 3 room house with bath, oak floors, garage. Lot 50x180 fenced. \$250 down, \$17.50 month!

\$2500 Buys good 5 room frame on Cota. \$400 down, \$21 per month, plus interest at 6%. This is a good buy!

\$2500 Buys large 5 room frame on Amapola. Large service porch, east front. Lot 50x140. Paving paid. \$500 down, \$30 per month!

\$2500 Buys 5 room frame on corner lot on Arlington. Fireplace, large service porch. \$350 down, \$30 per month, including interest!

\$2500 Buys large 5 room house with oak floors, corner lot 56x150 on paved street \$500 down, \$30 monthly. This is a real bargain!

\$2500 Buys good 5 room house on Gramercy. In excellent condition. \$500 down, \$30 per month!

\$3150 Buys a fine 5 room stucco house with oak floors, concrete driveway, house just recently reconditioned. Lot 40x150 fenced. \$500 down, \$35 monthly. A dandy buy!

Torrance Investment Co.
1409 SARTORI AVENUE PHONE 476

Home Show at L. A. April 21; Many Exhibits

(C.N.P.A., Service Inc.)
Twenty-five percent of the people of Southern California are dependent on the home building industry for their livelihood and to stimulate the building of homes civic leaders of the Southland are sponsoring a mammoth Home Show to be held in the Pan Pacific Auditorium, Los Angeles, starting April 21 and running for 11 days.

It will be a complete exposition of the products of more than 150 concerns making or distributing building materials, home equipment and furnishings, with the respective displays so designed as to educate the public on the improved quality and lower prices of modern home-building necessities.

A unique feature of the show will be a complete home built within the auditorium. It is to be a model home designed by an architectural committee to meet the requirements of the average wage earner. It is to be a five-room dwelling of the modified California type and is to be fitted with most of the conveniences and comforts found in pretentious homes. Special attention has been given to placement of lighting outlets, heating and ventilation. The home will be available on F.H.A. terms for less than \$30 per month.

There will be daily meetings of the Housing Congress during which national authorities on home building and furnishing will be speakers, and a special program of daily events is being arranged. The show is sponsored by the Building Con-

First Voter Travels 125 Miles to Cast Ballot

Proudest voter, in Torrance Tuesday was one who traveled 125 miles to cast his ballot here. He was Dale Howe, who is now working in Taft. He became eligible to vote this year and was determined to exercise his American franchise at the first opportunity.

So he came to Torrance, his home city, to mark his initial ballot, and then turned around and drove back to Taft.

Violin Made From Paper
LONDON (U.P.)—A British soldier stationed in Egypt has been granted three months' special leave to come to England to patent a paper violin made from compressed sheets of cartridge paper.

tractors Association of Southern California with the cooperation of the Realty Board, Chamber of Commerce and the Federal Housing Administration.

FHA LOANS

TITLE NO. 1. Unsecured.
For remodeling, repairs or additions to your home, call at the Consolidated Lumber Co., as we are now prepared to negotiate your loan in our own office without any delay.

Consolidated Lumber Co.
TORRANCE

TOM WATERS

5-Room House on Andreo St. \$2500.00
5-Room Stucco, like new \$3000.00
5-Room House on Gramercy \$2500.00
Building Lots \$150.00 — \$250.00 — \$400.00 — \$500.00
\$1000.00 — \$1250.00
These lots are cheaper than the assessments that have been paid on them!

1203 EL PRADO PHONE 686

PAINTING • PAPERHANGING John R. Richhart

"In Torrance Since 1917"
• Artistic Workmanship
• Best Quality Materials
• Reasonable Prices
Estimates Cheerfully Given
1811 GRAMERCY AVENUE
Phone Torrance 71



Select Your LOT Now!
\$150 \$350 \$500 \$1000

Buxton

1960 TORRANCE BLVD. PHONE 172

ELECTRICAL CONTRACTING

TORRANCE ELECTRIC SHOP
1421 MARCELINA AVENUE PHONE 567

TORRANCE PLUMBING CO.

• GUARANTEED PLUMBING REPAIR SERVICE •

Servel Electrolux Refrigerators
Andrews Wall Heaters • **Fraser Floor Furnaces**

Magic Chef Gas Ranges
General Water Heaters

MODERNIZE NOW WITH NEW PLUMBING ON FHA

F. L. PARKS OPPOSITE POST OFFICE
PHONE 60 1418 MARCELINA AVENUE

Happiness Ahead!...



Now You Can
Give Them a Home
of Their Own with
Payments Less Than Rent!

EVERY family is happier... every woman better protected... every child has a better chance to grow up with an active social life... every father feels he has fulfilled his responsibility to his family... when they own their own home! Under the newly liberalized FHA terms you can borrow up to 90% of the value of the house and lot... and pay off the loan in payments LESS THAN RENT. For instance, on a \$4000 property you can borrow \$3600 and the payments may be as low as \$27.50 per month... including interest, principal payments, insurance and taxes.

That's why MORE PEOPLE ARE BUILDING HOMES than at any time in history... because never before have they been offered anywhere near these attractive terms. Don't delay until too late. Begin NOW to plan your NEW HOME. Free help and information is available at the...

Better Housing Committee
TORRANCE CHAMBER OF COMMERCE

1345 EL PRADO Next to Civic Auditorium PHONE 881