



• Lenten fish buyers will find the widest, freshest selection of fish in town at Grubb's. Rushed ocean-fresh to our market EVERY DAY, Grubb's Fish is sure to be sweet-tasting, palatable and delicious.

Make it a point to buy your Lenten Fish at GRUBB'S!

GRUBB'S MARKET
CHOICE MEATS
PHONE 779-TORRANCE
IN SAFEWAY STORE 1929 CARSON ST.

Rail Veteran, 81, Helped Many to Rise to Top

CLEVELAND (U.P.)—After 61 years of railroading, gray-haired De Witt Clinton Moon has been taking life easy and relaxing among memories of "young-men" he helped to top rungs on the rail ladder.

The 81-year-old veteran who once was directly responsible to Chauncey Depew, late president of the New York Central railroad, can count high officials among his "protégés."

These present-day chiefs include Frederic Williamson, president of the New York Central; Charles Denny, president of the Erie; and Frank Schaff, New York Central vice president.

\$25.00 Reward

Will be paid by the manufacturer for any CORN GREAT CHRISTOPHER POSITIVE CORN Cure cannot remove. Also removes Warts and Calluses. 35c at RB Cnt Bate Drug. Adv.

H. S. Assembly Hall Under Construction

(Continued from Page 1-A) revealed the following facts about the assembly hall:

It will be constructed of reinforced concrete throughout with steel roof trusses bearing concrete roof slabs.

Provision is made for a large projection room and latest type motion picture screen.

The stage will be 40 feet wide, framed in an attractive proscenium arch designed in the modern manner that is typical of the whole building.

Three Sculptured Panels Boys' and girls' dressing rooms, located on opposite sides of the stage will be located in a basement, as will costume rooms and lavatories.

There will be three main entrances on the north side of hall—to a foyer 20 feet wide by 65 feet long.

Three sculptured panels cast

Urge Housewives to Ask Solicitors for 'Blue Cards'

(Continued from Page 1-A) other material deemed of special interest. If the committee finds the project worthy, a "Blue Card" is issued. If, on the other hand, the solicitation is judged without merit, no card is issued and the solicitor must go without.

"Have you a 'Blue Card'?" has become one of the first questions asked by local merchants, industrialists and professional people when asked for funds by local or outside persons. Those who have given assurance of their merit are then given an opportunity to explain their proposal. If the solicitor admits he or she bears no "Blue Card" the reception is either abruptly terminated or the interview proceeds with "two strikes" called on the solicitor before he or she begins a sales talk.

In concrete will decorate the entrance. The ceiling of the hall will be colorfully decorated and the entire site landscaped to conform to the campus plan.

IT IS DANGEROUS It is dangerous to sell a SUBSTITUTE for 666 just to make three or four cents more. Customers are your best assets; lose them and you lose your business. 666 is worth three or four times as much as a SUBSTITUTE.

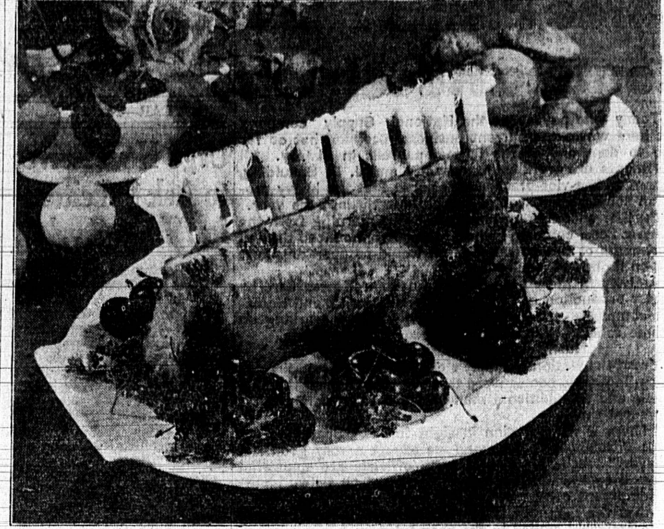
Torrance Herald
And The Lomita News
Published Every Thursday
Grover C. Whyte
Editor-Publisher
1336 El Prado Phone 444
Torrance, Calif.

Entered as second class matter January 30, 1914, at post office, Torrance, Calif., under Act of March 3, 1897.

Official Newspaper of City of Torrance

Adjudicated a Legal Newspaper By Superior Court, Los Angeles County.

Frenched Pork Loin Ready for Company



Frenched pork loin, served with spiced red cherries, the choice for the special company dinner.

"The old saw, 'There is nothing new under the sun,' does not hold true when clever housewives are given a chance," says Inez S. Willson, home economist. We have had frenched lamb chops for a long time, but a pork loin roast, frenched and served as shown here, is an innovation with roasts, and one with a real future.

Frenching means removing the meat from the ends of the rib bones so that paper frills may be placed over them after the roasting is completed. The chief advantage of this lies in added attractiveness of appearance in giving an old-fashioned meat cut the distinction needed for company meals.

How to Roast A frenched pork loin is cooked in exactly the same way as any other roast. The frenching may

be done at home or in the market, but usually the latter is preferred because with the sharp knives which the retailer has, this takes only a second. To cook the roast place it, rib side down, in an open roasting pan. When placed in this manner it is not necessary to wrap the unprotected rib ends in order to prevent them from charring, for the fat as it melts, runs down, and keeps them moist.

Season the roast with salt and pepper and place in a slow oven. An oven temperature of 300-350° F. has been found best for roasting pork. All pork cuts should be cooked until well done to develop the delicious flavor which everyone likes, so allow about thirty minutes per pound for roasting at the temperature suggested.

No water is added during the

roasting, nor is a roast covered at any time during the cooking. At the low temperature best for roasts, there is no danger of charring nor of the fat becoming too brown.

Accompaniments for Roast Pork Accompaniments with a tart or spicy flavor have always been in favor for serving with roast pork. So instead of the usual apple sauce, spiced cherries have been used in the illustration. Not only do these make a perfect flavor contrast but also add a touch of color which gives importance to the meat platter.

Bran muffins, browned potatoes, and a crisp vegetable salad might complete the main course of this delightful company dinner.

Serving pork loin Carving and serving a roast pork loin may be easy as the cooking, if the chine bone has been loosened at the market. The loin then may be cut easily into slices, with one rib or chop section being served to each person. In buying a pork loin for the special dinner, plan two chops for each person, for the chances are that second helpings will be required.

WORKER BUYS LOT Sale of a lot on Beech street to John Melville, who is employed at the Mayfair Creamery was announced this week by J. C. Smith of the Torrance Investment company. Melville plans to build a home in the near future.

Herald Ads Save You Money

CAN YOU IMAGINE!



CAN YOU IMAGINE the popularity of a Boston newspaper man who suffering from a serious stomach ailment tried BISMA-REX with such good results that he told his fellow workers about it and now has to hide his own supply!

Explanation

Thousands of sufferers like the one described above say there's nothing you can take that brings faster, more complete relief from acid-indigestion than Bisma-Rex. This pleasant-tasting antacid powder starts to work almost instantly. In three minutes you notice a wonderful improvement. Acids neutralized; gas removed. Many forms of indigestion relief stop there; but Bisma-Rex keeps right on working. Holds acidity and gas in check for a prolonged period. Helps repair the harm done by excess acid in the stomach. Enjoy for yourself the fast, prolonged relief that has made Bisma-Rex famous. Only 30c at

BEACON DRUG CO.

The Rexall Store Leslie L. Prince

1519 Cabrillo Ave., Torrance Phone 180

Authorized Ticket Agency for Greyhound and Union Pacific Bus Lines.

Spring Food Sale!

TAKE ADVANTAGE OF A & P'S SPECIAL LOW PRICES ON THESE QUALITY FOODS

ARMOUR'S STAR FIXED FLAVOR SKINNED HAM
WHOLE OR SHANK HALF lb. **29c** "THE HAM WHAT AM"

FANCY GENUINE 1938 SPRING BABY MILK LAMB SHOULDER
lb. **19c**

100% PURE PORK
SAUSAGE
lb. **25c**

FRESH LARGE EASTERN
Oysters doz. **25c**
FRESH
Barracuda lb. **19c**

FRESH SLICED
Sea Bass lb. **19c**
NORTHERN
Halibut lb. **25c**

SNOW-WHITE BULK SHORTENING
lb. **10c**

EASTERN GRAIN-FED
PORK LOIN
23c lb.
SHOULDER, lb. 19c

SLICED BACON

ARMOUR'S STAR
FIXED FLAVOR 1-lb. **17c**

GROUND BEEF

FRESH-LEAN
Boiling Beef, lb. **12c**

ROAST GRAIN-FED "BRANDED" STEER BEEF
7-BONE CENTER CUT CHUCK lb. **17c**

GRAIN-FED "BRANDED" STEER BEEF
ROUND OR SWISS lb. **25c**

BACON
BY THE PIECE lb. **25c**

GLENWOOD TENDER SWEET PEAS 3 No. 2 cans **25c**

IONA CALIFORNIA TOMATOES 2 No. 2 cans **15c**

BLUE SEA FANCY
TUNA
No. 1 can **12c**

DEL MONTE
Chili Sauce 12-oz. jar **15c**
KING KELLY ORANGE
Marmalade 1-lb. jar **14c**
WILLAPPOINT
Oysters 10-oz. can **12c**

WHITE HOUSE
Evap. Milk 3 tall cans **17c**
DEL MONTE LARGE
Prunes 2-lb. pkg. **11c**
DEL MONTE SWEET
Pickle Chips 8-oz. can **9c**

SULTANA BROKEN SLICED PINEAPPLE
No. 2 can **15c**

DEL MONTE SLICED
PEACHES
No. 2 can **10c**

DEL MONTE
Catsup 8-oz. bottle **8c**
DESSERT SEEDLESS
Raisins 4-lb. pkg. **19c**
KAFFEE HAG OR
Sanka Coffee 1-lb. can **34c**

POLK'S FLORIDA SWEET
Grapefruit No. 2 can **10c**
JAKING POWDER
Rumford 12-oz. can **18c**
DEL MONTE
Coffee 1-lb. can **24c**

6 DELICIOUS FLAVORS
JELL-O
3 pkgs. **14c**

DEL MONTE SEEDLESS
RAISINS
15-oz. pkg. **5c**
SEEDLESS

THE WAKE-UP FOOD
Post Toasties 5-oz. pkg. **5c**
THE WAKE-UP FOOD
Post Toasties 3-oz. pkg. **8c**
NATURE'S NATURAL FOOD
Roman Meal 2-lb. pkg. **25c**

ROSE GARDEN
Marshmallows 1-lb. can **10c**
RED-E-PORT
Pop Corn plus large 39c
SNIDER'S
Sauce Cocktail bottle **18c**

FRESH TASTY
FIG BARS
3 lbs. **25c**

20-MULE TEAM
BORAX
2-lb. **22c**
Price 21c, tax .007

WHEAT OR OAT CEREAL
Dina-Mite large jar **20c**
GERBER
Baby Foods 3 4-oz. jars **23c**

FREE-SWEET
Orange Butter 1-lb. jar **13c**
WRIGHT'S
Silver Polish 8-oz. can **23c**
Price 23c, tax .007

B & M "TASTY"
FISH FLAKES
7-oz. can **10c**

LUX TOILET SOAP OR
LIFEBUOY
cake **6c**
Price .038, tax .002

M. J. B. LONG GRAIN
White Rice 1-lb. pkg. **9c**
DOG-FOOD
Marco 3 1-lb. cans **17c**
Price .16c, tax .005
CLEANS DIRTY HANDS!
Boraxo 10-oz. can **13c**
Price .12c, tax .001

CONCENTRATED
Par Soap Jar **26c**
Price 23c, tax .007
D & M "TASTY"
Codfish Cakes small can **10c**
DURABLE KITCHEN
Brooms Price .26c each **27c**
Price .26c, tax .008
CLEANSER
Old Dutch 3 cans **20c**
Price .19c, tax .006

CALIFORNIA PURE
HONEY
5-lb. pail **38c** 2-lb. jar **19c**

DEL MONTE SLICED OR CRUSHED
PINEAPPLE No. 2 can **17c**

MISSION INN
SPINACH 3 No. 2 cans **25c**

"AMERICA'S FAVORITE COFFEE"
EIGHT O'CLOCK
3-lb. bag **42c** 1-lb. bag **15c**

FRESH FRUITS & VEGETABLES
SWEET NAVAL
ORANGES doz. **10c**
NEWTON PIPPIN
APPLES 10 lbs. **25c**

A Sego Gift Special
4 COLORED POTTERY TUMBLERS
LARGE CANS **3 FOR 19c**

ARIZONA SWEET
GRAPEFRUIT 2 for **5c**
FRESH GREEN
ASPARAGUS 2 lbs. **23c**

Meat and Vegetable Prices Are Effective Through Sat., April 2.

Grocery Prices Are Effective Through Wednesday, April 6th.

A & P FOOD STORES

WE RESERVE THE RIGHT TO LIMIT QUANTITIES

1319 SARTORAVE, TORRANCE

Gift Specials FOR SEGO MILK LABELS



SAVE
SEGO MILK LABELS
FOR THESE BEAUTIFUL AND PRACTICAL GIFTS
(Small labels—Half value)

These special premium gifts are typical of the hundreds of other valuable premiums regularly offered for your selection in the big Sego Gift Catalog. Get your free copy at your local redemption store.



EXCHANGE YOUR LABELS AT ANY OF THESE STORES—write down the name of the store nearest you.

TRECHTER'S COMPTON MUSIC 133 E. Compton Blvd. Compton, Calif.
BOYD'S RADIO SHOP 850 W. 165th St. Gardena, Calif.
TORRANCE ELECTRIC SHOP 1121 Marcelina Ave. Torrance, Calif.