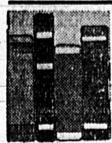


Legion and Auxiliary to Celebrate 19th Birthday Here Saturday Evening



Ask for
these at
the Library

FIFTEEN THIRTY by Helen Wills.

The story of a tennis player, this lively, entertaining and eventful story of Helen Wills' experiences from "pigtails days" to her great triumph at Wimbledon. It is profusely illustrated with photographs of famous players and matches.

WITCH IN THE WILDERNESS by Desmond Holdridge.

This is the book Holdridge escaped to write, a novel of the Amazon, of civilized folk at grips with savage nature. "A genuine adventure story, a tale of tropic perils and exploits written by a man whose own adventuring has given him a knowledge of the South American jungle."

Through a mad whim of its wealthy owner, the diesel yacht, Witch, is taken far up a tributary of the Amazon and there at the beginning of the dry season is caught by the falling waters and imprisoned in the mud. Escape proves impossible and so for six months the highly civilized people aboard become dwellers in tropical wilderness. Swiftly the story becomes one of clashing personalities and peculiar problems, and a dramatic struggle for power, which is the struggle for the ship.

HORSE AND BUGGY AGE IN NEW ENGLAND by Edward Valentine Mitchell.

The author recalls the simple pleasures of the old days of horse and buggy; of the old livery stable, of old sleighs, trotting races and "carriage trade." A truly Yankee book it is full of information and receives a vanished era.

HOUSE IN ANTIGUA by Louis Adamie.

Antigua, once capital of Guatemala and one of the great capitals of the New World, was one of the most ancient of cities. Destroyed by a terrible earthquake in 1773, it was practically abandoned and since has attracted visitors only as a romantic ruin. Some years ago an American botanist, Wilson Popenoe, bought the remains of what had evidently been one of the larger and more important houses in Antigua. With the help of his wife, Dorothy Popenoe, who had delved into archaeology, he succeeded in restoring this house, more or less, to its original condition. By patient research they were able to construct much of its past history from the time it was built, about 1634.

The author was invited to spend some time at the Popenoe house and became vastly interested in its history which to a large extent is the history of Antigua itself. Mrs. Popenoe had died before his visit but from her diaries and conversation with her husband he not only is able to interest us in the house but in the warm and vital quality of Mr. and Mrs. Popenoe themselves.

CALL 444 FOR AD SERVICE

Well, Folks...

Just a little Love Letter to my Patrons and Friends...

What Helps Business? What Hurts Business? What Hurts You? And when your Neighbor goes broke or goes wrong it hurts our Community.

When a House is painted with poor paint it looks bad for the whole block. When you paint your House with SHERWIN-WILLIAMS Paint your neighbors know that you have made a real improvement and added value to the adjoining property.

I have seen many strangers in my store of late and they seem to know that as a place to live Torrance is high and dry.

Everything for the Kitchen and Garden. IF WORRELL HASN'T GOT IT... IT CAN'T BE HAD IN TORRANCE!

WORRELL
The Hardware Man
1517 CABRILLO AVE.
Phone 167-M

Dance and Social at Hall Open to Members' Families

One of the outstanding Legion and Auxiliary affairs of the year—the 19th birthday celebration Saturday night of the ex-service men's organization—is expected to attract a capacity crowd at the Legion hall on Carson street. The social gathering will begin at 8 o'clock. Dancing to Graff's orchestra will begin at 9 and continue to midnight. During the latter part of the evening a buffet lunch will be served.

Guests will be all members of the Legion—post and Auxiliary, their wives and husbands. Several out-of-town Legionnaires and Auxiliary members are expected to join the local group at the celebration. Jim Wilkes is general chairman and the party committee is composed of Charles Myers, Jim Burchett, Pat Boyle and D. A. (Spud) Murphy.

Legion Ladies To Meet For Spanish Dinner Tuesday
An enchilada dinner will be served to members of the American Legion Auxiliary in the Legion hall Tuesday evening, March 22, at 6:30 p. m. The dinner will be followed by the regular social hour in charge of Pan Wilkes.

Those wishing to attend the dinner are asked to make reservations not later than Monday, March 21, by phoning 518. The dinner will be served for 30 cents per plate and proceeds will help defray expense of this unit for the district welfare party.

The annual 19th District child welfare party will be held in the Torrance Civic Auditorium Wednesday, April 13, at 1:30 p. m. Twenty-three units of the District will combine their efforts in making this party an outstanding event both socially and financially. Refreshments, entertainment and prizes. Secure tickets from Mrs. J. R. Wilkes, child welfare chairman for Bert S. Crossland Unit.

MRS. ISEN HOSTESS TO BRIDGE CLUB
The Albert Isen home, 1504 Engracia avenue, furnished the setting for a delightful party Tuesday, when Mrs. Isen entertained for members of her bridge club.

Prizes for high scores were awarded Mrs. Ellis Owens and Mrs. R. J. Rogers. Prize for low score was awarded Mrs. Tom Hyde. Others present were Mrs. A. E. Fletcher, Mac Smith, Tom Shriver and John Disario.

ADDITIONAL SOCIETY
(Continued on Page 6-B)



Paris
Styles

by...
MARY FENTRESS

PARIS (UP)—Lots of blanket-striped, lightweight woollens; many kinds of stripe and color combinations, and individual dressmaker details, give outstanding interest and originality to Paquin's new sport ensembles; at a season when all sport clothes seem to be distinguished by these qualities.

Jackets, which are usually high length, are wide in the shoulders and trim in the waist, and there are few that do not have both breast and hip patch pockets. There is a lot of seam-work on these suits, that gives the effect of masculine tailoring without detracting from their feminine lines.

A favorite trick is to continue the seaming which edges the jacket-revers in a curved line to the side of the jacket. Skirts are often sewn with an overlapping seam down the front and back, or the front alone.

One suit, in hazy blue and pink stripes, is cut so that the stripes run diagonally and meet in a center seam in both the jacket and the skirt. The skirt hem curls up in two scallops in front, and is slashed.

Another ensemble in navy blue and red has a surprisingly high-waisted blue skirt, well above the natural waistline, like a jumper. The sleeves, of the same material, are long and loose, but the rest of the bodice is red chiffon. The effect is that of a red corselet over a blue dress. A simple box-jacket of blue completes the outfit.

This element of simplicity and surprise combines continues in a blue redingote, cut to look like a bolero jacket and pleated skirt. It opens to reveal a white pique blouse with little tabs which button it to the close-fitting blue skirt.

A little cape which buttons to the skirt in front, covers a one-piece dress in a kind of salt-and-pepper tweedy weave. The black and white are picked out by a white vestee, a row of black buttons down the front, and narrow black piping on the rim of the full skirt.

TODAY'S FASHION TIP
Sports ensembles are a riot of stripes with masculine tailoring.

Classified Service, Phone 444

High School P. T. A. Enjoy Youth Program and Elect Delegates

"Peaceful Living for Youth" program presented at Torrance High School Parent Teachers Association meeting held in the school music room Tuesday.

Spanish dances were given by boys and girls of the high school Mexican Club after which Elizabeth Parks, program chairman presented Rev. E. W. Matz, Judge Robert Lessing and Frank Barrow in a symposium. Rev. Matz pointed out the part the church offers to youth and its aims to present problems in an interesting manner. Judge Lessing briefly stated the splendid plan city officials have worked out to assist youth in filling in leisure time. Mr. Barrow, a member of the school faculty told of the various organizations within the school, stressed the part the Co-ordinating Council plays in youth betterment and challenged those present to find a city more willing to cooperate in youth problems.

At the meeting preceding the program members of the nominating committee were elected as follows: T. H. Elson, Mmes. M. J. Edwards, J. W. Post, E. A. Miles and J. E. Hitchcock. This committee will report at the next meeting of the association, which will be held in the school music room Friday, April 8, at which time officers will be elected.

Delegates to Gateway Council elected were Mmes. M. J. Edwards, Charles Prowten, R. J. Rogers and Jack Keefe. Members of the high school organization automatically entitled to a council vote are Mmes. R. S. Sleeth, J. E. Hitchcock, J. O. Bishop and Charles Woodcock. Delegates elected to Tenth District convention to be held at Francis Polytechnic high school, 400 West Washington, Los Angeles, April 7, were Mmes. Woodcock, Prowten, Rogers and Keefe. Mrs. Sleeth is automatically a delegate.

Plans for the play to be in the Elementary school auditorium April 1 were completed. The play "Hollywood Review" presented by students of the high school will be a P.T.A. benefit. Tickets will be placed on sale March 21.

TEST SPEAKERS
Try-outs were held last Thursday at Narbonne high school for speakers for the senior graduation in June.

N. B. P. W. CLUB FETED AT HAWTHORNE

Members of the Torrance club National Business and Professional Women were royally entertained at a dinner party arranged by the ladies of Hawthorne club National Business and Professional Women and held in the Hawthorne Woman's clubhouse Tuesday evening.

Tables were attractively decorated in green and white with pipes and shamrocks as favors placed for 40 including 18 local ladies. Entertainment after the dinner was furnished by Mr. Wilson, a teacher in the Los Angeles City school, and his dummy, Jack Wilson, a ventriloquist in the days of vaudeville explained the art and familiarized all present with the makeup of Jack, who is quite a character, having been the first dummy ever to enter motion pictures.

Norma Fritchie, director of music for the Los Angeles District accompanied by Leona Stenner and her accordion sang several Irish songs, the assembly joining in the choruses.

ATTEND FAMILY PARTY IN SAN FERNANDO

Mrs. Edna Stone, and son Joe, 1508 1/2 Post avenue, her mother Mrs. Ida Flint, and aunt Miss Laura Couch of Los Angeles, attended a family party in Glendale Sunday.

The affair given at the E. E. Clifton home in San Fernando honored Dr. and Mrs. R. M. Anderson of London, Canada, and their daughter Mrs. J. Phillips of South Bend, Indiana.

Others in the party were Mr. and Mrs. E. C. Clifton of San Fernando and Mr. and Mrs. Melvin Hooper of Redlands, with whom the honorees have been visiting for the past two months.

MRS. PATTERSON WEDNESDAY HOSTESS

Twelve members of Long Beach Alpha Omicron Phi were entertained at their regular monthly meeting by Mrs. Jean Patterson, 1318 Acacia avenue, in her home Wednesday evening.

IT IS DANGEROUS

It is dangerous to sell a SUBSTITUTE for 66¢ just to make three or four cents more. Customers are your best assets; lose them and you lose your business. 66¢ is worth three or four times as much as a SUBSTITUTE. Adv.

DO YOU WANT A DIVORCE?

• One of the most direct routes to the divorce court is via the laundry tub, that backbreaking, medieval happiness destroyer that ruins women's tempers, reddens their hands and makes them old years before their time.

ELIMINATE ALL POSSIBILITY OF DIVORCE BY BRINGING THE WEEKLY WASH TO THE TORRANCE LAUNDRY. IT COSTS SO LITTLE AND MIGHT SAVE THE HAPPINESS OF YOUR HOME.

20% OFF Cash & Carry

LAUNDRY
TORRANCE COMPANY
CARSON at BORDER Dry Cleaning PHONE 141

PENNEY'S FORWARD MARCH OF VALUES Anniversary

BARGAIN! SCOP! METAL SUIT CASE
Sturdy and Handy.
21" Long.
\$1.00

WORK SHOES
Double Leather Soles! Well Constructed for the Extra Wear that Men Demand!
\$2.44

MEN'S DRESS TROUSERS
NEW SPRING PATTERNS.
All Wool, Slack Models.
Pair.....**\$4.98**

DRESS SHIRTS
TOWNCRAFT, New Spring Patterns.....**\$1.49**

MEN'S DRESS SHOES
BLACK LEATHER OXFORDS
Composition Soles, Rubber Heels.....**\$2.49**

Work Shirts
Oxhide
49¢

PAY DAY Shirts
Full Cut Blue or Grey
59¢

Work Socks
10¢

BIG PAY Work Socks
BARGAIN 2 Pairs
25¢

Strong! Men's Ox Hide OVERALLS
Full Cut for Comfort!
59¢

High quality at a rock-bottom price! Rugged 2:20 wt. denim, triple sewn seams!

FACIAL TISSUES
at a Saving! 1000 Sheets to the box
Lydia Grey
Tissues, Smooth Soft, and Strong...
35¢

DON'T MISS BARGAIN! Anklets
Elastic Tops!
2 PAIRS 15¢

BOY'S DRESS OXFORDS
ALL LEATHER, Composition Soles.....**\$2.29**

FLOUR SACKS
READY HEMMED, Extra Large Sizes 34x33. White, Blue, Red, Orange and Yellow.....**8¢**

BRAND NEW SPRING CURTAINS
Favorite Colors! Kitchen.....**39¢**

BEDROOM FLOUNCES
48"x78" Rose, Ivory, Yellow, Blue and Green.....**59¢**

Smart Studio Net PANELS
Hemmed, Headed and Ready to Hang; Rough Weave Nets.....**29¢**

Window SHADES
Shades Without Rollers. 36"x6"
10¢

SHADES
With Rollers, FABRAY PIQUE, Washable.....**45¢**

HOSIERY
CHIFFON HOSE. Newest Spring Colors. Ringless.....**59¢**

CHIFFON HOSE
Smart Looking PURE SILK.....**49¢**

PENNEY'S
J. C. PENNEY COMPANY, Incorporated
1269 SARTORI AVE., TORRANCE

HURRY!

25% TRADE-IN ALLOWANCE

On Your Old Electric Refrigerator

On a New **ELECTROLUX**

IF PURCHASED DURING MARCH OR APRIL!

AS LITTLE AS \$5 DOWN!

PUTS A NEW ELECTROLUX IN YOUR HOME!

SERVEL ELECTROLUX THE Gas REFRIGERATOR

Save with the refrigerator you hear about but never hear

- Continued low running cost
- Lasting efficiency
- More years of satisfaction
- Savings that pay for it

Torrance Plumbing Co.
F. L. PARKS, Proprietor Opposite Post Office
1418 Marcelina Avenue Phone 60

Electric Cooking is FAST

PUT IT TO ANY COOKING TEST

Quick performance! That's what you can expect from the modern electric range. It flashes into action with lightning speed, putting every atom of heat where it belongs—into actual cooking work. The new electric ranges give you all the speed you want for every cooking operation. And this speed is coupled with efficiency—and durability. Until you have seen the new electric ranges and examined their many features, you can have no conception of how quick and satisfactory they are. Stop in and see the 1938 models soon, at your dealer's.

SOUTHERN CALIFORNIA EDISON COMPANY LTD.