

Cyclist for 50 Years
Covers 60,000 Miles

BUCKRUS, O. (U.P.)—J. E. Swank bought his first bicycle 50 years ago, has ridden nearly 80,000 miles since that time, and still rides approximately 1,400 miles a year. He uses it to do business and family errands.

Gov't. Tested Kentucky
BLUE GRASS

Special Thurs., Fri.
and Sat. **19c**
Pound.....

PAXMAN'S
Sporting Goods
Headquarters

CAN YOU IMAGINE!



CAN YOU IMAGINE—

The new lease on life taken by this man from Long Island, New York who suffered for 25 years with stomach trouble. He started taking BISMARX and now after only two months finds his stomach behaving normally.

EXPLANATION

Thousands of sufferers like the one described above say there's nothing you can take that brings faster, more complete relief from acid-indigestion than Bismarx. This pleasant-tasting antacid powder starts to work almost instantly. In three minutes you notice a wonderful improvement. Acids neutralized; gas removed. Many forms of indigestion relief stop there; but Bismarx keeps right on working. Holds acidity and gas in check for a prolonged period. Helps repair the harm done by excess acid in the stomach. Enjoy for yourself the fast, prolonged relief that has made Bismarx famous. Only 50c at

BEACON DRUG CO.
The Rexall Store
Leslie L. Prince

1519 Cabrillo Ave., Torrance
Phone 180

Authorized Ticket Agency for
Greyhound and Union Pacific
Bus Lines.

The Herald's Sport Page

Zamperini Runs in L. B. Relays Saturday

NEARLY 1,000 TO COMPETE IN FIRST TRACK EVENT

The nation's track and field brethren will turn toward this Pacific Coast Long Beach Saturday for the tenth running of the Long Beach Relays—the first major outdoor trackfest in the United States—where Dean Cromwell unveils his four-time N.C.A.A. champion U. S. C. squad in competition with all of the leading colleges in the State, Stanford, U. C. L. A., University of California, Fresno State, and the San Francisco Olympic Club.

Fifty Trojans, including Louie Zamperini, will compete in the meet. The Torrance Olympic Games entrant, who finished seventh in the 5,000-meter event at the 1936 world games in Berlin, will run in the W. R. Martin mile against his arch-rival, Norman Bright, and Jerry Lopes of Sacramento J. C., who ran 4:20.6 in San Jose last year, and two from University of California, Charles Mehler and Stan Sadaj.

Rivaling the short-panted lads from Troy will be a 17-man squad from Berkeley, led by a great sprinter, George Anderson, tabbed as even better than when he won the 1936 National, title, 15 from Stanford, and 15 from the Olympic club, including such well-known excollegiate greats as Jack Weiershauser, Norman Bright, Tom Moore, ex-California hurdler; Mushy Pollock, Ray Dean and Vincent Reel, sprints; Gordon Dunn, discus; John Mottman and Bill Reitz, javelin; Humbert Smith, a 4 ft. 7 in. high jumper.

Indications point toward one of the greatest early-season meets in Pacific Coast history. The entry list today had swelled dangerously near the 1,000 mark, with virtually every college, university, junior college and high school in the State represented.

Stephens Field, scene of the meet, is one of the fastest tracks in the State. For the past two years the Southern California C. I. F. meet and last year the state prep finals were staged in Long Beach. Officials are making accommodations to seat a crowd of 10,000. Admission prices are 25c for students; 35c general admission, 50c and 75c for reserved seats.

"Prune Bowl" Introduced
SAN JOSE, Cal. (U.P.)—The Chamber of Commerce has adopted "The Prune Bowl of the World" as a designation of the region.

Gauchos Lose to Pirate Nine

By scoring five runs in the fourth inning and adding another in the sixth, San Pedro high school's hardball team turned back the Narbonne Gauchos in the opening game of the Marine league schedule, 6 to 5, at Long Beach, Friday.

Torrance high has dropped out of the Marine baseball running this spring to play softball as a free-lance outfit.

The Gauchos scored in the first inning when a wild throw to second went into center field and led until the five-run rally the Pirates staged in the fourth. Pollea and Kincannon formed the Narbonne battery with Piercey, Johnson and Evans making up the Pirate crew.

BASKETBALL In Merchants' League

GAMES TONIGHT:
Nat'l Supply vs. A. & P.
Merrills at Gardena

GAMES NEXT TUESDAY:
Assignments not complete, but there will be two games at high school gym, starting at 7:15 p. m.

RESULTS TUESDAY NIGHT:
Paxmans 50; Nat'l Home 32
Gardena 38; A. & P. 29

RESULTS LAST THURSDAY:
Nat'l Supply 38; Gardena 32
Paxmans 45; Merrills 38
Nat'l Home 37; A. & P. 36

HOW THEY STAND:

Team	Won	Lost
Paxmans	5	0
Gardena	3	1
Nat'l Supply	3	2
Merrills	2	2
Nat'l Home	2	3
A. & P.	0	5

by this minor surgical attention. Zamperini is holding a B average in his studies, which shows that he is not only giving close attention to his athletic career but also is quite familiar with his books.

IT IS DANGEROUS
It is dangerous to sell a SUBSTITUTE for 666 just to make three or four cents more. Customers are your best assets; lose them and you lose your business. 666 is worth three or four times as much as a SUBSTITUTE.

Bowling Teams Near End of Tourney

Tournament play which has been taping up all of the Torrance Bowling Academy's facilities for the past several months is drawing to a close among the various leagues and there are more "open alleys" becoming available to unattached bowlers nightly, according to Ed Gaspar, manager.

Following are the standings of the various leagues to date:

875 MAJOR

Team	Won	Lost
Tor. Academy	55	29
Alaska Inn	52	32
Ed Schwartz	47	37
Eastside	44	40
Tor. Electric	41	43
C. of C.	40	44
Howard's Jewelers	30	54
Dave's Mkt.	27	57

COMMERCIAL

Team	Won	Lost
Sequoia	63	29
Supreme Egg	54	38
Nat'l Supply	52	40
Log Cabin	50	42
Union Ice	45	47
Ritz Cafe	43	49
Marine Terminal	37	55
Haymakers	24	68

MAJORS

Team	Won	Lost
Hopping Hornets	47	13
Sandy Mosk	35	25
Mineralites	35	25
Harold Lloyds	27	33
Bates Grip	27	33
Nelson Co.	26	34
Manhattan Beach	25	35
Young's Mkt.	18	42

MERCHANTS

Team	Won	Lost
Tor. Billiards	49	31
Civic Center	46	34
Gen'l Chemical	45	35
Colburn's Mkt.	35	45
J. C. Penney Co.	34	46
Tor. Plumbing	32	48

The Torrance Herald carries all the news. Don't be an "outsider"—Subscribe today!

PISTOL SCORES TO DATE ISSUED

Pistol scores for the first two months of 1938 were compiled this week for members of the Torrance Pistol club by Sergeant Ernest Ashton. The report follows:

Name	St.	Av.
Bennett	21	274.25
Medicus	47	271.23
De Bra	19	271.15
Eckersley	26	269.44
Stanger	16	268.80
Grant	1	268.00
Dr. Beeman	12	266.12
Moore	21	260.50
Ashton	27	260.24
Maddux	19	260.00
Green	19	258.75
Groen	19	258.28
Felker	24	256.90
Travitt	14	256.14
Boynston	17	256.00
Spoehger	18	251.40
Van Gorder	53	251.34
Dolton	3	249.75
Schuerman	61	247.23
Houdashelt	42	242.30
Brown	21	242.30
Morgan, J.	9	239.66
Stroh	14	230.63
Lauphear	27	230.30
Ecklund	3	224.16
Smith, Sid	5	218.80
Peterson	6	219.75
Mrs. Moore	6	218.16
Thompson	4	217.75
Haslam	3	214.25
Sykes	8	213.40
Laux	19	212.80
Colburn	7	204.00
Tidwell	4	200.00
Perkin	3	190.00
Perry	1	148.00

Whaling Catch Smaller For Canadian Fleet

OTTAWA (U.P.)—The British Columbia whaling fleet, only one of its kind in the Dominion, killed 317 whales in 1937, compared to a 1936 kill of 373.

The 1937 slaughter included one sulphur, seven humpbacks, 44 finbacks and 265 sperms. largest individual capture was a 76-foot female sulphur whale.

Rains Give Local Ball Clubs Jitters; Hope for Relief

Rained out for the past three Sundays, this city's two baseball teams—the Torrance Merchants and the Torrance-Lomita Merchants—addressed a fervent prayer to Jupiter Phivus this week, entreating that legendary god of inclement weather to "hold up his rain bucket."

Managers Joe Sandland of the Torrance Merchants and Walt Morris of the T-L Merchants are beginning to fear that their squads will "go stale" if the Sabbath downpours continue.

San Pedro Coppers Beat Local Squad

A five-man team from the Torrance Pistol club lost a match with a San Pedro police department squad last Thursday on the Pedro range, 1335 to 1,266. William H. Stanger was high man (265) for the local team but the best shooting of the day was done by Officer Haley of San Pedro who scored 280.

Other members of the Torrance team and their scores were: Medicus, 264; Bennett, 251; DeBra, 244; and March, 238.

CALL 444 FOR AD SERVICE

Roof Leaking?

See
Scotty

2415 SONOMA ST. TORRANCE
Phone 355-W

For 1938

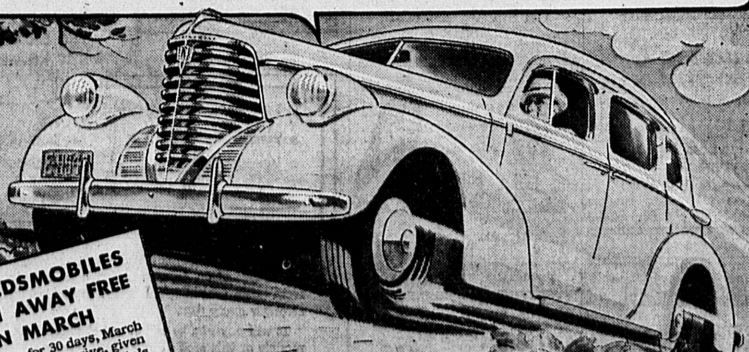


Santa Fe

presents
**AMERICA'S LARGEST FLEET
OF ULTRA-MODERN
STREAMLINED TRAINS**

Drive an Oldsmobile! LET THE CAR
SPEAK FOR ITSELF!

"YOU THRILL TO LIVE, EAGER POWER-RELAX IN
RESTFUL COMFORT-RELY ON THE LATEST SAFETY
FEATURES. FROM KNEE-ACTION WHEELS TO
BIG, ROOMY FISHER BODY, HERE ARE ALL THE
ESSENTIALS FOR REAL MOTORING ENJOYMENT!"



**30 OLDSMOBILES
GIVEN AWAY FREE
IN MARCH**

A car a day for 30 days, March 1 to March 30, inclusive, given away free in Oldsmobile's nationwide contest. You may be the winner of a big 1938 Oldsmobile Six Two-Door Sedan. Get full details from your Oldsmobile Dealer! Enter Oldsmobile's Great Nationwide Prize Contest.

A GENERAL MOTORS VALUE

OLDSMOBILE
EASIEST HANDLING CAR ON THE ROAD

MULLIN'S SERVICE

2053 TORRANCE BLVD.
Phone Torrance 320-J

2 El Capitans

Now for El Capitán! Absolutely unique in the economy travel field—is this gleaming new Santa Fe twice-a-week silver dash to and from California, streamlined in stainless steel behind its Diesel-electric locomotives!

Here is the only transcontinental train in America entirely for chair-car passengers. Believe it or not, it will be as fast as the Super Chief—only 39 1/2 hours between Los Angeles and Chicago! It will combine low fares and low-cost meals with trim beauty and the latest comforts—including deeply-cushioned reclining chairs, carpeted aisles, broad windows, fine lighting, and attractive dressing rooms. It will save you days and dollars.

El Capitán will leave Los Angeles Tuesdays and Fridays at 1:30 pm—ahead of the Super Chief. All seats are numbered and reserved. TUESDAY, FEBRUARY 22, IS THE FIRST REGULAR DEPARTURE FROM LOS ANGELES. Want to make that memorable FIRST TRIP with us?

If you're economy minded, choose between this new El Capitán, or the already-famous daily Scout—there IS service!

2 Super Chiefs

Another superb streamlined Super Chief enters regular service FEBRUARY 22nd—thus doubling the tremendously popular service on this extra-late and ONLY SOLID-PULLMAN 39 1/2-hour train between California and Chicago. Twice-weekly departures from Los Angeles will be Tuesday and Friday evenings at 8:00 pm; from Chicago Tuesday and Saturday evenings at 7:15 pm.

6 New Chiefs

It was only fitting that the famous solid-Pullman extra-late Chief also should go streamlined in this great Santa Fe year. Hence our pleasure in announcing delivery of new equipment, beautiful and modern as that on the Super Chief, sufficient to streamline, in stainless steel, all six of the trains required for this finest and many-honored-of all California-Chicago DAILY service!

For details and reservations
Ask A. T. SAVAGE, Agent
Santa Fe Station.
Phone 214 - Torrance

1 San Diegan

Now back to California, where, ON OR ABOUT MARCH 15th, the shimmering new six-car, stainless steel SAN DIEGAN is to link Los Angeles and San Diego more closely.

The San Diegan will make two round trips daily, on a 24-hour schedule, between these great Santa Fe terminal cities. Beautiful and ultra-modern, with fine Fred Harvey meals in its cheery lunch-lavarn car, the San Diegan will bring new pleasure and speed to inter-city travel, and afford splendid connections with Santa Fe transcontinental trains in and out of Los Angeles.

Finer, Fuller Service for These Long-Established Favorites, Too

Streamlining of the extra-late Chief enables us to give all the best of the Chief's fine conventional standard equipment to the no-extra-late solid-Pullman CALIFORNIA LIMITED, beloved of countless conservative Santa Fe patrons for 45 years.

THE DAILY SCOUT, tremendously popular California economy train, now has beautiful new stainless steel chair cars, and finely remodeled standard Pullmans for Tourist-sleeper travelers.

And to all Scout patrons we promise ever comfort and service we can put into this fine dollar-saving type of travel.

THIS IS IMPORTANT, TOO. Part of this great program has involved improvement of roadbed, laying of heavier steel, cutting of grades and straightening of curves. You who ride with us will enjoy the smooth, quiet sweep of your train. Last, but not least, a NEW SANTA FE TIMETABLE, EFFECTIVE FEBRUARY 20, 1938, provides an exceptionally complete and convenient web of connecting service to and from all parts of the country.

1 Chicagoan 1 Kansas Cityan

Still they come! ON OR ABOUT APRIL 15th, Chicago and Kansas City will have their own gay, swift Santa Fe streamliners. There'll be two of them—of seven stainless steel cars each, Diesel-electric drawn, and on 74-hour schedules.

On these trains, beauty and roomy comfort will feature the chair cars, with their rotating reclining seats; the combination lounges, parlor observation cars and Fred Harvey diners.

The westbound streamliner, named the Kansas Cityan, will leave Chicago 9:00 am, arrive 4:30 pm. The eastbound train, the Chicagoan, will leave Kansas City 2:10 pm, arrive 9:35 pm. Finer, faster Chicago-Kansas City service—more convenient connections at either end!

It is our high aim, in this Santa Fe year, to render service that will bring us new friends, and bind our old friends more closely to us

For details and reservations
Ask A. T. SAVAGE, Agent
Santa Fe Station.
Phone 214 - Torrance

for **Chicago and the East**

1938 is a Santa Fe Year