

Neff In Larger Quarters for Box-Building

Having obtained a lease on the large industrial building on El Prado below 213th street, William Neff of the Torrance Oil Field Supply company, is now planning to install some additional machinery for manufacturing boxes for a Los Angeles bottling company.

The larger quarters, which originally housed a shoe factory and later a manufacturing plant for airplane parts, served as a warehouse for the Star Department store and, until recently, was occupied by the "Stroh-Mosk" firm, will provide greater space for storage of pre-cut lumber at the company's new plant. Neff has a contract to supply more than 100,000 of the bottle-containers for the Los Angeles firm.

Read The Herald Weekly

ASSOCIATED GROCERS

SPECIALS!
For Friday and Saturday,
February 11, 12

LUX Flakes sm. 10c
Large 22c

LUX Toilet Soap
2 bars 13c

CHALLENGE COTTAGE CHEESE
2 lbs. 15c

RINSO sm. 9c lg. 21c

Lifebuoy Soap 6 1/2c

SPRY Shortening
1-lb. can 20c
3 lb. can 56c

FOLGER'S COFFEE
1-lb. 27 1/2c
2 lbs. 53c

B&M Kidney Beans
No. 2 can 10c

B&M Baked Beans
Large can 14c

N.B.C. SNOWFLAKE
Crackers lb. pkg. 16c

FRANCO AMERICAN SPAGHETTI
No. 1 Can
3 for 25c

GOLDEN SWAN
Milk 3 tall cans 19c

Gold Medal (1-lb. Cello Pkg.)
Macaroni or Spaghetti 2 for 27c

Borax Powder
10 oz. 10c; 2 lbs. 25c

DURKEE'S OLEO-margarine
2 lbs. 29c

Boraxo can 15c

BORAX Soap Chips lg. 22c

DEL. MAIZ Cream Style
Corn 17 oz. can 11c

DEL. MAIZ 12 oz. can
Niblets 2 for 25c

BLACK SWAN FLOUR
5 lb. 21c
10 lb. 38c
24 1/2 78c

Your Associated Grocers

DOAN'S MARKET
2223 Torrance Blvd.
Phone 486

RICHARD COLBURN
1801 Cabrillo Phone 110

GEO. H. COLBURN
645 Sartori Phone 622

Tours America



Mrs. Betsey Kelsberg, Norway's world-famous social worker, pauses in San Francisco on her current tour of the Western states. She is studying American labor conditions and advocates a Government mediation board to force warring labor factions to unite.

Girl Accuses San Pedran

Said by police to have been identified by a local 12-year-old school girl as the man who allegedly molested her late last week, Carl Morabito, 28, manager of a ship service in San Pedro, was arrested in that city by local officers last Saturday morning. After arraignment during which he pled not guilty to the charge and demanded a court trial, Morabito was released on \$500 bail pending his hearing March 4.

According to local police, Morabito was arrested on a similar charge recently in San Pedro and was acquitted after establishing an alibi which accounted for his movements throughout the day that the alleged crime occurred. Three small girls had identified him in that case as the man they saw commit an indecent act but a written report certifying as to his presence elsewhere was upheld by a San Pedro court hearing the case.

Morabito has vigorously denied the local girl's charge and is preparing to fight to ease with the assistance of an attorney. He insists that he was in San Pedro from 2 to 5 o'clock on the afternoon when the Torrance girl says she was molested.

Two Small Fires Summon Firemen

Two minor fires last Thursday and Sunday nights sent the fire department on runs and resulted in small damage. The first blaze was at 2112 238th street where Sergeant W. A. Covington's car was smoking from a fire in the back seat. This was extinguished before the blaze spread. Serg. Covington resides in Riverside and is believed to be connected to a March Field air squadron.

Sunday night a lean-to covering a hot-water heater at Glen Armstrong's home, 2378 239th street, caught fire but the blaze was out by the time the department arrived. The lean-to was attached to the house and its damage amounted to about \$50, firemen reported.

INTEND TO WED

Matthew E. Doner, 24, of Harbor City, and Bessie L. Grafe, 19, of 2129 256th street, Long Beach.
Joseph Cullen Box, 29, of 1734 Arlington, and Velma Orthella Groff, 23, of Walnut Park.
Chester Lewis Berg, 20, of Redondo Beach, and Henrietta Schipper, 18, of 1808 Sepulveda.



Correct time is IMPORTANT!
Have your watch or clock checked now.

BAKER SMITH
WATCH REPAIR
1321 SARTORI AVE.
Phone 87 Torrance

DETOUR

Col'm Under Construction
By BETSY BYRNES

Young Abraham Lincoln, the carpenter's son. Whatever young Abraham did was well done! He worked from the rising till setting of sun. A student more willing to learn there was none. The Bible and Shakespeare and Euclid he read. While others were peacefully sleeping in bed. The nerve of some critics to call him uncouth! How many of them did as much in their youth?

QUESTIONS
Saturday will mark the anniversary of the birth of Abraham Lincoln. Where was he born?
Who was Nancy Hanks?

The following quotation is a very familiar one—"A house divided against itself cannot stand." Who uttered those words on what occasion?

TODAY'S PROVERB
"To one who has a pie in the oven you may give a piece of your cake."

—French.
That old French proverb sounds rather cunning to us! (And we don't mean cute!)

ANSWERS
Abraham Lincoln, our great emancipator president, was born in a log cabin in the backwoods of Kentucky. In his early years he really knew poverty and want.

Nancy Hanks was the mother of Lincoln. She died when Abraham was a small boy. Before long his father married a widow, Sarah Bush Johnson, who proved to be a very loving step-mother to the boy.

"A house divided against itself cannot stand" was a part of Lincoln's speech of acceptance, after he was nominated by the Republican party to run against Douglas for Senator.

ADIOS
Here is one of our favorite Lincoln paragraphs:
"Go slow, my friend. Go easy. Eat three square meals a day. Keep your digestion good. Be courteous to your creditors. Smile and be kind. This may not be all there is in life, but it will help to make your lot a happier one."

—Abraham Lincoln.

Kerr Wants Funds To Finance 1938's Many Elections

An unprecedented volume of work in preparation for the coming elections throughout Los Angeles county makes it mandatory to expend budgeted funds much earlier this year than usual, Registrar of Voters William M. Kerr told the board of supervisors in asking permission to exceed his quarterly restrictions with the expectation of restoring the balance later in the year.

Elections are to be held in 33 sixth class cities this year, and in Alhambra and Long Beach, both charter cities. There also are to be elections in 114 elementary school districts and 26 high school districts throughout the county.

TRAILER RENT
Trailer residents in Los Angeles city limits must pay \$5 fee to remain in the city more than 90 days.

Title 1 of F. H. A. (modernization) has been reinstated

VITALLY IMPORTANT TO EVERY HOME OWNER, PROSPECTIVE HOME BUILDER OR BUYER!

WHY YOU SHOULD BORROW FROM Bank of America

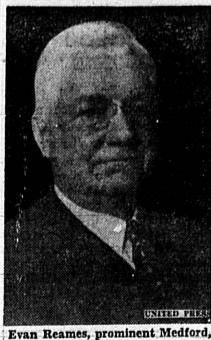
Under the terms of the Federal Housing Act—just amended by Congress.

- 1 You obtain your home loan (to buy, build or modernize) on the most favorable terms.
- 2 You do business with a great statewide financial institution that welcomes both borrowers and depositors—and gives utmost consideration to individual needs.
- 3 You deal directly with the bank at all times—and you obtain prompt, efficient service at your neighborhood branch where the entire loan transaction is completed.
- 4 You may make your loan payments at any branch throughout the state.
- 5 You immediately establish a credit relationship that will aid you in obtaining loans for all other future requirements.



Member Federal Deposit Insurance Corporation

New Senator



Evan Reames, prominent Medford, Ore., Democrat, who has been appointed to the U. S. Senate by Governor Charles H. Martin of Oregon. Reames succeeds Frederick Steiwer, resigned, until an elected senator takes over the post.

Second Zoning Hearing Held

A second hearing on the proposed city-wide zoning ordinance held Tuesday night by the city council drew but one protest. This was from J. C. Smith, realtor, who objected to zoning all property south and west of the municipal park exclusively for residential use. He asserted that lots fronting the park were all right for residences but that the remainder of the area should be opened for oil exploration.

City Engineer Frank R. Leonard also revealed that the zoning measure would prohibit oil derricks on two strips 100 feet wide from the edges of Arlington Avenue. Smith's protest was taken under advisement and it is highly probable that the map will be redrawn to meet his suggestions which the council believed were worthwhile.

Another and possibly final hearing on the zoning measure will be held in the near future when City Attorney C. T. Rippey and City Engineer Leonard submit their final report on the matter.

Six New Patients Enter Hospital Here

Six new patients were received during the past week at Torrance Memorial hospital. They were: Mrs. Grace Bartlett, Long Beach, Tuesday for medical treatment; Mary, 10-year-old daughter of Mr. and Mrs. Phillip Dickenson, Redondo, Monday for medical attention, and Raymond Groover, Harbor City, treatment for a fractured right clavicle suffered last Friday.

Eugene Hart, Manhattan Beach, entered Sunday for medical attention; Mrs. Ruth Hufford, Redondo, Monday, for surgery, and Mrs. Anna Olsen, Wilmington, Feb. 3, for surgery.

MODEL HOME On 1/2 Acre Ready For Occupancy Torrance Heights 2137 So. FIGUEROA Drive East on Carson Turn Left on Figueroa Open For Inspection! Come Out Sunday and See Your Dream Home! For Sale On Easy Terms!

Relief Cost Repayments Cut Down County's Gas Tax Funds

SACRAMENTO, Feb. 10 (U.P.)—Twenty-six California counties have begun amortization of a \$27,000,000 debt incurred during the most trying days of the depression to finance relief costs. The first payment deducted from a total gasoline tax apportionment of \$4,085,245.63, amounted to \$1,526,606.61 and left only \$2,558,639.02 to be distributed among the state's 58 counties.

Los Angeles, Alameda, San Diego, San Francisco counties were hit hardest. Los Angeles' apportionment of \$1,496,461.26 was reduced by \$849,622.87 and left only \$646,838.39 as the final allocation for the period of Oct. 1 to Dec. 31, 1937.

The debtor counties acquired their obligations through borrowing from a state relief bond issue of \$20,000,000. Accrued

interest on the debt is estimated at approximately \$7,000,000. The state attorney general has ruled the money must be repaid during the next 10 years. All the payments will come from similar gas tax reduction, except in the case of San Francisco, which arranged to pay out about half of its obligation from general fund revenues.

Lion Hunting Upsets Home
SAN JOSE, Cal. (U.P.)—Lion hunting and matrimony do not mix, according to Mrs. Katherine Bruce, wife of California's official lion hunter. In her petition for divorce she charged her husband spends so much time hunting lions all over the state that there isn't enough left for her to make marriage worth while.

Provo Plant Wins Diehl Trophy Again

For the second consecutive year the employees of Columbia Steel company blast furnace and coke by-product plant at Provo, Utah, have been awarded the A. N. Diehl bronze safety trophy.

Each year the Diehl safety trophy is given to the plant within the company achieving the lowest percentage of "lost time" accidents. In this case it was announced that the Provo plant gained the trophy with a record of 1.47 accidents per million man hours worked.

COUNTY'S SHARE
Los Angeles county received \$1,563,567.08 as its share of motor vehicle fees collected by the state between Jan. 1 and Dec. 31, 1937, on 1,087,025 vehicles.

KENNEY'S SHOE REBUILDING

SHOES Last Longer
... Have Better Appearance If Half Soled and Re-Heeled at KENNEY'S
1917 CARSON at CARRILLO

one-stop FOOD SHOPPING!
Top Quality MEATS • Fresh VEGETABLES • Fancy GROCERIES
In Your Neighborhood!

Safeway brings low prices right into your neighborhood! At these conveniently located community stores, you are able to fill all your food requirements in a most satisfactory manner.

There's no need to fight traffic, no need to walk or drive long distances to shop at advantage. You'll find the best in meats, groceries, fruits and vegetables, attractively priced at your Safeway. Start "one-stop-shopping" at Safeway today.

DESSERT ITEMS

Stokely's Apricots Whole 2 No. 2 27c
Unpeeled cans
Stokely's Grapefruit Fancy 10c
Segments
Stokely's Nectarines 2 1/2 oz. 25c
Cans
Peaches Stokely's Del Monte or Libby's, Sliced or halves No. 2 1/2 cans 15c
Libby's De Luxe Plums 2 1/2 oz. 25c
Assorted flavors of fresh gelatin dessert
Jell-O 3 boxes 14c
Kre-Mel pudding Chocolate, Caramel, or Vanilla 3 boxes 10c

FRUIT JUICES

Grape Juice Church's Brand 17c quart 32c
Grapefruit Juice Stokely's Brand 20-oz. 10c
C-H-B Tomato Juice Unsweetened 2-oz. 7c

MISCELLANEOUS

Canned Milk Max-I-mum Brand (small cans, 6 for 18c) 3 tall 18c
Jams and Jellies Tropical Brand 12-oz. 15c
Wet or Dry Pack Shrimp 5-oz. 16c
Del Monte Catsup 14-ounce bottle 12c
Tomato Soup Van Camp's 3 1/2-oz. 13c
Val Vita Tomato Sauce 7 1/2-oz. 3c
Hemet Olives Mediums 7c Jumbo size 16c
C-H-B Pickles Sweet, Sweet Mix, or Sweet Relish 12-oz. 17c
Edwards Coffee 2-lb. can 45c Drip or regular 23c

CANNED VEGETABLES

Beans Van Camp's, with pork 31-oz. 11c
16-oz. can 8c; 20-oz. can 10c
Stokely Kidney Beans No. 2 10c
Cut Green Beans Stokely's Brand No. 2 10c
Masterpiece Spinach No. 2 9c
Stokely's Tomatoes Solid Pack 24-oz. 15c
Standard Tomatoes Pure Pack 3 No. 2 25c

RICE—CEREALS—FLOUR

M. J. B. White Rice 1-lb. 10c 2-lb. 18c
All Bran Kellogg's Brand 12c 18-oz. 19c
Post Toasties Double crisp 2 pkgs. 11c
Quaker Oats Quick or regular 9c 48-oz. 18c
Flour GOLD MEDAL No. 10 24c 24-lb. bag 110c
HARVEST No. 5 18c No. 10 33c 24-lb. bag 72c
Flour BLOSSOM bag 24-lb. 15c
Fisher's Cake Flour 40-ounce package 15c
Pancake Flour Harvest Blossom 40-ounce package 15c

SOAPS—CLEANSERS

P & G Soap White Naphtha 3 bars for 10c
(Price ex-tax, .02325; sales tax, .0097)

Lux Toilet Soap 3 bars for 6c
(Price ex-tax, .05825; sales tax, .00175)

Peet's Granulated Soap 20-ounce package 20c
(Price ex-tax, .2472; sales tax, .00728)

Oxydol Soap Granulated for household use 24-oz. box 20c
(Price ex-tax, .1917; sales tax, .00583)

Super Suds Fine for dishes 22-oz. box 17c
(Price ex-tax, .1650; sales tax, .0052)

Holly Cleanser Efficiently cleans 3 cans 9c
(Price ex-tax, .0291; sales tax, .0097)

AIRWAY COFFEE per lb. 15c
The aristocrat of thrifty coffees. Try a pound of Airway today.

PUMPKIN MISSION INN BRAND No. 2 15c
Choice quality golden pumpkin. For excellent pumpkin pies.

CORN STANDARD PACK (PEAS OR BEANS - 3 No. 2 25c) No. 2 15c
Standard pack corn, peas and cut green beans at low prices.

TOP QUALITY MEATS

Safeway continues to offer top quality meats at low prices. Check these values on Western grain-fed meats that bring you finer, flavor-perfect meats of economy price. Save on meats at your neighborhood Safeway.

BEEF ROAST lb. 18c
Fancy center cuts from chuck. (Neck cut roasts, lb. 15c.)

LAMB ROAST lb. 15c

PORK ROAST lb. 18c
Shoulder of fancy Safeway lamb to roast.

ROUND STEAK lb. 27c
Also Swiss or pin bone Sirloin steak cut from Safeway Guaranteed beef.

SIRLOIN STEAK lb. 29c
or center cut round. Best cut steaks from Safeway. Guaranteed beef.

T-BONE STEAK lb. 32c
Also club steak. From Safeway. Guaranteed beef. Fine to fry or broil.

PORTERHOUSE lb. 33c
Fancy Steak from Safeway. Guaranteed beef. Get it thick to broil.

SLICED BACON lb. 35c
Swift's bacon, specially selected for our markets. Fine fried with liver.

BEEF ROAST lb. 21c
Shoulder rib or round bone roasts cut from Safeway. Guaranteed beef.

PRIME RIB ROAST lb. 25c
Also rump roast cut from Safeway. Guaranteed beef. Fine to oven roast.

COLORED FOWL lb. 29c
Fancy fresh dressed fowl to stew or fricassee. Note low price at Safeway.

COLORED FRYERS lb. 33c
Fancy milk-fed, dry-picked chickens to fry. Serve chicken tonight.

PURE LARD lb. 12c
High quality lard. Fine for baking or deep fat frying. Packed in cartons.

ROBIN HOOD OLEOMARGARINE
Fine quality oleomargarine. Tested and approved by Homemakers' Bureau. For cooking or table use.
2 pounds for 25c

BROWN DERRY BEER
Pilsner blend. Declared by experts to equal pre-war Pilsner.
4 11-ounce 25c bottles (Price ex-tax, .0068; sales tax, .00182)
Giant Quart 15c (Price ex-tax, .1463; sales tax, .00437)
Bottles are extra. Beer is offered for sale only in the Safeway stores licensed to sell it.

SU-PURB GRANULATED SOAP
Made with an extra ingredient to protect your hands. 24-oz. 21c box
(Price ex-tax, .0338; sales tax, .0012)

FRUITS and VEGETABLES
Fresh from the gardens and orchards of the West.

POTATOES 10 lbs. 15c
U. S. No. 1 Idaho grown Russets. Note low price.

Rome Beauty Apples 8 lbs. 25c
Extra large size Imperial grown 4 for 10c
Grapefruit Tender, Sweet in full pods 2 lbs. 15c
Fresh Peas Crisp, even-sized Large bunches 3 bunches for 5c
Carrots Red Variety Fine with peas 1b. 5c
New Potatoes

DIAMOND Large Budded 20c

SAFEWAY STORES
Sales Tax Will Be Added To Retail Prices On All Taxable Items