

## KENNEY'S SHOE REBUILDING

KEEP YOUR  
CHILDREN'S FEET  
DRY AND WARM

Rebuild their Leaky  
Shoes with New,  
Waterproof Soles  
1917 CARSON at  
CABRILLO

## THE BEST BABY FEED IS FEDCO

That's why nearly every major mill claims a feed "Just Like Fedco." It's the Original, Complete, One Feed For All Ages. For Chickens, Turkeys and Ducks. Now used by over 8,000 poultrymen. Recommended by largest hatcheries, frier and laying plants. THE NO COCCIDIOSIS FEED when fed to normal chicks under normal conditions. With a record of over 15 years the same formula. Raises more chicks, heavier fliers, more profitable layers. Cuts labor, losses, saves 5c to 7c a hen monthly on feed. Our offer \$500.00 for a Better, Cheaper, Longer Proven, Complete feed. Make a 90 day feed test. Let results guide you. Sold by your dealer.

FEDCO COMPANY  
1840 Valley Blvd., Rosemead

## Auditorium Gains Dishes, Decorations

Two appropriations, both affecting the Civic Auditorium, were made by the city council at an adjourned meeting held last Thursday night. One was for \$275.16 for additional dishes and the other was for \$100 to decorate the building for the dinner-meeting of the Los Angeles County League of Municipalities tonight.

## Let's Talk Turkey!!

Place Your Order Now For  
PRIME CORN-FED

## Turkeys

E. H. BEARDSLEY  
1051 Magnolia — Gardena  
Phone Gardena 7081

## Crash Victim Seeks Damages

Injured in a traffic accident at East Road and Normandie avenue in Torrance last May 13, Mrs. James E. Cramer today sought damages of \$7,500 in a suit on file in Los Angeles county superior court.

Robert Hale and R. A. Hale are named defendants in the complaint, being charged with negligence when their car collided with another in which Mrs. Cramer and her husband were riding.

## Nazarene Children to Give Yule Fete

A Christmas invitation to all residents of Torrance to attend the Nazarene program by young members of the Church of the Nazarenes next Wednesday night, Dec. 22, at 7:30 o'clock, at 1207 El Prado. Boxes of candy will be given all children attending.

## Work Week for Steel Employees Highest Since '30

Asked in New York City what the average hours of work of the United States Steel Corporation had been during the past year, Myron C. Taylor, chairman of the board, replied:

"Reports for the first nine months which are available indicate that the employees of the Corporation worked an average of 39.98 hours per week during that period. This is the highest average for a similar period that has been maintained since 1930. In all the years since that time, including 1937, the average weekly hours in the Corporation have been less than 40, while the number of employees has steadily risen to a peak in the month of August 1937, when 278,178 were engaged. The present policy continues to be that which was adopted in 1930 of spreading the work."

## Local Residents' Mother Passes Away Sunday

A long period of ill-health came to an end Sunday night at Torrance Memorial hospital when Mrs. Amelia Areq, beloved wife of Alex Areq of 709 Diamond street, Redondo Beach, and mother of Gaston Areq and Mrs. Edith Miller of this city, passed away. Mrs. Areq had been received at the hospital December 6 for the second time since last July.

During the 12 years she was a resident of Redondo Beach, Mrs. Areq made many friends there and in Torrance. Her passing was sincerely regretted by all who came in contact with her wholesome personality. Mrs. Areq was born in Brussels, Belgium, in 1884, and came to this country 30 years ago.

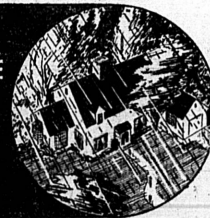
By her expressed wish, her body lay in state at the residence Tuesday and many friends called to pay their respects at that time. Rosary was said Tuesday evening in the Ralph Allen funeral home and the requiem high mass was held yesterday morning at St. James' Catholic church in Redondo Beach. Interment followed at Pacific Crest.

## Lindbergs Honored at S. P. Tuesday

Bert Lindberg of 1318 Portola avenue was the principal speaker at a Christmas festival service held in the Scandinavian Seamen's church at San Pedro Tuesday night. Afterwards a reception was held in the Rold Amundson hall honoring Mrs. Lindberg and Horatio Nelson. Refreshments were served.



WAS YOUR HOME  
Comfortable  
LAST WINTER



HERE'S ECONOMICAL  
SMALL HOMES  
HEATING

Fraser Tuck-A-Way is a small furnace that gets big results. It fits snugly against the wall — out of the way of rugs and furniture and almost out of sight. But from its handsomely finished bronze plated grill comes a flow of clean, warm air that circulates quickly and effectively to every corner of the room. It is easy to install — economical to operate.

Small Down Payment — Easy Monthly Terms

We Give Treasure Hunt Tickets

## Torrance Plumbing Co.

F. L. PARKS, Proprietor Opposite Post Office  
1418 Marcelina Avenue Phone 60

# FRASER TUCK-A-WAY

# OLDSMOBILE

DELIVERS HERE AS LOW AS

# \$1032

NOWHERE ELSE CAN MONEY BUY SO MUCH!

## EXPERT CLEANING and PRESSING 1344 POST AVE. PHONE 370 PIPER'S CLEANERS

## ASSOCIATED GROCERS

INDIVIDUALLY OWNED STORES

## FOODS You Want

AT PRICES YOU LIKE!!!

SPECIALS For Friday and Saturday, December 17, 18

## SELECT YOUR CHRISTMAS TREE

Now From Our Large Group of  
Beautiful, Well-Proportioned Trees

## We Are Now Taking Orders FOR CHRISTMAS POULTRY

## Now Is The Time To Buy Your Christmas CANDY and NUTS

QUICK <b>FUDGE MIX</b> Box.....	Ocean Spray CRANBERRY <b>SAUCE</b> 1-lb. Can 2 for 25¢
<b>CHOCOLATE COVERED PINEAPPLE</b> .....	1-lb. box 35¢
<b>CHOCOLATE COVERED CHERRIES</b> .....	1-lb. box 25¢

## Holiday Special

NONE SUCH  
**MINCE MEAT**.....

<b>GULF KIST</b> (5 oz. Cans) <b>OYSTERS</b> .....	2 for 25¢
<b>LYNDEN</b> (16 oz. Glass) <b>CHICKEN and NOODLES</b> .....	23¢

12 oz. Can Del Maiz <b>NIBLETS</b> .....	2 for 25¢
<b>HILL'S RED CAN COFFEE</b> .....	lb. 28¢

## RATH'S "TENDER-D" PICNIC HAMS

lb. 25¢

<b>BLACK SWAN</b> or <b>GOLDEN CORN</b> , No. 2 Can <b>SWEET CORN</b> .....	10¢
<b>BLACK SWAN</b> No. 2 1/2 Can <b>PRUNES</b> .....	15¢
<b>GOLDEN SWAN</b> , No. 2 Can <b>PINEAPPLE or GRAPE FRUIT JUICE</b> .....	2 for 25¢

<b>SUNSWET</b> Medium 2 lb. pkg. <b>PRUNES</b> .....	2 pkgs. 25¢
<b>CRIPPLED WHEAT</b> Package.....	9¢

<b>B &amp; M Baked BEANS</b> No. 2 Can.....	14¢
<b>B &amp; M Kidney BEANS</b> Large Can.....	10¢

<b>GOLD MEDAL FLOUR</b> 5 lb. sk. 23¢ 10 lb. sk. 43¢	
<b>PALMOLIVE SOAP</b> BAR.....	6¢
<b>CRYSTAL WHITE SOAP</b> 3 Bars.....	10¢
<b>PEET'S GRANULATED SOAP</b> Large.....	26¢
<b>SUPER SUDS</b> Giant 17c Large.....	9¢

## BRILLO..... Sm. 8¢ lge. 16¢

## YOUR ASSOCIATED GROCERS

**GEO. H. COLBURN**  
645 Sartori Ave., Torrance, Phone 622

**DOAN'S MARKET**  
2223 Torrance Blvd., Torrance, Phone 486

**RICHARD COLBURN**  
1801 Cabrillo Ave., Torrance, Phone 110

"MILD AND MELLOW"

## EIGHT O'CLOCK COFFEE 17¢

3-lb. 50¢ lb. 17¢

## "RICH & FULL BODIED COFFEE" RED CIRCLE

1-lb. bag 21¢

## "COFFEE SUPREME" BOKAR COFFEE

1-lb. can 23¢

## EASTERN SLAB BACON

By the Piece  
27¢ lb.

## SKINNED HAMS

12-14 lbs. lb. 27¢ Whole or Shank Half

## 100% PURE PORK SAUSAGE

lb. 25¢ "Our Own Make"

## EASTERN GRAIN-FED PORK LEG

OR LOIN ROAST lb. 21¢

## GROUND BEEF lb. 12 1/2¢

Swift's Premium or Cudahy's Puritan Fancy Eastern  
BACON 1-lb. ctn. 33¢ pkg. 17¢

## FLUFFO BULK SHORTENING

3 lbs. 29¢

## GRAIN-FED "BRANDED" STEER BEEF, 7-BONE ROAST CENTER CUT "Best Cuts" lb. 17¢

## GRAIN-FED "BRANDED" STEER BEEF STEAK ROUND OR SWISS lb. 25¢

<b>POLK'S FLORIDA GRAPEFRUIT</b> No. 2 12¢	<b>DOLE'S PINEAPPLE GEMS</b> 14-oz. 9¢	<b>GOLD MEDAL "SUNVITE" SPAGHETTI OR MACARONI</b> 1-lb. 12¢
<b>MISSION INN HALVES PEACHES</b> 3 No. 1 25¢	<b>DOLE'S PINEAPPLE JUICE</b> 46-oz. 25¢ No. 2 10¢	<b>MINUTE TAPIOCA</b> pkg. 10¢
<b>CLOROX A-1 PANCAKE FLOUR</b> 40-oz. 17¢	<b>STANDARD OR PIMENTO CHEESE</b> 6-oz. 15¢	<b>FANCY NEW YORK STATE APPLE SAUCE</b> 3 No. 2 25¢
<b>IONA-WITH TOMATO SAUCE PORK &amp; BEANS</b> 22-oz. 15¢	<b>PABST-EFF</b> 6-oz. 15¢	<b>ANN PAGE SALAD DRESSING</b> pint 15¢
<b>ANN PAGE-WITH TOMATO SAUCE PORK &amp; BEANS</b> 3 1-lb. cans 17¢	<b>SULTANA P-NUT BUTTER</b> 2-lb. jar 25¢	<b>DEL MONTE PINEAPPLE JUICE</b> No. 1 7¢
<b>CALIFORNIA TOMATOES</b> 3 No. 2 25¢	<b>SULTANA P-NUT BUTTER</b> 1-lb. jar 15¢	<b>ASPARAGUS STYLE STRING BEANS</b> 1-lb. can 12¢
<b>DEL MONTE GARDEN SPINACH</b> No. 2 10¢	<b>DEL MONTE SEEDLESS RAISINS</b> 15-oz. 6¢	<b>CALIFORNIA PURE HONEY</b> 1-lb. jar 15¢
<b>ASSORTED FLAVORS SPARKLE Desserts &amp; Puddings</b> 3 pkg. 13¢	<b>VICTORIA PREPARED MUSTARD</b> 1-lb. jar 9¢	<b>ARMOUR'S STAR CORNED BEEF</b> 12-oz. can 17¢
<b>B &amp; M CODFISH CAKES</b> can 10¢	<b>TREESWEET ORANGE BUTTER</b> 1-lb. jar 15¢	<b>ARMOUR'S STAR TAMALES</b> 11-oz. can 10¢
<b>COLD STREAM PINK SALMON</b> No. 1 11¢	<b>A &amp; P FANCY-SLICED PINEAPPLE</b> No. 2 14¢	<b>ARMOUR'S STAR LUNCH TONGUE</b> 6-oz. 19¢
<b>HEINZ TOMATO JUICE</b> 15-oz. can 7¢	<b>VACUUM PACKED COFFEE</b> CONDOR 1-lb. can 25¢	<b>ARMOUR'S STAR ROAST BEEF</b> 12-oz. can 20¢
<b>HEINZ FRESH CUCUMBER PICKLES</b> 24-oz. jar 19¢	<b>SWISS FOOD DRINK OVALTINE</b> \$1 size 59¢	<b>SWIFT'S PARD DOG FOOD</b> 3 1-lb. cans 25¢
<b>ASSORTED HEINZ SOUPS</b> med. 12¢	<b>GEBHART'S-WITH BEANS CHILI CON CARNE</b> No. 1 12¢	<b>EXCELLENT FOR COOKING MAZOLA OIL</b> quart 39¢
<b>Egg Chicken Gumbo, Consomme, Clam Chowder</b>	<b>"SOFT AS OLD LINEN" SCOT TISSUE</b> 3 rolls 20¢	<b>PINT, 20¢ 1/2-GAL., 60¢</b>

## ORANGE PEKOE NECTAR TEA

1-lb. pkg. 15¢ 1/2-lb. pkg. 29¢

## DEL MONTE CREAM STYLE SWEET CORN

No. 2 can 10¢

## TRIPLE-CREAMED SHORTENING SPRY

3-lb. can 51¢ 1-lb. can 19¢

## DEL MONTE PEACHES

No. 2 can 15¢ SLICED OR HALVES

## GOLD MEDAL "KITCHEN TESTED" FLOUR

10-lb. sack 43¢ 24-lb. 95¢ 49-lb. \$1.85

## HAMILTON'S FANCY EASTERN SAUERKRAUT

No. 2 can 10¢

## LIKED BY CHILDREN CRACKER JACK

3 pkg. 10¢ PRICE 3 FOR .097 TAX .003

## KELLOGG'S ALL BRAN

18-oz. pkg. 19¢

## POST'S HUSKIES

WHEAT FLAKES 10-oz. pkg. 10¢

## FRESH FRUITS & VEGETABLES

## FANCY NORTHERN JONATHAN APPLES

6 lbs. 23¢

## FANCY NEW CROP NAVEL ORANGES

doz. 10¢

## EATMOR FANCY CAPE COD CRANBERRIES

2 lbs. 25¢

## SNOW-WHITE CAULIFLOWER

large head 4 1/2¢

## FANCY CELERY

UTAH TYPE large stalk 9 1/2¢

GROCERY PRICES EFFECTIVE THROUGH MONDAY, DEC. 20; MEAT & VEGETABLE PRICES EFFECTIVE THROUGH SATURDAY, DEC. 18, 1937. WE RESERVE THE RIGHT TO LIMIT QUANTITIES. ADDRESS: 1319 SARTORI