



The  
**National**

Helps Make It a More

**Thankful  
Thanksgiving**

This  
**THANKSGIVING SPECIAL**  
Will Interest You!

**38** PIECE SET METLOX "POPPY TRAIL"  
POTTERY and  
**26** PIECE SET HANDSOME  
COLORED HANDLE KNIVES,  
FORKS, SPOONS  
**64** PIECES **\$15.90**  
COMPLETE  
Regular \$20.95



THIS SPECIAL OFFER CONSISTS OF:

6 PLATES 6 FRUIT DISHES  
6 CUPS 6 CHILI BOWLS,  
6 SAUCERS  
6 BREAD AND BUTTER PLATES  
1 ROUND CHOP PLATE  
1 ROUND VEGETABLE BOWL  
6 FORKS 1 BUTTER KNIFE  
6 KNIVES 1 SUGAR SHELL  
6 TEA SPOONS

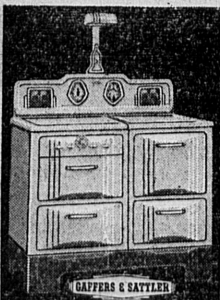
**\$1.00 DOWN 50c WEEKLY**

3 PIECE  
**CARVING  
SETS**  
**\$1.50** UP

ROASTERS — DISHES  
AND ALL THANKSGIVING COOKING NEEDS!

**Gaffers & Sattler**

MODEL 440 CLM  
**GAS  
RANGE**



Wouldn't the Mrs. thrill to a new Gaffers & Sattler Gas Range on Thanksgiving morning! What a pleasure it would be then to cook the big dinner. And you'll be surprised how easy it is to buy, what with such a small down payment and such small weekly payments. Come in. Let us show you Gaffers & Sattler!

**\$152.55** AND YOUR OLD RANGE  
**\$5.55 DELIVERS \$3.33 Per Month**

**NATIONAL**  
HOME APPLIANCE COMPANY  
HARRY M. ABRAMSON "Friendly Credit"  
**1312 Sartori Phone 78**

## Tells of Work



**AMBROSE N. DIEHL**  
President of the Columbia Steel company who announced the start-on construction of the new office structure this week.

### Columbia Building Office Structure in Los Angeles

Another improvement will be a seven foot concrete wall 320 feet in length, surrounding a paved parking space having an area of 7,500 feet on the site now occupied by the existing sales building.

Shows Steel Uses  
The old building will be demolished as soon as the new structure is completed.

The building will be fitted thruout with many innovations demonstrating the variety of the uses of steel and will thus illustrate to customers and visitors the possibilities of steel in construction and decoration.

Plans for the building were completed under the supervision of Arthur G. Brown, Columbia Steel sales manager for the Los Angeles district and E. M. Barber, superintendent of the company's mill at Torrance.

**VISIT PLANE FACTORY**  
Fifteen boys, members of Narbonne high school's Airplane club, recently made a visit to the North American airplane factory near Inglewood.

**Frespuo**  
**Artesian Water**

**Phone**  
**Torrance 621W**  
Gardena, Phone 1981

## World Upswing In Trade Rides On U. S. Buying

WASHINGTON, Nov. 18 (U.P.)—The United States is leading the way in rapid recovery of world trade, according to a survey just completed by the Department of Agriculture.

The survey prepared by department economist R. B. Schwenger disclosed an "abrupt rise in the quantity of world trade during the first half of 1937."

An index prepared by department economists showed world trade during the second quarter of this year equal to that of 1929. The index for the last quarter of 1936 was at 87 percent of 1929.

**Raw Imports Important**  
A detailed analysis shows an important part of the increase has been due to United States imports of a wide variety of commodities, especially of such raw materials as rubber and wool," Schwenger said.

World trade had lagged far behind world industrial production since 1932, the economist said, due to the increase in trade barriers during the depression. He suggested these barriers must be relaxed or removed before complete recovery can take place.

In recent months, due to partial relaxation of trade barriers, world trade has been increasing much more rapidly than world industrial production. If the rise continues, Schwenger said, the two indices may be expected to be at the same level before the end of the year.

### Local Students at Compton J. C. Seek Yule Jobs

Seeking employment in local stores during the Christmas vacation for Torrance students who attend Compton Junior college, A. F. Hughes, personnel director for that institution, interviewed Harvel Gutfenfelder, president of the Torrance Retail Merchants' association this week.

Hughes said that a large number of Compton students will be employed in Compton during the holiday season and he wanted to know if Torrance merchants would cooperate with the college authorities in placing local young people in such part-time work here.

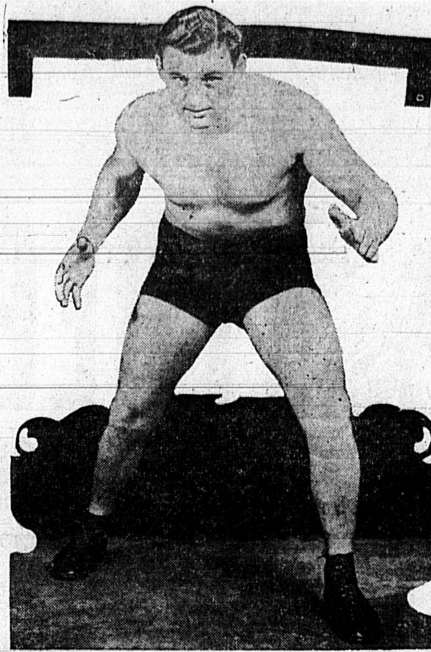
Gutfenfelder asked Hughes to furnish him with a list of Torrance students who want holiday jobs and said he would send a letter with copies of this list to all members of the local association.

**HURRY!**  
**HURRY!** Only a Limited Number  
**HURRY!** of These Special Xmas Card Sets to Go at This Low Price  
Several Days Required to Print Name!

**50 Charming Christmas Greeting Cards with your name**  
ALL TWO-FOLD FOLDERS with ENVELOPES for only **\$1.00**  
YOUR CHOICE OF SEVERAL DESIGNS

**RB CUT RATE DRUG**  
**1316 Sartori Ph. 731**

## Risks Title at Hawthorne Tonight



**JUNIOR HEAVYWEIGHT CHAMP DEL KUNKLE**

Main event on the Hawthorne Stadium mat card tonight will be staged by Del Kunkle, claimant of a world title, and Al Schizler of Inglewood, who seeks to knock that crown off Kunkle's brow. Other attractions at the Stadium tonight are: Roy Rigel of Florida vs. Hans Schuit, who asserts he owns the German heavyweight laurels; Pancho Villa, middleweight champ of Mexico, vs. Bill (Little Caesar) Grubs, and Mike (Wild Man) Works vs. Louie Mayo, the Mexican tenor.

### Tartars Meet Bell in L. A.

(Continued from Page 5-B)  
are to be provided by Banning vs. North Hollywood, Roosevelt vs. Fairfax, Jefferson vs. Los Angeles, Gardena vs. Marshall and Manual Arts vs. San Fernando.

Principal Thomas Elson said today that classes will be dismissed at the high school here at noon on Nov. 21 in order to allow students ample time to get to the Coliseum. There are 1,000 seats apportioned for the Torrance delegation, these being located between Turnels 9 and 10, which is not a particularly choice vantage point but the best the local school could rate this year.

Student admissions will be 15 cents, adults 35 cents. Twenty-five players, two managers and coaches are allowed free admission. All of the proceeds from the band carnival and football games will be used for P. T. A. welfare work in the Los Angeles city school system.

The merchants could make their own decision. A copy of Gutfenfelder's introductory letter to the merchants will be sent the Compton Junior college officials to show the association's good faith in this matter.

**SUBSCRIBE TODAY!**  
The Torrance Herald carries all the news. Don't be an "outsider"—Subscribe today!



**FREE MAKE-UP!**  
To introduce Contour to our patrons we are giving, for a limited time, a free make-up, applied while you're having your hair waved or your nails manicured.

**B. Richardson**  
**1331 EL PRADO**

## SPORT SHOTS

(Continued from Page 5-B)

This year he's got my endorsement for All-Marine and I'm informed that Joe Goss, San Pedro sports editor, has his eye on Rossett for this as well as the other honorary squads. Leo tells me he wants to continue his scholastic and athletic career at Loyola, Santa Clara, St. Mary's or Notre Dame. I wouldn't be surprised to see Loyola pick him off.

Bernie Donahue, former Tartar coach, has told me that Leo is the best high school guard he has ever seen in action. This opinion is endorsed by Coach Roy Cochran and Ben Comrada. As an indication of Rossett's stamina, he's been known as a 60-minute player for three years on the Tartar team and has only had two time-outs for injuries—once in '35 and the other in '36.

I know that his many friends here are rooting for him to get the recognition he deserves. I am glad to join them in their Rossett-for-All-Southern-California and L. A. school system team.

### Pro Night Game Friday Credit to 20-30 Club

**HOLLYWOOD** All-Stars and the San Pedro Longshoremen will be the sports dish of entertainment to Harbor district grid fans tomorrow night, at 8 o'clock on the city park field. Special lighting facilities have been arranged to display the first night game in the history of the city. Tickets are now on sale at a half-dozen or more local stores for this event, which is sponsored by the 20-30 club.

I hope the young fellows in the organization don't lose their shirts on the venture because it deserves patronage of all fans of the "national sport."

### PLAN SOCCER TOURNAMENT

A junior high soccer tournament at Narbonne high school will be held Nov. 30, through Dec. 20. This tournament is a round robin, with each team playing five games.

## School Pension Board Named

George H. Naegele, Los Angeles banker, has been appointed chairman of the new retirement system board of the Los Angeles city school district, which serves Torrance, by action of the board of education at its regular meeting Monday night.

Naegele is vice president and cashier of the Farmers and Merchants National Bank, and will serve for three years. Three other members were appointed to serve with Naegele. They are Grace S. Storrmer, assistant vice-president of the Bank of America, who will serve for two years; and Dr. Edward M. Pallette, who is to serve a one-year term. Howard L. Byram, county treasurer and tax collector, is a fourth member of the committee. Three other members are to be appointed by teachers and others who will benefit under the pension plan, it was explained.

## Townsend Club

Activities  
By BETH PAIGE

Members of the Torrance club have been busy attending Townsend meetings outside. To say we are greatly pleased with our new superior and the way he keeps things humming is putting it mildly. Saturday evening a big meeting was held at the 96th Street school where Fred Wagner as speaker, and Mrs. Stark and Mrs. Burnham put on a well-rounded program. The "Townsend Sunday Club" fills a long-felt want too; meets at headquarters every Sunday afternoon. Ex-Congressman John H. Wier, "Bob" Adams, Ralph Horton and Mrs. Bessie Reyhle all of the Speakers Bureau, were at their best. Theodore Felt, conductor; Mrs. Paige, pianist, made that huge audience sing as never before.

Monday night the local club went to Gardena where a fine program by youthful musicians, moving pictures in technicolor of the government's vast building program were most interesting. Tonight our usual meeting place, the Elementary school auditorium, Marina at 220th street, will bring a speaker new



**"That's the way to finance a car...."**  
**Bank of America TIMEPLAN**  
Auto Financing enables you to build **BANK CREDIT** for every family need

Timeplan also offers you the lowest financing cost available. You pay no brokerage fee, bonus or commission. The insurance may be placed through your own agent or broker. Timeplan offers you the usual monthly payment privileges plus friendly neighborhood service through the branch of Bank of America near you.

You need not be a depositor of Bank of America to finance your next car through Timeplan.

**Bank of America**  
NATIONAL TRUST AND SAVINGS ASSOCIATION  
Member Federal Deposit Insurance Corporation  
SAY HAYES BRINGS YOU BANK OF AMERICA "NEWTIME" 10 P. M. NIGHTLY EXCEPT SATURDAY, KSFQ-KNX

**GAME NEXT SUNDAY**  
Next Sunday afternoon the Torrance Merchants will play the Wilmington Tigers at Skipper's field, which is located two blocks south of Anaheim boulevard and two blocks east of Main street in Wilmington.

to many, J. W. Jennings. Some young musicians are expected and all citizens of Torrance are invited.

Phone 444 For Ad Service

## OVERSTOCKED WE MUST SELL

A Tremendous Quantity of Merchandise Between Now and Thanksgiving to Make Room for Christmas Gift Items... Our Loss-Your Gain... Below Are Just a

Few of the Many **BARGAINS!**

**Sheet Blankets** ..... **37c**  
**Double Blankets** ..... **\$1.00**

**Extra Large White Sheet Blankets** ..... **79c**

**Mens' Heavyweight Winter Union Suits** ..... **67c**

**Mens' Heavyweight Waist Overalls** ..... **98c**

**Mens' Heavyweight Bib Overalls** ..... **69c**

**Mens' Heavyweight Sailor Style Overalls Sanforized** ..... **89c**

**Women's Outing Gowns Stripes and Plains Full Sizes** ..... **47c**

**Women's Full Mercerized Cotton Hose** ..... **25c**

**Women's Tuck Stitch Vests** ..... **19c**

**Children's Tuck Stitch Panties** ..... **17c**

**Children's Tuck Stitch Vests** ..... **17c**

**Women's Rayon Slips Extra Quality** ..... **47c**

**Women's Rayon Taffeta Slips** ..... **37c**

**Children's Outing Flannel Pajamas** ..... **33c**

**Baby Blankets** ..... **19c**

**Fast Color Gladio Prints** ..... **7c**

**Women's Rayon Panties Broken Lots and Sizes a Bargain** ..... **14c**

**Nation Wide Sheets 81x99** ..... **93c**

**All Sizes Men's Fancy Socks** ..... **5c**

**Men's Work Socks Limited Quantity** ..... **8c**

**ONLY 31 SHOPPING DAYS UNTIL CHRISTMAS!**

**BUY your GIFTS now on our EASY LAY-AWAY PLAN!**

Stocks are complete and prices are low and it is to your advantage to take up this easy lay-away plan and avoid the last minute rush.

You will also get what you want and will not have to take something that you will not like.

**PENNEY'S**  
**1269 Sartori, Torrance**