



**For Health . . .  
Eat Meat  
For Economy . . .  
Buy It At Grubb's**

Healthy persons eat meat . . . and economy-wise persons ALWAYS buy at Grubb's. Why? For two reasons:  
Grubb's has the BEST QUALITY meats you can buy, and . . .  
Grubb's SAVES you money by selling you the best for less!!

**GRUBB'S MARKET**  
CHOICE MEATS  
PHONE 779-TORRANCE  
IN SAFEWAY STORE 1929 CARSON ST.

**ASSOCIATED  
GROCERS**  
INDIVIDUALLY OWNED STORES

**August Food Sale**

SPECIALS FOR FRIDAY and SATURDAY, Aug. 13-14

LUX TOILET SOAP . . . . . 2 for 13¢

LIFE BUOY SOAP . . . . . 2 for 13¢

LUX FLAKES . . . . . Sm. 10c; Lg. 22¢

**PILLSBURY'S**

FARINA Small 10c PANCAKE FLOUR Sm. 10c Lg. 20c

Miracle Whip Pt. 23c Qt. 37c Lb. 21c 3 lb. 59c

RINSO Sm. 5c Lg. 21c

SPRY Lb. 21c 3 lb. 59c

POWOW 2 for 19c

**GOLD MEDAL**

Macaroni Spaghetti 1-lb. Cello. 2 for 27¢

BLACK SWAN TUNA 1/2s . . . . . 15c

BLACK SWAN FLOUR 10 lbs. . . . . 39c

MARGARINE Gem Nut, lb. 16c

DERBY—1-lb. Can Tamales . . . . . 15c

**POST TOASTIES**

KELLOGG'S BOX 7c

**CORN FLAKES**

MAXWELL HOUSE COFFEE . . . . . Lb. 28¢

**"JUNKET" Rennet Mix 10¢**

For Making Ice Cream

BLACK SWAN HOMINY . . . . . No. 2 1/2 can 9¢

**FAMOUS GOLDEN SWAN**

PINEAPPLE JUICE— 1 lb. 14 oz. 30¢

PINEAPPLE, SLICED No. 2 1/2 Can 20¢

EVAPORATED MILK 3 Tall Cans 19¢

BLACK SWAN SHOE PEG CORN No. 2 Can 2 for 25¢

BLACK SWAN APRICOTS . . . . . No. 1 Can 10¢

**YOUR ASSOCIATED GROCER**

**RICHARD COLBURN**

1801 Cabrillo Ave., Torrance, Phone 110

**GEO. H. COLBURN**

645 Sartori Ave., Torrance, Phone 622

**DOAN'S MARKET**

2223 Torrance Blvd., Torrance, Phone 486

## Recovering



Marion Talley, opera and radio star, tunes in on her radio for entertainment while recovering in a Hollywood hospital from a recent operation for appendicitis.

**ROUTES GOOD**  
Both the coast and inland routes to San Diego and the resorts just below the Mexican border are in good condition.

## Inglewood Host To C. C. Tonight

A delegation of Torrance Chamber of Commerce members, headed by President E. M. Barber, will attend the dinner-meeting of the Harbor District Chambers of Commerce tonight at Veterans Memorial hall in Inglewood. Sheriff Eugene Biscailuz will be the principal speaker. The Inglewood chamber, as host, will furnish the entertainment.

## Local Students Win High Scholastic Honors at U. S. C.

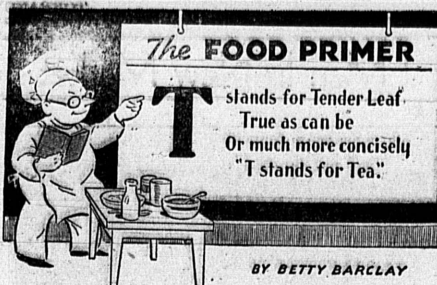
Miss Alice Burger, 1104 Cedar avenue, and Pete Zaniperni, 2028 Gramercy street, were included among 281 University of Southern California students who made high scholastic records of no grade less than "B" during the past semester, it was revealed by Registrar Theron Clark this week. Perfect report cards of all "A" grades were received by 19 Trojan students for the same period. For the first time men students outclassed the coeds in garnering the high grades with the survey showing 163 men in the high bracket as compared to 137 women, Clark reported.

## You can't beat this combination! Quality + Economy

Hale Free Stone <b>PEACHES</b> 6 lbs. 25¢	FRESH <b>CUCUMBERS</b> Each 1c
Your Last Chance! WHITE ROSE <b>POTATOES</b> 25 lbs. 25¢	Choice Bartlett 3 lbs. <b>PEARS 15</b>

## Quality Super Market

1325 SARTORI AVENUE VEGETABLE DEPT.



**The FOOD PRIMER**  
T stands for Tender Leaf. True as can be Or much more concisely "T stands for Tea."  
BY BETTY BARCLAY  
In spite of the fact that more than 20 billion cups of tea are consumed in the United States every year, and that about 4 out of 5 people drink it, very little is generally known by Americans about tea. It is just taken for granted. But there are some surprising facts in its story.  
All tea, — black, green and oolong — is the same on the bush. The bushes, no matter where they grow, are the same, except that climate and soil make a difference in quality, as they do with all plants. There is only one distinction among their leaves. Some are tender and some are tough. The tender leaves make the best tea.  
Tea can be grown successfully all the way from sea level to an elevation of over 6,000 feet; and at different elevations it has different quality. The high elevation tea has on the whole a better flavor and finer quality.  
Grocers' shelves hold many kinds of tea, but these are the result of "manufacturing" operations by the companies placing them on the market. Before it is treated in the factories, tea is just tea. There are three types of tea in modern use: (1) green or unfermented; (2) oolong or semi-fermented; (3) black or fully fermented. In the black tea division there are four principal classifications as to size of leaf. They are called broken orange pekoe, orange pekoe, pekoe and souchong. These terms are often misused by the American public. They mean only the size of leaf, from smallest to largest, in black tea. Ordering "orange pekoe tea" means ordering black tea. It does not mean any definite quality standard, as orange pekoe from poor soil and climate is not at all as good as orange pekoe from good soil and more favorable climate. The best way to get a good high quality standard of tea is to order by the manufacturer's brand name.  
My authority is Robert A. Lewis of Boston, a member of the United States Board of Tea Experts appointed by the Federal government to make annual tests of the tea importations for the purpose of establishing standards of quality which all importations must meet. He speaks with authority because he has tested tea for the producers of Tender Leaf Tea for 33 years. He summarized by saying that although all tea is alike on the bush, there are many grades in quality, due largely to the climate and soil where it is grown, and that the best way to get good quality is to order tea by a well known name in which you have confidence.

## Brothers Going East to Study

Comet Brooks, son of Mr. and Mrs. Willis J. Brooks of Portola avenue, left Saturday night for New York where he will resume his studies in New York where he will resume his studies in New York University in September. He plans to visit relatives in Minnesota and then will be joined by his brother, Phillips, in Chicago to continue the eastward trip.

Phillips Brooks will return home here Sunday from Stanford University. Mr. and Mrs. Brooks are going to Palo Alto Saturday night to get him there. He will continue his work on his research problem for 10 weeks in the laboratories of the Rockefeller Foundation in New York, Harvard University and Woods Hole, Mass.

## INTEND TO WED

Notices of intention to marry were filed this week by the following residents:

Clifford J. Wilson, 36, of 2165 240th street, Lomita, and Emma Zoethout, 26, of 2120 Redondo boulevard, Lomita.

Jay Gasser, 22, of Lomita, and Muriel S. Clayton, 22, of 25635 Pennsylvania avenue, Lomita.

The rim drive encircling Crater lake is in excellent condition. In many spots the road hugs the rim offering many advantageous views of the lake.

## Returns Home



NEVA JUNE and PATCHES . . . he got a souvenir

Bubbling over with stories of great adventures in England, France and Washington, D. C., Neva June, 11-year-old daughter of Mr. and Mrs. C. D. Lowen returned to her home at 904 Beech avenue Sunday, ending a splendid vacation trip of more than three months.

The little girl who left here April 30 with Mrs. Roy P. Mautsby of Los Angeles, a friend of the family, thrilled to the pomp and pageantry of the British coronation last May; went to Paris and was a guest of U. S. Ambassador to France William C. Bullitt, a personal friend of her father, when he opened the United States' building at the International Exposition early in July.

She returned aboard the Queen Mary, a month ahead of her scheduled departure in order to be assured of passage on that new liner. In the nation's capital, where she spent 10 days, Neva June saw Congress in session and visited many historic spots that will make her Fern street school studies more real. She made daily entries in a journal that her parents are now reading with great interest and brought home many souvenirs—including one for her poodle, Patches.

## SCENIC DRIVE TOPS

The rim drive encircling Crater lake is in excellent condition. In many spots the road hugs the rim offering many advantageous views of the lake.

## MOTOR LAW CHANGES DUE ON AUG. 27

Among numerous changes in the State Law concerning motor vehicle operation are the following, effective August 27:

Stop signs hereafter stalled must be illuminated reflectorized type to make the visible at night.

Persons involved in traffic accidents, or their representatives are permitted to obtain information from police reports. For the past two years such reports have been classified as confidential.

## Ban Gadgets

Police officers are authorized to remove vehicles (illegal parked so as to block the entrance to a private driveway) Radiator caps or ornaments must not project to the front of the face of the radiator on any new vehicle 50 cc. or after Jan. 1, 1938.

The driver of a vehicle made jointly liable with the owner for damages to highways or bridges resulting from overloading trucks or trailers. Deliberate making of a false statement in any document filed with the Department of Motor Vehicles, or the concealment of a material fact, is made a misdemeanor.

Full name instead of initials required, with actual business or residence address, on all applications for registration.

## Oldsmobile Models Increased \$45, Dealer Learns

Word was received this week by Mullin's Service that the price of all Oldsmobile models were increased \$45, effective Monday, August 9. "The increase in Oldsmobile prices at this time partially reflects the rise in costs of labor and material that has been experienced during the past months," said D. E. Ralston, Oldsmobile general sales manager.

Farm Has 50 Palomino Horses RENO, Nev. (U.P.)—The largest stable of Palomino horses in the world are located at the Nevada stock farm.

# Smashing Specials!

Unsurpassed values! More opportunities to cut your food bill . . . and more proof that it saves to trade at A & P!

<b>FULL CREAM CHEESE TILLAMOOK</b> lb. 25¢	<b>DEL MONTE SLICED PINEAPPLE</b> No. 2 can 13 1/2¢	<b>IONA—WITH TOMATO SAUCE PORK &amp; BEANS</b> 3 28-oz. cans 25¢
<b>DEL MONTE PEAS</b> EARLY GARDEN No. 2 can 12 1/2¢	<b>EIGHT O'CLOCK COFFEE</b> 3-pound bag, 55c lb. 19¢	<b>IDEAL MEDIUM PRUNES</b> 2-lb. pkg. 12¢
<b>MIRACLE WHIP</b> (Pt. jar, 37c) 23¢	<b>SPAGHETTI</b> 1-lb. pkg. 12¢	<b>Encore Stuffed Green OLIVES</b> 2-ounce glass 10¢
<b>GOLDEN AGE MACARONI OR SPAGHETTI</b> 1-lb. pkg. 12¢	<b>COCOMALT</b> 1-lb. can 35¢	<b>DEL MONTE TOMATO CATSUP</b> 14-oz. bottle 12¢
<b>DURKEE'S TROCO</b> lb. 19¢	<b>BEN HUR COFFEE</b> lb. 27 1/2¢	<b>FRANCO-AMERICAN SPAGHETTI</b> 1-lb. can 8¢
<b>SPARKLE</b> DESSERTS & PUDDINGS pkg. 3 1/2¢	<b>FLOUR</b> 24 1/2 pounds, \$1.09 49 pounds, \$2.15 10-lb. sack 48¢	<b>CAMPBELL'S TOMATO JUICE</b> 34-oz. can 6¢
<b>GINGER ALE</b> (plus dep.) 3 large bottles 20¢	<b>TOMATOES CALIFORNIA</b> 3 No. 2 cans 23¢	<b>DEL MONTE TOMATOES</b> 14-oz. can 8¢
<b>POST TOASTIES</b> OR KELLOGG'S CORN FLAKES reg. pkg. 6¢	<b>POST TOASTIES</b> OR KELLOGG'S CORN FLAKES reg. pkg. 6¢	<b>CALIFORNIA TOMATOES</b> 3 No. 2 cans 20¢
<b>TO A&amp;P—TO SAVE!</b>	<b>TO A&amp;P—TO SAVE!</b>	<b>MISSION INN SPINACH</b> 1-lb. can 10¢
<b>PRICES EFFECTIVE THURSDAY, FRIDAY &amp; SATURDAY, AUGUST 12, 13 &amp; 14, 1937.</b>	<b>PRICES EFFECTIVE THURSDAY, FRIDAY &amp; SATURDAY, AUGUST 12, 13 &amp; 14, 1937.</b>	<b>P &amp; G WHITE NAPHTHA</b> 1-lb. can 21¢
<b>WE RESERVE THE RIGHT TO LIMIT QUANTITIES.</b>	<b>WE RESERVE THE RIGHT TO LIMIT QUANTITIES.</b>	<b>SPRY SHORTENING</b> 3-lb. can 59¢
		<b>EVAPORATED MILK</b> WHITE HOUSE tall can 6¢

## MEAT DEPT. SPECIALS!

<b>FANCY SPRING BABY MILK LAMB LEGS</b> LAMB SHOULDER, lb. 19c lb. 29¢	<b>PICNIC HAMS</b> 4-6 lbs. Avg. lb. 29¢
<b>WIENERS &amp; CONEYS</b> lb. 19¢	<b>GROUND BEEF</b> lb. 15¢
<b>ROASTS</b> 7-BONE CHUCK CENTER CUT lb. 18¢	<b>SHORTENING</b> Bulk lb. 12 1/2¢
<b>SLICED BACON</b> 1-lb. pkg. 19¢	<b>STEAKS</b> Round or Swiss lb. 28¢

<b>FRESH FRUITS &amp; VEGETABLES</b>	<b>"THE PICK OF THE CROP"</b>
<b>APPLES</b> 5 lbs. 15¢	<b>PEACHES</b> 3 lbs. 10¢
<b>PEARS</b> lb. 5¢	<b>TOMATOES</b> 3 lbs. 10¢
<b>GRAPES</b> 3 lbs. 13¢	
<b>LIMA BEANS</b> lb. 5¢	

# A & P FOOD STORES

THE WORLD'S LEADING FOOD MERCHANTS

1319 SARTORI AVENUE, TORRANCE