

Pompeian Fruit Dressing
 1/2 cup vinegar
 1/2 cup sugar
 1 teaspoon salt
 1 teaspoon Ben-Hur mustard
 1 teaspoon Ben-Hur paprika
 Mix well and bring to boil.
 Cool and add:
 1 cup Pompeian Olive Oil
 1 teaspoon Ben-Hur celery seed
 2 cloves garlic.

Oven Breakfast
 375 degrees 1 to 1 1/2 hours
 Rhubarb
 Cornmeal mush.
 Wilson's Tenderized Ham
 Popovers

MAKES FOOD TASTE

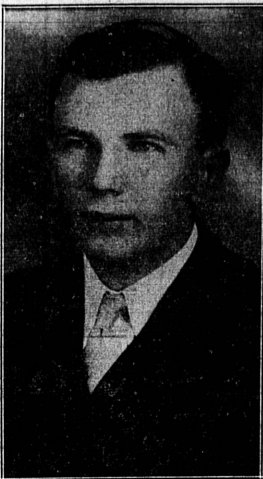


The original, and the largest selling thick sauce throughout the civilized world.

Steel Technician Going East For Laboratory Research Work

Within a few days, Walter Wallace, junior metallurgist at the Columbia Steel plant, will leave for Kearny, N. J., where he will enter training in a research laboratory maintained by the U. S. Steel Corporation. A graduate in metallurgy at Washington State College, Wallace has been connected with the local plant since April, 1936.

Wallace has also been serving as editor of "The Steel Blade," Columbia monthly publication. George Haig is expected to succeed him in this capacity. Wallace, who is single and lives at 921 Sartori avenue, has many friends here who are wishing him success in his post-graduate training.



WALTER WALLACE
...back to class room

Brown Bread
 1 cup graham flour
 1/2 cup yellow corn meal
 1/2 teaspoon soda
 1/2 teaspoon salt
 1/2 cup molasses
 1/2 cup Mayfair sweet milk
 1/2 cup sour milk
 1/2 cup Iris raisins floured
 Method: Mix dry ingredients. Combine molasses with milk and add with raisins to dry ingredients. Steam in covered cans above beans last 3 or 4 hours of cooking.

HINCKLEY'S GROCERY

24020 Narbonne
 Phone 452
 "The Small Store With Big City Prices"
 Now 100%
C. I. O.

Danish Sailor Burned At Sea Brought to Hospital Here

A victim of severe burns suffered several days ago at sea, Ernest Jensen, 35, native of Denmark, was received at Jared Sidney Torrance Memorial hospital last night at 11 o'clock. He was removed from the S. S. Peter Mearsk, Danish vessel, when it docked at the harbor. Jensen's hands and arms were badly burned and he is expected to remain at the hospital for some time.

REFUSE REQUEST

Because only Class A, B or C buildings are allowed in the retail district, the city council refused to grant Dr. C. L. Ingold's request Tuesday night for permission to build a galvanized-iron garage at the rear of his office building on Marcelina avenue.

HIGH CASH OUTLAY

Cash outlay of cities, counties and the state during 1935-36 reached an all-time high of \$973,000,000 and exceeded all previous years by nearly \$70,000,000.

TO PICK DIRECTORS

Members of the Lomita Chamber of Commerce will ballot on directors for the 1937-38 term next Monday night, June 28. Ballots were mailed out this week and these contained 19 names. Nine are to be elected.

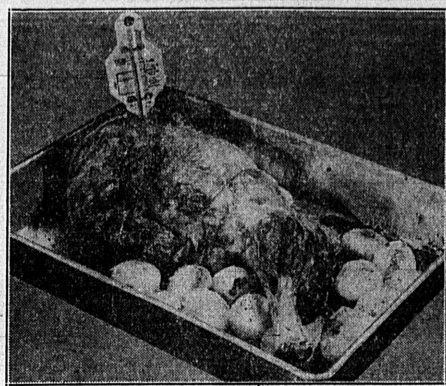
ERROR IN NAME

The first name of Everard W. McManus was incorrectly reported as "Jim" in last week's Herald story about the reelection of all officers of Columbia Steel lodge of the C.I.O. McManus is vice-president.

Special Pot Roast

Wilson's Certified Beef (about 3 pounds)
 Iris Stuffed Olives
 2 Tablespoons A-1 Sauce
 Method: With a sharp knife cut slits in two sides of meat and insert olives and small pieces of meat. Brown meat in thrift cooker pan on surface unit in Crisco on all sides. Add small amount of water. Place in cooker well. Turn switch to high until steam comes from vent, then to low and let cook until tender.

NEW GADGETS TO TAKE GUESSWORK OUT OF HOUSEKEEPING



Jelly, Golf, Roast Beef, and Bridge-Playing All Fall Under Thermometer Control

EVEN if you've cooked for years for your seven little brothers and sisters and everyone admits you're the best fudge maker in the block, there's something about a kitchen of your own that puts you on your mettle! So, if you want to dazzle your spick-and-span new husband (or your family of fifteen years' standing, for that matter) with your culinary triumphs, be sure that your kitchen contains a complete set of cooking thermometers!

There's one for roast meat that tells you just when the roast is as rare or well-done as you want it (saves up to 25% of the juice most cooks waste, too). There's an oven thermometer; another with a long handle for testing deep fat; and a perfectly splendid one to do double duty for jollies and candy. No more tears over jam that won't jelly! It's as far into the limbo of forgotten things as burnt biscuits and mustard cups. When you're putting the finishing touches on your kitchen, have the carpenter nail a two-inch strip of wood shoulder high along the wall nearest your stove. Paint it to match the color scheme of your room. Then screw in a row of hooks for your kitchen thermometers with a hook at either end to hold a potliker.

The woman who doesn't forget details starts housekeeping a long step ahead. And practical details are often as important to the comfort of the more ornamental rooms as they are to the success of the

DEBT INCREASES

Total bonded indebtedness of the state, counties and municipalities increased nearly \$33,000,000 in the fiscal year ending June 30.

Executive Compares V-8 Motors



W. C. Cowling, Ford Motor Company, director of sales, who spent several days in Southern California as part of a nationwide tour which was just completed, is pictured as he pointed out the economical features of the V-8 "60" engine, introduced to the Ford line for 1937. According to Cowling, owners report from 22 to 27 miles per gallon of gasoline with this new engine size. Shows in comparison is the larger and more powerful Ford V-8 "85" engine, which has proven so popular in Ford cars.

Barn and Sign Only Building This Week

Only two building permits were issued here this week, T. H. Wright is erecting a barn on his property at 1803 West 190th street, at a cost of \$500; and the Roberts Liquor store, which will occupy the corner location at 1281 Sartori avenue, is installing a Neon sign at a cost of \$175.

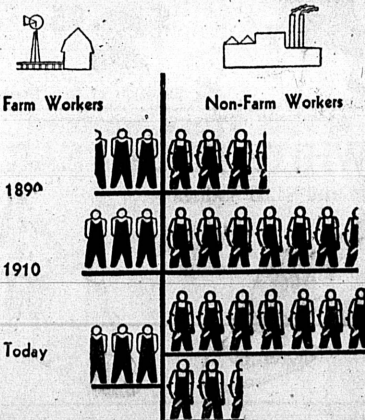
Three Babies Born Here Last Night

Twin boys were born at 8:45 and 8:47 last night at Jared Sidney Torrance Memorial hospital to Mr. and Mrs. Theodore Gibson of 1304 Compton boulevard, Gardena. A daughter was born to Mr. and Mrs. Sidney Williams of Hermosa Beach at the hospital at 7 o'clock last night.

Read Our Want Ads!

READ OUR WANT ADS

INDUSTRY CREATES JOBS



Each Figure Represents 4 Million Persons.

NEW JOBS DEPEND ON SCIENCE AND INVENTION IN INDUSTRY

America's new employment opportunities will be found on the country's industrial frontiers, and are dependent upon the development of science and invention, according to John W. O'Leary, president of the Machinery Institute.

"Farm employment has been declining both in actual numbers and in proportion to the nation's population far more than a generation, whereas business and industrial employment has been increasing, except for brief periods of depression, for more than a century," said O'Leary.

"Agriculture once supported almost 90 percent of the population. With geographical frontiers having ceased to expand, it is normal and not alarming that agricultural employment should cease to increase. Despite the decline in agriculture the total percentage of the population gainfully employed has increased from census to census almost without interruption. This has been possible only because science and invention have created vast new employment opportunities in manufacturing, handling, selling and serving non-farm products."

O'Leary cited figures from United States census reports

showing that total employment in the United States grew from less than 23½ million in 1890 to almost 49 million at the time of the last census. During that period the population almost doubled but agricultural employment increased by less than 10 percent. Jobs in the manufacturing and mechanical industries more than doubled, and there were more than three times as many in trade and transportation at the end of the period as at the beginning.

"There are many who assume that the era of opportunity in America is past," said O'Leary. "This pessimistic philosophy results from failure to take into consideration the fact that an industrial civilization is capable of growing in more than one way. If every family in the nation had every commodity and service which it needed and desired it would be true that industrial expansion could take place only as population increased and new territory was built up to care for new families. But man's needs and desires for goods and services which an industrial civilization can provide are limitless. And so long as they are the possibilities of industrial expansion are limitless."

New Frontiers Today
 "The industrial frontiers of today are the frontiers of new products, and of the fact that to improve old products and make them available to greater numbers than have ever enjoyed them before. Who would contend that these frontiers offer fewer opportunities for labor, management, inventive genius and all that helped to develop modern industrial civilization to its present stage?"



COMPARE OUR PRICES!

YOU WILL FIND ALL A&P PRICES AT A SAVING... THAT IS WHY HOUSEWIVES EVERYWHERE SAY

"IT SAVES TO TRADE AT A&P"

DEL MONTE PEAS EARLY GARDEN No. 2 can **12 1/2 C**

GRAPE JUICE Welch's quart (pint 19c) bottle **35c**
PINEAPPLE JUICE No. 2 can **10c**

SPINACH DEL MONTE GARDEN No. 2 can **12 1/2 C**

WESSON OIL "For Cooking" qt. pint can, 21c can **39c**
HORMEL SOUP TOMATO can **10c**

"CORONADO" BEER "STEINIE" 11-oz. bottle **5c**
 "PILSENGOLD" CANNED BEER, 3 12-oz. cans, 25c

SUGAR FINE GRAN. 10 pound paper 51c
 10 pound cloth 52c
 PURE CANE 10 pound paper 52c
 10 pound cloth 53c

E G G S LARGE FRESH
 DE LUXE doz. 26c
 BROOKFIELD doz. 28c
 PROD. OWN doz. 29c

BUTTER FIRST QUALITY
 SILVERBROOK lb. 37c
 CHALLENGE lb. 38c
 DANISH lb. 39c
 SWEET lb. 41c

FLOUR "IONA" 10-lbs. 24 1/2-lbs. 39c 79c
 PILLSBURY 46c \$1.04
 GOLD MEDAL 48c \$1.09

PRICES EFFECTIVE THURSDAY, FRIDAY & SATURDAY
 JUNE 24, 25 & 26 1937.
 WE RESERVE THE RIGHT TO LIMIT QUANTITIES

COLD STREAM PINK SALMON No. 1 tall can **10c**

TILLAMOOK CHEESE lb. **25c**
ASPARAGUS TIPS Del. No. 1 Mon. can **23c**

PINEAPPLE Del. Monte Crushed 3 14-oz. cans **25c**

PINEAPPLE Del. Monte Sliced 2 No. 1 cans **15c**
PICKLE CHIPS Del. Mon. Sweet 3 cans **25c**

CHOCOLATE GHIRARDELLI'S GROUND 1-lb. can **30c**
DUNN'S JELLIES ASSORTED 7-oz. glass quart bottle **10c**
HEINZ VINEGAR CIDER OR WHITE 1-lb. can **15c**
SANKA COFFEE "CAFFEINE REMOVED" 1-lb. can **37c**
PEANUT BUTTER BISHOP'S 1-lb. jar **19c**
CORN FLAKES KELLOGG'S 1-lb. jar **10c**

COCONOG "HEALTHFUL CHOCOLATE FOOD DRINK" 1/2-lb. can **13c**
LUX FLAKES "FOR WASHING FINE FABRICS" 1-lb. can **20c**

DEL MONTE COFFEE REGULAR OR DRIP 1-lb. can **25c**
ASTOR COCKTAILS POPULAR VARIETIES large bottle **65c**

EIGHT O'CLOCK COFFEE WHITE HOUSE 5lb. bag **55c**
EVAPORATED MILK 1-lb. can **6c**

NUTLEY MARGARINE "WHOLE SOME" lb. **14 1/2c**
PINEAPPLE DEL MONTE SLICED No. 2 1/2 can **16c**

CRISCO SHORTENING 5-lb. can **56c**
TOMATO JUICE CAMPBELL'S 50-oz. can **13c**

GRAPE NUTS "BREAKFAST OF MILLIONS" 1-lb. can **15c**
WHITE KING GRANULATED SOAP 1-lb. can **29c**

A&P FOOD STORES

THE WORLD'S LEADING FOOD MERCHANTS

1319 SARTORI AVENUE, TORRANCE