

Eastern Star Chapter Honors Matrons and Patrons With Program



Paris Styles

by MARY FENTRESS

PARIS (U.P.)—It used to be considered smart to wear costumes of a single color, possibly brightened by a small touch of white, but women must wear three or four different colors in the same ensemble to be chic this season.

Colors are vivid and many startling combinations are used for a single ensemble. One house shows a summer suit in shantung with a brightly striped skirt in shades of yellow, orange, bright blue and pale green. It is worn with a short jacket of yellow shantung cut into a deep V front opening to reveal a light orange shantung blouse which is made with a high neckline topped with a small turnover collar and with short cuffed sleeves.

Pale blue pique is used for a short-sleeved tailored jacket worn over a cream-colored blouse with flared skirt of fuchsia-colored pique. The costume is completed with a Breton sailor hat in a roughly woven fuchsia straw trimmed in a pale blue and cream gros-grain ribbon.

Light green linen in a rough, cross-bar weave makes another tailored suit which is worn with a dusty pink crepe blouse. Orange, bright blue and cream are combined in wide bands of chiffon to make an amusing summer dinner dress. The bodice, with a low-cut decollete, is of cream chiffon, the central part of the dress in dull orange, and a 24-inch band of bright blue forms the hem of the flaring skirt. A tight-fitting jacket of double blue chiffon is used for dinner wear.

TODAY'S FASHION TIP

Three and four bright colors are combined for tailored cotton suits, as well as summer evening gowns.

SAVE ON DRY CLEANING

By Using
Piper's
CASH and CARRY PLAN

IMMEDIATE
DEPENDABLE
SERVICE
NO WORRIES
NO DELAYS

**PIPER'S
CLEANERS**

1344 POST PH. 370-J

Mrs. Myers Honors A.L.A. Officers and Chairmen at Luncheon

Officers and chairmen, who for the past year have served under the leadership of Mrs. Myers, president of the American Legion Auxiliary to Bert S. Crossland Post No. 170 were entertained at a prettily appointed luncheon in the Myers home, 1230 Engracia avenue, Saturday.

Covers were placed for Mmes. Fan Wilkes, Hallie Doan, Janet Woodington, Audie Modglin, Elida Buckdull, Mable Williams, Elsie Thompson, Alma Smith, Lillian Barrington, Agnes Babbitt, Velora Murphy, Roxie Sleeth, Maxine Smith, Emma Evans, Sylvia Nelson, Ella Robinson, Lucille Lewellen, Jessie Reeve, Miss Corlita Reeve and the hostess.

The afternoon was spent in filing reports of the year's work and completing copies for mailing to district and department chairmen prior to the American Legion Auxiliary convention, which will be held in Stockton, during the month of August.

AMERICAN LEGION AUXILIARY NEWS

The American Legion Auxiliary to Bert S. Crossland Post No. 170 have invited members of the National Business and Professional club of Torrance and the Woman's club to be guests at their meeting in Legion hall, Tuesday evening, June 22, when they will have as their guest speaker on the subject of "National Defense" Mrs. Bess Stewart of Bell.

Members of the Auxiliary Glee club were entertained at the home of Mrs. J. R. Wilkes, 1931 Gramercy avenue, following their regular practice, Monday evening.

OUR JUNIORS

Members of the Junior Auxiliary to Bert S. Crossland Post No. 170 are learning to strut their stuff in drill team style under the able direction of Alex McPhail, past commander of Bert S. Crossland Post.

CLUB PLANS

The annual National Business and Professional Women's club studio party will be held Monday, June 21, in Mme. Teala Billini's studio at Los Angeles, at 8:00 p. m.

A good program has been planned, games, prizes, eats and what not?

Make reservations with the club president by calling 60. Meet at nurse's home, 1416 Cota avenue, at 6:45 p. m.

DESSERT BRIDGE AT EVANS HOME FRIDAY

Mrs. Emma Evans, 1024 Portola avenue, will open her home to ladies of the Stephen A. Phillips Relief Corps and their friends for a dessert bridge party Friday, June 18, at 12:30 o'clock.

CLUB WOMEN FETE RETIRING PRESIDENT

A delightful affair of Friday was the luncheon and theatre party, with which officers and chairmen of the Torrance Woman's club entertained their retiring president, Mrs. M. J. Beale.

Luncheon was served in the May Company tea room after which the party attended the Paramount theatre.

ADDITIONAL SOCIETY
(Continued on Page 12-B)

Crop Reports Affect Fashions Cotton Inspires New Styles Tip to Toe

Infrequently are women moved to the same frenzies of enthusiasm or despair as their husbands over reports of the day's economic upheavals—even when diagnosed by the ace analysts of the financial pages.

But when the butter-and-egg news is interpreted from the standpoint of fashions—it's time for the girls to pull up their chairs and pay strict attention.

When recent crop reports were released, telling in terms of "lint yields," "per acre bales" and "gross weights" the news of a bumper cotton production, gentlemen figuratively threw their hats in the air—or sank deep in the purple doldrums—depending on whether they were cotton producers or silk manufacturers.

Cotton Is "Tops"

But the ladies were able to maintain a fine air of unconcern while the news sizzled from front pages to crop report columns, hit the stock market sections and financial sheets, and finally ricocheted off the fashion pages. Then it was women's news—and as fresh and new as a frizzy permanent wave.

Inspired by the long and imposing strings of figures—and perhaps by other figures, too—fashion designers translated the staggering sums into styles—and emerged with an inevitable decree—a "cotton season" for mid-late's wardrobe! Sports clothes, from tip to toe—hats in plique and shoes in gabardine; flattery bridesmaids' dresses and filmy wisps of evening gowns; even the most delicately hand-made lingerie—all must be in the "new" cottons.

Entrancingly feminine as such news casually appears—unfledged indeed is he who fails to recognize its economic implications.

Lighter and Gay

So the cycle swings ahead—the whims of fashion projecting themselves into the profit or loss figures—just as economic slumps and highpoints are reflected in women's styles.

Throut business cycles, according to Barron's Financial Weekly, designers and stylists note a definite connection between type of apparel, materials used, colors, and the economic and cultural conditions.

On that basis—and according to prognostications of the wizards who agree the economic curve will continue skyward during 1938, 1939 and 1940 at least—lighter, gayer feminine trappings will brighten this old world in the next three years than have been in evidence for the entire past decade.

ATTEND LUNCHEON AT BEACH HOME

A group of Torrance ladies, who were entertained at lunch-

SUGGESTIONS for Father's Day GIFTS

- ☐ Silk Ties49c
- ☐ Dress Shirts98c
- ☐ Dress Shirts\$1.49
- ☐ Work Shirts49c
- ☐ Work Pants98c
- ☐ Work Gloves49c
- ☐ House Slippers98c
- ☐ Suspenders49c
- ☐ Sport Belts49c
- ☐ Fancy Hose25c
- ☐ Slack Socks25c
- ☐ Shorts & Shirts25c
- ☐ Pocket Hdkfs.19c
- ☐ Dress Pants\$3.98
- ☐ Collar Pins19c
- ☐ Tie Chains25c
- ☐ Traveling Sets\$1.98
- ☐ 25 Razor Blades25c
- ☐ Initialed Hdkfs.25c
- ☐ Polo Shirts59c
- ☐ Straw Hats79c
- ☐ Straw Hats98c
- ☐ Panama Hats\$1.98
- ☐ Sport Caps25c
- ☐ Gladstone Bags\$4.98
- ☐ White Shoes\$2.98
- ☐ Work Shoes\$1.98
- ☐ Work Aprons79c
- ☐ Billfolds49c
- ☐ Billfolds98c
- ☐ 4-Deck Ash Trays98c
- ☐ Fountain Pens98c

Many, Many Items Not Mentioned In This Ad

PENNEY'S
1349 Sartori Ave., Torrance

Calendar

TONIGHT, JUNE 17
7:30 p. m.—Townsend club at Elementary school.

FRIDAY, JUNE 18
12:30 p. m.—Keystone Woman's Club Dessert Bridge.
8:00 p. m.—Loyal Order of Moose.
8:00 p. m.—Masons.

SUNDAY, JUNE 20
Services in all the churches.
7:30 p. m.—Baccalaureate service at Civic Auditorium.

MONDAY, JUNE 21
12:30 p. m.—Betsy Ross Star Club.
6:15 p. m.—Kiwanis at Daniels cafe.
7:30 p. m.—N. B. P. W. at Mme. Billini's Los Angeles studio.

TUESDAY, JUNE 22
7:30 p. m.—Boy Scout Troop No. 211.
7:45 p. m.—American Legion Auxiliary.
7:45 p. m.—City Council.
7:45 p. m.—Royal Neighbors.
8:00 p. m.—Odd Fellows.

WEDNESDAY, JUNE 23
1:30 p. m.—St. Cecilia Guild.
7:30 p. m.—20-30 Club at Daniels cafe.
7:30 p. m.—Boy Scout Troop No. 218.
7:45 p. m.—Rebekahs.
8:00 p. m.—A. O. U. W.
8:00 p. m.—V. F. W. at Loma hall.

THURSDAY, JUNE 24
6:30 p. m.—Rotary at Legion hall.
7:30 p. m.—Boy Scout Troop No. 217.
7:30 p. m.—Boy Scout Troop No. 219.
7:30 p. m.—Townsend club.
7:30 p. m.—O. E. S.
8:00 p. m.—T. H. S. Graduation in Civic Auditorium.
8:00 p. m.—Modern Woodmen.

con. Wednesday by Mrs. Pearl Sloppy at her home in Seal Beach were Mmes. Emma Evans, Jess Sprout, Annie Woodbourne, Elizabeth Hough, J. W. Post, Jack Williams, Eliza Stewart, Fred Boice, Katherine Klusman and Cassie Nourse.

SAVINGS FOR YOU AND YOUR FAMILY DURING THESE THREE THRIFTY DAYS!!!



Deep, Full Ruffles!
PRISCILLAS
Ea. pr. 56 in. wide, 2 1/6 yd. long.
59¢ pr.
Pretty Priscillas a-plenty! Of good-looking MARQUETTE—with colored dots and figures!



Plaid Blankets
Indian Designs!
Here's that extra blanket! Heavy! Warm! It'll take hard wear! Size 70"x80".
1.98 ea.

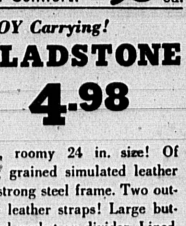


PILLOWS
A Value in Comfort!
98¢ ea.



A Bag You'll ENJOY Carrying!
GLADSTONE
4.98
Big, roomy 24 in. size! Of stag grained simulated leather on strong steel frame. Two outside leather straps! Large buttoned pocket on divider. Lined.

Good-looking! Streamlined Steel
SUIT CASE
2.98
Large, roomy 28 inch size! Baked enamel finish with contrasting center stripe, rounded edges and bright nickled hardware. Strong wooden frame!



100 GREATLY REDUCED
SILK DRESSES
49¢ to \$2.44

PENNEY'S
J. C. PENNEY COMPANY, Incorporated
1269 SARTORI AVENUE, TORRANCE

Affair Follows Timely Theme With Carrie Parks Conducting

Graduation was the theme chosen for the meeting in the Masonic temple Thursday evening when the Torrance chapter, Order of Eastern Star, honored past worthy matrons and past worthy patrons. At the meeting chairs were filled by the honored ones. Carrie Parks, as worthy matron, conducted the meeting.

Archer Lewis served as worthy patron. A delightful program, presented under the direction of Maxine Smith, included a playlet, "The Fatal Quest," and music by a male quartet. Characters in the playlet were Mrs. Jennie Moore as the king, Helene Miller, queen; Theresa Hill, duke; Lois Babcock, princess; Frances Buckley, curtain, and Billy Kerber, scene shifter. Mrs. Dorothy Prince was the reader. In the male quartet, Richard Hogue, Kenneth Fasnacht, Fred Leming and Gene Delson, Kathrynne Buffington directed the four, some and accompanied them at the piano. They sang schoolyard numbers and several negro spirituals.

The group then marched into the banquet hall where Minnie Brooks had decorated the tables with miniature graduates and miniature replica diplomas served

DETROIT VISITOR LEAVES FOR HOME

Ferris D. Stone, of Detroit, Michigan, Mrs. Edna Stone and son Joe, 1333 El Prado, visited cousin Mr. and Mrs. Tom Blair, Sunday. They went from there to Little Rock near Palmdale and called on Mr. and Mrs. Alfred Jackman. Mr. Stone, who has been stopping for a short time at the Biltmore Hotel, Los Angeles, left later for his eastern home.

FOR SPECIAL BARGAINS

On Lots and Re-possessed Homes
SEE REMCO
1315 Post Ave. Tel. 5

ciate matron to Estelle Graham this year.

ALCORN'S

ON TORRANCE BLVD.

FATHER'S DAY

JUNE 20

WHY NOT A SHAVING SET OR BILLFOLD, PIPE, CIGARS OR CIGARETTES?

Father's Day Cards

GOES ON SALE

Thursday, Friday and SATURDAY

Penney's have prepared for one of the biggest seasons of the year with mammoth purchases of new vacation needs, gifts for school graduates, gifts for the June Bride and don't forget—FATHER'S DAY IS NEXT SUNDAY!



Smart-Alls

89¢

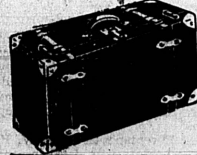
- Good-looking TWILLS
- Hollywood DENIMS!
- Sizes 4 to 16!

They'll keep that neat-as-a-pin look all day long in a pair of these happy-go-lucky slacks! Sailor front and side openings—striped legs—patch pockets! And, of course, lots of nautical trimmings. Long wearing—they'll stand lots of tubbings!

There's Plenty of Room in This

SUIT CASE

1.29

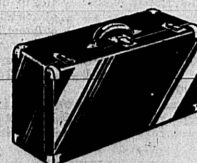


Waterproof grained fibre over a strong wooden frame! Reinforced with two leather straps all around. Protective steel corners and locks. 26 in. size.

Fine for Automobile Trips!

METAL SUIT CASE

1.98



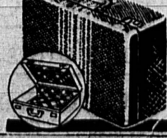
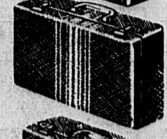
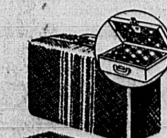
Durable enough to carry on the running board! Light enough to carry by hand! Baked enamel finish on steel with bright nickled hardware.

Sensational Values in

SPORT LUGGAGE

98¢ ea.

- 15" Week-end Case
- 21" Week-end Case



They look far more expensive! Strongly constructed with full wooden frame—covered with neat tweed-like material. Attractive lining and roomy inside pockets. Polished locks and leather post-type handles.

Pillow CASES
13¢ ea.
Belle Isle quality for everyday wear! Regulation size, 42 by 36 in.

Handkerchiefs
For Men **3 for 10¢**
Snowy white cotton with hemstitched hem. 17"/17"

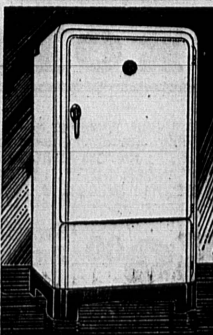
You Save CONTINUALLY Because It Operates SILENTLY!

ELECTROLUX



HAS NO MOVING PARTS

This is the refrigerator that a million happy families say is the biggest money-saver of them all. Be sure to note its extra spaciousness, its wealth of time and labor saving features, its smart modern beauty. But EVEN MORE important are the advantages you cannot see... advantages which result from the silent, different operation of Servel Electrolux. A tiny gas flame takes the place of all moving, wearing parts. This assures longer, more satisfying service... worthwhile savings year after year.



Torrance Plumbing Co.
1418 Marcelina Avenue Phone 60
F. L. PARKS, Proprietor Opposite Post Office

NEW Air-Cooled
ELECTROLUX
THE SERVEL Gas REFRIGERATOR