

City Partially Reimbursed for Land Suit

City Clerk A. H. Bartlett informed the city council Tuesday night that he had received a state warrant for \$806.64 toward the payment from the city's quarter-cent gasoline tax allocation. This money, he said, will reimburse the city for the acquisition and settlement of the Demuth condemnation suit for land needed to complete street improvements in the vicinity of Waverly. The sum of \$1,180.80 is still due the city and when received will be credited to the general fund, according to City Engineer Frank R. Leonard.

New X-Ray Demonstration
ST. LOUIS (U.P.)—A laminagraph, a device to take accurate X-ray "picture slices" of body tissue at any depth, was demonstrated for the first time here.

Yours Can Be a Beautiful Home—Use Premier and Murphy Paints, Varnishes They Go Farther—Last Longer.

1937 Patterns Mayflower Wall Paper.

Renew Your Floors



Modern Floor Sander For Rent

Torrance Paint Store
SARTORI & POST
Phone 884

Gardening for Fragrance



Gardeners all over the land are rediscovering the charm of fragrance.

The old-fashioned tobacco which suffered a lapse of popularity for many years because it was too often used as a funeral flower, is returning to favor in gardens, being no longer used in funerals. Its odor, too heavy for the taste of many for indoor use, is delightful when diffused on the evening air. A few bulbs planted along the garden path will be delightfully evident on summer evenings.

One of the most fragrant evening flowers is the night scented stock. A somewhat straggly, lilac-flowered plant, not too attractive in the daylight, it emits in the evening, or after a daylight shower, a cloud of sweetness.

The sweet scented tobacco, nicotiana alba, is surpassed by none in delightful fragrance. Its long tubular flowers close in midday, but open as evening approaches and give forth their rich perfume. Sweet Rocket, a hardy perennial which grows easily from seed, is a most fragrant flower.

Evening primroses, oenotheras, are native American flowers of notable evening fragrance.

Read Our Want Ads!

Obscure Firm Has National Prestige With Unique Saw

(Continued from Page 1-C)
make their diamond-impregnated saw blades from a special alloy steel. It is this blade that telescopes an ordinary three-hour tile cutting job into 15 minutes.

At the present time they are turning out about 25 Di-Met saw units monthly. But they are months behind in design and production, so fast has the product taken hold in the industries where it has proved a boon. The Felkers are now turning to optical prism work, using their own design of a saw calibrated to thousands of an inch for this highly technical field.

Aid In Grinding Huge Lens
An optical company making an intricate prism for M. G. M. studios, where the glass will be used in the production of color movies of a new type, has found the Felker saw will save \$50 on each prism's manufacture. Cal Tech is using a Felker machine to cut the glass blocks used in the grinding of the 200-inch telescope lens that is to be mounted at Palomar mountain in San Diego county.

A payroll of \$175 weekly is being contributed to the economic life of Torrance by Felkers, father and son. They employ, in addition to their own services, a metal worker and three high school students. The milling and shaping of the portable Di-Met saw base is done in a Bell foundry.

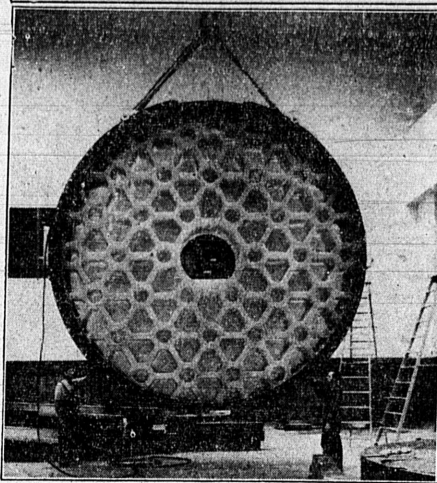
INTEND TO WED

Notices of intention to marry were filed this week by the following local residents:

Steve Schmidt, 27, 1743 Sartori, and Marie C. Carlin, 23, also of Torrance.

Kristi Palica, 21, of 24921 Walnut street, Lomita, and Frances Billrey, 18, of Venice.

Giant "Eye" To Reveal Wonders of the Universe



Enormous proportions of world's largest (200-inch) telescope mirror are indicated by this picture. Size of the glass disc is shown in sharp contrast with height of men who are grasping the sling used to move it into position. The photo, furnished by General Petroleum, shows bottom view, where one sees the wafer-like openings into which the foundation posts will be set.

Has man yet penetrated the extreme limits of the universe? After all, what a mere pigmy is man, and yet how big in achievement?

These are thoughts which occur to one while viewing the huge 200-inch "eye" now being ground in preparation for the erection of the world's largest telescope atop Mount Palomar.

The monster glass mirror must be so ground that each point on its concave surface will be accurate to the millionth of an inch, thus perfectly mirroring the marvels of the heavens. It may bring the moon within an apparent distance of 25 miles of the earth.

So exacting must be this work—already in progress for many months—that no one can tell when it will be finished. However, 1940 is the anticipated year of completion of the circle disk, with twice the diameter and four times the area of any now in use.

Rest and Ride In Oil
The top of Mount Palomar—but a grain field a year ago—has been changed to a bustling industrial center making ready for the placing of this largest telescope. Says information reaching William C. Campbell, Torrance wholesale agent for General Petroleum Corporation: "A Butane gas plant, water plant with a million gallon reservoir and an electrical power plant have been developed."

"The electrical plant consists of two diesel motors of 75-kilowatt capacity each, operated on General diesel fuel oil. Mobil gas-powered and Mobil-lubricated trucks handle the camp hauling, while grading is done by a General diesel-fueled and Mobil-lubricated tractor. Buildings to date consist of guest house, several cottages for the workers, and the steel superstructure for the telescope dome, now up to the observation floor. A new 12-mile road from the Rincon highway to the site has been practically completed, and a radio telephone service installed for direct communication with 'Caltech' institute engineers."

"An interesting feature in connection with the installation is that the total moving telescope structure—weighing 800,000 pounds—will rest and ride on a film of oil, pumped into metal shoes under high pressure. Thus this really stupendous project has again been demonstrated the fact that science and industry of this progressive age absolutely depend on highly-refined petroleum products for achievement of their high aims."

New Garbage Law Adopted

Read for the second time, the amending ordinance No. 293 regarding garbage removal was passed by the city council Tuesday night. This measure gives the city exclusive right to transport waste matter thru the city and by its terms forbidding private transportation of garbage within the city limits bans feeding of garbage to hogs in Torrance.

Infraction of the new law will be considered a misdemeanor and the maximum penalty will be a \$500 fine, six months in jail, or both.

Recreation Group Honors Mothers

A gala party honoring all mothers was held at the Recreation center on Border avenue last Thursday afternoon. Members of the Sunshine club presented each mother attending with a boutonniere and furnished flowers that were given to the honored guests present. The program was presented by a group of talented children, among them, Louise Thompson, Mary Bray and Elsa Standley.

No 5-Cent Shines
PORTLAND, Ore. (U.P.)—The 5-cent shoe shine has had its day, officials of the bootblack union announced.

tion with 'Caltech' institute engineers. "An interesting feature in connection with the installation is that the total moving telescope structure—weighing 800,000 pounds—will rest and ride on a film of oil, pumped into metal shoes under high pressure. Thus this really stupendous project has again been demonstrated the fact that science and industry of this progressive age absolutely depend on highly-refined petroleum products for achievement of their high aims."

IN SOCIETY

AUXILIARY BAKE SALE SATURDAY

At the entrance to the Sam Levy store Saturday morning, May 15, the American Legion Auxiliary to Bert S. Crossland Post 170 will conduct a bake sale. They will offer cakes, pies, cookies, salads and candies at moderate prices.

Committee in charge of sale are as follows: Ethel Sears, Lucille Lewellen, Fan Wilkes, Bess Myers and Maxine Smith.

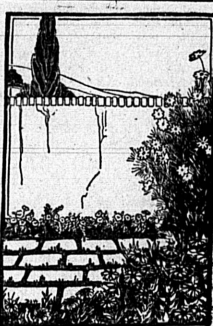
M. E. LADIES PLAN DINNER FOR JUNE 3

Ladies of First Methodist church, announcing another of their famous home cooked dinners for Thursday evening, June 3. The public is invited and may secure tickets from Ladies of the church.

DISTRICT DEPUTY AT O. E. S. TONIGHT

Pearl Monroe, district deputy grand matron of the California Order of Eastern Star will pay her official visit to Torrance chapter this evening. Officers request all members to attend. Meeting at 7:30 p. m.

Annual Flowers Make Best Bouquets



A Generous Planting of Annuals.

The small gardener who has an overabundance of cutting material in his flower bed is a rarity.

This is one instance, at least, where the old adage, "Your mouth is bigger than your stomach," does not apply, for most people plant too few flowers for cutting purposes, and although they swear they will plant twice as many when the time actually comes they haven't enough.

Annuals are way out and above the other flowers for this purpose. For brilliancy of color, variety, ease of culture and certainty, they are unrivaled. Besides this they have a season beginning on July 1 which lasts until the frosts. They use applies to every garden, and especially to the renter who does not care to put in an expensive display, but who wishes his full measure of summer blossoms during the season at hand.

A few sure-fire growers: Sweet alyssum and ageratum as edging plants, calendulas, excholtzias or California poppies, marigolds, nasturtiums, annual galliardias, petunias, scabiosa, if seed are kept picked; salvias, ten-weeks' stock, verbenas and zinnias.

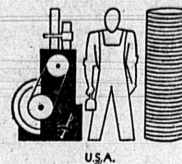
Any of these may be planted in beds, or the border. They show up well in a single color, mixed or in a selected variety of color. If sown around the first of May, you will have blooms by the first of the following month, which will increase as the season progresses.

Police Rout Starlings
MANSFIELD, O. (U.P.)—War was declared for a short time here when droves of troublesome starlings besieged the town.

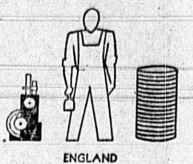
Auto Shears 16 Fenceposts
JOHNSTOWN, Pa. (U.P.)—An automobile driven by George Gritzer sideswiped a truck, and sheared off 16 fenceposts and seven small trees.

Divorce Petition Terse
ELYRIA, O. (U.P.)—John Babes' petition for divorce from his wife, Mildred, is one of the shortest on record. In three short paragraphs he makes his only charge: that she "nags and makes life unbearable."

MORE POWER TO AMERICA



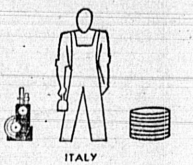
U.S.A.



ENGLAND



GERMANY



ITALY

The American Industrial Worker Uses Most Machinery and His Real Wages Are In Proportion.

AMERICAN WORKER LEADS WORLD IN MACHINES USED AND WAGE EARNED

American factory workers lead the world in the amount of machinery they use and wages they earn, according to statistics submitted by all the leading industrial nations to the International Labor Office at Geneva, Switzerland.

The average industrial worker in the United States has 4.86 horsepower at his command whereas the average industrial worker of Germany has 2.6, the British worker 2.56, and the Italian 2.14, according to the Machinery Institute which has recently completed a study of the census reports of the various nations. Real wages—the purchasing power of the wage earner's income—are highest where horsepower of equipment used is highest, the Institute found.

Power, Wages Proportionate
"The British worker uses 53 percent as much industrial machinery and his real wages amount to 53 percent of those earned by the American," the Institute report stated. "The German worker uses 54 percent as much machinery as the American and earns 38 percent as much in real wages, and the Italian uses 44 percent as much machinery and earns 21 percent as much in real wages."

"The relatively advantageous position of the American is due partly to a greater capacity to produce goods by American industrial methods and partly to lower prices also resulting from efficient American industrial methods."

"Altho it is impossible to make absolute comparisons of living standards in various countries due to differences in cli-

mate, customs and tastes, the figures on real wages may be considered as indicative of relative standards of living in various countries."

Cite Food Study
"An independent study of purchasing power of wages in terms of 23 food items based on statistics from the International Labor Office shows that the American worker has a 100 percent advantage over the worker in Great Britain, about a 200 percent advantage over the worker in Germany, and about a 300 percent advantage over the worker in Italy. The study was based on the average consumption of such items as bread, butter, beef, pork, potatoes, sugar, milk and eggs of 100 American families of two adults and three children each."

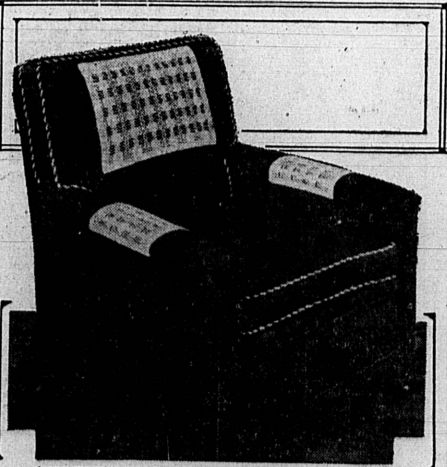
Following are index numbers showing the amounts of these foods one hour's wages would purchase in ten countries:

United States	100
Sweden	63.4
Denmark	61.57
Switzerland	56.57
Holland	54.21
Norway	52.89
Great Britain	50
France	37.89
Germany	33.42
Italy	25.25

In every country upon which figures of industrial mechanization are available there is a close relationship with real wages, the Institute found.

Boy, 14, Wizard at Figures
FORT WORTH, Tex. (U.P.)—William Souder, 14, is a human adding machine. In a public test, he added a column of 10 three-digit figures in 13 seconds.

REST FOR THE WEARY HEAD



PRACTICAL as it is charming, this chair set will be a boon to tired heads, and will keep your furniture at its best. It is crocheted in a geometric pattern, of knitting and crochet cotton, and you can wash it. Directions may be obtained by sending a stamped, self-addressed envelope to The Crochet Bureau, 522 Fifth Avenue, New York City. Specify Modern Chair Set #7023.

100 Points Coupon

THE TORRANCE HERALD BONUS CHECK CAMPAIGN

I hereby cast 100 POINTS to the credit of

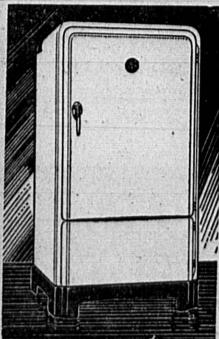
Miss, Mr. or Mrs.

Address

This coupon, neatly clipped out, name and address of worker filled in, mailed or delivered to the Torrance Herald, will count as 100 POINTS. It does not cost you anything to cast these coupons for your favorite worker and you are not restricted in any sense in giving them. Get all you can and send them in—they all count.

Do not Roll or Fold. Deliver in Flat Package. NOTE—This Coupon must be voted on or before May 15th.

BEFORE YOU BUY
Any Refrigerator
Investigate the
DEPENDABILITY,
Economy, Beauty,
And All Around
Superiority Of...
ELECTROLUX



ONLY
\$5.00 Down
DELIVERS

USES NO WATER
NEW Air-Cooled
ELECTROLUX
THE SERVING REFRIGERATOR

NOW YOU CAN
BUY AN
ELECTROLUX
AND A MODERN
GAS RANGE
FOR THE ONE
COST OF ONLY
\$4.87
PER MONTH

National Home Appliance Co.

HARRY M. ABRAMSON—"Friendly Credit"

New Location—1312 Sartori Ave., Torrance Phone 78

A. M. GAMBY Mortuary

A. M. Gamby, director. Lady assistant.
25001 Narbonne Phone Lomita 612



FRED HARDER'S GENERAL PETROLEUM SERVICE STATION

Now Operates On
UNION HOURS
and
UNION WAGES

In line with the times, we are establishing a 48 hour week with minimum Union wages. Your continued patronage is needed to make these better working conditions possible.

Thank You.

FRED HARDER.

Post and Sartori

Phone 766