

Columbia Steel Company's

ROLLING MILL WAREHOUSE EMPLOYEES

Group Pictures Appearing in This Month's "Steel Blade," Employee Publication



Front row: Frank Diehope, Eugene Gamm, John Speakman, Frank Stears, Garland Johnson, Bob McGee, James Boyd. Back row: Charles Clayton, Russell Knapp, George Haworth, Harvey Crum, Willie Agapito, Guy Shields, Frank Lowery, Earnie Mauk.



Front row: John Parker, Spud Webster, Raymond Rogers, Ray Dean. Next row: Bill Taylor, Fred Wondall, Augustine Tapia, Paul Silvis, Wm. Stullenberger, Donald Philpott, Frank Sweeney, Jack Foster, Nestor Flores. Next row: Clyde Shriner, Fred Miller, Fred Bays, Kenny Molstrom, Al Snyder, Joe Venable, Homer Sutliff, Al Richardson, Fred Cramer.



Front row: Frank Schmidt, Thomas Pugmire, Carl McBride, Jimmy Woringer. Back row: Frank Newman, Bob Sheli, Florand Dilsigne, Lee Heckerson, Lee Gaines, Adolph Davis, John McMullen, Wm. Loughran, Paul McMullan, Cecil Shugg.

Flipping The Herald
Files Backward

Thirteen, Ten,
Five and One
Year Ago

1924—Thirteen Years Ago
Candidates for city council were: Willis M. Brooks, Charles Elman, R. R. Smith, George R. Steadman, Lee R. Taylor, John S. Torrance, Robert J. Deininger and W. T. Klusman.

Progressive club plans big rally, torchlight procession headed by G. A. R. File and Drum corps of Long Beach in uniform, at Legion hall to arouse interest in club's councilman ticket.

Dr. George P. Shidner was admitted to membership in the Chamber of Commerce. Efforts being made to obtain a downtown Western Union office.

1927—Ten Years Ago
Home-building during March sets new record as 30 permits issued for work costing \$124,388.

Establishing a new high for Cravens avenue frontage, south-east corner—65 feet on Cravens and 130 feet on El Prado—sells for \$15,000.

Wallace Post elected president of Rotary club, succeeds Carl Hyde.

Girl Scouts, led by Miss Volney Henderson, hike to Redondo Beach.

Water company moves offices to new building on Cravens avenue.

Mrs. John Salm and daughter Ruth sail for missionary work in Japan.

1932—Five Years Ago
D. & M. Machine Works begins manufacturing garden hose.

Firemen-hosts to 61 at turkey dinner at fire station.

Lendel Elder wins Constitution oratorical contest at high school.

Men's Bible class holds barbecue and program at city baseball park, corner Carson and Border avenue.

Torrance Military Academy cadets start baseball practice for extensive season planned by Col. Ingersoll.

Miss Essa Palmer entertains

younger set at bridge party in her home on Sartori avenue.

Mrs. Lois Strasser resumes kindergarten instruction work at Elementary school following illness.

1936—One Year Ago
Four favorites in councilman race are W. H. Tolson (incumbent), Frank Perkin, Carl E. Marsteller and Tom F. McGuire, according to local political quidnuncs.

A. C. Stamps starts construction of five-room home on Sherer avenue.

Curtis Paving company held low bidder on \$2,100 Cabrillo paving job.

J. C. Smith, veteran realtor, reports \$30,000 in realty sales during 10-day period.

Torrance Tire Service opens tire-treading shop on Cravens avenue.

Columbia Steel's foundry baseball team feted at Hollywood Riviera after winning winter baseball championship.

STATE PICNICS
ILLINOIS . . . The annual winter picnic under auspices of the Illinois association will be held all day Saturday, April 17, in Sycamore Grove Park. Each one of the 102 counties will establish its own headquarters and will open registers. A program of music and addresses will follow the basket dinner hour.

THREE MONTHS ADDED WEAR
Figuring conservatively, you can have your most worn-out pair of shoes half-soled and repaired by us and get at least three months of additional service out of them—and they will look well, too.

KENNEL'S
Master Shoe Rebuilding
1917 Carson at Cabrillo
"Shoes rebuilt to look like new and Wear Better."

Frespuero
Artesian Water

Phone
Torrance 621W

Gardena, Phone 1981

Miss Essa Palmer entertains

TORRANCE HIGH
LIGHTS . . . by

Alice Taylor & Dorothy Elder

Strutting Seniors . . . Monday morning found the seniors strutting around the campus in their new chocolate brown corduroy jackets with brown and white emblems. They arrived Friday evening. This idea of having jackets is original as all other senior classes have had sweaters.

Friendship Talks . . . The juniors and seniors were excused from their classes last Thursday to the study hall to attend a symposium on World Friendship. Five student speakers from Washington high school and two from Torrance gave in interesting talks. The speakers from Torrance were Jean Streitweiser and Lorraine Hill.

Ball Casualty . . . Everyone was glad to see Clem Maupin back at school after spraining his ankle. This occurred last week at a practice baseball game with Narbonne.

President Resigns . . . The Torrance Forum held its monthly meeting Monday night. Margaret Hogue, president, offered her resignation because of holding too many offices, and Johnny McDonald was moved up to president. Dorothy Elder was elected the new vice-president. Laura May Hyde gave an interesting talk on her recent trip to Washington. Refreshments followed.

Playday Enjoyed . . . At the playday at Gardena high school April 7, the G. A. A. girls had a fine time. We can't say they came out victorious because there was no one school competing against another. It enabled everyone to become acquainted, and there were no ill feelings for losing in any game. The Torrance girls had their new red shorts for this playday and they certainly made striking outfits with their new G. A. A. sweaters. After the games there was a splendid program, and refreshments followed.

Sixth On List . . . In a percentage of attendance sent out by the board of education, Tor-

Hawaii Bound



Mrs. Van Cott Niven, the former Lucy Estelle (Dicky Dell) Doherty, of the famous oil family, swings along the dock at San Pedro preparatory to boarding ship for a honeymoon trip with her new husband to Hawaii.

rance was sixth on the list of 24 schools. Some schools had an attendance average as low as 70.85 percent while Torrance had an average of 94.73 percent.

See Art Exhibit . . . Several students from the art classes attended the Gardena art exhibit Wednesday. Everyone agreed that the paintings were very fine.

ON SURPRISE VISIT
Mr. and Mrs. Willis M. Brooks were pleasantly surprised this week when their son Phillips arrived from Stanford University for a brief visit. Another son, Comet Brooks, recently arrived from New York University to spend his vacation at home.

W. I. Laughon, M.D.
Physician & Surgeon
Offices: Phone 31
1837 El Prado Day or Night
Across from Herald Bldg.

Listen! . . .



But You
Will Hear

NOTHING!

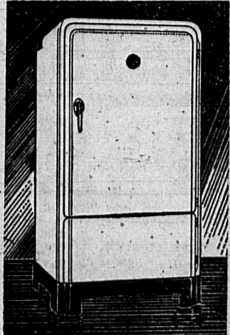
ELECTROLUX

Uses a Tiny Gas Flame, which is SILENT. There are no moving parts to wear, which is the secret of its long life and economy of operation.

ONLY
ELECTROLUX
Gives You All
These Advantages:

- FREEDOM FROM NOISE
- NO MOVING PARTS TO WEAR
- LASTING EFFICIENCY
- LOW OPERATING COST
- FULLEST FOOD PROTECTION
- SAVINGS THAT PAY FOR IT

Besides . . .
Every Modern Convenience
Streamlined Beauty
Extra Roominess
Greater Ice Cube Capacity



NEW Air-Cooled
ELECTROLUX
THE SERVAL Gas REFRIGERATOR
EASY TERMS
PAY AS YOU SAVE

Torrance Plumbing Co.

F. L. PARKS, Proprietor Opposite Post Office
1418 Marcelina Avenue Phone 60

WIN A MAGIC CHEF GAS RANGE

10 regular \$140.50 modern MAGIC CHEF gas ranges are being given away ABSOLUTELY FREE for the best statements on "Why I Prefer a Magic Chef Gas Range with a Swing-Out Broiler." Full details are given on the radio program "Easy Home Decoration" featuring KATHERINE MUSEL WHITE, nationally known interior decorator, writer and lecturer. G. M. "MIDAY" on radio station KTLA 9 a.m.

GET YOUR ENTRY BLANKS AT OUR STORE—NOTHING TO BUY
TORRANCE PLUMBING CO., 1418 Marcelina.

H.S. Principal Tells Views About
Teacher Transfers to Other Schools

"Before I approve of any transfers from the high school faculty to other schools in the Los Angeles district I want to be assured that the new teachers will be capable, experienced and just as efficient as the teacher who wants to enter another school."

So declared Principal Thomas Elson of the high school this week in discussing this matter of "transfers" which has become a major point of interest among instructors because of the fact that about seven new high and junior-high schools are scheduled to open in the Los Angeles district next fall.

Contrary to some reports here,

Principal Elson expects that only about four transfers will be allowed from the local high school. Two of these have already been made—Raymond J. Casey to Poly high school and Coach Bernard J. Donahue to Hamilton high school.

May 1 is Deadline
As yet no permanent selection has been made of a shop instructor to fill Casey's place. Donahue's post was assumed two weeks ago by Roy Cochran, formerly of Hamilton. Principal Elson is still in quest of a teacher to take Casey's position which is now being held by Oscar Trygg.

Although the local school head

anticipates but two other transfers, some Los Angeles high schools will see as many as seven instructors taking positions in the new institutions opening this fall.

"I believe that we are building a progressive educational force in Torrance and I don't look for a wholesale shift in teachers here," Elson said. "I would not like to see any of our faculty leave but if one or two more desire transfers—and the deadline for such requests is May 1—then I intend to see that the instructors who take their places are fully as capable and seasoned as the ones we have."

C. M. T. C. DATA HERE
Full information about enrollment in the Civilian's Military Training Camps in California this summer may be obtained from L. J. Gilmer, secretary of the Chamber of Commerce.

RB CUT RATE
DRUG STORE

1316 Sartori, Torrance (Across from Woolworth's) Ph. 731

EVERY DAY . . EVERY WEEK . . EVERY MONTH
The RB SELLS for LESS!

DENTIFRICE

Med.—Tooth Powder 35c
DR. LYONS

Lge.—Tooth Paste 32c
BOST

Lge.—Tooth Paste 39c
IPANA

Lge.—Tooth Paste 67c
FASTEETH

Reg.—Paste or Powder, PHILLIP'S 18c

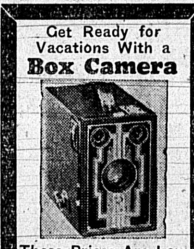
Lge.—Plate Cleaner 40c
POLIDENT

Lge.—Tooth Powder 67c
PYCOPE

CHECK THESE

PRICES AND
SAVE!

Get Ready for
Vacations With a
Box Camera



These Prices Are Low
Size 116 \$1.39
Size 120 98c

SALVES-OINTMENTS

Lge. Size BAUME BENQUE 50c

Lge. Tube—Ointment 67c
CALMITOL

For Skin Trouble CUTICURA 20c

Sml. Size—Ointment 20c
HYDROSOL

For Ringworm of Feet—TRYCO 89c

Small Size K. Y. JELLY 21c

1-Oz.—Ointment 38c
IODEX

Men—YOU NEED
These for Summer
Athletic
Supporters



Bauer and Black 33c

Yeast-foam Tablets 34c

Lydia Pinkham's Vegetable Compound Mfg's. Reg. \$1.50 Size \$1

Liquid or Tablets

PILLS-TABLETS

Groves—Laxative BROMO QUININE 24c

100 Aspirin Tablets 59c
BAYER'S

100 Pills LEPACTIC 35c

God Liver Oil MCCOY'S Tablets 40c

Small—Laxative N-R TABLETS 17c

10 Tablets PYRAMIDON 23c

For Pains—Tablets 34c
MIDOL

Carter's Little Liver Pills

Small 17c
Large 50c

WELCH'S GRAPE JUICE

IRENE RICH says "Keeps Energy Up—Weight Down—Don't Be Fat"

Pt., 20c Qt., 39c

VAN'S White Shoe Cleaner

New Lg. Size 23c

PATENTS

Pint Size NUJOL 67c

For Kidneys DOANS PILLS 50c

Small Size ZEMO LIQUID 24c

With Cod Liver Oil MALTINE \$1

Reg. Size RECLIN 50c

LADY ESTHER Face Powder

All Shades 37c

Lady Esther 4-PURPOSE CREAM

Sml., 37c; Med., 55c

Lge. 92c