

House Should be Constructed to Suit Owner's Entertainment Requirements

Relative Use of Rooms Must be Given Attention

The amount of entertaining to be done by a family is of prime importance when the purchase or building of a new home is under consideration. The relative use to which living, dining, and bedrooms are to be put must be thought over by the prospective purchaser.

The current trend in small houses is to do away with the dining room. In some instances junior dinettes are substituted, while in others a corner of the living room is devoted to a table and chairs suitable for dining purposes. The hostess who entertains frequently, however, will want a sizeable dining room and a large living room.

A room in which people are to be assembled frequently should have comfortable seating arrangements, but should not be overcrowded with furniture. Conversational groups should be considered when grouping the furniture.

A living room planned for entertaining had ivory woodwork, deeper ivory walls, and a beige carpet. The draperies had a neutral background, with accents of mulberry and Chinese blue. A divan was upholstered in mulberry, one chair in blue, and a love seat was done in gold. Other furnishings followed these key pieces.

Mortgages for the construction of new homes, the purchase of existing ones, or the refinancing of homes are insured by the FHA. Private financial institutions, approved as mortgagees, extend the funds. Monthly rentlike payments include amortization of the principal and a portion of taxes, interest, and service charge.

Things-to-See at The Herald's Home Project

(Continued from Page 3-B) is another opening to the garage.

This, visitors, is for the family dog.

Attractive Combination

Now from the street look at the roof, its dust-white color harmonizing nicely with the sturdy red of the brick, the natural cream of the stucco and the yellow trimming.

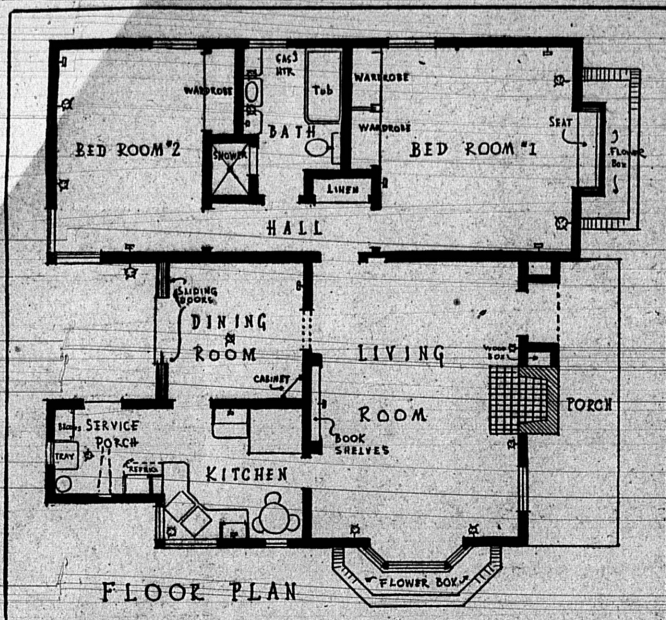
Notice the combination of shingle roof, wood, stucco, painted galvanized iron over the bay windows and the wood paneling around the base of the home give the whole a unified appearance.

Thus the Demonstration Home gives free but carefully balanced colors a chance to exercise their charm; provides a setting rarely equalled in a home of similar size or cost and encompasses many features formerly found only in much higher-priced residences.

TOY DRAWER IN CLOSET HELPS CHILD, MOTHER

A deep drawer on rollers at the bottom of a child's closet is a great convenience to the mother and is an effective answer to the usual excuse that he can't pick up his toys as he has no place to put them. There can be a step covering the front of the drawer and hinged so that it can be raised when he wants to get at toys beneath it. This will enable him to pull out the drawer part way and step up to reach his clothes on the hooks above.

CONTAINS THREE ESSENTIAL FACTORS



It was from this outline of floor space that The Herald's Demonstration home was founded. The basic consideration—after the cost of the home is determined—of any construction project is a floor plan. Before you visit the Demonstration Home note the arrangement of the rooms above, see how the entrances are arranged for a minimum of steps, observe the

kitchen design—always a vital point—and mark the window arrangements.

Three essential points were desired by The Herald in its home-building project: compactness, convenience and comfort. The result, which is open for your inspection beginning Saturday afternoon at 1 o'clock, is believed to have attained those factors.

Dining Alcove Set Apart by Novel Method

The modern trend toward combined living-dining rooms adds another problem to the matter of interior decorating. Some housewives are not content merely to set up a bridge table for the evening meal.

One room had a chair rail around the wall. Book cases, the same height, were built out into the room, setting off one portion as a dining alcove. This arrangement can take the place of the dining alcove, popular in present-day construction.

Color of Walls REFLECTS LIGHT In Court Rooms

Bedrooms, dining, or living rooms adjacent to inner courts or "wells" of large apartment buildings sometimes lack sufficient daylight.

The amount of light that can be reflected into the rooms may be increased by applying paints in light-tinted colors to the walls of the court.

White reflects the greatest amount of light, soft yellow imparts a sunshiny effect, while shell pink lends a rosy glow, and pale green gives the impression of coolness.

WAX BRICK
Interior brick floors should be waxed or oiled to keep them from dusting.

Vital Point

Color plays an important part in the appeal of The Herald's Demonstration Home that will be opened to the public Saturday afternoon, 1 o'clock, at the corner of Beech and Sierra streets.

The choice of decoration was one of the most carefully considered factors in the project that was designed to show what can be done in Torrance, by Torrance firms, for Torrance people. The open-house period will close Sunday night, Mar. 14.

The Torrance Herald's DEMONSTRATION HOME

Will Be Supplied With

FLOWERS

harriett leech

Saturday, March 6, Thru Tuesday, March 9

1413 MARCELINA
Phone 12

Lumber Records Smashed

Harbor Imports Rushed to Keep Pace With S. C. Building Boom

Lumber import records of all time were shattered at the harbor during the past week. Lumber schooners, operating on the fastest schedule in history, brought 29,177,000 feet of lumber into the port for Southern California's depleted lumber yards. The record for the week exceeded by more than 4,000,000 the previous record of 25,168,000 feet established during the week ending Feb. 22, 1936, according to officials of the Marine exchange. The week exceeded that of the previous seven-day period by nearly 10,000,000 feet.

Typical of the rush to supply harbor terminals with stocks to keep the Southland's building boom at full speed, is the record set by the Coos Bay Lumber company schooner Lumber-town. At her dock in the west basin when the strike ended Feb. 4, the Lumber-town unloaded, sped to Coos Bay and returned with a record winter cargo of 2,300,000 feet in a period of nine days, and recently steamed into port with her second big lumber cargo in three weeks' time.

A total of nearly twenty lumber carrying ships brought in the record lumber cargoes. Last week a total of 19,812,000 feet of lumber was brought into the harbor as the lumber industry was the first to chalk up a return to normal trade levels.

Huge Yearly Volume
Picture of a line of lumber-laden trucks, 150 feet apart, stretching from Long Beach to New York and you have an approximation of the volume of lumber received at Long Beach-Los Angeles harbor in a year.

In 1936, a total of 713,351,000 board feet of lumber, including 10,000,000 feet of hardwood from the Philippines, passed through the twin ports.

PAY RENT TO YOURSELF AND OWN A HOME

You can't spend the same dollar twice, as you know, but you probably wouldn't at all mind paying your rent and then using the same money to buy yourself a home.

If you own your house—and have it mortgaged—you probably would be particularly in favor of a plan under which you could pay off principal and interest on your mortgage in easy monthly installments exactly as you pay rent.

This is the plan of the Federal Housing Administration.

KITCHEN LOCATION RULES COLOR PLAN

An attractive kitchen located on the north side of the house has white-painted cabinets, walls of yellow, floor of gray. Gray curtains adorn the windows, and a suggestion of black and coral is used in kitchen accessories.

Building Lots

With All Street Assessments Paid

40x140 Amapola	\$300
40x140 Beech	\$550
35x140 Acacia	\$500
40x140 Acacia	\$550
40x140 Amapola	\$300
50x140 Beech	\$750
50x140 corners on Beech	\$1000

YOUR RENT MONEY WILL BUY A HOME!

These Are REAL BUYS!

\$1300
Buys a 4-room house on Martine. Close to school. Assessments all paid. \$300 down. Balance monthly.

\$2600
For this large 5-room frame house, corner lot. All street improvements paid up. Terms.

\$2750
4-room stucco, 2 bedrooms, oak floors, furnished. Large 50x127 lot. Street paving paid. Only \$800 down, monthly payments.

\$2750
Buys good 6-room house on Co. ave., 3 bedrooms, reconditioned. Terms.

\$3250
Takes this 5 room house with breakfast room. Large service porch and double garage. Only \$500 down.

\$3000
A real bargain! Practically new 5 room stucco home recently reconditioned inside and out. Furnished. Breakfast room. Assessments paid. \$500 down.

\$3250
Buys good 6-room house, 3 bedrooms, on Amapola ave. Street assessments all paid. This is \$1500 under cost.

\$3150
New 5-room stucco, breakfast room, oak floors. This is a beauty. Let us show you. Terms.

\$4250
A real 6-room stucco, breakfast room, Roman bath, lots of built-ins, 50-foot lot, double garage, oh Amapola.

\$4250
Beautiful 6 room house on Acacia. 3 bedrooms, breakfast room. Double garage. Terms.

\$4750
Buys this exceptionally fine stucco home on Beech. 5 large rooms. Real fireplace. Breakfast room, double garage and lots of shrubbery. Terms.

Chicken Ranch

Three acres with 5-room house, also 2-room house, and equipment for 3500 chickens. Only \$4750. Terms.

Rentals

8-room house and 5 acres of land. Large barn and chicken equipment. \$80 per month.

Beautifully furnished 6-room house in Redondo Beach. \$80 per month.

TORRANCE INVESTMENT CO.
1409 SARTORI
Phone 176

FHA Insured Mortgage System

Made The Torrance Herald's Demonstration Home a signal contribution to this city's housing facilities. With the assistance of a FHA-approved loan this home can be duplicated here for about \$3,500. The loan will run for 19½ years. The monthly cost will be \$29.13 and this includes, as does all FHA insured mortgage loans, payment on principal and interest, taxes and insurance.

MILLER FURNITURE COMPANY

1513 Cabrillo Phone 545

"SELLS FOR LESS"

We Furnished Completely the Two Bedrooms In The Herald's

Demonstration Home
WE INVITE YOU TO VISIT THE MODEL COTTAGE

Identical Set On Display At Model Home

5-Piece "Desert Sand" Monterey Bedroom Set

Large Vanity With Square Mirror—Roomy Chest of Drawers—Low Bed—Nite Stand and Bench—On Sale At Miller's At Only

\$54⁵⁰
Complete



Table Lamps

For Every Room In Your Home
Priced From **95c TO \$6.95**

Bigelow Rugs

Any Size - Any Style - For Any Room
At the Prices You Can Afford to Pay
BROAD LOOM
As Low As **\$3.95** sq. yd.

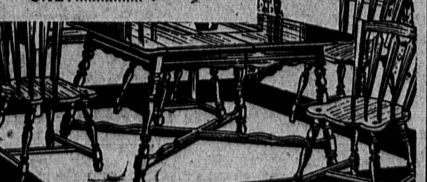
9x12
Fibortex Rugs
Made By Bigelow
Ass't. Patterns **\$12.95**

Roberti Mattress & Box Spring
GUARANTEED

As Shown in Model Home and Sold At Miller's. **\$24.95 FOR BOTH**

Monterey Dinette Set

Knotty Pine Design —
Table Has Pull-Out Extension — 2 Benches —
2 Chairs —
ONLY **\$19.50**



FHA Loans for New Homes and Modernization

For prompt action and considerate co-operation, make your application for a new home loan, or improvement of your present property, at your own local community bank.

We are prepared to give you every advantage under the Federal Housing Administration's liberal plan, and the officers of this bank invite you to come in and talk over your plans.

Torrance National Bank

"Your Community Bank"

HOME BUILDERS!

USE **BRICK**

- For Walls and Complete Houses
- For Bay Window Trims
- For Porches, Walks, Patios

Brick Is Ever-lasting



Brick Is Style Right

We Furnished All the Brick Used In The Torrance Herald's

Demonstration Home

★ STAR ★ BRICK CO.

17799 So. Western Ave.
PHONE GARDENA 3711