

Salad Bowl Farms in Palos Verdes are Being 'Soil-Saved'

(Continued from Page 1-A)

root and give permanent protection from run-off waters.

Where the gullies have a steep grade, masonry structures are built. Over 100 permanent small dams have been constructed. Thousands of square yards of gully bank have been sloped and are being planted to soil-holding trees, shrubs and plants.

CCC crews are busy at present building slab rock lined ditches which will serve as an outlet for terraces under construction. Space between the rocks is being grouted with a mixture of oil, water and dirt to make it water tight and prevent cutting underneath. Masonry terrace outlets connect the terraces to the lined ditches.

Terraces and other erosion control structures are plainly visible from the Palos Verdes drive, which meanders thru the area. From Portuguese Point to Point Vicente lighthouse a panorama of terraced fields blends into the blue of the Pacific. Little or no erosion can be seen on the farms that have been protected. Sheet erosion is plainly visible on clean-cultivated fields that are unprotected.

Tour On March 12

An example of the way erosion was raising havoc in this area previous to the start of the extensive control program now under way was the abandonment of the old Palos Verdes road, due to the fact that it was covered with soil every time a heavy rain came. Cost of keeping it clear was prohibitive and it was necessary to move the road to a new location.

A tour of the Palos Verdes project will be made March 12 during California Conservation Week. The tour will start at the CCC camp at 1:30 p. m. and will be under the direction of M. B. Rounds, Los Angeles county farm advisor. Palos Verdes camp is a mile from highway 101, at Lomita, and is reached over Palos Verdes drive.

Californiana

IMPORTANT POINT:

California had a "Dry Law" as far back as 1808. The Spanish authorities felt that too much attention to liquor manufacture, and possibly to liquor consumption, might seriously interfere with the business of developing the new territory. Therefore, any person wishing to brew his own liquor had to first secure official permission.

One such permit, signed by the king's procurator, reads: "The individual, Manuel Higuera, has permission to make as much as one barrel of peach brandy. Signed at Monterey, 19th day of August, 1805, by Noriega."

One notes, however, that the size of the barrel was not stipulated.

"CHOOSING UP":

The old-time padres were the original California cupids.

At the Mission of San Carlos Borromeo, founded by Father Junipero Serra, the padres instituted a sort of perpetual leap year, as a result of their paternal care for their Indian charges. From time to time all the unmarried Indian men were marched into the chapel and lined up against one wall. Then the Indian girls were marched in, and asked, "Which man do you wish to marry?" After a good deal of coy confusion, the girls would line themselves up against the other wall, each girl opposite the man of her choice. It must have been a good deal like "choosing up" for an old fashioned spelling bee.

The Indian marriages seldom produced many children. In this they differed radically from those of the old Spanish settlers of California. The Spanish families often blessed themselves with from 15 to 25 offspring.

TEAMSTER-TRACKSTERS:

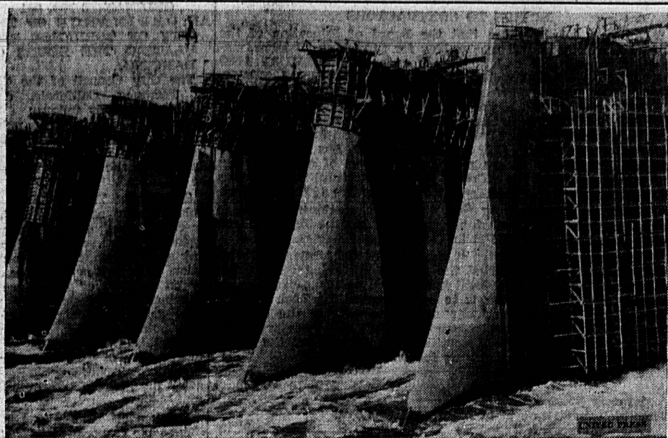
California's first race track was established by a couple of Irish teamsters.

James Riley, born in Ireland in 1826, came to California in 1849. Soon he was joined by his brother, Christopher, and the two went into business as "packers." They operated a string of freight horses and mules. One of their first routes was from Sacramento to Weaverville in Trinity county. Prospering in their business, the brothers Riley began to import and breed blooded horses. Eventually, in the 1850's, they established California's first race track, in Colusa county.

HOLD ANNUAL MEET

The 16th annual meeting of the Torrance Hospital association is being held at the Nurses' home, 1416 Cota avenue, this afternoon. All members of the association were notified by Secretary Donald Findley to be present.

Northwest Continues Battle Over Fish Dam



Latest development in the controversy over the cofferdam and spillway arrangement below the Bonneville Dam, on the Columbia River, pictured above, popped up recently when Colonel Thomas M. Robins, divisional chief of the United States engineers, in letters to Washington and Oregon fisheries authorities branded the structure prohibitive in cost and delay. Immediately those in favor of the dam, designed to aid the 10-million-dollar annual salmon run to get up the river to spawning grounds, went into action, asking aid and support of packers and conservationists. They contend the dam will provide a head of water through which salmon can squirm and jump to quiet waters above.

'Tuffy' Finds That Crime Doesn't Pay

The Boston pup, chief actor in the crime scenes above, is the pet of an Alhambra, Cal., child.



CLEVER HOSTESSES
Thrill Their Guests With Quality Bakery Products from . . .

Whitney's Bakery
1323 SARTORI
Orders of 25c or More Delivered Free—Phone 572

Lamb Pot-Pie Winter Treat

Lamb pot-pie and dumplings seem a perfect choice for the main dish of the meal on a cold winter's day. This dish is delicious, when well made, and is "filling" enough to give one a feeling of real satisfaction.

From the nutritive standpoint, lamb pot-pie and dumplings are an excellent combination, too. The dumplings provide the starchy accompaniment for the protein and minerals of the lamb, and the minerals and vitamins of the vegetables used with it. Hungry diners, however, seldom stop to balance their diets in this way, but they do know that lamb pot-pie with dumplings just "reaches the spot."

Lamb Pot-Pie
2 pounds shoulder of lamb, cut into small pieces
Flour for dredging
Lard for browning
1 onion
2 cups peas
4 or 5 carrots, diced
Salt and pepper
Dumplings

Dredge lamb with flour and brown in hot lard. Add sliced onion, season with salt and pepper, cover with hot water and allow to cook slowly until done, about two hours. Long enough before serving that they will be done, add the diced carrots and peas. For the last 15 minutes of cooking, drop dumplings on top of lamb and vegetables, cover tightly, and let cook until done, without removing the cover. Serve at once on a large platter with the dumplings arranged on top of lamb and vegetables. Thicken the liquid and serve this in a separate dish.

Motor Car Owner Pays Heavy Taxes

The average automobile in California cost its owner \$38.71 in special motor vehicle taxes during 1935, the Automobile Club of Southern California reports. This amount, for the last year for which complete figures are available was 20.3 percent of the average car's value.

BUY AT BARGAIN

Taking advantage of a present 10 percent reduction in the cost of ornamental light globes and canopies, the city council ordered the purchase of \$162.85 worth of this equipment Tuesday night. That sum was spent during the past 10 months, City Engineer Leonard said, for replacements.

INTEND TO WED

Notices of intention to marry were made this week by: James E. Horn, 34, Roi Tan hotel, Torrance; Mary E. Wireman, 32, 1019 West First street, San Pedro.

John J. Joyce, 21, 904 Portola avenue, Torrance; Mary Florence Housley, 18, 228 1/2 Olive street, Inglewood.

William Richardson, 26, Brighton apartments, Torrance; Jean Miller, 21, Roi Tan apartments, Torrance.

ON SAD MISSION

Mr. and Mrs. H. C. Anderson of 246th street, Lomita, left today for Coeur d'Alene, Idaho, where Mr. Anderson's mother passed away this week. His father is reported seriously ill.



MEAT

Has Been the LEADING FOOD of MAN Since Earliest Times

... and meats from the Quality Downtown Super Market are favorites with discriminating Torrance folk who appreciate finer quality at no additional cost.

FOR CONSISTENTLY BETTER MEATS, TRY THE . . .

QUALITY DOWNTOWN Super Market
1325 SARTORI
Russell Quayle



ROUND STEAK
—as Tender as Young Love!

It has been said that you can judge a market by the tenderness of its Round Steak! If that is so then Grubb's ranks tops.

Because Grubb's Round Steak is as tender as young love, it melts in your mouth, and economical housewives know that a piece of Grubb's Round Steak is as palatable and tasty as more expensive cuts bought elsewhere!

For real delight . . . Grubb's Round Steak!

GRUBB'S MARKET
CHOICE MEATS
PHONE 779-TORRANCE
IN SAFEWAY STORE 1929 CARSON ST.

ESTATE PETITION FILED THIS WEEK

Letters testamentary to the estate of the late Donald McDaniel, former resident of Torrance, are asked in a petition filed this week in Los Angeles superior court.

The petition was filed by sons Dear and John McDonald and states that value of the estate will not exceed \$5000. The will was executed in Torrance Oct. 30, 1933.

Clock Nearly Perfect
CLEVELAND, (U.P.)—Case School of Applied Science believes it owns the world's most accurate clock. It has a variation of only 17 ten-thousandths of a second per day.

Nursery At Hospital Kept Populated

New arrivals during the past week at Jared Sidney Torrance Memorial hospital were:

A son, born to Mr. and Mrs. Victor Cravetto, 224 30th street, Manhattan Beach, on Feb. 9.

A daughter, born to Mr. and Mrs. Max Felker, 513 South Sepulveda boulevard, Redondo, Feb. 4; a son, born to Mr. and Mrs. John Rust, 809 El Redondo Beach, Redondo, on Feb. 2; and a daughter to Mr. and Mrs. William Young, 1130 West 180th street, Gardena, on Feb. 7.

Your rent money will buy a home.

Dresses ELLWOOD'S Hosiery

1417 MARCELINA

The Torrance Home of Miss Hollywood, Darling and Beverly **WASH FROCKS**

The new, distinctive styles, tailoring and accents are inconceivable in the face of advancing prices. You will think so too, when you examine the fabrics and note the refreshing colorings. Every one fast color and pre-shrunk. Assortments are now at their fullest. \$1.95

GREY WOOL SLACKS, 14 to 18. \$2.95
BLUE DRILL SLACKS, 14 to 20. \$1.00

SAFEWAY'S SIXTH ANNUAL GROWER-CONSUMER LAMB CAMPAIGN

TENDER LAMB

The perfect meat for cold-weather meals...flavorful, easy to digest and rich in warmth-giving energy. Save money...order a roast, chops or other cuts this week

LAMB LEGS	lb. 25 ^c	<p>FREE A COMIC VALENTINE with each box of Cracker Jack</p> <p>3 boxes for 10^c</p> <p>RIPE OLIVES</p> <p>Elsinore Medium Olives 14c Green label, 9-ounce can Elsinore Large Olives 15c Red label, 9-ounce can Elsinore Jumbo Olives 20c Dark Blue Label, 9-oz. can</p> <p>MISCELLANEOUS FOODS</p> <p>Stokely's Catsup 12c Fancy grade, 14-ounce bottle Quick Fudge Mix 15c Make candy easily. Per package. Milani's Spaghetti 13c 16-ounce glass jar Van Camp Spaghetti 10c 22 1/2-ounce size can Snowdrift Shortening 58c 1-lb. can, 27c; 3-lb. can</p>
LAMB ROAST ROUND BONE	lb. 22 ^c	
LAMB SHOULDER	lb. 19 ^c	
LAMB BREAST TO STEW OR BRAISE	lb. 10 ^c	
LAMB CHOPS SHOULDER OF LAMB	lb. 28 ^c	
FANCY EASTERN BACON	lb. 29 ^c	<p>Hen Turkeys lb. 23^c Fancy quality, fresh-dressed, hen turkeys.</p> <p>Colored Hens lb. 27^c Dry-picked, milk-fed, colored hens.</p> <p>Made by Makers of Crisco</p> <p>Limit 2 Packages 4 lb. pkg. 49^c</p>
Shortening	4 lb. pkg. 49 ^c	
Libby Tomato Juice	3 No. 2 25 ^c	
Val Vita Tomato Juice	13-ounce size can 5 ^c	
Val Vita Tomato Sauce	3 7/8-oz. cans 10 ^c	

Alway Coffee	Mellow-mild blend. Ground to order. 1-pound can 26 ^c	19 ^c	Libby Tomato Juice	3 No. 2 25 ^c
Edwards' Coffee	Dependable Brand 2-lb. can	49 ^c	Val Vita Tomato Juice	13-ounce size can 5 ^c
Nob Hill Coffee	Finest blend that money can buy	24 ^c	Val Vita Tomato Sauce	3 7/8-oz. cans 10 ^c
Canterbury Tea	Fancy black 1 1/2-lb. bag	23 ^c	Stokely's Asparagus	All green points 10 1/2-oz. cans 15 ^c
Canterbury Tea	Fancy green 8 1/2-lb. bag	15 ^c	Champion Cut String Beans	3 No. 2 27 ^c
NuMade Mayonnaise	1 pint 22 ^c	38 ^c	Stokely's Corn	Country Gentleman Cream style pack 2 cans 25 ^c
Salad Dressing	NuMade Brand 18c pint size jar	31 ^c	Burbank Hominy	Large, white kernels No. 2 1/2 can 9 ^c
Brookfield Cream Cheese	Assorted 5-oz. jars	17 ^c	Pork & Beans	Van Camp Brand 22 1/2-oz. can 10 ^c
Cheese	Brookfield, American, Brick, Pimento or Limburger 1/2-pound package	17 ^c	Globe A-1 Spaghetti	Also long 12-oz. 2-lb. 21 ^c
Dainty Mix Fruit Cocktail	No. 1 can	11 ^c	Golden Age Macaroni	Also spaghetti per and noodles. pkg. 9 ^c
Mariposa Peaches	Your choice sliced-halves 2 No. 2 1/2 cans	25 ^c	Cello-Pack Lentils	Fancy grade Cello-Pack bag 1-lb. 12 ^c
Our Choice Pears	Halves in good syrup No. 2 1/2 cans	17 ^c	White Beans	Large or Small 1-lb. 12 ^c 2-lb. 22 ^c
Jell-well	Assorted flavors of fresh gelatine. "Cube-Flavor" 3 boxes	13 ^c	Flour BLOSSOM	No. 5 20c No. 10 37c 24 1/2-lb. sack 80 ^c
Max-i-mum Milk	Used in cooking Saves money 14-ounce can	6 ^c	Bakery Special	Sour Dough & American French Bread 1-lb. loaf 10 ^c
Cream of Wheat	14-ounce can 14 ^c 28-ounce package 23 ^c		Calo Dog Food	Stock up on this 2 tall quality ration. 2 cans 15 ^c

RED SALMON 2 37^c

LIBBY OR DEL MONTE. A National Salmon Week feature. Note price.

SNOW FLAKES 15^c

National Biscuit Salted Sodas. Purchase a package at this price.

FLOUR 44^c

KITCHEN CRAFT BLEND New Home-Type Flour No. 10 bag

Guaranteed to give satisfaction. No. 6 bag, 24c; 24 1/2-lb. bag, \$1.00.

CARROTS 3 bunches for 5^c
Firm, crisp, smooth, fresh-pulled carrots in large bunches.

DATES lb. 15^c
Coastal valley grown. Natural or processed types.

AVOCADOS each 5^c
Fuerte variety, medium size. Rich in oil. Note price.

BANANAS 2 lbs. 15^c
Firm, golden-yellow, ripe bananas. Large plump fingers.

SAFEGWAY

PRICES EFFECTIVE THROUGH SATURDAY, FEBRUARY 13, IN SAFEWAY-OPERATED DEPARTMENTS OF STORES WITHIN THIRTY-FIVE MILES OF LOS ANGELES.

SUGAR 49^c

Quality granulated sugar, packed in paper bag. Note price.

10-pound paper bag