



YOUR CHOICE OF FINE FOODS AT . . .

AMAZING SAVINGS!

"Check Our Shelf Prices"

FANCY MILK

LAMBLEGS lb. **22¹/₂**
 LAMB SHOULDERS, lb. 15c

 GRAIN-FED "BRANDED" STEER BEEF
STEAKS ROUND, SWISS OR SIRLOIN lb. **23^c**

 MORRELL'S PRIDE FANCY EASTERN SHANKLESS
PICNIC HAMS 4-6-lb. Avg. lb. **23¹/₂**
 Cello. Wrapped

 EASTERN GRAIN-FED
PORK LEG OR LOIN ROAST lb. **24^c**

 FRESH
GROUND BEEF lb. **15^c**

GRAIN-FED "BRANDED" STEER BEEF

ROASTS CENTER CUT CHUCK lb. **17¹/₂**
CHUCK lb. **17¹/₂**

DEL MONTE—EARLY GARDEN

ASPARAGUS
 GREEN No. 2 can **17^c**

CALIFORNIA

TOMATOES 3 No. 2 1/2 cans **25^c**

 TENDER **SWEET PEAS** No. 2 can **10^c**

 EIGHT O'CLOCK—MILD & MELLOW
COFFEE "THE WORLD'S LARGEST SELLER" 1-lb. bag **19^c**
 3-lb. bag, 55c

 CRUSHED **SWEET CORN** No. 2 can **10^c**

 MISSION **PUMPKIN** 2 No. 2 1/2 cans **15^c**

 MARTINELLI APPLE **CIDER** gallon **59^c** quart **19^c**
 IONA FAMILY "ALL PURPOSE" **FLOUR** 24 1/2 lbs. **75c** 10-lb. sack **35^c**
 49 lbs. **\$1.45**

 "KEEP THAT SCHOOLGIRL COMPLEXION"
PALMOLIVE SOAP cake **5^c**

LIBBY'S

TOMATO JUICE
 2 No. 2 cans **15^c**

 RALSTON'S **WHEAT CEREAL** large pkg. **19^c**

 HORMEL **SOUP** VEGETABLE OR PEA 16-oz. can **10^c**

 GRANULATED **PEET'S SOAP** large pkg. **25^c**

 WHITE HOUSE **MILK** EVAPORATED tall can **6^c**

 DIXIE CRANBERRY **PRESERVES** 2-lb. jar **19^c**

 ASSORTED FLAVORS **SPARKLE** DESSERTS & PUDDINGS 3 pkgs. **13^c**

 HEINZ **MINCE MEAT** 1-lb. can **19^c**

 GINGER ALE, SPARKLING WATER
CANADA DRY 3 12-oz. bottles (plus deposit) **25^c**
 OR LEMON-LIME RICKY.

 GRANULATED SOAP
WHITE KING large pkg. **28^c**

 DEL MONTE **TOMATO SAUCE** 3 9-oz. cans **10^c**

 DEL MONTE—EARLY GARDEN
SUGAR PEAS 2 No. 2 cans **25^c**

 DEL MONTE **BLACKBERRIES** No. 2 can **14^c**

 GERBER'S ASSORTED
BABY FOODS 3 4 1/2-oz. cans **23^c**

 SULTANA **RED SALMON** No. 1 can **17^c**

 SHORTENING
SNOWDRIFT 3-lb. can **52^c**

 CONDENSED MILK
EAGLE BRAND 15-oz. can **17^c**

 GHIRARDELLI'S
CHOCOLATE GROUND 1-lb. can **29^c**

 VERMONT MAID
SYRUP CANE & MAPLE 12-oz. jug **17^c**

 DERRY **BEEF TAMALES** No. 1 can **13^c**

 TOBACCO
PRINCE ALBERT 1-lb. can **75^c**

 BAKING POWDER
CALUMET 1-lb. can **18^c**

 YUKON CLUB LIME RICKY, SPARKLING WATER, ROOT BEER OR
GINGER ALE 2 12-oz. bottles (plus deposit) **9^c**

 "VALENTINE PARTY SPECIAL"
HOT SU-SU NUTS 1-lb. **17^c**

 "THE ORIGINAL" PILSENGOLD
CANNED BEER 2 12-oz. cans **15^c**

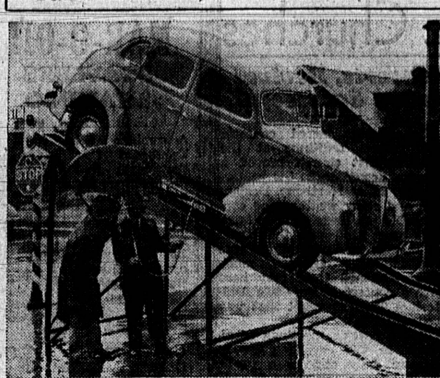
 GIANT REDSKINS
 Blanched Jumbos, lb. 19c
 Bridge Mix, 1/2-lb., 23c

FRESH FRUITS AND VEGETABLES

 SNOWBALL HEADS
CAULIFLOWER each **10^c**
TOMATOES MEXICAN RED RIPE lb. **10^c**
AVOCADOS FUERTE LARGE 3 for **10^c**
RHUBARB HOT HOUSE SWEET 2 lbs. **29^c**
ONIONS YELLOW 3 lbs. **10^c**

 JUICY WINESAP
APPLES 4 lbs. **25^c**

Rain or Shine, Ford Brakes Hold



Rain or shine, the new braking system of the 1937 Ford V-8 holds the car permanently on a 45 percent grade, as this photo shows. Brake demonstration ramps similar to the above are now in use at over 50 Ford dealerships in the Long Beach branch territory graphically showing the effectiveness and dependability of the new braking system as well as the various mechanical features of these "self-energizing" brakes. A dealer here is explaining the new cable-conduit control—steel cables conducting the braking force thru steel tubes—which, as engineers point out, affords "the safety of steel from pedal to wheel."

ASSOCIATED S AGROCCERS
 INDIVIDUALLY OWNED STORES

SPECIALS FOR WEEK-END OF FEB. 12th and 13th

White King
Laundry Soap
 3 BARS **10^c**
White King
Toilet Soap
 3 BARS **14^c**
GULF KISSED
OYSTERS
 5-oz. Can. **2 FOR 25^c**
BORAX
SOAP CHIPS
 Large. **22^c**
FRANCO-AMERICAN
SPAGHETTI
 3 CANS **25^c**
BORAX
POWDER
 2 Lbs., 25c; 10 Ozs. **10^c**
VAN CAMP'S
PORK & BEANS
 No. 1 Can. **2 FOR 15^c**
WOODBURY'S
SOAP
 3 FOR **25^c**
HILLS BROS.
COFFEE
 Lb. **28^c**
SOFTASILK
CAKE FLOUR
 Lge. Pkg. **26^c**
1 Box GRAPE-NUTS FLAKES
1 Box POST BRAN FLAKES
1 SILVER-PLATED MICKEY MOUSE SPOON
ALL FOR 21^c
VERMONT MAID
MAPLE SYRUP
 24 Ozs., 37c; 12 Ozs. **19^c**
THRIFTY
Salad Dressing
 Qts., 28c; Pts. **18^c**
GOLD SWAN
MILK
 4 FOR **25^c**
SPERRY'S
Pancake Flour
 Med., 17c; Small. **10^c**
BLACK SWAN
TUNA
 2 FOR **29^c**
BORAXO
SOAP
 Large. **23^c**
BLACK SWAN
PINK SALMON
 No. 1 Can. **2 FOR 25^c**
Scotch Granulated
SOAP
 Large. **23^c**
B & M
Baked Beans
 Lge. Can. **17^c**
B & M
Brown Bread
 Lge. Can. **16^c**
B & M
Lima Beans
 No. 2 Can. **10^c**

Your Associated Grocers

DOAN'S MARKET

2223 Torrance Blvd., Torrance, Phone 486

GEO. H. COLBURN

645 Sartori Ave., Torrance, Phone 622

RICHARD COLBURN

1801 Cabrillo Ave., Torrance, Phone 110

Week-end Storm Drenches City
But Causes No Flood Damage

(Continued from Page 1-A)

GIVES TIPS
FOR BRIDGE
LUNCHEONS

February with its assorted holidays is a favored time for entertaining. There will be many bridge-luncheons scheduled for the next few weeks, and so a few suggestions of meat dishes suitable for such events are given by Inez S. Willson, home economist.

The choice of meat dish depends somewhat on the elaborateness of the occasion, but, in most cases, the meat dish should be one which is easily prepared and served as well as universally liked. Lamb chops, because they fit all these requirements, are a luncheon favorite, but they are by no means the only one. Have you served lamb on brochette to your luncheon guests?

Lamb on Brochette

2 pounds lamb steaks or lamb shoulder
 1/2 pound bacon
 Salt and pepper
 Have lamb steaks or shoulder cut into one-inch cubes. Thread on skewers with a square of bacon between each two pieces of lamb. Thoroughly preheat broiling oven. Turn heat on "high" and place meat on rack about three inches from source of heat; allow to broil until nicely browned on one side. Season, turn and brown on other sides to finish cooking.

A casserole dish is a wise choice for a luncheon because it may be prepared ahead of time; and the baking done while guests arrive. And if there should be delay in serving the luncheon, there will be no damage done.

Ham and Gratin

2 cups chopped cooked ham
 4 tablespoons butter
 4 tablespoons flour
 2 cups milk
 1 egg
 1 stalk celery
 1 tablespoon grated onion
 1/4 teaspoon paprika
 Melt butter, add flour and mix well. Add milk, and cook until thickened. Add egg, well beaten, seasonings, and chopped cooked ham. Pour into a buttered baking dish and bake in a moderate oven (350° F.) until heated thru and set.

Scout Week Marked
By Review; Younger
Boys' Unit Planned

Observance of Boy Scout Week locally this week was confined to a "board of review" at the Scout hall Monday night and the issuance of an announcement of prime importance to parents of boys under Scout age. The review will be held for boys who have passed tests during the past two months. Bernie Donahue, court of honor chairman, will be in charge of the session. Plans were made for a court of honor Feb. 25.

At a recent meeting of the district Scouting committee, Leonard Babcock was appointed neighborhood commissioner and Dale Riley was named neighborhood commissioner to launch a Cub Scouting program in Torrance within a month. Cub Scouts are boys from nine to 12 years of age and is the younger organization. All parents interested in having their youngsters enter Cub Scouting should see Riley at once at the city park playground.

GOING TO SNOW
 Boy Scout Troop 219 was forced to postpone its trip to the snow last weekend on account of the rain but will make the trek to the mountains this weekend.

TERRIBLE NOSE DISCHARGE
EMBARRASSES LADY

"I had a bad discharge from my right nostril and used from 4 to 6 handkerchiefs daily. It was terrible," writes Mrs. O. E. J., Ocean Beach, Calif. "No words can express my embarrassment in company. I tried many treatments for 2 years with no success. Copinol gave me immediate relief. That crackling feeling in my head is gone. I never use handkerchiefs any more. My head is clear. I cannot say enough in praise of Copinol." Unusually successful new formula is GUARANTEED TO GIVE YOU INSTANT RELIEF. Helps clear out germs, mucus and infection-carrying pus from nose and throat. Relieves sneezing spasms.

FREE TREATMENT

Thousands of cold victims and druggists testify Copinol is most effective Nasal Medicine made for relieving Congestions, Satisfy yourself. Get low-price trial bottle from Dole Drug Co.—USE IT! Unless you're delighted with INSTANT relief, return empty bottle and get money back. Trial costs you nothing! Dole Drug Co.



For Relief of Congestions of Sinus, Hay Fever, Catarrh of Nose and Throat, Head Colds, Asthma and Bronchitis.

Copinol
 THE MOST EFFECTIVE NASAL MEDICINE