

## COMING RACES PREP FOR BIG 'CAP

A line on the probable make-up of the field for the world's richest stake—the Santa Anita Handicap on Saturday, Feb. 27—will be furnished with the running of the San Carlos, \$5,000 added at a mile and a sixteenth, this coming Saturday (Feb. 6). Another prep for the Big 'Cap candidates will be the San Antonio, \$7,500 added at 1 1/4 miles, on Saturday, Feb. 20.

Next in importance on the Santa Anita schedule will be the settling of two California championships. Seventy-two California-bred two-year-olds have been nominated for the San Gabriel Juvenile that will determine the fastest over the three-furlong straightaway on Friday, Feb. 12.

**Derby on Feb. 22**  
The next day—Saturday, Feb. 13—the Santa Catalina will be run. It is for California three-year-olds and upwards for \$10,000 added over a 11-16 miles and will crown the best of the season's home-breds. The two sparkling winning races of Harrogate in sprint-horses forth another candidate to join Don Roberto, Campillo, Some Devil and some others who have been flashing fine form.

The Santa Anita Derby, a record \$50,000 in added money, is scheduled for Washington's Birthday, which falls on a Monday. It will bring to the post the greatest field of three-year-olds ever at a winter track and is already stirring up much enthusiasm. One hundred and six are eligible and all indications point to more than 25 accepting weights which are five pounds below scale.

## Malone Pitches Shut-Out Win for Merchants

(Continued from Page 7-B)  
the Merchants one hit, struck out one and walked one.

**Meet Strong Club**  
Next Sunday the Lomitanos entertain the Pacific Club, an outfit with a good reputation and fresh from holding Sawtelle to a 12-inning tie game of 2 to 2. Last Sunday's box score:

LOMITA			
	AB	R	H
Palica, cf.	4	1	0
J. Venable, rf.	3	1	1
Grant, lb.	4	0	1
S. Venable, 2b.	4	0	0
Morris, ss.	4	1	1
League, c.	3	1	0
Markham, 3b.	4	0	1
Correll, lf.	4	0	2
Malone, p.	3	0	0
<b>Totals</b>	<b>33</b>	<b>4</b>	<b>6</b>

WHIPPET GAS			
	AB	R	H
Gill, ss.	4	0	0
Turnbull, lf.	4	0	0
Wolcott, c.	2	0	0
Kelly, lb.	4	0	1
Milton, 3b.	3	0	0
Thomas, cf.	2	0	0
Lyster, 2b.	2	0	0
Besteades, rf.	3	0	0
Levin, p.	3	0	0
Blasinsky, p.	1	0	0
McCowan, c.	1	0	0
<b>Totals</b>	<b>28</b>	<b>0</b>	<b>1</b>

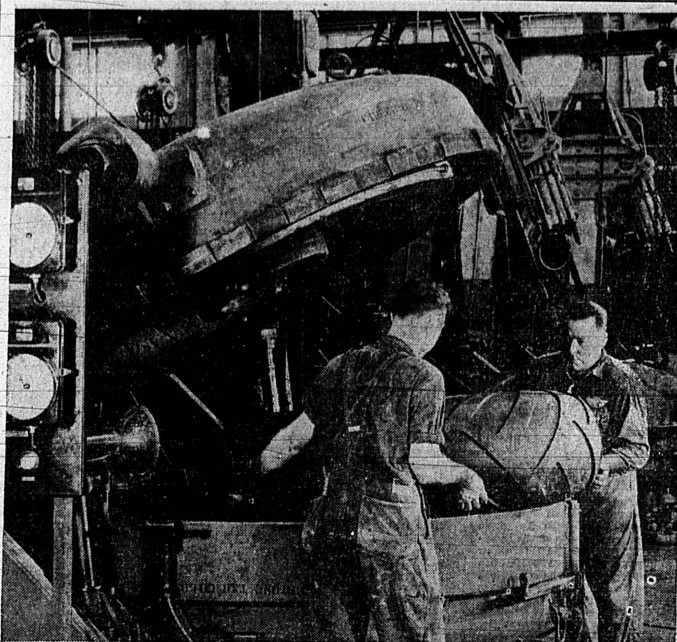
Score by innings:  
Whippets.....000 000 000—0  
Lomitanos.....010 021 000—4

## Banning Senator Has Outstanding Relief Aid Bill

Outstanding among the proposals designed to add to California's social security program is a bill introduced this session by Senator John Phillips, of Banning.

He asks permanent relief and rehabilitation of the unemployed, and indigent families in the state by removing them to rural

## LID WEIGHS 17,000 LBS. ON GIANT TIRE MOLD



New Tire Mold Installed in Firestone Plant at Los Angeles Said To Be Largest on Pacific Coast

## Deer Hunters Bag 25,020 Last Season

California deer hunters had the most successful season last year of any during the past 10 years with the exception of 1931.

This was the highlight of a report made by Joe S. Hunter, chief of the state bureau of game conservation, in which it was estimated that 25,020 deer were taken during 1936, an increase over more than 3,000 head or 14 percent compared with the 1935 season.

This total has been exceeded only by the 25,805 deer brought down in 1931. In Los Angeles county hunters bagged 772 deer during the last season, the report said.

## Legion Plans Stag for All Veterans

A number of Wilmington members of the American Legion turned out to visit Bert S. Crossland Post of this city last Tuesday night. The gathering was in the nature of an inter-city session with Commander Pat Boyle, his staff and members giving the neighboring Legionnaires a royal reception. Commander Boyle announced that on Feb. 16 the local post will hold a dinner and boxing wrestling show for all veterans of this vicinity. All ex-service men, regardless of their affiliations, are cordially invited to attend. A committee composed of Jim Wilkes, first vice-commander; Jim Burchett, past commander; Grant Birkdull and Spud Murphy, is planning the stag event.

communities to be located on large tracts of good agricultural land.

Loans would be made thru the department of social welfare to a non-profit cooperative agricultural association which would be set up for the purpose of administering the act.

**Friday Club Organized.**  
COLUMBIA, Mo. (U.P.)—Students of Missouri University have formed a "Thank-God-It's-Friday club" to promote weekend relaxation.

## YOU'RE INVITED . . .

## To See The Sensational New PONTIAC

To be Given as 1st Prize in This District  
In the Big Kellogg Corn Flake Contest.  
See It . . . Ride in It

WE CAN SAVE YOU MONEY ON THE PURCHASE  
OF A USED CAR!!

## Earl H. Forbes Pontiac Sales & Service

1528 Cravens Ave. Phone 895  
TORRANCE, CALIFORNIA

## Skirts Hung On Witness Chair Here

He may not have said it but the addition to the witness stand in his city court this week indicates that he at least thought it.

"Let there be modesty in my court," was Judge Robert Lessing's command that led to the installation of a curtain railing on three sides of the stand. Hereafter when women witnesses install themselves in the chair they need have no compunction about comfortably crossing their legs.

The little curtain will modestly block "eminent counsels," jurymen and spectators from sight of a "well-turned ankle" or more. No longer will the witness be exposed to the full gaze of all in the courtroom.

Addition of the knee-length drapes will be followed by others, considerably longer and wider that will hang from behind the bench. These have been ordered and when hung will make Judge Lessing's courtroom similar to the most august chambers in Los Angeles county.

The larger drapes, the magistrate says, will afford no barrier, like the witness chair's dress, to him—being merely a decorative note.

## Auto Crashes Cost County Less In '36

Damages to county-owned automobiles as the result of traffic accidents last year cost the county but \$2,852, as compared with \$4,018 for 1935, according to a tabulation prepared for the board of supervisors this week.

Careful check is made of all county-owned cars involved in accident. There were more accidents last year than the year previous, however, the report showed. Total for last year was 260, as compared with 253 for 1935.

## Special Two Weeks Only—Feb. 8-20

### AUTO TOPS

DOUBLE TEXTURE TOP DECKING  
SEDANS \$5.50 COUPES \$3.50  
COMPLETE INSIDE TRIM JOB \$15.00  
In Whipcord or Broadcloth Material  
We Specialize In Windshield Glasses, Door Glasses  
and Window Regulators

**TORRANCE AUTO TRIM SHOP**  
1815 213th ST. TELEPHONE 897

## SAVINGS

### ON METLOX

### "Poppy Trail"

## POTTERY



By popular demand Metlox repeats its sensational offer of 38 lovely pieces of "Poppy Trail" Pottery in Rainbow Colors! You actually save \$4.90 on the set, which includes:

- |                        |                      |
|------------------------|----------------------|
| 6 7-inch Dinner Plates | 1 Nappy              |
| 6 4-inch Salad Plates  | 1 12-inch Chop Plate |
| 6 Fruit Dishes         | 6 Cups               |
| 6 Chili Bowls          | 6 Saucers            |

MANY OTHER BEAUTIFUL SETS OF CHINA

Priced from  
\$4.95 to \$44.95

Easy Terms

## National Home Appliance Co.

HARRY M. ABRAMSON—"Friendly Credit"

1318 Sartori Avenue, Torrance

Phone 78

## Sherfey's Home from Cold Trip North

Ending a cold motor trip to Idaho, via Salt Lake City, and return, Mr. and Mrs. J. H. Sherfey returned home late last week from a visit with Sherfey's parents at Buelie. While in the northern state, Sherfey, who is associated with Stone and Myers mortuary here, successfully passed the state mortuary board examinations. They report much snow and considerable bad roads north of Salt Lake.

**FORT WORTH, Tex. (U.P.)**—Women lose more articles than men, but less expensive ones, a survey revealed here.

## Huge Water Tank Drained, Painted

A city water department crew drained the 1,850,000-gallon main reservoir tank off Torrance boulevard Monday morning to complete the painting of the huge storage receptacle that is 104 feet in diameter and 36 feet high.

About 200,000 gallons of water were released, according to City Engineer Frank R. Leonard. The tank has now been filled to capacity from the 250,000-gallon pressure tank that stands 185 feet above the larger storage container.

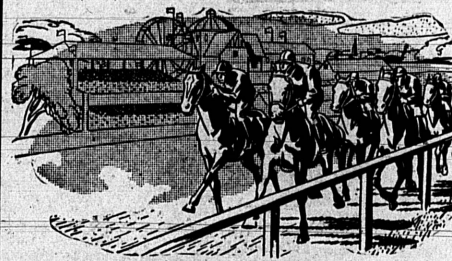
Your rent money will buy a home.

## Air Rifle Users Lectured By Judge

Three boys shooting air-rifles Sunday near Beech and Sonoma streets were questioned by police and told to report to City Judge Robert Lessing Tuesday. The magistrate gave the youngsters a lecture on penalties that would follow if they continued to break the city ordinance which bans the use of such armament in Torrance. The trio was then released.

**Legislators Go to School**  
BOSTON, (U.P.)—Sixty newly elected Massachusetts legislators went to school to learn legislative procedure and etiquette.

## "The PACEMAKER"



WALTER G.  
LINCH  
OF REDONDO  
BEACH

## USED CAR

Bargain Pacemaker  
of the World!

COME ONE!

COME ALL!

No Car Too Small! . . . . . No Price Too High!  
IN LINCH'S

GREAT FEBRUARY LIQUIDATION  
OF

## Low Priced USED CARS

Sign Nothing - Promise Nothing - Buy Nothing  
Till You See Linch - He Trades High, Wide and Higher

### WINNERS!

'27 CHEVE COACH	\$35
'30 NASH CAB.	\$45
'29 ESSEX SEDAN	\$55

### SLEEPERS!

'28 FORD COUPE	\$65
'29 DURANT SEDAN	\$75
'29 FORD SPT. RDST.	\$95

### SURE THINGS!

'29 CHEVE COUPE	\$95
'28 DODGE FAST 4 CP.	\$95
'28 OLDS COACH	\$95

### PACERS!

'29 FORD SPT. COUPE	\$95
'28 DODGE VIC. 6	\$115
'30 STUDE BR'GHAM	\$115

### DARK HORSES!

'29 FORD FORDOR SD.	\$135
'29 DESOTO COUPE	\$155
'30 FORD SPT. COUPE	\$165

### LONGSHOTS!

'30 HUDSON SPT. SD.	\$165
'29 CHEVE 4-DR. SED.	\$165
'30 BUICK SEDAN	\$195

### SURESHOTS!

'30 STUDE SED. 6WV Trk.	\$185
'33 WILLYS SEDAN	\$225
'31 CHEVE CON. CPE.	\$245

### SPRINTERS!

'34 FORD COUPE	\$395
'33 DODGE DEL. SED.	\$445
'35 FORD TUDOR	\$475
'32 P.B. PLYMOUTH SD.	\$345

### FAVORITES!

'32 CHEVE DEL CPE.	\$325
'33 PLYMOUTH SED. DE LUXE	\$395
'35 PLYMOUTH SED. DE LUXE	\$595

ONLY 5 MINUTES FROM TORRANCE

## Dodge Walter G. Linch Plymouth

The South Bay's Oldest and Largest Dealer

OPEN EVENINGS AND SUNDAYS

Corner Torrance Blvd. & Catalina

Redondo Beach

Phone 2122