

RAILROADS SEE DANGER IN 6-HOUR DAY LAW PROPOSAL

Railroads of the West have been working since 1880 to solve problems of producers of perishable fruits and vegetables in California and Arizona who ship their products to eastern markets, according to J. R. Hayden, assistant to the president of the Santa Fe Railway.

"Our ability to sell perishable products in eastern markets had its first real test during the decade beginning with 1880 when a few cars of citrus fruits, produced in Southern California, were successfully transported and sold," said Hayden in a recent western radio talk.

"During 1880 some 4,000 cars of California citrus fruit were marketed and planting of commercial orchards on a large scale was well under way. During 1900 approximately 17,000 cars of citrus fruit moved east. A modest tonnage of celery and other vegetables had also begun to move. Since 1900 the production of perishable traffic has reached a scale unparalleled in the history of irrigated agriculture," declared Hayden.

Oppose 6-hour Day
"Since these formative days, rail carriers have brought about many improvements designed to aid the industry. Today the carriers are adequately prepared with equipment and power to meet peak demands, thus terminating one of the problems of the earlier days.

"Happily, the problems of the perishable industry and those of the carriers have always been approached in a spirit of mutual confidence and understanding. If the railroads are not subjected to new and unnecessary legislation, or other influences beyond their control, there is every reason in believing that the industry and the railroads will continue to adjust their differences in the future, as they have in the past."

Reference to new legislation, Hayden pointed out, particularly concerns the so-called six-hour day law which is to be brought before the present session of Congress. If this becomes law the added cost to

Steels 'Tho Tough, Had Tender Names

Tulip, Daisy, Swan, Drake and many other once highly respected trade names for various makes of iron and steel products which appear in the archives of the American Iron and Steel Institute are now only memories of a more romantic era. Increasing appreciation of engineering data among both manufacturers and users of iron and steel, together with the industry's progress toward standardization of its products for the benefit of consumers are chiefly responsible for the disappearance of most of the old trade names.

As recently as 35 years ago the trade names of tin plate were more closely allied with botany and zoology than with the steel business. Among the tin plate brands chosen from floriculture were Crocus, Hyacinth, Jonquil, Cornflower, Sweetbrier, Holly Wood, Golden Rod, Moonflower, and Star Flower. Zoology contributed the well-known tin plate brand names of Duck, Drake, and Swan.

Trade names still appear in the advertising of steel mill products, but most of them are descriptive of the properties, uses, or composition of the steels, or indicate the name of the manufacturing company. Many stainless and other alloy steels are sold under trade names.

USC Students Hurt by Hit-Run Driver

Two U.S.C. dental college students were injured Wednesday morning when their car was carelessly struck by a hit-and-run driver at 228th and Main street. They were rushed to the Jared Sidley Torrance Memorial hospital for treatment and later removed to their homes. The asserted hit-and-run driver was reported arrested later by deputy sheriffs.

The students were Joe Paige, 26, Los Angeles, who was treated for a fractured leg, severe cut on his left ear and abrasions of his left leg; and Buster Oliver Wallace, 23, Long Beach, who had multiple cuts about his face.

We Are Proud of Our
IMMEDIATE
Delivery Service
(On orders of 25c or more)
Phone 573
Whitney's
Bakery
1323 SARTORI

STATE PICNICS

MISSOURI REUNION
The annual winter picnic reunion of Missourians will be held all day Friday, Feb. 12, in Sycamore Grove park, Los Angeles. There will be headquarters for each county and registers for enrollment.

COLORADOANS CALLED
The annual picnic for all former residents of Colorado will be held all day Sunday, Feb. 14, in Sycamore Grove park, Los Angeles, with basket dinners at noon. A popular program is planned and county registers and headquarters will be open all day so friends may meet each other.

WISCONSIN RALLY

All who ever lived in Wisconsin are invited to meet for the picnic reunion, all day Saturday, Feb. 13, in Sycamore Grove park. There will be county registers and headquarters so all can find the old neighbors. There will be a brief program opening about 2 o'clock.

City Loses Landmark
MARTINEZ, Calif. (U.P.)—Wreckers here are tearing down the old Blum house which was the first in the city to have a bathtub with running water.

Cheese Thief Named 'The Rat'
OROVILLE, Calif. (U.P.)—The police are looking for a burglar they name "The Rat." He stole all the cheese from the refrigerator of a local resident. Nothing else was touched.

Visitor



This candid camera study of Alfred G. Vanderbilt Jr., of the wealthy Eastern family, was taken this week as he chatted in Hollywood after returning from Santa Anita race track, where he has a stable of horses.

Coal Mine Safer Than Home
ST. CLAIRSVILLE, O. (U.P.)—P. V. Wagell, attorney for the state industrial commission, says that working in a coal mine is just twice as safe as staying at home. His figures are based on the number of accidents occurring in mines and homes.

HOMES ARE GOOD INVESTMENT

Have you owners of vacant property in this city studied the possibilities of the National Housing Act loans from an investment standpoint? It is a known fact that there is an acute shortage of properties for rent. Numerous employees working in this district are forced to go outside to find places to rent. This not only works a hardship on the workers themselves, but causes payroll money to be spent outside this community and takes prospective business away from local business houses.

Now is the time for divested property owners to take action. Those owning lots or tracts of land should take advantage of the liberal terms offered by the federal housing administration. Under the National Housing Act you are permitted to build up to and including four residential units on any one piece of property. Think what this means from an investment standpoint. The Better Housing program has an office in the Chamber of Commerce for your convenience, and those who are interested in title II loans under the National Housing Act may secure information and pamphlets free of charge. The office hours are 9 a. m. to 4 p. m. daily, except Saturday.

20 Arrests Made Here Last Month

Twenty arrests were made by local police during January, according to Capt. John H. Stroh. Disturbance of the peace and intoxication accounted for eight arrests each—the others were: Petty theft, three; drunk driving, two; and one each for obtaining money under false pretenses, hit-and-run driving, aiding hit-and-run, forgery, drunk in auto, reckless driving and excessive number of chickens confined within city limits.

Chess Played By Mail
HARRISBURG, Pa. (U.P.)—Chess, played by correspondence, enables William J. Werner here to match wits with two New Zealand opponents, 12,000 miles distant.

MAGIC...

is the only word that adequately describes the way in which we salvage your old shoes and return them to you renewed and ready for added hard usage.

KENNEY'S MASTER SHOE REBUILDING

1917 CARSON
At Cabrillo

"Shoes Rebuilt to Look Like New and Wear Better"

Build a Home Now!

Cites Rail Tonnage

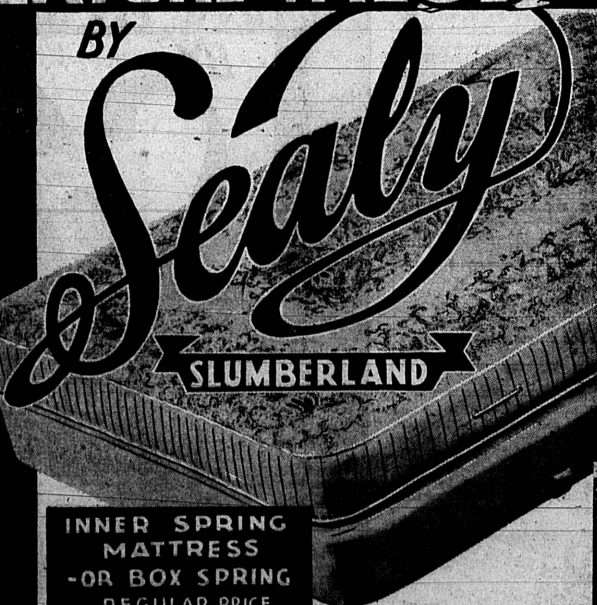


J. R. HAYDEN
Assistant to the president, Santa Fe Railway, Headquarters San Francisco.

the railroads of doing business would approximate 25 percent, in other words the total increase in the annual payroll of the railroads may reach \$853,000,000, Hayden said.

February FEATURE VALUE

BY



INNER SPRING
MATTRESS
-OR BOX SPRING
REGULAR PRICE

\$ 29.85 EACH

SALE PRICE

\$ 19.85 EACH

Save \$10.00 EACH

FULL OR TWIN
SIZE

BOX SPRING
TO MATCH

OUTSTANDING VALUE
ACHIEVED BY SEALY

MAKERS OF THE
NATION'S FINEST BEDDING
FOR 55 YEARS

Unequaled opportunity for you to invest in perfect sleeping comfort. Buy NOW at this great saving!

These Distinctive Features
Identify the Value and Quality

High grade, finely woven covering made water repellent by Sealy's exclusive process.
Beautiful Paisley Pattern.
Vertical stitched quilted border—heavy seal quilted pads.
Hundreds of electrically tempered spring coils cushioned in many layers of cloud-like cotton felt.
Hardened steel border wire top and bottom—New patented cord handles—Embossed button tufted in harmonizing colors.
Hand upholstered by Sealy-trained craftsmen.

• BOX SPRING

Perfect foundation for your Inner-Spring Mattress.
Companionate covering and colors.

Extended Payment
TERMS

STAR Department Store

Sartori and Post
TORRANCE

Phone 625

CORNEED BEEF 2 12-oz. cans 33¢ SALMON CHOICE QUALITY PINK HAPPY-VALE BRAND No. 1 can 10¢

Libby's fancy grade. All lean meat. For sandwiches, hash or with cabbage.

Stokely's Kidney Beans	No. 2 10c	Sugar Extra Fine Granulated	10 pound bag 48c
Stokely's Cut Green Beans	No. 2 25c	Stokely's Peaches	Finest quality No. 2 15c
Del Maiz Niblets	12-oz. 15c	Short Cake Peaches	Stokely's 24-oz. 15c
Standard Pack Corn	No. 2 10c	Cherries	Royal Ann Variety All Good Brand 2-oz. cans 13c
Libby Pumpkin	No. 2 10c	Tropical Mince Meat	3-oz. jars 25c
Standard Tomatoes	Purse-style No. 2 9c	Mayonnaise	NuMade Brand pint 22c
Stokely's Tomato Juice	No. 2 8c	Peanut Butter	Beverly Brand 2-oz. 1-pound jar 33c
Stokely Tomato Catsup	14-ounce bottle 12c	Libby Red Salmon	Choice grade No. 1 size tall can 19c
Tomato Sauce	Del Monte Brand Spanish style 8-oz. cans 11c	Mission Tuna	Choice grade No. 1 size tall can 35c
Hy-Pro Bleach	half-gallon size bottle 15c	Max-i-mum Milk	Evaporated Condensed 3 tall cans 19c
Favorite Matches	caption of 10c 10c	Flour	Harvest Blossom Blend No. 5 bag, 20-25 lb. bag 80c
Strongheart Dog Food	3 1-lb. cans 13c	Kitchen Craft	Hard Wheat Flour No. 10 bag, 50c sack \$1.15
Kennel King	3 1-lb. cans 20c	Gold Medal Flour	No. 10 bag, 50c sack \$1.15

MEATS OF QUALITY

Appoint the meat man in your neighborhood Safeway store to be YOUR butcher and be sure of the finest quality meats at all times. Trained meat buyers select the best available beef, pork, veal, lamb, etc., for sale in Safeway markets. Trained meat cutters, working with modern equipment, serve you with efficiency and courtesy. Try Safeway meats this week. Your satisfaction is guaranteed.

STEAKS

Assorted steaks, featured in a big Steak Sale. From Safeway Guaranteed Beef.

GROUND BEEF FRESHLY GROUND	Lean, tender beef, freshly ground. Packed in Viking.	lb. 16c
BEEF ROAST CENTER CUT CHUCK	Center cut chuck roast. From Safeway Guaranteed Beef.	lb. 18c
PRIME RIB ROAST	Fancy beef roast. Serve up for your Sunday dinner.	lb. 29c
BONELESS ROAST	Boneless shoulder clad roast of Safeway Guaranteed Beef.	lb. 28c
LAMB LEGS FANCY GRADE MILK LAMB	Lamb is an ideal winter meat dish. Order a leg at Safeway.	lb. 25c
COLORED HENS DRY PICKED	Fancy grade, dry-picked, milk-fed colored hens. To fricassee.	lb. 27c

AVOCADOS Large size Puerto Variety avocados. Guaranteed free from rot.	each 6c	APPLES Fancy quality, crisp, juicy Washington grown winter apples. A real value.	5 lbs. 25c
CABBAGE Firm, solid heads of crisp cabbage. Excellent cooked with steam-heats.	lb. 2c	STRING BEANS Young, tender, green beans. Snap easily; practically stringless. Order a supply today.	lb. 15c

SAFEGWAY

PRICES EFFECTIVE THROUGH SATURDAY, FEBRUARY 6, IN SAFEGWAY-OPERATED DEPARTMENTS OF STORES WITHIN THIRTY-FIVE MILES OF LOS ANGELES.

FLOODS, FREEZES AND STRIKES

Floods, freezes, and labor difficulties usually have vast economic effects. It seems certain to us that the present major disturbances in the production and distribution of merchandise MUST bring about extensive rises in food prices. Already, notices have been received from some manufacturers and canners that reorders of foodstuffs will be at new higher levels of cost. But Safeway has well stocked warehouses; acres of floor space filled with foods of all kinds. Thousands of dollars worth of foods are on hand that were bought at reasonable prices. Safeway's selling prices on these goods are being held down as long as possible. But even our quantities are limited. Retail price advances seem inevitable. Our advice, and we believe it to be sound, is to invest in canned foods now. Stock up! Today at the low prices available in your neighborhood Safeway.

Safeway's selling prices on these goods are being held down as long as possible. But even our quantities are limited. Retail price advances seem inevitable. Our advice, and we believe it to be sound, is to invest in canned foods now. Stock up! Today at the low prices available in your neighborhood Safeway.

MONEY-SAVING VALUES

Sun Maid Raisins	2 15-oz. boxes 17c
Jell-O Assorted flavors	3 pkgs. for 14c
Stokely's Asparagus	15c
All green. Picnic size can	
Val Vita Lima Beans	6c
Dried, cooked, 15-ounce can	
S-Y Green Chilis	2 4-oz. cans 15c
Nature's Gift Peas	No. 2 15c
Dried and cooked	
Del Monte Spinach	13c
Or Libby's No. 2 can	
Tomato Juice	5c
Stokely's 10-ounce can	
Tomato Juice	20c
Stokely's 50-ounce can	
Swans Down Cake Flour	24c
For cakes, 2 1/2-pound packages	
Giant White King 3 bars	12c
Laundry soap	
Scotch Granulated	23c
Pure soap, 35-ounce package	
Lux Toilet Soap	6c
"Soap of the Stars," Per bar	
Ivory Soap	2 bars for 11c
Medium size	

FINE GRANULATED SUGAR

Quality granulated sugar, packed in cloth or paper bag. Note price.

10-lb. paper bag
48¢