

Geographic Goes On Mexican Tour

LOS ANGELES.—Widening its scope of activities, the Pacific Geographic Society has announced a three weeks' tour of Mexico, leaving Los Angeles August 1 on a completely air-conditioned Southern Pacific train and visiting many cities and points of interest during the three weeks' journey.

The touring party will be limited to 120 persons with plans made to accommodate a few non-members on the trip.

Leaving August 4 the party will travel by way of Mazatlan, the Pacific port, and will arrive in Mexico City August 11, after stopovers at Guadalajara and Cuernavaca. During the stay in Mexico City optional trips to Guatemala to visit ancient Mayan ruins and other points of interest will be afforded. The party returns to Los Angeles August 21. Information relative to this tour can be obtained from the Pacific Geographic Society, 1151 South Broadway, Los Angeles.

Half Million In Delinquent Tax

Delinquent tax collections in Los Angeles county exceeded the \$500,000 mark last month, but fell short of collections for the corresponding month of a year ago, County Auditor H. A. Payne disclosed today.

During the month just ended, 10,908 payments were made aggregating \$539,437. During May of last year, 13,842 payments were made, totaling \$1,081,524, the auditor's records showed.

Collections for the fiscal year to date are approximately \$400,000 ahead of the amount paid in for the corresponding period a year ago, however, T. E. Tanner, chief of the redemption division of the auditor's office, explained that last year there was a larger carry-over of delinquency when the second installment tax deadline passed on April 20, 1934, as compared to this year.

Read Our Want Ads!

"May I Help You?"



This smiling saleslady typifies the gracious and pleasant service offered at Van de Kamp's bakery which opens at 1325 Sartori avenue, in Torrance, this Friday. Dressed in spic-and-span blue and white Dutch costumes, these Van de Kamp salesladies are known far and wide for their courteous and intelligent attention to the needs of customers.

Eyes Mexico



Gen. Fausto Topete, ex-governor of Sonora, Mexico, and a leader in the revolution of 1929, watches with interest the present crisis in Mexico. He is a political refugee in Los Angeles.

Hospital Notes

Miss Jennie Cox, 510 1/2 South Catalina, Redondo Beach, underwent an operation June 17.

Mrs. Marion Jensen, 219 Topuz, Redondo Beach, is recovering from an operation performed June 17.

Clarence Richardson, 714 Columbia Court, was operated for the removal of appendix, June 14.

Dave Williams, Rio Tan Hotel, is recovering from an attack of pneumonia.

Births

Mr. and Mrs. Gideon Bonkrude, 15905 Menlo, Gardena, a boy, June 17.

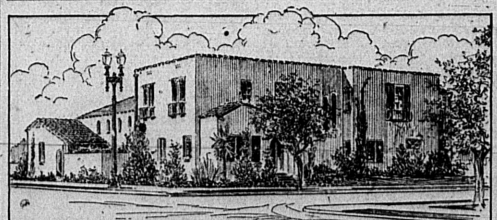
MARRIED WOMEN

Don't worry over tardy & delayed periods

ROYAL PRESCRIPTION CAPSULES

Safe, reliable, convenient. For delayed menstruation as a result of exposure to inclement weather, fatigue, grief, or other emotional stress. Price \$2.00.

ACCEPT NO SUBSTITUTE
DOLLEY DRUG CO.
El Prado and Sartori Ave.



STONE and MYERS Funeral Directors

Licensed Embalmers

TORRANCE: Cravens at Engracia Telephone 195
LOMITA: 1204 Narbonne Ave. Telephone 347
AMBULANCE SERVICE



With Which Is Consolidated the Lomita News
Published Every Thursday
GROVER C. WHYTE, Editor-Publisher
1336 El Prado, Telephone Torrance 444
Torrance, California

MEMBER
California
Newspaper
Publishers
Association



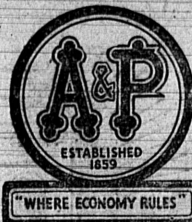
MEMBER
United
Press
Associations

Published weekly at Torrance, California, and entered as second class matter January 30, 1914, at the Postoffice at Torrance, California, under the Act of March 3, 1879.

OFFICIAL PAPER OF THE CITY OF TORRANCE
Adjudicated a Legal Newspaper of Los Angeles County, Superior Court Case No. 218470, Dated March 23, 1927.

Subscription Rates In Advance

Anywhere in Los Angeles County—\$2.00 per year
Anywhere in the U. S. Outside of Los Angeles County—\$3.00 per year
Canada and Other Foreign Countries—\$6.00 per year
Single Copies—\$6.00 per year



By Special Request, AGAIN WE OFFER:

EIGHT O'CLOCK COFFEE 15¢ lb.

3-lb. Bag 44¢

"THE WORLD'S LARGEST SELLING BRAND OF COFFEE"

N. R. A. Wages and Working Hours Still in Effect at All A & P Food Stores

FLOUR Pillsbury's Best 10-lb. Sack, 40c	24 1/2-lb. sack	90¢	FANCY PEAS Reliable Sweet	No. 2 can	10¢
SPINACH DEL MONTE GARDEN	No. 2 1/2 can	10¢	CHOCOLATE Ghirardelli's Ground	1-lb. can	25¢
SALMON COLD STREAM PINK	No. 1 can	10¢	SHORTENING FORMAY	1-lb. can	18¢
BRILLO CLEANSER, SCOURS, & POLISHES. 25c size pkg.—12c	15c size pkg.	7¢	CRYSTAL WHITE Soap Chips	5-lb. pkg.	29¢
GINGER ALE CLICQUOT CLUB	16-oz. bottle	9¢	PUREX Master Bleach and Water Softener	1/2-gal. bottle	15¢
PABST-ETT CHEESE Plain or Pimiento	2-pkg.	25¢	CRACKER JACK	3-pkg.	10¢
FREE! CALUMET BISCUIT PAN WITH ONE 1-lb. can Calumet Baking Powder		21¢	TOMATO JUICE Calif. Home	3 cans	17¢
KETCHUP HEINZ TOMATO	14-oz. bottle	18¢	RICE FLAKES HEINZ	pkg.	10¢
CHILI SAUCE HEINZ	12-oz. bottle	23¢	MACARONI HEINZ	17-oz. can	12 1/2¢
HEINZ SOUPS Assorted large can		12 1/2¢	PEACHES IONA HALVES	No 2 1/2 can	13¢
BAKED BEANS HEINZ	can	7 1/2¢	MAYONNAISE Best Foods Qt. jar 45c	jar	27¢
SPAGHETTI HEINZ	13 1/2-oz. can	9¢	NEW NUCOA BEST FOODS	lb.	19¢
COFFEE DEL MONTE "ORTHO-CUT"	1-lb. can	25¢	TOMATOES Coronado Solid Pack	3 8-oz. cans	13¢
DRESSING RAJAH SALAD	quart jar	34¢	P-NUT BUTTER SULTANA	2-lb. jar	35¢
MALTED MILK Thompson's 1-lb. Shaker Free! can		39¢	PINEAPPLE TID BITS Del Monte	8-oz. can	7¢
CORNER BEEF ARMOUR'S	12-oz. can	12 1/2¢	APPLESAUCE FANCY N. Y. State	No. 2 can	10¢
ASPARAGUS TIPS No. 1 DOMINO	sq. can	17¢	NECTAR TEA ORANGE PEKOE	1/2-lb. pkg.	25¢
PUFFED RICE QUAKER	pkg.	10¢	MATCHES BIRDSEYE	3 boxes	13¢
MAZDA LAMPS 25-40-60 Watt G. E.	each	15¢	CHOCOLATE HERSHEY BAKING	1/2-lb. cake	12¢
SARDINES BLUE PETER	No. 1/4 can	9¢	MARGARINE NUTLEY	lb.	12 1/2¢
MARMALADE King Kelly Orange	1-lb. jar	15¢	SAUERKRAUT Hamilton's	No. 2 can	8¢
PRESERVES Ann Page Pure	1-lb. jar	18¢	WINES SIERRA CALIFORNIA Port, Sherry, Angelica, Muscatel, Sauterne or Burgundy—fifth 29c	qts.	39¢
PURE HONEY	5-lb. pail	43¢	SNOWFLAKES Uneda Bakers	1-lb. pkg.	16¢

A & P Highest Quality Meats

SWIFT'S PREMIUM "OVENIZED" OR CUDAHY'S PURITAN FANCY EASTERN		
HAMS WHOLE or FULL HALF	lb.	25¢
GENUINE 1935 SPRING BABY MILK		
LAMB SHOULDER ROAST	lb.	16¢
SMALL RIB CHOPS, lb. 27c	LARGE RIB CHOPS, lb. 19c	
SWIFT'S SUGAR-CURED		
EASTERN BACON BY THE PIECE	lb.	33¢
SWIFT'S		
SHORTENING BULK	lb.	10¢
FANCY EASTERN GRAIN-FED "BRANDED" BEEF		
CHUCK ROAST CENTER CUT	lb.	17 1/2¢
FANCY EASTERN GRAIN-FED "BRANDED" BEEF		
RUMP ROAST	lb.	25¢
FRESH LEAN		
GROUND BEEF	lb.	15¢
PLATE RIB		
BOILING BEEF	lb.	9¢
FANCY EASTERN GRAIN-FED "BRANDED" BEEF		
ROASTS Pot Roast RIB ROAST	lb.	14¢
SWIFT'S PREMIUM or SUNNYFIELD FANCY EASTERN		
BACON SLICED 1/2-lb. Pkg.		17 1/2¢

Fresh Fruits and Vegetables

DELICIOUS RIPE		
YOUNG BERRIES	3 boxes	10¢
RIPE JUMBO		
CANTALOUPE	each	5¢
RED-RIPE		
WATERMELONS	lb.	1 1/4¢
SWEET		
APRICOTS	6 lbs.	25¢
FRESH WHITE		
CELERY	LARGE STALK	5¢
SHAFTER WHITE ROSE		
NEW POTATOES	10 lbs.	10¢
	100-Pound Sack—	95c

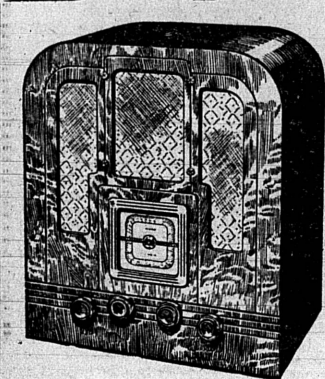
PRICES EFFECTIVE THURSDAY, FRIDAY, SATURDAY, JUNE 20, 21, & 22—1935

Established 1859 A & P FOOD STORES Established 1859

The World's Leading Food Merchants

1319 SARTORI AVENUE, TORRANCE

It's EASY



TO OWN A GENERAL ELECTRIC WORLD WIDE RADIO!

This Model Was \$39.95
Now \$29.95
Easy Terms

Astounding performance! Long- and short-wave—around the world. Beautiful cabinets—latest G-E circuit and tubes

Take Advantage of the

Greatly Reduced Prices

On Brand New 1935

General Electric Radios

We are offering beginning this week. It's your chance to save and get the BEST. Your satisfaction guaranteed by Gene DeBra, technician in charge of our radio department.

Terms and Liberal Trade-In

Torrance Furniture Co.

SAM LEVY, Proprietor

1334 El Prado

Phone 37-W

Round-Up Sale of Better Used Cars!

Each month we take a stock of every car on the floor, and every month we announce a BIG CLEARANCE SALE. This month is no exception, unless the cars we offer are bigger values than ever. See for yourself—we'll let you be the judge. Take one out on trial—learn what we mean by BIG VALUES.

EVERY PRICE SLASHED

1934 FORD V-8 COUPE

A sensational cut. This car would pass for new, it is so clean. Tires, upholstery, paint and motor perfect.
Friday only..... \$545

1930 PACKARD SEDAN

An exceptionally clean, six-wheel job, and thoroughly overhauled for only..... \$445

1930 FORD TUDOR

You could travel a long way before you would find another bargain to equal this. Friday and Saturday only..... \$220

1928 HUDSON SEDAN

All new rubber and a big bargain at only..... \$85

1929 FORD TUDOR

Late model. Two new tires. Like all our guaranteed cars, the motor is perfect..... \$185

1930 DE SOTO SEDAN

New gun-metal finish. A car that should bring..... \$295

1932 FORD V-8 COUPE

This should be one of the first to go as it is about \$75 below the market.
Saturday only..... \$295

1930 CHEVROLET PANEL TRUCK

A splendid delivery. In fine shape and guaranteed..... \$265

1931 FORD COUPE

Clean as a pin from stem to stern. New tires, bright new paint, perfect mechanically.
Friday and Saturday only..... \$275

1929 CHEVROLET COUPE

Economical in operation. Clean and ready to go..... \$175

1930 FORD COUPE

Late model. Has '31 features. Just what you want, and try to duplicate the low price.
Friday and Saturday only..... \$245

1930 BUICK VICTORIA

New tires, new paint. Perfect in all respects..... \$335

Walter G. Linch

312 So. Catalina

Redondo Beach

DODGE Open Evenings and Sundays

PLYMOUTH