

SAM LEVY

1311-1313 Sartori—Torrance

Miss Simplicity

By GODDARD

Foundation Garments

Whatever your figure trouble, there is a Miss Simplicity Corset to correct it. Our new stock for Spring is here and is well worth your inspection.

\$3.95 and \$4.95

Girdles

That Are Sure to Please
\$1.50 AND UP

ALL LACE Brassieres

By Goddard
Very Special 39c

Brighten Up That Dress . . .

With a Smart New

Collar and Cuff Set of Organdie, or Organdie and Flque

75c and \$1.00

YOU'LL GET A THRILL WHEN YOU SEE THE

New Candy Colors

HOLEPROOF HOSIERY

For Spring and Summer They Harmonize Perfectly with the New Costume Colors

\$1.00 PAIR

LOOK! These Are Underpriced A Dollar a Pair!

FAMOUS BROWN-BILT

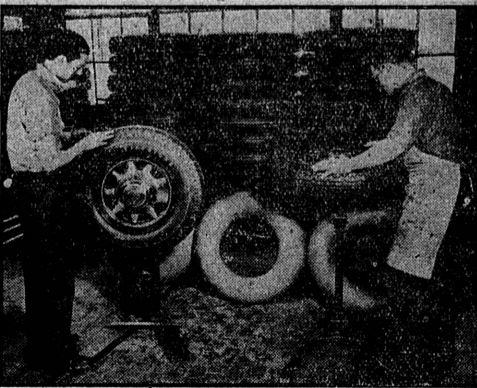
White Sport Oxfords and Straps

of Pure White Elk—Smart Styles

Sizes 9 to 12 Very Special \$1.95

Brown-Bilt Black Patent STRAPS—Sizes 5 1/2 to 12 \$1.95

Offer Two Days Free Trial Of New Air Balloon Tires



Balancing, a new feature of the Firestone Air Balloons, that stops shimmy completely and makes steering much easier, is shown above.

An entirely new plan of selling the new Firestone Balanced Air Balloons has been announced by the manager of the local Firestone Service Stores, Inc., Douglas Collins.

His firm is offering a two-day free trial of the new sets on a prospective buyer own car. The plan allows the buyer to drive around for two days and try the tires under any and all conditions and if he does not find them to be the safest, most comfortable, and smartest appearing of any type of equipment, he may return them and have his old equipment remounted without any obligation or charges.

The demonstrations are being used for a limited time to acquaint car owners of the many advanced features of the new Fire-

stone Balanced Units. It is claimed that the advanced features such as balancing of these low pressure tires are the most startling features of the development since H. S. Firestone marketed the original balloon tire in 1928.

Balancing is accomplished on scientific machinery and requires expert workmanship to be properly handled. Shimmy is completely eliminated and steering made much easier because of this new feature, which is used exclusively with Firestone Air Balloons.

"A large shipment of the Balanced Units has just been received with wheels in spoke or wire type in an array of colors to match any car, and we expect no difficulty in furnishing demonstration sets," Mr. Collins said.

Exceptionally Low Carrying Charges Offered On Frigidaire By Star Furniture Company Here

Exceptional savings to purchasers of Frigidaire electrical refrigerators is offered by the Star Furniture Company, 1273 Sartori avenue, through a new low interest rate on carrying charges, which has just been put into effect.

"The usual carrying charge amounts to 12 per cent per

annum and upward, but by financing our own contracts, we are able to permit our patrons to buy the new 1934 Frigidaires at 6 per cent per annum." H. M. Abramson, manager of the local Star Furniture store stated. "A comparison of carrying charges required anywhere else in Southern California will readily convince purchasers of the worthwhile savings offered by our plan." Mr. Abramson said. By financing their own contracts and thus eliminating the profits usually charged by finance companies, the Star Furniture Company is able to offer patrons this truly worthwhile saving. A special Spring display of 1934 Frigidaires is being featured by the Star Furniture Company, and one of the most popular models will be given away at the Safeway Stores Cooking School Friday. Mrs. Edith Jeffers Freeman, noted home economist in charge at the cooking school, recommends the Frigidaire and is using one of the late models on the stage at the Torrance Theatre this week.

Public Schools Week Program At Narbonne Friday

Tomorrow evening, April 27, residents of Lomita, Harbor City and neighboring communities will assemble at Narbonne high school to hear a program arranged in observance of Public Schools Week. Mickey Malkorn, former student at Narbonne, now enrolled at Loyola University will be the principal speaker. Musical and other entertainment will be supplied by pupils of the Lomita schools. Admission is free and all are invited to attend.

Keeping Up With Torrance High

To award medals to members of Torrance's winning track team and encourage attendance at the Marine League Finals at Lexington Friday, a special assembly was called Thursday, April 19. Coach Donahue spoke on the outstanding work the track team has done this year and awarded the medals. Boys receiving medals were Hubert Luck, Louis Zamperini, Bob Wertz, Johnny McFadden, George Isbell and Billy Acree.

After several weeks of preparation the school finals of the annual World Friendship oratorical contest were held last week. Alice Burger took first place; Earl Smith, second; and Ella Levy, third. Alice Burger was also the winner last year.

A number of students in the music appreciation class and Mrs. Elschen, music teacher, attended the opera Carmen at the Shrine Auditorium, Friday, April 13. The students who went are Mary Mathews, Frances Mowry and Raymond Tucker.

Young Boy Held In Theft Case

H. L. Garland, 1027 Amargosa, recently reported to Torrance police the theft of a Luger automatic pistol and a Krag-Jorgensen rifle, taken from his home. After a quiet investigation the police this morning took into custody a juvenile of Torrance, who it is alleged had sold the weapons for \$150. He was held at the jail until the arrival of juvenile court authorities who will handle the case.

More Than Quarter Million On Los Angeles County Relief Lists

More than a quarter of a million persons are still on the relief lists of Los Angeles county, and more are being added as the CWA work has been withdrawn and the substitute programs offered by FERA and SERA have not yet begun to function.

In order to relieve the burden caused by this enormous amount of relief work the county is conducting a campaign among employers, trying to induce them to hire a portion of their employees from the county lists.

W. Rufus Page is the county representative for this endeavor in this district, and while he has had some success, the conditions are still hard and employment scarce. There are several causes for the extremely large number of men and women unemployed in and being partially or wholly supported by the taxpayers of Los Angeles county, any one of which would have caused a great deal of unemployment, but when combined they make this problem colossal.

1. According to the U. S. census of manufacturers report covering the period from 1919 to 1929, the first cause commenced in 1919 and ended in 1929, which was the beginning of the terrific depression we have been going through. During this period the value of our manufactured products here in Los Angeles county increased \$902,000,000, or \$305,000,000 more than any other county in the United States. This increase in Los Angeles county alone was more than any state in the United States, with the exception of Michigan with an increase of \$1,170,000,000; California with an increase of \$1,240,000,000; and New York State with an increase of \$1,130,000,000. To produce this increase of nearly one billion dollars, it was necessary to have thousands upon thousands of new employees, who came from all over the United States and have made their homes here and many of them paid taxes to support the local, county, state and federal governments.

2. The second period of time from 1930 to 1932, one of the world's greatest oil drilling and production developments took place here in Los Angeles county, resulting in the erection of large refineries, pipe lines, reservoirs, tank farms, etc., requiring many thousands of additional workmen who came from all parts of the nation and brought their families here to live and make their homes. The combination of the two foregoing causes resulted in the greatest building and paying program the world has ever known and many additional thousands came to do the work and make their homes in Los Angeles county.

3. Many good people who retired and came to Los Angeles county to live in peace and comfort for the remainder of their lives had investments in places where they lived and in many cases the depression destroyed their income and sometimes their entire investments and they had to call on the taxpayers of the county for assistance. Now in the latter part of 1929 when the depression began, growth and development came almost to

information. They watch for new factories and expansions in the old. These committee men work with these offices in these communities and do everything possible to promote the welfare of the county. All we need now to completely solve the problem of unemployment in Los Angeles county is more business and greater growth and development. In addition to the campaign of the charities department to secure employment for men the county is also conducting a program of rehabilitation through its community gardens. This year it is hoped to have 10,000 families working in these gardens and becoming at least self-supporting. The gardens program of last year established the fact that this sort of work contributes greatly to the return of self-confidence and self respect. At the same time it effects great economies in that it costs much less to carry on the garden program than it does to give the families vegetables which the county must purchase.

This year also the department is energetically pushing a repatriation campaign and hopes to induce several thousand Mexican families to return home. In this connection the work of the department is somewhat handicapped by the fact that no Mexican can be repatriated unless he volunteers.

Hawthorne Hospital Put On County List

The Hawthorne hospital, 711 Sausal street, Hawthorne, is authorized in emergency to care for county patients for the General hospital, by virtue of a contract signed this week with approval of the board of supervisors. Patients may be placed in the hospital upon order of the General hospital superintendent.

Read Our Want Ads!

Combined Glee Clubs Will Sing

Next Sunday evening, April 29, the people of Torrance and vicinity will be given the privilege of hearing the combined glee clubs of California Christian College, Los Angeles, in a sacred concert at the Torrance Christian church, beginning at 7:30 o'clock.

The clubs seldom appear as a unit in concert, according to Rev. George Elder, pastor of the church. The young men and women who make up this organization, are of the highest type in character and musicianship. The best music, both classical and semi-classical, will be sung. Mr. Ray Crittenden, widely known in musical circles, is the director. A silver offering will be taken.

Caps and Gowns For Graduation

The senior class, summer 1934, numbering about 70 students, will be the second class to graduate from Torrance high school in caps and gowns. The class decided upon the costume at a recent meeting. They will be borrowed from the Redondo Union high school for use during the entire week preceding commencement.

6% Per Year Carrying Charges on Electrical Refrigerators
Star Furniture Co.
1273 Sartori Ave., Torrance

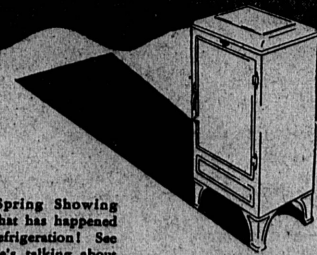
FREE! This \$124.50 Frigidaire Will Be Given Away Friday At the Safeway Stores Cooking School

But if you don't happen to be fortunate enough to win this marvelous prize tomorrow—remember, you can have one delivered to your home for a small down payment, and THE LOWEST CARRYING CHARGES IN HISTORY ON THE BALANCE.

VISIT OUR

Spring Showing

SEE THE FRIGIDAIRE '34 THAT USES LESS CURRENT THAN ONE ORDINARY LAMP BULB



\$124.50

DELIVERED & INSTALLED EASY TERMS

Visit our Spring Showing and learn what has happened in electric refrigeration! See why everyone's talking about the Frigidaire '34.

Imagine! It has automatic defrosting... you don't have to remember to turn the current on when defrosting is completed! It has automatic ice

tray release... the trays slip out at a finger touch. Its big, gleaming interior is of Lifetime Porcelain and its outside finish is sparkling Dulux. It has extra room for tall bottles;

even a special compartment for frozen foods that must be kept frozen.

On top of all that, this Frigidaire '34 actually uses less current than one ordinary lamp bulb! Come in, today, and see why thousands of enthusiastic owners are proud to say, "Ours is a Frigidaire '34."

Lowest Carrying Charges In History

Because we finance our own contracts and do not have to pay a profit to finance companies, we are able to sell you a Frigidaire on Terms with ONLY 6% INTEREST per year, which is HALF or LESS the usual carrying charges. Compare these interest rates with those charged ANYWHERE ELSE, and you will readily see the BIG SAVINGS offered by the Star Furniture Company.

Frigidaire '34

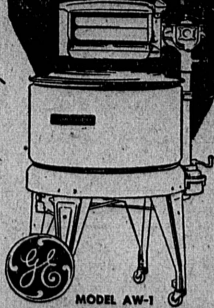
EVERY YEAR THE BEST OF THE YEAR • A PRODUCT OF GENERAL MOTORS

Star Furniture Co.

1273 Sartori Ave. Torrance Phone 620

"WE CHALLENGE CITY PRICES!"

Claims MUST BE Proved



WE CLAIM THAT THIS

GENERAL ELECTRIC WASHER

WILL

1. SAVE YOUR TIME
2. SAVE YOUR EFFORT
3. SAVE YOUR MONEY
4. SAVE YOUR CLOTHES

BUT... DON'T TAKE OUR WORD FOR IT!

FEATURES

Standard type Agitator... Lovell safety wringer... 6-pound enameled tub... Trouble-free G-E motor... Precision-fitted gears... All-rubber waterproof cord.

PROVE IT IN YOUR OWN HOME

Star Furniture Co.

1273 Sartori Ave., Torrance

PHONE 620

"WE CHALLENGE CITY PRICES!"



Our Cars will make their own Weather.

THIS SUMMER on Southern Pacific's leading flyers—the Golden State, Sunset, Overland, and Cascade Limiteds, diners, observation, club, lounge and room cars will be air-conditioned. No heat, cold, dust or noise. Filtered air, adjusted to exactly the right temperature and condition for greatest comfort. Air-conditioning, on Southern Pacific, will cost you nothing extra.

The Golden State Limited, one of the world's finest trains, is fast, direct to Chicago, with every luxury of modern travel. Former extra fare now abolished.

MAKE YOUR ROUNDTRIP ROUND—There are four famous Southern Pacific routes East. You are invited to go one way, return another.

Our exclusive Table D'Hote "Meals Select" provide finest food at lowest cost. Complete luncheons and dinners, 80c to \$1.25. Club breakfasts, 50c to 90c.

GIVE YOUR CAR A RIDE—Now with only two first-class tickets, you may check your automobile by fast freight for only 3.6c per mile additional.

LOW SUMMER FARES EAST Start May 15th

Even lower than last year to many points, 1934 summer season roundtrips will be on sale daily from May 15 to October 15, final return limit October 31. Three classes of fares. Examples of roundtrips:

	FIRST CLASS	INTERMEDIATE	COACH
Chicago	\$ 88.00	\$ 69.00	\$ 57.35
New York	\$135.15	\$124.40	\$117.95
Boston	162.25	152.45	125.95
Houston	70.45	58.40	47.90
Kansas City	75.00	57.50	48.00
New Orleans	85.15	68.15	58.90
Washington	130.45	120.75	113.25

Similar fares to all eastern cities. Also attractive roundtrip fares to Pacific Coast resorts and cities. RESERVE NOW FOR ANY DATE.

SOUTHERN PACIFIC

W. H. BRATTON, Agent, Pac. Elec. Sta. Phone Tor. 20.