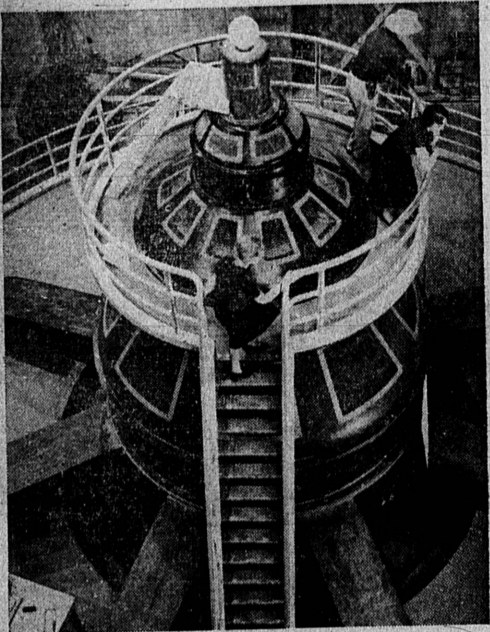


## Atop 115,000 Horses



THEY MAY NOT GALLOP but the 115,000 horsepower of this huge generator helps light the city of Los Angeles and in a few weeks three more similar units will be in operation for the Bureau of Power and Light. A Union Pacific Railroad cameraman happened along just as Deputy United States Marshall Jack Weiler, head of the Boulder Dam guides, was showing Catherine Lisenby and Marguerite Schiel the interior of the Nevada wing of the powerhouse.

## Mexican Good-will Tour Planned



Marketplace at Oaxaca, State of Oaxaca

Promotion of friendly relations between the United States and Mexico and improvement in understanding among the peoples of the two nations form the objective of the Hollywood Chamber of Commerce good-will automobile tour to Mexico City. The party is open to any congenial person who may travel either in his own

## WHAT IS HOME WITHOUT A GARDEN?

The hyacinths are one of the showiest of all spring flowering bulbs. They do not grow as tall as the tulips, nor is their coloring quite so startling, but there is so much more of it to each spike that the combined effect is even more vivid.

We have grown so used to seeing the hyacinth as a house plant to force during the winter months, we oftentimes forget that the outdoor garden is its real habitat. There it is one of the most hardy individuals, with established blooming habits and a hardy nature. It grows as early as tulips or daffodils, and has a long life.

Their stiff and formal heavy type of bloom makes them ideal material for the formal bed, although they are welcome in most any other situation. Newly planted bulbs are invariably even in stature and size, so that intricate designs may be attempted with a certainty of seeing what was visualized. After their first year of bloom they take on a different character outdoors and produce smaller and more numerous spikes of much more grace, and fewer flowers to a spike. Although spikes are not so large the second and succeeding

years, they are large enough for anybody, and certainly colorful. There is an interesting reason for this. The bulb grows pinched off all flowers immediately they open, so that all energy produced by the plant goes into the bulb growth, thereby assuring an enormous amount of food for blooms the following year.

Plant them as deeply as you would tulips. Six inches from the shoulder of the bulb is a good rule, eight or 10 inches not being excessive, only slowing up the time of bloom somewhat. As they come thru the soil very early in the spring, a light mulch of dried leaves is valuable as protection from severe cold. Do not manure the soil. They have a particular distaste for it; plant food is better if needed.

An advantage is the early ripening of foliage, which may be cleared away for other plantings. Annuals may be planted over the beds in perfect safety to themselves and the bulbs. In situations where a fine display is wanted the named varieties are best, though more expensive. Unnamed varieties are more economical, and in fine taste, for bedding, or massing.

## Yule In Hawaii 160 Years Old

HONOLULU, Dec. 22. (U.P.)—Honolulu is preparing to celebrate Christmas for the 160th time in its history. The Yuletide celebration first was observed in 1783 when the English ships "Queen Charlotte" and "King George" were anchored off the village of Waimea, on the island of Kauai, 100 miles northeast of here.

On Christmas evening, the captains ordered hymns sung and prayers offered. Gifts were

taken ashore and presented to the native boys and girls.

However, it was not until nearly three quarters of a century later that Christmas was recognized officially by the Hawaiian government. In 1849, King Kamehameha III, who had been converted to Christianity by the American missionaries, issued a special proclamation recognizing Christmas. However, he confused his dates and set the observance for Dec. 31. But the following year he corrected the error.

Since then Christmas has become a popular festival in the islands and is celebrated American fashion. Christmas trees are received by the shipload

from the Pacific northwest. To them are added holly, mistletoe, tinsel, nuts and candy canes, while carol and church singing are added to the services.

**Bolt Changes Dog's Color**  
BURNT RIVER, Ont. (U.P.)—A dog changed color during a storm here. It was grazed by a bolt of lightning, and its white fur was scorched to a dark brown.

**Grand Coulee Expands**  
GRAND COULEE, Wash. (U.P.)—Enrollment in Grand Coulee schools hit a new high mark this year with more than 1,000 pupils in attendance. Less than three years ago there was no school here at all.

**Ranchers Accept Sheepmen**  
BURNS, Ore. (U.P.)—In days past cattlemen and sheepmen were enemies. But now the stockmen get together annually in a lamb and baby beef dinner.

**Kicking Child Breaks Wrist**  
FREMONT, O. (U.P.)—Kicked by a child as she helped it try on a snow suit, Marie Bardus, a store clerk, discovered after consulting a doctor, that her left wrist was broken.

**Champion Plow Repeats**  
CORNWALL, Ont. (U.P.)—Alex Black, of Guelph, Ont., won the international plowing championship for the second time in succession.

**Let CHARLIE MITCHELL Do It!**  
R.P.M. Authorized Distributor for Standard Stations, Inc. ATLAS TIRES  
Carson and Cabrillo Phone 765

## National Home Appliance Company

• The Last Minute Gift for Father, Mother, Son or Daughter may be found at The National Home Appliance Co. • We still have Hundreds of Acceptable Items from which to choose . . . and for your convenience you may . . .

# BUY NOW and PAY NEXT YEAR

for HIM . . .

an Electric Razor



- Schick \$15
- Packard Lektro Shaver \$15
- Ray, \$10
- Nicholl Velvet Shaver \$17.50

Surprise him with an ELECTRIC RAZOR . . . the newest in Shaves! Easy terms.

for HER . . .

a SUNBEAM MIXMASTER

\$20<sup>50</sup>  
Juicer \$2.75 Extra

Also Hamilton Beach Mixer

There's nothing in the kitchen so necessary as an Electric Mixer. The new streamlined MIXMASTERS are beautiful, efficient, powerful, and, OH! . . . what labor savers. Very Easy Terms.

## GIVE ELECTRICAL Gifts



- AUTOMATIC ELECTRIC TOASTMASTER . . . \$16
- SILEX TYPE COFFEE MAKERS . . . \$1.49 up
- WAFFLE IRONS . . . \$4.50 up
- BOUDOIR LAMPS . . . \$1.00 up
- ELECTRIC PERCOLATORS . . . \$5.50 up
- COMBINATION Sandwich Grill & Waffle Iron . . . \$6.50 up

## Pyrex Gift Sets Are Always Acceptable!

Every woman needs additional baking dishes in the kitchen. This Pyrex Set, consisting of 10 pieces packed in a holiday box, will solve your gift problem, and at small cost, too. **\$2.95**

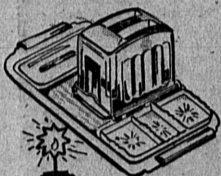
## NEW! Pyrex Top-of-the Stove Ware!

Absolutely heatproof . . . use directly over the flame and then serve in the same dish . . . 3 pieces . . . complete **\$2.65**  
with chrome handle . . . only . . .

## National Home Appliance Co.

HARRY M. ABRAMSON—"Friendly Credit"  
1318 Sartori, Torrance Phone 78

## Sunbeam Automatic TOASTER SET



A perfect gift for the home. Set includes polished Bread Board, 2 Glass Relish Dishes, and 4 Glass Serving Dishes.

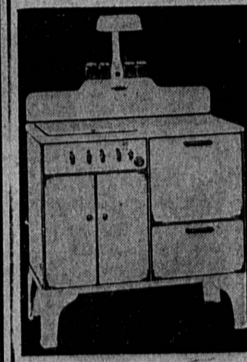
**\$16.50**  
Sunbeam Toaster Alone \$10.95

Why not give Her . . .

# BOTH an ELECTROLUX and a New 1937

GAFFERS & SATTLER

# GAS RANGE



Exceptionally Attractive Terms When You Buy Both!

How surprised . . . how thrilled she will be when she sees BOTH an Electrolux and a new Gaffers & Sattler Gas Range in her kitchen on Christmas morn. You can buy both for as little as . . . **\$4.70** Per Month

Left is a new Gaffers & Sattler Model which sells for only **\$69.50** (Lamp \$5 Extra)

## National Home Appliance Co.

HARRY M. ABRAMSON—"Friendly Credit"  
1318 Sartori Avenue, Torrance Phone 78