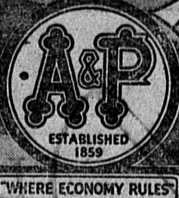


BUY WITH CONFIDENCE  **Specials for**
THURSDAY, FRIDAY AND SATURDAY, DECEMBER 17, 18 AND 19, 1936

FLAVOR-FAMED MEATS

GENUINE 1936 SPRING BABY MILK

LAMB LEGS Large Loin Chops lb. 23c 1/2 lb. **23c**
 Small Loin Chops lb. 35c

GRAIN FED "BRANDED" STEER BEEF CENTER CUT CHUCK lb. 17c	CUDAHY'S PURITAN OR SUNNYFIELD FANCY EASTERN SLICED BACON 1/2-lb. pkg. 19c
FRESH LEAN GROUND BEEF lb. 12 1/2c	PLATE RIB BOILING BEEF lb. 21c
EASTERN GRAIN-FED PORK LEG OR LOIN ROAST lb. 22 1/2c	FANCY EASTERN SUGAR-CURED BACON BY THE PIECE lb. 29c
CUDAHY'S PURITAN FANCY EASTERN HAMS 8-10-lbs. AVERAGE lb. 26 1/2c	GRAIN FED "BRANDED" STEER BEEF STEAKS ROUND OR SWISS lb. 22 1/2c

DEL MONTE SLICED PINEAPPLE No. 2 1/2 can **16c**

SHORTENING SNOWDRIFT 3-lb. can **52c**

BAKING POWDER CALUMET 1-lb. can **18c**

LUX OR LIFEBOUY SOAP 3 cakes **16c**

DEL MONTE CATSUP TOMATO 14-oz. bottle **11c**

DEL MONTE RED SALMON No. 1 can **18c**

DEL MONTE PINEAPPLE JUICE No. 2 can **10c**

CUT-RITE WAX PAPER 125-ft. roll **13c**

BREAKFAST FOOD WHEATENA CEREAL 1-lb. pkg. **19c**

MARCO "BEEF RATION" DOG FOOD 1-lb. can **51c**

SOAP PADS OR CLEANSER BRILLO 5-pad pkg. **7c**

FOR PORCELAIN & ENAMEL BAB-O CLEANER can **10c**

ASSORTED HORMEL SOUPS (ex. onion & chic. broth) 10-oz. can **12 1/2c**

SULTANA PEANUT BUTTER 2-lb. jar **28c**

DIAMOND MATCHES 3 boxes **10c**

SEQUOIA MEDIUM RIPE OLIVES 9-oz. can **10c**

BISHOP'S GROUND CHOCOLATE 1-lb. can **22c**

"APPROVED BY DOCTORS, LIKED BY BABIES" CLAPP'S BABY FOODS 3 4 1/2-oz. cans **23c**

CAMPBELL'S TOMATO JUICE 50-oz. can **19c**

DEL MONTE VACUUM PACKED KERNEL CORN 12-oz. can **11c**

SILVERBROOK FIRST QUALITY BUTTER QUARTERS lb. **36c**

SUNLIGHT LARGE U.S. EXTRAS FRESH EGGS doz. **32c**

FINE GRANULATED SUGAR PURE CANE 10-lb. paper bag **47c**

SUNNYFIELD FAMILY FLOUR 24 1/2-lb. 65c 10-lb. sack **29c**

DEL MONTE TOMATOES SOLID PACK No. 2 1/2 can **12c**

DEL MONTE SPINACH No. 2 1/2 can **11c**

DEL MONTE TOMATO SAUCE 8-oz. can **3c**

DEL MONTE FRUITS FOR SALAD 3 8-oz. cans **25c**

"THE WORLD'S LARGEST SELLING BRAND" EIGHT O'CLOCK COFFEE 2-lb. bag 55c lb. **19c**

WILLAPPOINT OYSTERS 10-oz. can **14c**

YUKON CLUB SPARKLING WATER LIME RICKEY OR GINGER ALE (plus 3 large dep.) 3 bottles **25c**

INDIA-CEYLON-JAVA OUR OWN TEA 1/2-lb. pkg. **20c**

CANNED ALE OR CANNED BEER LUCKY LAGER 3 12-oz. cans **28c**

SALAD BEN HUR MUSTARD 6-oz. jar **8c**

GOLDEN AGE MACARONI OR SPAGHETTI 1-lb. pkg. **15c**

DURKEE'S WORCESTERSHIRE SAUCE 5-oz. bottle **10c**

GOLDEN NUGGET QUICK FUDGE 12-oz. pkg. **15c**

4 POPULAR BRANDS CIGARETTES CARTON **5c**

FRESH FRUITS & VEGETABLES

SWEET JUICY NAVEL ORANGES doz. **9 1/2c**
 MEDIUM SIZE, 2 doz. 23c; LARGE SIZE, 2 doz. 29c

EMPEROR GRAPES 3 lbs. **15c** **WHITE ONIONS** 3 lbs. **10c**

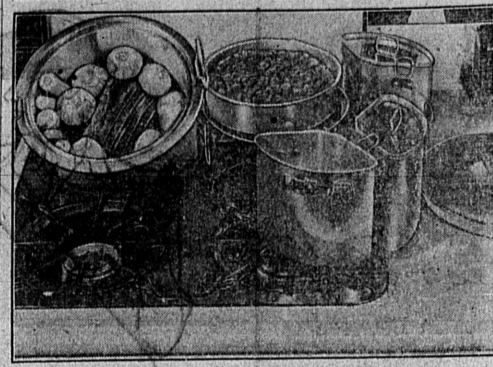
SOFT SHELL PECANS lb. **25c** **BELLFLEUR APPLES** 5 lbs. **25c**

GRANULATED SOAP WHITE KING 1-lb. pkg. **28c**

LARGE FUERTE CALAVOS ca. **10c**

A&P FOOD STORES
 THE WORLD'S LEADING FOOD MERCHANTS
 1319 SARTORI AVENUE TORRANCE

Meals Like Mother Used to Make



BACK in the darker ages when you were young, plenty of good food emerged from the old iron kettle atop the cookstove. Today the economy cooker conveniently permits the addition of dessert and cooks everything over one burner. If your modern automatic gas range lacks this type of cooker which is built into the range, a large kettle with close fitting cover having a vent in it to allow the escape of steam may be used over a top burner. The flame is reduced to a simmer once cooking begins. The dinner shown includes a three pound pot roast of beef (either chuck or rump), potatoes, whole onions and carrots, cooked with but half a cup of water; also a steamed cherry butter pudding. Shoulder or breast of real stuffed and rolled, pork, or chicken and dumplings offer variety; for dessert, try a combination of dried fruits, custard, apple sauce, or such puddings as rice, bread, molasses, chocolate or fruit.

War Vet Dies In Lomita Home

Bert Skansen Succumbs In Sleep Yesterday

A lifetime that included distinguished service in the A.E.F., and Army of Occupation in Germany, came to sudden end yesterday morning when Bert J. Skansen, of 2344 Roosevelt highway, succumbed. His body was found in bed by a neighbor at 10:30 a. m. Death, according to the report of sheriff's officers, was probably caused by chronic heart disease from which Mr. Skansen had suffered for several years. He was close to 50 years of age. He was recently a patient at the General Hospital and veterans' hospital in Sawtelle. Mr. Skansen was wounded in the World War but recovered to march into Germany following the armistice. He remained in Germany and France following demobilization and did not return to this country until about five years ago. The veteran is survived by his mother, Mrs. Lena Skansen, 2054 West 242nd street, and two brothers, Clyde and Norman Skansen. Funeral service will be held at the A. M. Gamby Mortuary tomorrow (Friday) morning at 10 o'clock with the American Legion in full charge of the military rites. Interment will be at the national cemetery in Sawtelle.

LEVY WINS HERALD TROPHY FOR WINDOWS

Continued from Page 1

The judges' decision was made known to The Herald, Grover C. Whyte, editor-publisher, presented Levy with the 16-inch gold award which is now on display in the popular merchant's prize-winning window. But the Long Beach experts' report to The Herald did not stop with naming the trophy-winner. It gave honorable mention to the Star Department store, especially commending that firm's model kitchen window; to Harriett Leech, Flowers, whose beautiful display was found notable for its original selling qualities. One judge expressed this comment: "Mrs. Leech was too unselfish." Another honorable mention went to Ed Schwartz for his contribution to window-display art. Use City As Model Recognition was also given the Torrance Investment Company's novel exhibit. The judges declared that the effort shown in making the most of small window space there was unique in real estate office interest in a city-wide Yuletide decoration plan because such business firms rarely take the time or make the effort to cooperate. In completing their assignment, the Long Beach trio received a suggestion for their own city from the Torrance street decorations. They announced that they were going to propose use of stringer colored lights in Long Beach at the meeting of their advertising club this week. The visitors asserted that the Torrance display, made possible by the Torrance Retail Merchants' Association, was superior to the Long Beach street decorations in many respects.

Better Times Sign: Courts Swamped With Lawsuits

Financial conditions in Los Angeles county are rapidly improving, as proved by reports to the judicial council of the state that more persons are indulging in the expense of quarreling. More lawsuits are now awaiting trial in the superior court than have been in four years, Presiding Judge Fletcher Bowen stated in the report, which showed a total of 1,773 cases ready for hearing Dec. 1. During the depths of the depression, this number dropped as low as 400 cases. Improved business conditions are given as the controlling influence in the rapid increase in court work, with the number of civil suits filed steadily mounting the report showed. In addition, analysis disclosed that the type of litigation filed now is in the main of a much more serious nature, involving larger amounts, than in the past few years.

Torrance Herald
 And The Lomita News
 Published Every Thursday
 Grover C. Whyte
 Editor-Publisher
 1336 El Prado, Phone 444
 Torrance, Calif.

Entered as second class matter January 30, 1914, at post office, Torrance, Calif., under Act of March 3, 1897.

Official Newspaper of City of Torrance

Adjudicated a Legal Newspaper By Superior Court, Los Angeles County.

Four Yule Weddings Are Being Planned

Notices of intention to marry were on file with the county clerk in Los Angeles this week on behalf of the following residents: George S. Schlemmer, 26, of the U. S. S. West Virginia, and Helen L. Eder, 18, of the El Prado Apartments, Torrance. Eugene G. Riley, 23, of Route 1, Torrance, and Annie B. Nichols, 19, of Inglewood. Sherrell E. Beadle, 21, of 1514 Madrid avenue, Torrance, and Frances White, 17, of 21222 Western avenue, Torrance. William H. Griffith, Jr., 21, of Lynwood, and Wilton Henry, 18, of 728 Border avenue, Torrance.

Aged Harbor City Resident Succumbs

John Edwin Clark, a resident of Harbor City at 1517 23rd street for 19 years, passed away Monday after a long illness. He was nearing his 73rd birthday. Mr. Clark is survived by his wife, Mary, and a sister-in-law, Mrs. Preston, Harbor City post master. The funeral will be held Saturday afternoon at 2 o'clock at Stone & Myers' chapel, with Rev. Ben Lingenfelter, life-long friend of the family, officiating. Interment will be at Roosevelt Memorial park.

STILL AT HOSPITAL

Mrs. Lela Ganner of 18002 Prairie avenue, is still undergoing medical treatment at Jared Sidney Memorial hospital where she was received Nov. 29.

PAIR RECOVERING

Two patients recovering from fractured hips are still confined at Jared Sidney Torrance Memorial hospital. They are Mrs. Susan Adair, Manhattan Beach nurse, who was received Nov. 11 and Cyrus Baldriok, Gardena, who entered Dec. 3.

FILE PETITION

A petition signed by 87 names, urging that A. J. Hopkins be employed "four or five days weekly on city projects" was filed by the city council Tuesday afternoon after being read at an adjourned meeting.

TO REPAIR ROOM

An allocation of not to exceed \$50 for the Walteria Recreation department which will be used to repair a small ante-room was approved by the city council at an adjourned meeting Tuesday afternoon.

ASSOCIATED S A GROCERS
 INDIVIDUALLY OWNED STORES

SPECIALS for FRIDAY, SATURDAY, DEC. 18, 19

VERMONT MAID SYRUP 12-oz. 19c 26-oz. 37c	GARDEN PATCH PEAS Green Giant—17-oz. can 2 for 25c
WOOD'S QUALITY MACKEREL As Good as Tuna—1/2 cans 2 for 25c	THRIFTEE Sa'ad Dressing Pts. 17c Qts. 28c

XMAS TREES SELECT YOURS NOW
 WELL SHAPED TREES — ALL SIZES

SPERRY'S Pancake Flour Small 10c 28-oz. 17c	SOFTASILK CAKE FLOUR 25c
--	--

ORDER YOUR XMAS POULTRY Now!
 Choice TURKEYS, CHICKENS, DUCKS, RABBITS

WHEATIES 2 pkgs. 21c 1 Balloon FREE	POPCORN JOLLY TIME or T 'N T 15c
GEBHARDT TAMALES No. 2 19c	FOR YOUR Holiday Baking & Candy Making Citron, Orange, Lemon, Mixed, Pineapple and Cherries
Chili Con Carne with Beans No. 1 can 12c	SCOTTISSUE 3 for 20c WALDORF 2 for 9c
Chili Powder 1 ounce 12c	BLACK SWAN—No. 1 Can

FRUIT COCKTAIL 2 for 25c

CHRISTMAS PACKAGES
 in attractive Holiday Wrappings
 Xmas Candy, Cigars, Cigarettes
 Mixed Nuts and Candies, Tangerines
 Chocolate Covered Cherries

Your Associated Grocers

GEO. H. COLBURN
 645 Sartori Ave., Torrance, Phone 622

RICHARD COLBURN
 1801 Cabrillo Ave., Torrance, Phone 110

DOAN'S MARKET
 2223 Torrance Blvd., Torrance, Phone 486

ORDER NOW!

For Christmas!

As always, Grubb's will have the finest Turkeys and other Poultry for Christmas. Discriminating buyers will appreciate the quality of our birds... every one the choicest available.

PLACE YOUR ORDER NOW

GRUBB'S MARKET
 CHOICE MEATS
 PHONE 779 TORRANCE
 IN SAFEWAY STORE 1929 CARSON ST.