

ABSENT FROM CITY
Councilman Tom McGuire missed his second city board session Tuesday night as he is still out of the city on a holiday trip to Chicago.

"Light" Fact

SEWING IS EYESIGHT'S WORST ENEMY



"SEWING certainly makes my eyes tired," you may say at the end of an evening's work.

But perhaps the fault is not with the sewing, but with the light you had while you were doing it. Because sewing involves close seeing, frequently with little contrast between the thread and the material, you need lots of light. You will find sewing, darning, embroidering and the like much easier in adequate light. You can work faster, too...and what is just as important, you don't use up so much energy.

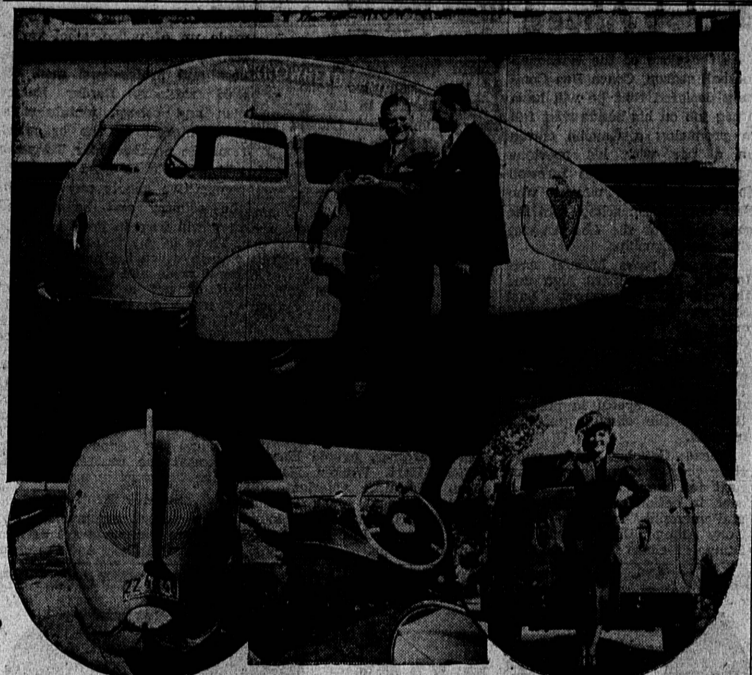
FREE LIGHTING ADVISORY SERVICE...

If you would like assistance on any lighting problem, call your nearest Edison office and a lighting expert will call on you.

SOUTHERN CALIFORNIA EDISON COMPANY LTD



Tear-Drop Car of 1960



America's first truly 100% streamlined car has just been completed in Los Angeles at a cost of \$8000. Top view shows John McNiven (at left) general manager and director of the Arrowhead Spring Water Company, explaining features to George Bowersox, assistant manager. It will be used for exhibition purposes and will soon be shown in this city by the local distributors of Arrowhead water.

SCHOOL BOARD STUDIES PLEA FOR SIDEWALKS

According to a letter received this week by City Engineer Frank R. Leonard, the matter of the Fern Avenue School P. T. A. request for sidewalks on Fern and Elm avenues (transmitted to the Los Angeles Board of Education by the council two weeks ago) has been referred to the business manager and architect of the school system for investigation and report. The P. T. A.'s request was sent on to the school board because the board owns the property in question and any improvement will have to be done at the school system's request. The cost will then be borne by the board of education.

Car Thefts Are Being Curtailed

Nearly every 30 minutes, a stolen automobile is recovered in California, the thieves take them at a slightly faster rate. In his report of activities for October, Director Ray Ingels of the Motor Vehicle department, advised Governor Merriam that 1,365 motor vehicles had been stolen, while 1,209 were recovered. Since the establishment of the auto theft bureau of the California Highway Patrol, the lot of automobile thieves is becoming more difficult, Ingels said, accurate records are kept by the department and with increased facilities, police throughout the state are able to secure prompt information on suspected cars.

Spectacular Car To Be Exhibited In Torrance

The car of 1960 is here. As if taken from the pages of H. G. Wells' "Things To Come," comes this amazing car. It's the shape of a tear-drop, with only three wheels. The front wheels drive the car and rear wheel steers. It accommodates three passengers with ample room to spare. Finished in magnificent aquamarine blue and chromium, the car is the height of luxury and of surpassing beauty in appearance. It cost \$8,000. It was designed by Wellington Everett Miller, who for years was a member of the designing staff of the Packard Motor Co. The car was built in Los Angeles for the bottlers of Arrowhead Spring drinking water. In the near future the local distributor of the water will exhibit the car in this city. Conventional designing was cast aside in creating the Arrowhead tear-drop car. The special-built 8-cylinder motor is in the rear, making the passenger compartment quiet and free from fumes. The instrument assembly is unlike any other car. In addition to the usual instruments will be found an airplane compass, altimeter, tachometer, grade meter, atmospheric thermometer, catalin lights, barometer and electric clock. The parking lights on the doors are made of prismatic ground to cast prismatic beams. The wheel base is 125 inches and the overall length 204 inches. Hydraulic brakes are on all three wheels. The rear wheel is suspended on a hydraulic airplane type spring. The chassis frame is 6 inch tubular steel. The fittings within the car are of ivory with colored inlay and the upholstery is buff sheepskin. The car at night is brilliantly lighted in Neon. Two horns, twin generators, oversize radiator and remote starter control are features. The owners believe this car presages the trend of designing that will be the vogue in years to come. Designed primarily for exhibition purposes this mobile tear-drop will later be used as a special delivery car.

PUNCHBOARD RACKET HIT

Sheriff's Officers Warn Against Loss
Punchboard racketeers are said to be infesting this district in increasing numbers now and because complaints have been received from county residents who have been victimized, sheriff's officers have issued warnings against this form of business. Officers at sub-station No. 3 declare that the racket has already cost its victims amounts up to \$30. They said that a salesman leaves a punchboard which calls for comparatively large cash prizes in a place of business and a few hours later one or two confederates appear and punch out all the winning numbers. One of the latest victims is Mrs. Anna Grace Clark, proprietor of a lunch stand at 13311 South Broadway, who described the salesman as being about 35 years old and the two "punchers-out" as about 45. The trio is being sought for questioning, deputy sheriffs report.

County and City Buys More Beach Front Property

Escrow instructions for the purchase by the county and Los Angeles city of approximately another mile of beach frontage several miles north of Santa Monica were being carried out this week by county attorneys, following the signing of a seven-year lease Tuesday. The supervisors, on motion of Leland M. Ford, of Santa Monica, appropriated \$246,433 for a seven-year lease with the Residential Land Corporation and in addition to this will cancel taxes amounting to some \$800,000 that would otherwise accrue to the county and the city of Los Angeles, making the total cost to the taxpayers approximately \$900,000. Action of the supervisors Tuesday was similar to that taken several days ago by the Los Angeles city council, which leased one of five parcels involved in the real estate deal, while the county leases the other four. Only one of the parcels lies within the Los Angeles city limits, it was explained.

State Finances Are Improved

Budget May Remain At 431 Millions
SACRAMENTO, Dec. 10.—(U.P.)—The state governmental budget for the next two years should be no higher than the last one, financial officials believe, and if Gov. Frank P. Merriam has any control over the situation, it will not exceed \$431,000,000. Merriam figures—and other officials agree—that if the budget does not go beyond \$431,000,000, which was the amount of the 1935-37 allowance, and the present state tax structure is not altered, there will be sufficient revenue to handle unemployment relief for another two years and to retire some of the deficit. Revenue, from all sources, has poured into the treasury during the past year at a rate considerably faster than most officials had expected. As a result, the deficit at the end of this biennium (June 30, 1937) will be approximately \$40,000,000, instead of \$75,000,000 as many had predicted.

Christmas Bargain!
Westinghouse WAFFLE IRONS
Standard Grade Regular \$6.95 Value SPECIAL \$4.68
COMPLETE WITH CORD
Equipped with Heat Indicator, . . . no more burned waffles from overheating, . . . no more sticking from under-heating. A rare gift bargain!
Torrance Electric Shop
1419 Marcelina Ave. Phone 567

Pride and Pocketbook say:
"GIVE A WESTINGHOUSE Refrigerator"
Here's a gift she'll be proud of. It will say "Merry Christmas" every day. And it pays for itself in food savings.
For the average family a nickel per person per day pays for a Westinghouse under our Easy Payment Plan.
CHOOSE HER WESTINGHOUSE NOW
from our Complete Showing. Attractive Models as low as
\$124.50
Small Down Payment and Liberal Trade-In for Your Old Refrigerator.
IT'S 10-YEAR ECONOMY THAT COUNTS
... You get it in features like these:
1 Only Westinghouse has always had hermetically-sealed Units in ALL models.
2 First to offer, on All models, Five-Year Protection Plan against service expense on sealed-in unit.
3 Exclusive fast-freezing Sanalloy Froster and Eject-o-Cube Ice Trays for plenty of ice... instant release of dry, full-size cubes.
4 Exclusive Built-in Watchman protection... ensuring continuous food protection even under unusual conditions.
5 All-steel cabinets sealed against heat and moisture... for longer life, lower cost operation, safer food storage in any climate.
6 Full-powered mechanism... to meet extreme conditions without forcing unit beyond limits of capacity.

FREE BEAUTIFUL VANITY CASE TO ANNOUNCE YOUR GIFT WESTINGHOUSE
To keep it a complete surprise until Christmas morning we will give you this handsome Vanity Case with engraved card inside announcing your gift Westinghouse and when it will be delivered. A delightful way to announce a thrilling gift.
Torrance Electric Shop
"Pioneers of Electrical Goods and Services Since 1923"
1419 Marcelina Avenue WE GIVE CHRISTMAS TREASURE HUNT TICKETS Phone 567

Gifts to make HAPPY HOMES

COMBINATION RADIO and END TABLE
Week End Special Price \$2.50
Walnut Finish with Magazine Racks

UNPAINTED DESKS
A Very Useful Xmas Gift
3-Drawer Knee Hole... \$4.95
5-Drawer Knee Hole... \$8.95
9-Drawer Knee Hole... \$12.95
Walnut Finish DESKS \$6.25, \$15.95, \$16.95

SETS OF DISHES
Service for 6 \$3.95, \$5.95
Service for 8 \$18.50, \$24.50

Used BREAKFAST SETS AT
\$2.75 \$5.50
\$6.50 \$8.50

MILLER FURNITURE COMPANY

1513 Cabrillo Phone 545
"SELL FOR LESS"

Early Californian!
Sand Bleached 4-piece BEDROOM SET \$42.95
THE PERFECT HOME GIFT—Includes Low Bed, Large Chest, Vanity with large square Mirror, Bench

TOYS
Child's Reed Rocking Chair \$1.35 - \$1.95
Special Xmas we can offer this low price.
CHILD'S BREAKFAST SET—Table and Chairs, Ivory and Maple... \$5.25
Child's Unpainted PLAY YARDS \$1.75 WITH WOOD FLOOR \$3.25
MAPLE FINISH WITH WOOD FLOOR \$5.50

SMOKING STANDS
\$1.45
\$2.45
\$5.25
\$6.75
Ideal Xmas Gift for the Men or Home

BREAKFAST SETS
Maple - Green - Ivory Some with Drop Leaf Some with Flip Leaf
\$10.95, \$11.95, \$12.95
\$13.95, \$14.95
TABLE AND 4 CHAIRS

3-Piece BEDROOM SET
Latest Design, Low Bed, Large Roomy Chest, Large 3-Drawer Dresser with Large Round Mirror—Fancy Handles. Reg. \$69.50.
SET CUT TO \$59.50

ONE ONLY SERVING TABLE
Walnut Finish, Drop Leaf, Rubber Wheels, Serving Tray, Double Electric Plugs. Very Special— \$8.50

G. P. Pays \$245,000 In County Taxes

The General Petroleum Corporation, which has a large part of its holdings in Torrance, was among the larger taxpayers whose remittances were credited on the county tax collector's books late last week as the county's larger corporations paid their first installment taxes. The remittance forwarded by General Petroleum amounted to \$245,000, according to W. A. Ashcroft, chief bookkeeper in the county tax collector's office. Taxes amounting to \$94,000 were paid by the Associated Oil Company. Your rent money will buy a home.