

Fatal Crash Ends Long Friendship

Two Die As P. E. Car Hits Auto Near Here

When Chester David Klopff of Manhattan Beach is released from Jared Sidney Torrance Memorial hospital and is able to return to his work at the Southern California Edison company's Terminal Island plant, he will ride to work alone for the first time in 12 years.

His morning and evening partner on the daily trips, William Cota, 46, of El Nido, was killed with George Henderson, 23, of Manhattan Beach, when Klopff's car was hit at the 190th street Pacific Electric crossing early Tuesday morning by a north-bound P. E. mail train.

Klopff, 45, is recovering at the hospital here from several fractured ribs, numerous cuts and bruises. He doesn't know how he escaped the same fate that befell his fellow workers. His car was tossed 50 feet by the train and young Henderson was hurled 30 feet farther north along the tracks. His neck was broken, his skull fractured. He had been riding beside Klopff, who was driving.

Mr. Cota, on the right side of the back seat of the eastbound auto where the mail train hit it, was killed instantly. His body was extricated from the wreckage. Klopff miraculously escaped with his minor injuries. Although he declares he made the crossing stop, he says he did not notice the approaching train, did not see it until he climbed out of his car's wreckage.

Roman C. Clotiaux of Los Angeles, motorman of the train, told deputy sheriffs he saw the auto stop for the crossing as he sounded his whistle. Then it appeared suddenly directly in front of his mail car. The crossing is a few feet west of Normandie avenue in the Los Angeles shoestring strip.

FLIPPING THE FILES

13 . . . 10 . . . Five and One Year Ago In Torrance This Week

Santa Fe plans huge industrial district in city and spur track south to Weston street.

Council bans boxing by women following one female fracas.

13 Years Ago Building permits in November were five times the 1922 mark.

1923 Daylight robbers snatch \$500 loot at Mrs. E. P. Young's home on Post avenue.

1926 Standard Oil leases Carson and Cabrillo corner for gas station.

1931 F. L. Parks is hero of fire at Union Tool, prevents possible electrocution of firemen.

1935 City Engineer Jessup checking petition to change Carson street from residence to business property.

1936 Herald issues extra (Nov. 29) announcing Columbia Steel corporation plans immediate construction of sheet metal mill for operation about June 1, 1927.

1936 Addition of new units reported for Derrick company.

1936 Torrance Relief Association bazaar of Christmas gifts sold out.

1936 Bill Mullin advertises he has "that new ethyl gasoline for sale."

Merchants open Yule shopping

EMERGENCY MEASURE Amendment to the state law to permit firemen employed by the various fire protection districts to be used to fight forest fires in cases of emergency will be asked at the 1937 session of the state legislature.

season with "Greater Torrance Days."

More than 600 receive approximately \$23,000 in Christmas savings checks from local banks.

5 Years Ago Rev. O. D. Wondem returns from east to resume Central church duties.

1931 Carl Paxman pitches no-hit, no-run game against San Pedro K. P. nine.

1931 Henry F. "Hank" Ulbright is elected president of Kiwanis Club.

1931 Police and fire departments hold annual benefit dance.

1931 Bruce Bilger, district manager for Standard Oil, transferred to Santa Barbara area.

1931 Torrance Relief Society announces community chest quota of \$3,000 exceeded by generous residents.

1931 Driver of first car built in U. S., believed to be Harley M. Haynes of Engracia avenue, distant relative of inventor and builder of first American motor.

1931 Tartar football squad entertained by Rotary, Kiwanis and Legion at dancing party.

1931 Two young girl shop-lifters apprehended here and released after stern lecture.

1931 Dr. Maude Wilde, state chairman of child welfare of the California Federation of Women's Clubs, addresses local club gathering.

1931 P. E. Cheerio Club host to throng at annual Christmas party.

1931 Louis Zamperini informs the American Olympic committee he favors U. S. participation in Berlin Games.

Unusual Exhibit Coming Dec. 8 To Library

"Romeo and Juliet" Panels Show Movie Research In All Phases

One of the most interesting exhibits ever to be presented in the lecture room of the Torrance public library will go on view Tuesday, Dec. 8. This will be the first showing outside of Los Angeles of 10 of the 14 panels dealing with various phases of the production of "Romeo and Juliet" by Metro-Goldwyn-Mayer.

For a long time librarians have been aware of the close alliance between libraries and films. They recognize that motion pictures have been a powerful influence in stimulating interest in the classics, biographical and historical reading.

Depicts Notable Scenes

The series of panels reveals the source material from which costumes, stage sets and properties were drawn and even the inspiration for the casting of the various parts. One deals with the workers responsible for the production, Talbot Jennings, author of the screen version of the play; Oliver Messel, English stage designer; Cedric Gibbons, who "rebuilt Verona in Hollywood"; George Cukor, director, and the late Irving G. Thalberg, producer.

Another panel illustrates the costumes and make-up used, a third is devoted to properties and sets; one illustrates how several architectural features were utilized; and others depict the treatment of highlights in the age-old romance—the Sycamore Grove, the Capulet ball, the famous Balcony Scene, Friar Laurence's Cell, Death of Mercutio, Juliet's tomb and others.

Mrs. Jamieson announces that all friends and patrons of the library will be welcome to see this exhibit any time the library is open. There will be no charge.

SCHOOL CLUB TOURS PLANT

Party of 23 Sees All Parts of Steel Firm

Fulfilling another objective of its membership, the "Know-Your-Torrance" club of the Fern Avenue school and 14 guests from the Torrance Elementary and High schools toured the Columbia Steel plant Tuesday evening.

With Karl Semenz of the engineers' office and Walter P. Wallace, editor of The Steel Blade, as guides the group enjoyed an informative visit in all departments of the city's largest industrial concern. Club members making the trip were Mrs. Sabrey Botkin, Miss Margaret Hollenbach, Mrs. Gwen Moon, Miss Esther MacDuff, Mrs. Martha Cardwell, Miss Laura Thomas, Mrs. Oda Vans, Mrs. Ann Austin, and Mrs. Martha Connell. The visitors from the other schools were Mrs. Gertrude Haydon, Mrs. Eva Burns, Mrs. Helen Berry, Miss Myrtle Leary, Mrs. Vera Godwin, Mrs. Lila Husted, Mrs. Hilda Powell, Miss Irene Mills, Miss Madeline McLogue and Raymond J. Moon, Robert G. Vans, J. S. Austin, John M. Connell and James W. Way.

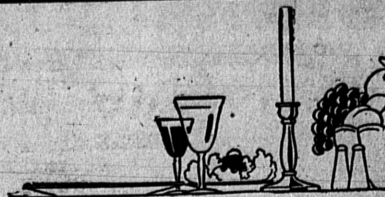
TWO ACADEMY APPOINTMENTS OPEN IN DIST.

There is a vacancy for 1937 at the Military Academy at West Point, and another at the Naval Academy at Annapolis, to be filled by the recommendation of Congressman Charles J. Colden. Because of the large number of applicants, Colden has requested the civil service commission to hold an examination at the postoffice building in San Pedro, Dec. 12, for selection for appointment.

All those who are qualified as residents of the 17th Congressional district and who desire to take this examination should communicate with Colden at his Washington address, 237 House Office Building, at once, secure important information and credentials for taking the examination.

Most Crashes Not On Curves LORAIN, O. (U.P.)—Lorain county officials found that a majority of accidents occurred on straight sections of road.

National Home Appliance Company

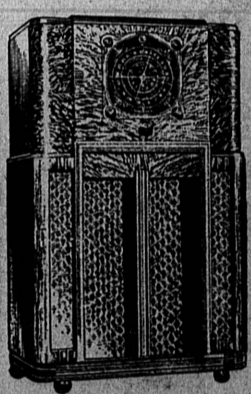


Household Necessities for CHRISTMAS

<p>Glassware \$1.50</p> <p>Eighteen glasses, three different sizes, decorated in six delicate pottery shades to match Metlox dishes. Complete your table with this attractive high-grade glassware.</p>	<p>Five-Piece Pottery Bowl Set 98c</p> <p>Another sale of Pottery Bowl Sets. Five graduated sizes in beautiful pottery shades. Fulfill every mixing bowl need.</p>	<p>Waffle Irons \$4.50</p> <p>Hostess or homemaker will take keen delight in serving crisp, golden-brown waffles, baked right at the table—just a suggestion but a very worthy one.</p>
<p>Sunbeam Iron and Clothes Sprinkler \$8.95</p> <p>By special arrangement with manufacturer we are allowing \$1 off the above price for your old iron.</p>	<p>Enamel Sauce Pan \$1.95</p> <p>Regular \$2.65 price. Vollrath's "Kook King" Enamel Saucepan, 1½-qt. "Flavor Seal" cover, in four colors.</p>	<p>Salt and Peppers \$1.35</p> <p>Glistening Crystal Salt and Pepper Shakers, in attractive, hand-cut design. Buy for gifts and for personal use.</p>
<p>Electric Toasters \$1.25 up</p> <p>TOASTERS . . . and what a wide selection to choose from. From breakfast toast to midnight snacks there are scores of times when a toaster can be put to use!</p>	<p>Dishes \$3.75</p> <p>A timely purchase of these 32 and 38-piece sets of Knowles China Dishes enables us to pass this savings on to you. A limited quantity on hand.</p>	<p>Electric Mixer \$20.50</p> <p>A new Streamlined Sunbeam Mixmaster, 10 speeds, full mix aerated beaters. Fruit juicer, priced \$2.75 extra.</p>
<p>Electric Mixer Attachments</p> <p>For the Sunbeam Mixmaster</p> <p>Drink Mixer . . . \$2.50 Meat Grinder . . . 6.00 Polisher and Buffer75 Knife Sharpener . . . 2.25 Slicer and Shredder . . . \$5.00</p>	<p>Coffee Maker \$4.95</p> <p>SILEX SETS . . . Complete with Coffee Maker, Electric Stove and Tray. An acceptable gift for coffee lovers! Others from \$1.49.</p>	<p>Relish Server \$1.45</p> <p>Five-compartment Relish Server of sparkling crystal glass with chrome holder. A charming accent to the coming holiday festival table.</p>

The . . . NATIONAL HOME APPLIANCE CO. Recommends . . .

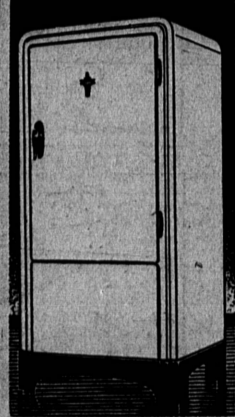
ZENITH RADIO



- Because it has . . .**
- (1) ACOUSTIC ADAPTER . . . Adjusts for perfect tone in any room in the house.
 - (2) BIG BLACK DIAL . . . with Tell-Tale Controls . . . show you what happens when you turn the knobs.
 - (3) LIGHTNING STATION FINDER . . . fast, sure, finger-tip tuning.
 - (4) SPLIT-SECOND RE-LOCATER . . . accurately logs and re-logs foreign stations.
 - (5) TARGET TUNING . . . when the bullet's on the bull's eye you are tuned in correctly.
 - (6) METAGLAS TUBES—NEW . . . all the advantages of metal tubes . . . and none of the disadvantages.
 - (7) IMPROVED OVERTONE TUNING . . . the secret of Zenithtone quality.

The Gift Supreme! ELECTROLUX

The most perfect gift you could give your wife is a new ELECTROLUX GAS REFRIGERATOR! And we have a few brand new floor demonstrator models left to go at a special discount of . . .



10%
Order Now for Christmas Delivery
Payments to start Feb. 10, 1937

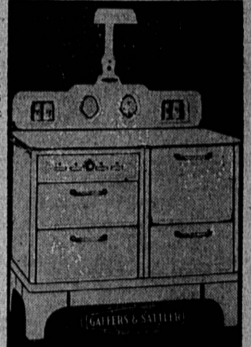
USES NO WATER
NEW Air-Cooled
ELECTROLUX
THE REFRIGERATOR

Combination Offer: Buy an Electrolux and a New Gas Range
For As \$4.38 Per Little As \$ Month

GIFT IDEA No. 2 FOR THE HOME!

A New Gaffers & Sattler GAS RANGE

Your gift to the family is solved! Just order a new Gaffers and Sattler Gas Range and have a gift of permanence, beauty and utility. To do it right buy a range AND an Electrolux together. Exceptionally easy terms for the combination.



MODEL ABOVE . . . \$139.50
Lamp \$5 Extra

NATIONAL HOME APPLIANCE CO.
HARRY M. ABRAMSON—"Friendly Credit!"
1318 Sartori Avenue, Torrance Phone 78

Join Now!
CHRISTMAS SAVINGS CLUB

Thrift Is a Gift You Can Give To Your Whole Family!

Give the family a happier Christmas for 1937. Let them know the joy of giving so that others may receive. Free them and yourself from the nagging worry of Christmas bills.

START NOW WITH A SMALL DEPOSIT IN THE TORRANCE NATIONAL BANK CHRISTMAS SAVINGS CLUB!!

You'll be surprised at the ease with which twenty-five, fifty or a hundred dollars can be accumulated; and when old Santa comes around next year you'll have cash to spend . . . cash that comes to you and your family just when you need it.

Start now! Today!

Torrance National Bank
Christmas Savings Club
"Your Community Bank"