

AID CHEST

Determined to swell the Community chest fund, Los Angeles Junior College students are selling doughnuts at a nickel apiece in a concerted "Life Saver" drive.



THE STAR OF BUS SERVICE

*SANTA FE TRAILWAYS is the star performer, the favorite of a bus traveling public. It has reached this stellar position by the introduction of many refinements not available on any other line. Large, roomy, lavatory equipped buses; Harvey Hotel rest stops; fast schedules; three Fred Harvey meals for \$1 a day; Low fares everywhere, for example, Chicago only \$29.50. Coordination with Santa Fe Ry.

*** Grand Canyon Route**

101 American Ave., Phone 62706; 116 W. Ocean Blvd., Phone 637-62, LONG BEACH. Central Bus Depot, 638 So. Main st., Ph. TR. 3403, LOS ANGELES. Or any Santa Fe Railway Agent.

SANTA FE TRAILWAYS

Perfect Lady Needs Home

"Blondie" Has Horror of Autos But Is Otherwise Available for Friendship

"Blondie" is a perfect lady and needs a good home—are there any offers?

Fully recovered (except for a slight touchiness about her right ear) from some mishap with an automobile, she has adopted Miss Audrey Dunn of the Fountain Cafe at 1314 Sartori avenue, as mistress but Miss Dunn is anxious to place her with some family who will treat her with the kindness she deserves.

"Blondie" is an attractive female police dog with excellent manners and rare good humor. She was found by Miss Dunn at the door of the cafe about six weeks ago, suffering from a bad cut over one eye, a lacerated ear and a horror of automobiles.

Good treatment and careful attention to her injuries was making "Blondie" a happy dog again when, a week later, she was evidently clubbed over the head by someone trying to enter the cafe at night. That injury has also healed and now she is in good condition.

"We'd like to keep her—she is such a good pal—but a cafe is no place for a dog and she needs a home to guard," Miss Dunn said this week. "She is friendly and protective and knows a number of tricks. I hope someone will ask for her so we don't have to send her to the humane society."

RECEIVE SAD NEWS OF TRAGIC ACCIDENT

Mr. and Mrs. H. C. Anderson of 246th street, Lomita, received a telegram this week informing them of the tragic death of Bobbie Anderson, 12-year-old nephew of Mr. Anderson, while on a duck hunt near Coeur d'Alene, Idaho. The boy visited the Andersons with his mother and sister this summer.

NO ACCIDENTS DESPITE FOG

Old-Timers Say Tuesday Blanket Worst Ever

White lines, curb lines, street lines—guides of any kind were obliterated early Tuesday morning when a thick blanket of dense fog settled over the city, causing old timers here to declare it was the worst fog-shroud to descend on Torrance in many years.

Despite the extremely limited visibility, no accidents were reported to police, altho a number of motorists found themselves driving into sidewalks or other obstacles. A number reported that the guiding white lines on the highways leading into the city were "faded out or gone completely" but police said that the lines, or most of them, had recently been repainted.

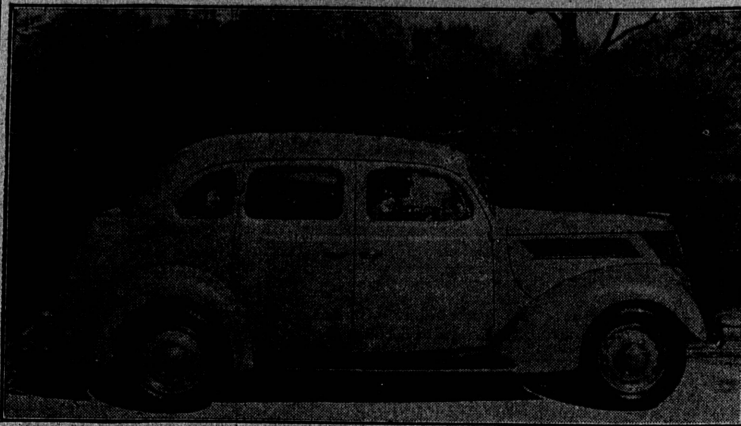
Some arteries like Arlington from the Torrance-Lomita boundary line and on Carson from the city limits into Torrance have no white lines but even these protective markers were of no assistance in a fog like the one that plumped down on the city Tuesday. Elsewhere in this district the visibility was fairly good, motorists reported.

COORDINATING COUNCIL

The monthly meeting of the Torrance Coordinating Council will be held Monday, Nov. 23, at 8 p. m. in the city hall.

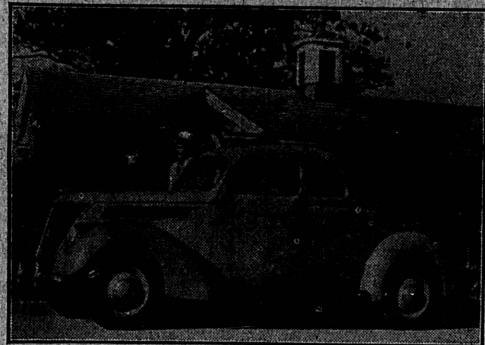
This promises to be an interesting meeting. Mrs. Stump, past president of the Lomita-San Pedro council, P. T. A., will speak on "Wholesome Recreational Facilities."

Ford V-8 de Luxe Touring Sedan for 1937



THE Ford V-8 de Luxe Touring sedan pictured above is a roomy family type car especially suitable for touring. Baggage can be stowed away in the deep luggage compartment, leaving the interior of the car unobstructed. The new grille, new bumper, headlamps recessed into fender aprons and slanting V-type windshield that opens, highlight the car's new lines. Seats are wide enough for three. The rear compartment is

New 1937 Ford V-8 Coupe



THE smart new front, new bar-type bumpers, slanting V-type windshield and smoothly flowing lines of this five-window coupe, pictured above, typify the advanced design of the new Ford V-8 cars for 1937. The coupe, which is offered both with and without de Luxe equipment, is the only single-seat closed body type. Its seat is full width, with folding divided seat back. The spare tire is carried in a compartment back of the driver. The deep luggage compartment can be reached either through the rear deck door or by tilting down the right seat back. New "finger-tip" steering and new easy action safety brakes are featured. Two engine sizes are available.

City Abandons Restroom Plan For Street Job

One protest, made by Al Robinson on behalf of the owners of the Gaylord and Mayfair apartments, Joseph Koch and Jack Koch of the Star department store, against erection of a comfort station in the small park at Sartori avenue and Torrance boulevard, caused the city council to abandon plans for the project and launch a street improvement job Tuesday afternoon.

Robinson told the council that a comfort station was not desirable in that part of the business district and would be objectionable to the apartments' tenants. Mayor Stanger suggested the alternate improvement of Narbonne avenue from Sepulveda to the city limits and this met with the council's approval.

With \$5,063 derived from the city's share of gasoline tax receipts and \$2,800 of its own funds, Torrance will widen and resurface Narbonne, install curbs and sidewalk on the west side as soon as City Engineer Frank R. Leonard completes the plans and specifications.

Seek Site Change
A movement started by J. M. Christensen early this week to ask the council to change the location of the public restrooms to the park at the intersection of Sartori and Marcelina avenues and put it underground there, received endorsement of some 120 business and professional men. They signed the petition circulated by the confectionery man but it was not presented to the council at the Tuesday afternoon session.

"We will give it to the council at the next meeting or shortly after the first of the year," Christensen said. "We believe the Sartori and Marcelina location would be more central for such a public convenience and long-desired necessity in the business district. By putting it underground, it would not be objectionable to anyone."

Improvement of Narbonne, council members pointed out, is urgently needed because children and other pedestrians living on that street must now either walk in the street itself or in dirt lanes.

Campaign Cost Reports Slow In Being Filed

Candidates Conservative In Expending Sums For Nov. 3 Votes

Candidates for office at the Nov. 3 election are slower than usual this year in filing reports of their campaign expenses, according to clerks in the county recorder's office.

None of the reports filed to date disclosed expenditures of more than \$1,000. County-wide contests, such as those waged by superior court judges, were the more expensive.

Superior Judge Frank G. Swain, of Whittier, elected to Office No. 13, expended \$818, according to his report, of which \$387 was spent for newspaper advertising. His opponent, Municipal Judge Joseph Marchetti, reported expenses of \$860.

Superior Judge Caryl M. Sheldon, elected to Office No. 8, expended \$896, of which \$689 were his own funds, his report stated. Judge Sheldon reported a \$25 campaign contribution of Jerry Geisler, attorney, and \$15 from Milton M. Cohen, Jr., also a member of a Los Angeles legal firm.

John L. Leech, communist candidate for Congressman in the 17th district, spent \$136.12 in his campaign, according to his report. Leech's affidavit stated that all but \$3 of the amount was contributed by the Communist party election campaign committee.

City to Improve Walteria Street

Ward street in Walteria from Newton to Railroad avenue is to be resurfaced by the city in \$400 sections. Councilman Hitchcock's motion to apportion \$300 for the improvement at Tuesday's session was broken down into two parts to permit the city to do the work itself without advertising for bids. City Engineer Frank R. Leonard said that the street department could complete the re-surfacing for less than a private firm.

THEY'LL BE IN THE NEW BOOK... WILL YOU?



PLEASE ORDER THAT TELEPHONE NOW!

If you've been putting off ordering the installation of a Telephone, this is a good time to act. Your name in the new Telephone Directory will make it easier for friends to find you.

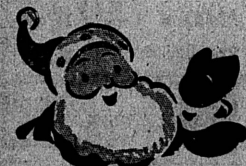
OR THAT ADDITIONAL DIRECTORY LISTING

Perhaps you've been wanting to list your name separately, as well as your firm's name. Perhaps you have thought of "reference listings," such as "If no answer call..." Or some other change or addition. (Or perhaps you have been considering Directory Advertising.)



JUST CALL TORRANCE 4600 FOR SERVICE, LISTINGS OR YELLOW PAGES ADVERTISING

SOUTHERN CALIFORNIA TELEPHONE COMPANY
1266 SARTORI AVE. TELEPHONE TORRANCE 4600



Last Chance to SAVE \$40.95

on a New

ROPER CLOCK CONTROLLED GAS RANGE

Offer Positively Expires Next Wednesday, Nov. 25

Range may be installed anytime up to December 26. What a grand gift for the Wife!



REGULAR PRICE \$139.50
Less Special Allowance 30.00
\$109.50
Less 10% for Your Old Range 10.95
\$98.55
DOWN PAYMENT 5.00

\$93.55

Small Monthly Payments

* Light \$5 Extra.

Husbands! ... Here's a Tip for You!

Think how happy your wife would be on Christmas morning if she found a brand new ROPER Gas Range in her kitchen. And if you order it before next Wednesday, November 25, you can save at least \$40.95! All you need to pay now is the \$5 down payment... the balance may be paid off in easy monthly payments. We will gladly reserve the range for you at our store and install it at Christmas time. But remember, to get the \$40.95 SAVING, you must buy the range on or before next Wednesday, November 25.

SAM LEVY DEPARTMENT STORE
1307-1313 Sartori Ave. Torrance Phone 121-W

WARNING

The Special

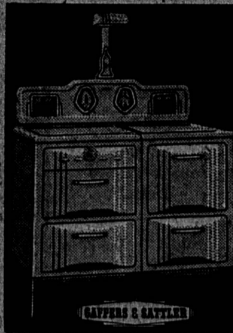
\$30.00

Discount

ON
Clock Controlled
GAFFERS & SATTLER GAS RANGES

Expires
NOV. 25

Act now before this great offer is gone! Only 5 days left! See us today for a demonstration!



Have a New Gaffers & Sattler In Your Home for Christmas

By special arrangement with the gas company, you may place your order NOW for a new range and have it delivered to your home any time before Christmas. Order must be placed before Nov. 25th.

NATIONAL HOME APPLIANCE CO.

1318 Sartori Avenue, Torrance

HARRY M. ABRAMSON—"Friendly Credit"

Phone 78

Join the Thousands of Housewives Who Have Taken Advantage of the ...

ELECTROLUX

Special Discount

of
10%

On All Floor Demonstrator Models

Supply Rapidly Being Exhausted

ONLY

\$5 DOWN

SMALL MONTHLY PAYMENTS



NEW Air-Cooled
ELECTROLUX
THE SERVEE Gas REFRIGERATOR

