

All Advertisements

Ordered for the newspaper are also published in the Tri-City Shopping News without extra charge.

Only Newspaper Published In Torrance

Consolidated Edition of Torrance Herald & Lomita News

Two Sections 16 Pages This Issue

The Torrance Herald

TWENTY-SECOND YEAR—No. 46. SECTION A

TORRANCE, CALIFORNIA, THURSDAY, NOVEMBER 5, 1936

PER COPY 5c

COLUMBIA AUTHORIZES INCREASE IN WAGES

Dist. Vote Follows County Trend

TORRANCE-LIMITA JOIN NATION IN SMASHING NEW DEAL VOTE

Colden Accorded More Than 2 to 1 Lead In This Area; Fitts Edges Palmer as 6,680 Vote in 23 Precincts

With a record turn-out of voters, Torrance and Lomita joined the great army of U. S. citizens that overwhelmingly endorsed the New Deal and its great leader, President Franklin Delano Roosevelt.

They poured in a steady stream into the 12 precincts in Torrance to stamp their 3,763 ballots at a ratio of slightly less than three-to-one for the Administration that contributed so greatly to the city's prosperity climb.

They thronged Lomita's 10 precincts, 2,901 strong, depositing Democratic ballots at the same ratio and the total presidential returns for Torrance, Lomita and Shoestring and Palos Verdes precincts bettered the three-to-one majority for the President and his running mate, John Nance Garner. The vote was:

In Torrance—complete, unofficial:
ROOSEVELT 2,720
LONDON 931
In Lomita—complete, unofficial:
ROOSEVELT 1,807
LONDON 633

At the same time, voters in this district did not forget Congressman Charles J. Colden and his good works for the 17th district. He received a smashing vote of confidence in Torrance, 2,228 to Republican Roach's 994. Lomita also championed the incumbent representative, giving him 1,468 to Roach's 757. Lee Geyer was given four write-in votes in Torrance and four in Lomita.

Delayed Returns Given
District Attorney Buron Fitts nosed out Judge Harlan G. Palmer in Torrance, 1,740 to 1,568. Lomita reversed this lead for the incumbent D. A., by giving Palmer an 18-vote lead. Palmer, 1,169; Fitts, 1,151.

Continuing the Democratic sweep, Torrance electors contributed to Assemblyman Reaves' reelection with 2,066 votes to Perry Briney's 914 Republican ballots. Briney is a former Torrance city attorney. Lomitans also favored Reaves, 1,438 to 590.

The results in this district on the judicial offices closely followed the state returns and these will be found on another page in this edition. Torrance and Lomita crushed Proposition No. 22, the Retail Store License (Continued on Page 6-A)

Complete county election Returns

Complete but unofficial returns for Los Angeles county were announced late this afternoon by Registrar Kerr. The county from the 4,261 precincts for president is: Roosevelt 744,385; Landon, 352,075. District Attorney Fitts won re-election by a 35,000 majority over Judge Palmer, the count being: Fitts, 529,568; Palmer, 494,528.

Congressman Colden's endorsement was slightly less than two-to-one in this district, the Democratic incumbent receiving 48,505; Roach (R), 23,535, and Leech (C), 2,569. Assemblyman Reaves (D) swamped Perry Briney (R), 18,157 to 6,136 in the final returns.

FDE Tide Rolls On
The county voted down the Tideland Oil Drilling proposition (No. 4), 453,093 to 431,736, and negative No. 22, the Retail Store License Tax, 588,324. This was the trend throughout the state on those two measures.

As election reports became more complete throughout the nation today it was evident that President Roosevelt's plurality over Gov. Landon will reach the 10 million mark. The Executive has more than 25 of the 45-odd million ballots cast.

Report from Topeka indicated that Landon will retire to private life at the conclusion of his term Jan. 1. In California, late returns today showed the President had a 900,000 plurality, receiving more than 1,760,000 votes.

Map Refuge Camps

County Major Disaster Plan Being Followed by Surveyor

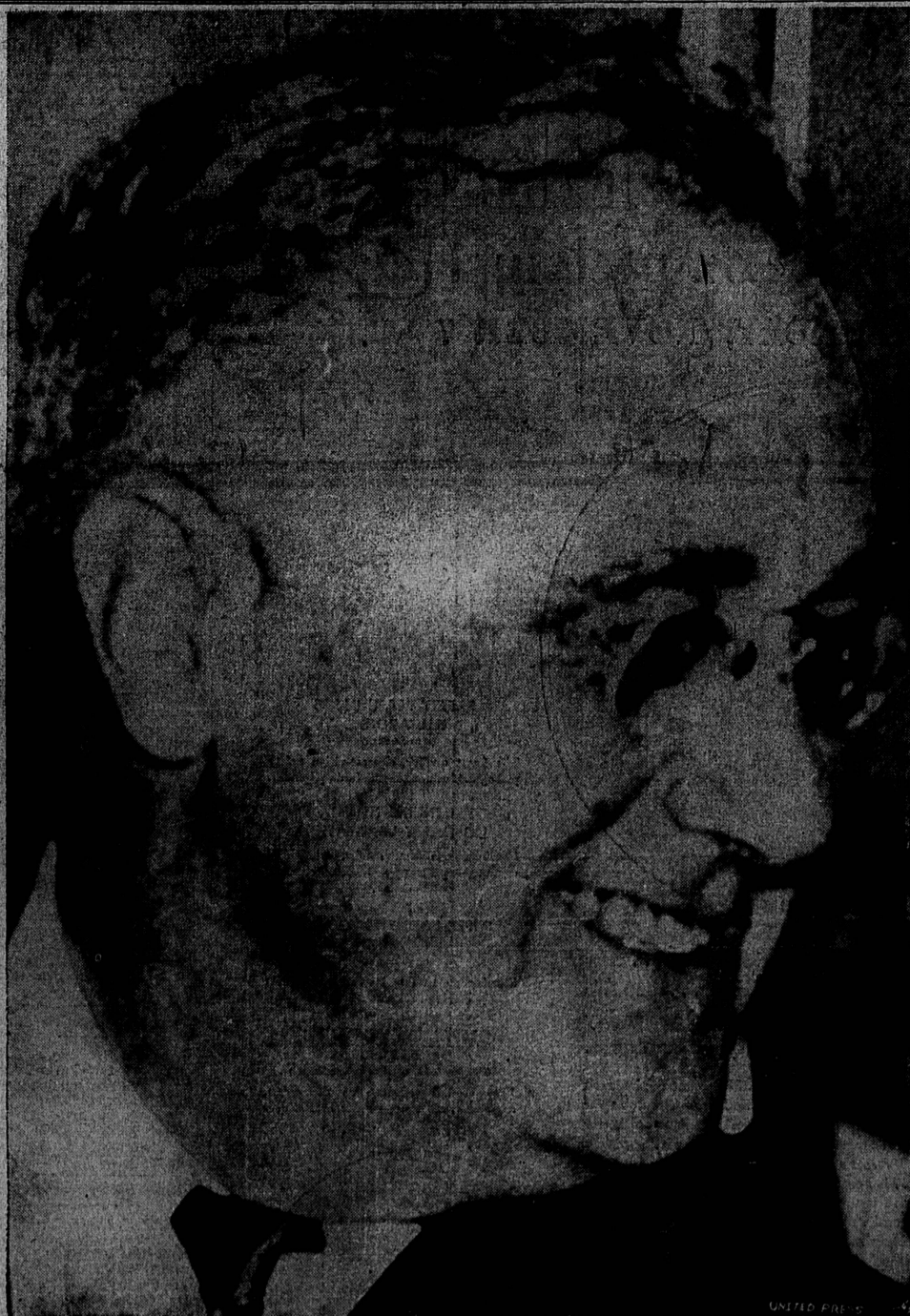
Layout plans for five large refuge camps in various sections of the county were being drawn up this week in the county surveyor's office, as part of the county's major disaster plan that would be put into action in time of earthquakes, fire or flood.

The surveyor is preparing a blueprint of the layout of each of the five concentration camps, and will designate how tents should be located in rows, where water pipelines should be laid in event of emergency, and what provision should be made for sanitary facilities.

Locations selected for the camps are the Pomona fair grounds, where the best facilities probably will be available; the new Ross Field recreation center at Arcadia; Olive View sanatorium in San Fernando valley; Rancho Los Amigos, which is the county farm between Downey and South Gate, and Mines Field, Los Angeles city's municipal airport, southwest of Inglewood.

The layout plans were requested by Sheriff Eugene Bischoff of Santa Monica, who is the man in charge under the major disaster plan for the county. County Surveyor Alfred Jones was authorized to do such research work as might be necessary to prepare any plans and to carry out the provisions of the act.

Now Let's Make It Unanimous



PRESIDENT FRANKLIN DELANO ROOSEVELT
... the campaign is over. Let's go forward together

CITY FIRMS CLOSE NEXT WEDNESDAY FOR ARMISTICE DAY

Nov. 11 Will be Full Holiday

Due to the fact that the merchants of the city decided to observe Armistice Day next Wednesday as a full holiday and remain closed, the Torrance post office will close at noon, according to Postmaster Earl Conner.

There will be one mail delivery in the morning.

At Lomita, Postmistress Birda Paddock announced that her office would close at 9 a. m., Wednesday.

The only major observance of the 18th anniversary of the end of the World war in this district will be held at Narbonne high school field at 10 o'clock, Nov.

11, under the direction of the Lomita V. F. W. and Harbor City American Legion post. All residents of Torrance and vicinity are cordially invited to attend this observance.

So far as it is known, Torrance is the only city in Southern California to observe Armistice Day as a full holiday with

all places of business closed as well as the city offices, schools, banks and utilities. Veterans' organizations are pointing to Torrance as a model for their own particular communities and the fact that this city pays such a tribute to patriotic institutions should result in much favorable publicity elsewhere.

Amount of Boost Awaits Outcome Of Discussions

President Diehl Issues Statement Expressing Hope for Successful End to Present Negotiations

Wage increases for employees of the Columbia Steel Company are shortly to be granted, it was disclosed today by Ambrose N. Diehl, Columbia's president.

The amount of the wage boosts will not be determined until an agreement has been reached between the management and the employees' representatives, it was learned. However, this agreement is expected to be reached within a few days.

In his formal statement to The Herald, Diehl said that "negotiations between the employee representatives and the management for a wage adjustment at all plants of the company are progressing."

Cite Chief Obstacle
"Informal discussion between officials of the company and the elected representatives of the employee group have been going on for some months. These discussions grew out of widespread requests for an increase in the wage scale, particularly in the lower earnings brackets," his statement points out.

"It is confidently hoped that these negotiations will reach a successful conclusion. The chief obstacle to final consideration of the wage question has been the economic position of the steel industry, which suffered very severely in the years of the depression and only recently began to emerge from conditions of low production, greatly reduced sales, and large operating deficit.

Parley in Progress
"The negotiations now under way are being held under the collective bargaining procedure introduced with the adoption of the Employees' Representation Plan several years ago," Diehl concluded.

A meeting to discuss the proposed wage increase was in progress this afternoon between officials and employee's representatives at the Torrance plant.

Basich Brothers Enlarge Plant

Erection of an additional storage building for construction machinery and equipment was under way this week for Basich Brothers of Torrance at their yard at 20630 Normandie avenue. The permit was issued late last week by the district office of the county building bureau.

RESIGNS



HARRY H. DOLLEY
City Treasurer

Harry H. Dolley, veteran city treasurer of Torrance ever since the city was incorporated in 1921, today resigned his post. His resignation was scheduled to be accepted late this afternoon by the city council. No decision regarding the appointment of a new city treasurer has as yet been reached, according to city officials.

In his letter to the city council, which was read at a meeting yesterday afternoon, Dolley said:

Tells Appreciation
"I find that my private business at present demands all of my time and that it is impossible to continue my duties as city treasurer.

"For the above reason I hereby tender my resignation as city treasurer and beg that I be relieved of my duties at once, or as soon as you find it convenient.

"I beg to thank you and each of you for the splendid co-operation you have given me in the past."

Cracks 100 Million

County Tax Bill Total Back to '32 Peak; Dec. 5 Deadline

Los Angeles county's total tax bill for 1936-37 will exceed the \$100,000,000 mark for the first time since 1932, according to a statement made this week by H. L. Byram, county tax collector, in mailing out the 1936-37 tax bills.

Local residents who do not receive their tax bills before Nov. 10 should make application promptly to the county tax collector's office on the third floor of the Hall of Justice. The bills were mailed last week to names and addresses as listed upon the assessment roll.

This year's total levy is \$104,477,000, as compared with \$97,389,000 last year. The high point was 1929's \$134,600,889. Public

utilities will pay \$10,715,000 this year to the county in taxes, as compared with \$9,714,000 last year.

First installment of Los Angeles county, city, flood control, school district and special district taxes were due Monday, Nov. 2. Byram recommends that tax remittances be mailed in rather than brought in. There will be a 8 percent penalty if first installment taxes are not paid by Dec. 5. It is recommended that both first and second installment taxes be paid at the same time, thus relieving the citizen of the necessity of making a remittance again next spring.