

Care For Piano In Cold Weather

"Watch your piano!" was the warning issued by Don E. Humphreys, of Humphreys Music Company, 130 Pine avenue, Long Beach, today as he cautioned music housewives that with the approach of winter weather special consideration was required to protect the piano.

Pointing out that pianos are adjusted to an accuracy of 2-1000ths of an inch, he declared that it would be well to move pianos away from windows, radiators or woodburning fireplaces. His warning was called forth by the widespread interest in pianos that has been responsible for the largest sales in a decade.

"Ordinary expansion and contraction caused by heat and cold does not harm a piano although it is a factor in requiring regular tuning," he continued. "However, room temperatures generally vary much more in cold weather than during the rest of the year. It is these major fluctuations that injure instruments."

Blind Permitted To Sign As Voters

Blind persons who are able and willing to sign the register when they call to vote at polling places on election day should be permitted to do so, the county counsel advised election officials today.

Complaint had been made by the Braille Institute that election officials at some of the precincts at previous elections would not permit blind persons to sign, when they desired to do so. Election clerks will be supplied with a copy of the law by Registrar W. M. Kerr where blind persons call to vote, so that they may be correctly advised.

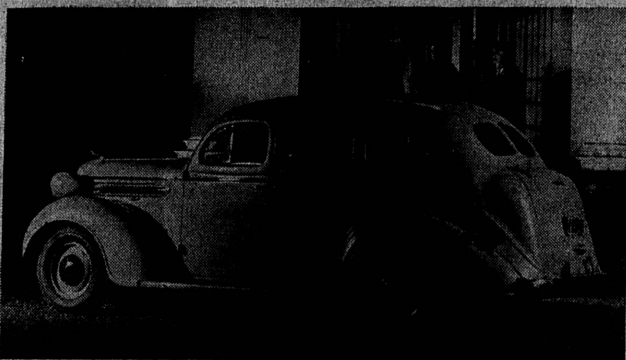
Mother Finds Lost Son

GLASGOW (U.P.)—After 20 years of silence, Mrs. Helen Tweedle, 67, of Glasgow, has received news of her son, whom she thought had been killed in the World war.

"Dead" Man Returns

CALCUTTA (U.P.)—A man who was left for dead on a funeral pyre 27 years ago has returned to Dacca to claim a fortune.

BEAUTY MARKS NEW 1937 DODGE CARS NOW ON DISPLAY



Santa Barbara Airmail Cachet

United Air Lines has mailed formal notification to all Southern California philatelists and stamp collecting groups of a special cachet, November 1, marking the start of airmail service into Santa Barbara from both Los Angeles and San Francisco.

Homer J. Merchant, district

traffic manager for United, said covers to be dispatched from this area should be sent to the downtown office of United Air Lines at 608 W. Sixth street, not later than October 31. The first airmail flight will leave Union Air Terminal at Burbank at 9:45 a. m., November 1, and landing at Santa Barbara at 10:22 a. m.

Read Our Want Ads!

Everything that contributes to driving and riding comfort seems to have been provided in this 4-door touring sedan of the new Dodge line now in display at the showrooms of Walter G. Lynch, Dodge and Plymouth dealer in Redondo Beach.

From its striking new radiator grille right back to the last graceful curve of its body, this new Dodge is a complete unit of advanced "windstream" styling... is easily the most beautiful Dodge ever built!

Announcement of the 1937 Dodge line reveals an impressive combination of eye-filling beauty and mechanical perfection.

The body styles will be available—business, rumble-seat and convertible coupes; 2-door sedan and 2-door touring sedan; 4-door sedan, 4-door touring sedan and convertible sedan; 7-passenger touring sedan and limousine. While the touring sedans are equipped with built-in trunks, the sedans have gracefully slanting lids in the rear body sections thru which access is gained to roomy tire and luggage spaces. In coupe models, spare tires are carried back of folding seats.

Entirely New Bodies The bodies of the 1937 Dodge line are entirely new. They are of all-steel construction, including the roofs which are integral with the remainder of the bodies. Drip moldings that will be appreciated in rainy weather sweep over door and window openings.

The head-on appearance of the car is beautified by a grille in which a vertical center section is flanked by horizontal chrom-plated bars. Forward and rear lines of the bodies have been given new treatment, and doors have been dimensioned with evident regard for passenger comfort. Rear seats are 48 1/2 inches wide and front seats 47 inches in width—giving ample room for at least six passengers. Seat cushions are of a luxurious type. The back tops of front seats are upholstered in a novel manner, with a sponge-rubber-padded safety roll which protects rear seat passengers, especially children, in cases where the car is brought to an abrupt stop. Rear floors are level over their entire areas, a result brought about by the adoption of the Hypoid rear drive with its lower propeller shaft. Dome lights are located over the divided rear windows.

Safety Is Keynote The instrument panel is remarkable for safety features of its own. The instruments are placed directly in front of the driver. Switches, control knobs, glove compartment and ash tray handles, even the ignition key are sunk into the surface of the instrument panel with the result that the entire layout presents a smart, unbroken expanse from which nothing protrudes.

Remarkable success is said to attend the efforts of Dodge engineers to isolate road noises and operating sounds. The steel roof, rear quarters and cowl, body sides and door panels are heavily insulated. Bodies Insulated From Chassis A novel body-mounting method has been adopted. This involves the use of chassis outriggers equipped with rubber spools thru which chassis and body are prevented from being in actual metal-to-metal contact. Balanced weight distribution and synchronized springing contribute further to the riding ease noticeable in the new Dodge cars. The engine has been moved farther ahead. Front and rear seats have been advanced so rear-seat passengers ride ahead of the rear axle and the weight carried on the springs is evenly divided between front and rear.

Synchronized Suspension The full measure of riding comfort is said to be assured by the use of exceptionally long, semi-elliptic springs made of thinned-down leaves of Amola steel. The fact that the front springs are shackled in front, instead of in the rear, contributes to the ease and smoothness with which the car is steered.

The action of the springs is supplemented by four telescoping, double-acting hydraulic shock absorbers similar to the type used on airplanes. Chassis Sway Eliminated Another Dodge chassis improvement is seen in the sway eliminator which now functions independently, without being connected to the shock absorbers. The engine is of 3 1/2 x 4 1/2 inch bore and stroke developing a maximum of 87 horsepower. Features like the famous Dodge full-length cylinder cooling system, steel valve inserts, pressure lubrication, four-ring aluminum pistons, automatic spark, automatic choke, etc., are continued.

Full-Hydraulic Brakes Brakes are of the genuine hydraulic type and of the construction that has made them, for a number of years, the feature of Dodge safe-stopping tests and demonstrations.

Also worthy of note among Dodge chassis details are: patented floating power engine mountings; Dodge synchro-silent transmission; cowl recess in front of clutch and brake pedals giving extra toe room for the driver's feet; streamlined steel wheels with provisions for the

easy attachment of tire chains; an independent parking brake operating on propeller shaft; arrangements for installation of an extra radio-speaker in the rear compartments of sedans, and many others.

Economy Again Rates High Dodge engineers are emphatic in the statement that the operating economy of the company's latest product is fully equal, perhaps superior to the economy which has distinguished Dodge automobiles in the past.

"This District Can Lead State For Roosevelt"

Golden Says Little Progress Possible With President and Congress At Odds

"If the Democratic voters do their duty, and I think they will, President Roosevelt will carry California by 500,000 votes on Nov. 3," predicts Congressman Charles J. Golden.

"And nothing would give me greater pleasure," admitted the Congressman, "than to be able to wire President Roosevelt after election that my Congressional district gave him the largest plurality of any Congressional district in the state of California, and possibly any such district north of the Mason Dixon line. Such a famous record is quite possible, since this district has perhaps the largest Democratic registration in California."

"At any rate," says the Congressman, "the verdict of what the policies of our nation are to be in the future rests solely with the voters. I sincerely hope they will see fit to go forward and not backward. And, of course, President Roosevelt can do nothing without a Democratic Congress to assist him. Nobody is more vitally affected than the people themselves when this country has a Republican President and a Democratic Congress or a Democratic President and a Republican Congress. One throttles all the good work of the other, and consequently progress, if any during such a period, is exceedingly small."

Voters needing assistance or information on election day may secure it at any of the Democratic headquarters located in the 17th Congressional district.

State propositions selected by Kerr for the snap tally are No. 2, personal income tax, No. 3, liquor control; No. 4, tideland oil drilling; No. 9, local option; No. 21, penal institutions; and No. 22, retail store license.

Semi-official reports on the remaining offices and propositions to be balloted on will begin to come in before midnight, it was believed, except where there is an unusually heavy vote and election clerks are retarded in their work by the reports wanted first.

Election Reports Will Be Turned In at City Hall

Snap Tallies Will Be Taken of Six Important Propositions

Election reports for this area will be turned in at Torrance city hall on election night, November 3, or as soon thereafter as the ballots are all counted, it was announced this week by W. M. Kerr, registrar of voters.

Some two score checking-in stations were so designated throughout the county by Kerr, with the approval of the board of supervisors.

Assembly district balloting will not be covered in the telephonic reports, Registrar Kerr decided, and only six of the 22 state propositions are included on the so-called "snap tally."

The telephonic report will cover the ballots cast for presidential electors for Roosevelt and Landon, all eight of the Congressional districts, Offices 8, 9, 13 and 15 of the superior court, and the two candidates for district attorney of the county.

State propositions selected by Kerr for the snap tally are No. 2, personal income tax, No. 3, liquor control; No. 4, tideland oil drilling; No. 9, local option; No. 21, penal institutions; and No. 22, retail store license.

Semi-official reports on the remaining offices and propositions to be balloted on will begin to come in before midnight, it was believed, except where there is an unusually heavy vote and election clerks are retarded in their work by the reports wanted first.

New Naval Armory Opens

TOLEDO (U.P.)—The new naval armory here at the mouth of the Maumee river has been opened. The main drill floor, constructed with inlaid maple blocks, will accommodate 4,000 persons.

Everything in Music

MUSICAL INSTRUMENTS
PIANOS • RECORDING
SHRIMP
Liquor • Beer • A...
HUMPHREYS LONG BEACH
130 PINE AVE

New!
Iron Everything Easily!
NORGE PRESS-IT IRONER

Limited Offer!
A COMPLETE HOME LAUNDRY!
IRONER AND WASHER

Reg. \$49.50

Special Free Demonstration!

Mr. William Chapman, special NORGE factory representative, will give free demonstrations of this marvelous new NORGE IRONER as well as the NORGE WASHER. Telephone Modern Appliances, Torrance 888, and Mr. Chapman will gladly call at your home. No obligation, no strings.

2-DAY FREE TRIAL!

The new Norge PRESS-IT Ironer is truly the most remarkable yet to come on the market. Weighs only 36 pounds, is portable to any room of the house, and, like the washer, is finished in white with black trim. Has thermostatically controlled heat. And it actually costs you only \$10.45 on this special offer!!

Regular \$49.50
Regular \$89.50
BOTH for \$99.95

SAVE \$39.05
By Buying Today!

The cleverest little portable ironer that irons everything in a professional tailor shop manner is here—and on special sale for a limited time with the most beautiful NORGE WASHER we have ever sold.

Save money by acting promptly—TERMS AS LOW AS A FEW PENNIES A DAY delivers this complete home laundry outfit to you.

Demonstration Proves Norge Best! Come in Today!

PHONE OR CALL

MODERN APPLIANCES

1279 Sartori Phone 888

Today's Kitchen is All-Electric. If you own an Electric Refrigerator, you've already taken the FIRST STEP

THE Second AND MOST IMPORTANT Step IS YOUR NEW ELECTRIC RANGE

The greatest single improvement you can make in your home. No other purchase can possibly mean as much in joy and freedom of living as a new electric range. Thousands of steps saved every day... hours of extra time to do with as you will... the satisfaction of super-delicious meals to tempt the appetites of your family.

Your electric range will give you all these things and more. Yet, rather than an expense, it offers you a very definite economy. You not only save time and food, but you automatically get a special low electric rate which reduces the average cost of all electricity used in the home.

So why not discard your outworn, inefficient equipment for time-saving, food-saving, money-saving electric cookery? The new range models are now being displayed by your electric dealer.

SOUTHERN CALIFORNIA EDISON COMPANY LTD.

Why wait? Turn in your old stove now for a new electric range.

Operating sounds. The steel roof, rear quarters and cowl, body sides and door panels are heavily insulated.

Bodies Insulated From Chassis A novel body-mounting method has been adopted. This involves the use of chassis outriggers equipped with rubber spools thru which chassis and body are prevented from being in actual metal-to-metal contact.

Balanced weight distribution and synchronized springing contribute further to the riding ease noticeable in the new Dodge cars. The engine has been moved farther ahead. Front and rear seats have been advanced so rear-seat passengers ride ahead of the rear axle and the weight carried on the springs is evenly divided between front and rear.

Synchronized Suspension The full measure of riding comfort is said to be assured by the use of exceptionally long, semi-elliptic springs made of thinned-down leaves of Amola steel. The fact that the front springs are shackled in front, instead of in the rear, contributes to the ease and smoothness with which the car is steered.

The action of the springs is supplemented by four telescoping, double-acting hydraulic shock absorbers similar to the type used on airplanes.

Chassis Sway Eliminated Another Dodge chassis improvement is seen in the sway eliminator which now functions independently, without being connected to the shock absorbers. The engine is of 3 1/2 x 4 1/2 inch bore and stroke developing a maximum of 87 horsepower. Features like the famous Dodge full-length cylinder cooling system, steel valve inserts, pressure lubrication, four-ring aluminum pistons, automatic spark, automatic choke, etc., are continued.

Full-Hydraulic Brakes Brakes are of the genuine hydraulic type and of the construction that has made them, for a number of years, the feature of Dodge safe-stopping tests and demonstrations.

Also worthy of note among Dodge chassis details are: patented floating power engine mountings; Dodge synchro-silent transmission; cowl recess in front of clutch and brake pedals giving extra toe room for the driver's feet; streamlined steel wheels with provisions for the

CHARLES B. MITCHELL
R. P. M. Authorized Distributor ATLAS TIRE
Motor Oil for
Standard Stations, Inc. Ph. 765
Carson and Cabrillo

SMART TRAVEL
at low cost and high speed

The Challenger

THE CHALLENGER—a new-type train with a new-type service! It has revolutionized Coach and Pullman Tourist-car travel, making itself the most popular train in western America.

SPEED—only 58 1/2 hours to Chicago...no faster train without extra fare. **EXCLUSIVE FEATURES**...special coaches for women and children only...registered nurses as stewardesses...Coffee Shop Dining serving also as recreation cars. **COMFORTS AND ECONOMIES**—Fully air-conditioned, de luxe coaches with deeply upholstered reclining seats...free pillows and drinking cups...free porter service day and night.

Appetizing Meals at Amazingly Low Cost
BREAKFAST 25¢ • LUNCHEON 30¢ • DINNER 35¢
Enjoyed at your leisure while you ride in cheerful, air-conditioned dining cars. Meals all the way to Chicago—only \$2.05.

Other Fast Union Pacific Trains East: The new Streamliner—CITY OF LOS ANGELES; LOS ANGELES LIMITED; PACIFIC LIMITED.

UNION PACIFIC—LOW FARES in Effect Now—and All Winter

W. F. NASH, G. A., SAN PEDRO
101 W. 7th Street, Phone 1073
434 W. 6th Street, Los Angeles
Phone Trinity 9211