

SHOP TALK

By RAY BROOKS

With the opening of the little red schoolhouse just over the horizon, September 10, to be exact, Torrance merchants are advertising clothing and furnishings for the boys and girls. And the selections are larger than ever before, with quality exceptionally high and prices low.

Entire outfits for the boy or girl of any age can be purchased right here in town. There is no need to trek to the larger cities to buy. Torrance merchants offer just as fine values as the downtown stores, and they appreciate the business MUCH more.

And speaking of Boys and Girls Of the High School Age... and even younger. Who, because it is smart And sophisticated, have Taken to smoking Cigarettes, and even Pipes That they don't like Because the Pipes burn Their tongues; And some Can drink hard liquor With great abandon (though They make faces when they Drink it, and a little Goes a long, long way) These children to Themselves are all They seem to be. But, for all their Nonchalance And worldly demeanor They give themselves Away when they stalk Manfully to a cigar Or confectionery Counter and buy a CANDY BAR.

In the business spotlight today is Morris G. Koch, late of the Star Department Store, who has taken the bull by the horns (no reference to the meat he is serving) and with great to do throws open the doors today on the latest Koch family enterprise... Cooky's Club Cafe and Cocktail Room, 1309 Post.

If the name puzzles, please be advised that Morris changed it from Koch to Cook (not actually of course) because the former was mispronounced so often. Then, too, Morris has long been known as Cooky, so it was only a natural change.

Morris really has quite a swanky establishment. He has a competent staff, a private dining room (or drinking room, as the case may be) and plans to serve good food and drinks at reasonable rates.

Torrance can use just such a place as Cooky's Cafe, and to Morris we give our heartiest best wishes for long success.

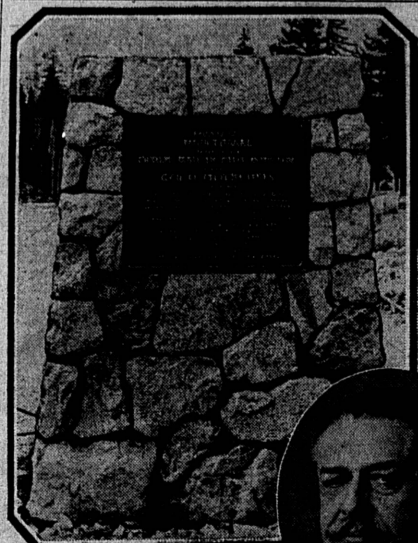
Modern Appliances, the new appliance store at 1279 Sartori, is offering this week a real Scoop! You can buy a regular \$99.50 Stewart-Warner console radio with every modern feature for only \$49.50 with your old radio. All are brand new 1936 models. We say this IS a bargain.

Harry Abramson says the new 1937 Zenith radios are the finest yet and that he is selling them faster than the proverbial hot cakes. Electro-lux, too, are selling. In fact, business with him is very good.

Renfro to Serve Jail Sentence

C. A. Renfro, 1026 Palm avenue, Hermosa Beach, arrested by Officer Percy Bennett Aug. 15, in WALTERIA, was found guilty in a court trial before Judge Robert F. Lessing yesterday of charges alleging drunk driving and will serve 25 days in the county jail in lieu of a \$50 fine. Renfro, with four passengers, overturned his car on the highway, and when he appeared for a hearing on Aug. 24 plead not guilty. The court trial set for yesterday resulted in his being found guilty.

Edison Company Dedicates Tablet At Ward Tunnel to Former President



Above, Memorial to the late George Clinton Ward, former president of the Southern California Edison Company, erected at the Huntington Lakes outlet of Ward Tunnel in the Company's Big Creek hydro-electric development in Fresno county. Right, Mr. Ward.

Commemorating the outstanding service of the late George Clinton Ward, construction genius and former president of the Southern California Edison Company, a group of Edison executives and friends of the builder yesterday (Wednesday) dedicated a tablet in his honor on the eastern shore of Huntington.

Lake at ceremonies changing the name of Florence Lake tunnel to Ward tunnel. The tablet, on a base of granite, is at the outlet of Ward tunnel, a vital unit in the Edison Company's \$150,000,000 Big Creek-San Joaquin river hydro-electric development, the construction of which was under Mr. Ward's supervision.

Paying high tribute to Mr. Ward's contribution to the electrical industry, W. C. Mullendor, executive vice president of the Edison Company, delivered the main address on the dedicatory program held at 11 a. m. He spoke of the value of the Big Creek enterprise not only as a stabilizing influence in California's electric supply but also as a regulator of water-shed for irrigation, a stimulator of commercial, industrial and agricultural activity, thru the use of electric power, and a pioneer pattern for hydro-electric development which has been followed in many parts of the world. The improvement of this area by the Edison Company

Survey Shows American Man Grows Taller

NEW YORK (U.P.)—Evidence that the physique of the average American man is steadily approaching the proportions set by artists for the ideal figure is contained in a group of recently completed surveys, for which the measurements of several hundred thousand men were used.

First of the surveys, made by Dr. Franz Boas, internationally known anthropologist, disclosed that a full inch has been added to the height of the average man during the last half century.

Compiling measurements taken from its records over a period of 10 years, a nationally known insurance concern announces that the proportions of the man of today, including the chest, height, thighs and arms, are 8 percent nearer those of the ideal man than they were a decade ago.

Conducted by Charles Atlas, authority on physical culture, a third survey reveals that in 1926 chest measurements of the man between 25 and 40 averaged 34.9 inches. Today, the average is 36.2, or a gain of a little more than an inch. At the same time it was found that where the average waistline in 1926 was 31.3 inches, today it is 30.1 inches, or a decrease of 1.2 inches.

The latter survey further disclosed the same ratio of improvement in the figure of the man of middle age as in that of the younger man. Commenting on this fact, Dr. Raymond Pearl, biologist, says, "There is no reason why men should put on weight in the 40's. They do not reduce their calory intake in anything like the same proportion they reduce their muscular exercises and the result is weight increase."

This tunnel, with a dog team their only means of communication with the outside world.

Important Project

The Edison Company's Big Creek project is one of the largest hydro-electric developments in the world. The enterprise entailed the building of railroads into mountains covered with virgin forests, constructing nine dams creating three large artificial lakes, driving 30 miles of tunnels, laying huge penstocks and building five power houses, as well as the construction of 723 miles of transmission lines to carry electric power to Southern California homes, farms, stores and factories.

The Big Creek development, begun in 1911, was completed in 1928. It supplies 532,172 horsepower of the Edison Company's combined hydro-electric and steam-electric generating capacity of 1,274,852 horsepower.

Suits Filed In Superior Court May Defeat Aid to Property Owners

Los Angeles county officials today were awaiting a hearing in superior court before taking further steps to aid thousands of property owners in heavily-delinquent special assessment districts, as the result of suits filed over the week-end on behalf of bondholders.

The suits, filed by the District Bond Company and by H. H. Gramer, will only serve to defeat the plans of county officials to aid property owners who have been saddled with huge burdens, according to County Counsel Everett W. Mattoon, whose Mattoon Act has been responsible for the dilemma.

Wednesday the board of supervisors was scheduled to decide whether \$1,175,000 of state gasoline and license tax funds is to be distributed among special assessment districts in 17 cities.

Filing of the suits, on Friday and Saturday, may result in a decision to impound funds that it had been hoped to apply against interest and sinking funds of the delinquent districts. The supervisors had tentatively agreed that the funds set aside for relief would be applied to reduce the bonds where delinquency was 30 percent or less, but if in excess of 30 percent, relief money would be impounded by the county to purchase bonds in an effort to reduce the indebtedness.

The county special assessment relief committee has filed a report with the supervisors recommending in detail the policy to be followed by the committee in the 113 special assessment districts legally eligible to aid by the gasoline and license tax monies.

"In view of the fact that the A. and I. district act makes it the duty of the supervisors to pyramid the levy if required, there is no legal defense to the suit, the California supreme court having directly passed on that point recently," according to Deputy County Counsel Harold W. Kennedy, the county's special assessment expert.

In the past, the supervisors have disregarded the pyramiding requirement, and no one has attempted to force them to pyramid levies, realizing it would mean disaster.

The District Bond Company, headed by Nels Gross, asks a writ of mandate from the superior court to compel the supervisors to levy a sufficient tax to pay all past due delinquencies in A. and I. 115, Atlantic avenue, between Maywood and South Gate; A. and I. 30, South Broadway, Los Angeles; and A. and I. 136 and 137, Mines avenue, near Inglewood," Kennedy explained.

The second suit brought by H. H. Cramer seeks to force the supervisors to make pyramid or

Harbor City Man Burned to Death

Harry Jaudon, 22, residing at 1814 W. 24th street, Harbor City, burned to death Sunday night when he was pinned in the wreckage of a car in collision with an oil truck which had halted for a boulevard stop at Willow and Avalon boulevard. He could not be extricated. The driver of the car, Charles P. Nance, 57 Zane street, Long Beach, received internal injuries and severe burns.

EXPECTED HOME

Mr. and Mrs. Grover C. Whyte, 1620 Post avenue, will return from their two-weeks' vacation spent with friends in the northern part of the state and in Tacoma, Washington, Friday (tomorrow) morning.

cumulative levies in all A. and I. districts in unincorporated territory.

"Effect of the steps taken by a few bondholders is a threat to the success of a well-balanced program to which county officials have given their efforts during the past three years," Kennedy said. "In my opinion, while in some districts it will not be to the best interests of the property owners, but will merely serve to bring the special assessment problem to a culmination.

"In other districts, especially those under 30 percent delinquent, which the special assessment committee recommends that money be paid into district funds and thus reduce the annual levy against property owners, a great hardship will result."

As an example of the effect of the suits, the supervisors will be forced to levy \$140,000 against A. and I. 64, for the improvement of Anaheim-Telegraph Road, whereas the normal levy is but \$27,000, Kennedy explained. In many other districts the levy would be practically doubled.

STORY 1

Continued from Page 1

on the district. Edington's Crude Oil Drilling Company is preparing to set surface casing on its project close to the old McKinley Home for Boys property where a well was drilled for water in the early part of the century and oil sand was discovered. Crude Oil is reported to have picked up at 1,100 feet a series of hard shale that is encountered at 2,100 feet in the Redondo field.

It is reported that Universal Consolidated is planning a test near 182nd street and Vermont avenue. Marl Oil, nearby, is down 5,500 feet in shale with streaks of oil sand.

In addition to Poser, nearly every other prominent geologist in the southland has agreed that the district is one of the most promising they have seen for some time.

A report recently prepared by another geological firm agrees with Poser and sets the structure from the southeast to northwest running from about 192nd street and Main northwest in an egg-shape to Riverside, Redondo and Cypress.

That the area should have waited so long for drilling activity is another of those quirks in the oil business.

From the time of discovery of the first oil sand just below 500

feet, the district has waited more than 30 years for a conclusive test. A perfect circle of wells has been drilled around the "structure" but all of these wildcats have been from a half mile to two miles away from what is now believed to be the productive area. The closest of these encountered some showings but not enough. Now, wells are moving into the center of play.

Oil Wells Sink In Sea
BAKU, U.S.S.R. (U.P.)—Sinking of oil wells in the sea has been organized with the aid of motor launches near the coast of the Apscheron Peninsula in the Caspian Sea.

Fanny C. King
Notary Public

INSURANCE REAL ESTATE BROKER
"We Want Listings"
1324 Sartori Ph. 174

NATIONAL FOOD SAFETY CHECK-UP

IS YOUR REFRIGERATOR COLD ENOUGH?

IF NOT THERE'S DANGER!
Check Up!

COME IN AND GET YOUR **Free COLD-GAUGE**

While Limited Supply Lasts

● Food spoilage cannot always be detected by sight, taste or smell. So make certain your food is safe against temperatures under 50°. Above this point, there is danger! Don't wait. Test your refrigerator at once with this accurate, valuable Cold-Gauge. We give it free to adults. Come in for yours now!

STAR DEPARTMENT STORE
SARTORI AT POST PHONE 625

AUTHORIZED DEALER FOR FRIGIDAIRE
made only by GENERAL MOTORS

Like the GRIP OF A FRIENDLY HAND supporting your foot!



Put your hand firmly under the arch of your foot. The firm support you feel is just the effect this Jarman Friendly shoe will give your foot.

This "Friendly Grip" supports the arch and is your assurance of foot comfort. It is built in the shoe with the same smart style that is found in all our Jarman Friendly shoes.

Jarman "Friendly Grip" Styles \$5

LEVY'S HAS BEEN THE "BACK-TO-SCHOOL" STORE FOR 18 YEARS.

Complete Stocks of Boys' and Girls' School Needs

Girls' School Dresses
Washable Prints. Sizes 6 to 14. **\$1.29**

Girls' Bobby Socks
Phoenix. All Sizes. 29c and **25c**

Boys' Yankon Longies
Ideal for School. Sizes 6 to 12. **\$1.29**

Just Arrived!
Complete Fall Lines of **Red Goose Shoes**



"One visit away from home proved to me that GAS COOKS BETTER and COSTS LESS"

All it takes to appreciate the convenience and economy of natural gas cooking is to cook with another kind of fuel for a change! Look into it next time you take a trip away from home, some place where they haven't natural gas!

You'll find gas saves as much as two dollars out of every three that you would have to pay for cooking with the next most modern kind of cooking heat. And besides, with natural gas you have instant starting (no waiting), instant stopping (no waste) and complete adjustment of cooking temperatures.

Many improvements and conveniences have been added to the new modern gas ranges of all makes. See them at your dealer's or at the gas company's office.

SOUTHERN CALIFORNIA GAS COMPANY



SAM LEVY

DEPARTMENT STORE

1307-1313 Sartori Avenue TORRANCE Phone 121-W