



**A NEW NAME  
A NEW SERVICE**

\* SANTA FE TRAILWAYS, formerly Santa Fe Trail System, in coordination with Santa Fe Ry., offers not only a new name, but a new service that is more than just bus transportation. Roomy, lavatory equipped buses; Harvey Hotel rest stops; fast schedules; three full Harvey meals as low as \$1 a day; low fares everywhere, Chicago for example, \$29.50.

**GRAND CANYON ROUTE!**

101 American Ave., Phone 62706, or 127 E. Ocean Ave., Phone 63785, LONG BEACH. Central Bus Depot, 638 So. Main St., Ph. TR-3403, LOS ANGELES. Or any Santa Fe Railway Agent.

**THE SANTA FE TRAILWAYS**

**FREE!**

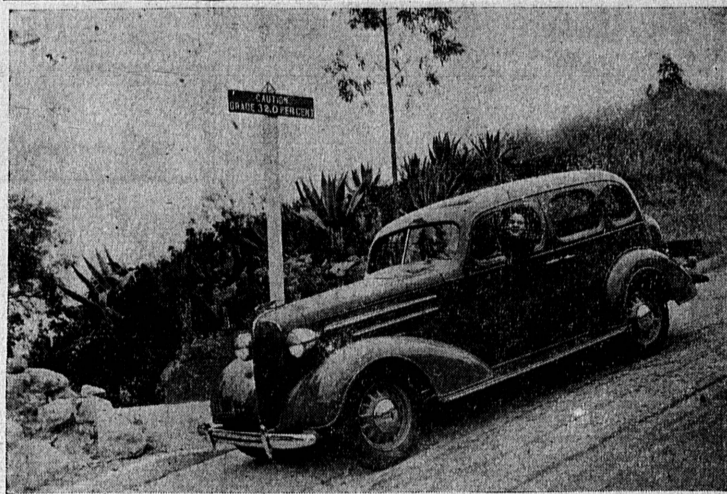
JULY 13, 14, 15

Dr. Niblack, from Lincoln, Nebraska, Specializing in Health Examinations with the Aid of Electrical Instruments of his Own Laboratories, will assist me in giving you a complete Health Examination. These Instruments will locate the Organs that are causing your ailments and producing poisons in the blood stream, which in turn means Poor Health. Before it is possible for you to obtain better health, it is necessary that you determine the Real Cause. This is accomplished in a fascinating manner without asking you any questions, with the aid of Dr. Niblack's new Electrical Instrument. One Examination will be given Free to each family on the above dates, at my office; 9 a. m. to 5 p. m.

**Dr. L. D. Sims**

200 So. Pacific Ave.  
Redondo Beach, Calif.

**Demonstrate Advantages of Chevrolet Hydraulic Brakes**

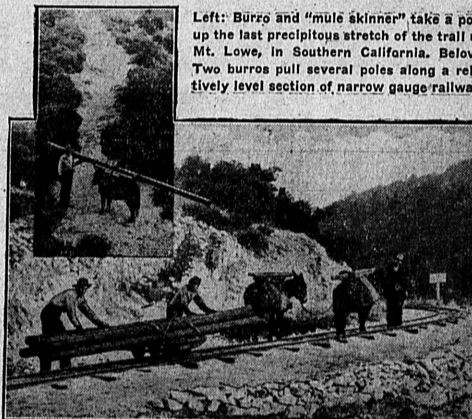


The positive action of the 1936 Chevrolet's perfected hydraulic brakes, which react immediately to the slightest touch on the brake pedal, was recently demonstrated on the 32 per cent grade of Fargo Street hill in Los Angeles. With petit Anna Dale Steers driving, the brakes were thoroughly tested, and displayed their safety features in bringing the car to a complete stop with a minimum of pedal pressure. In addition to their safety, another feature of the Chevrolet brakes is the ease of adjustment, made at a single adjusting point with a screw-driver as a lever.

**Last Rites Are Held On Monday**

Last rites for Mrs. Caroline Fitzpatrick, 1752 Border avenue, who passed away on July 1, were held Monday afternoon at 3 o'clock from Stone & Myers chapel. Rev. Francis Foote, of the Hermosa Beach Episcopal church, officiated. Interment was made at Inglewood Park cemetery.

**Telephone Men Rely on Burros to Help Transport Poles Up Mt. Lowe**



Left: Burro and "mule skinner" take a pole up the last precipitous stretch of the trail up Mt. Lowe, in Southern California. Below: Two burros pull several poles along a relatively level section of narrow gauge railway.

When a telephone line was recently built up the precipitous slopes of Mt. Lowe, 5,230 feet high, in California, known since 1895 to hundreds of thousands of tourists who have traveled its famous inclined railway or taken the difficult trail to the top, the same type of sure-footed burros that have carried many a prospector's grubstake to a gold hoard in western mountains were used for the transportation of telephone poles.

Telephone service to Mt. Lowe Tavern, 5,050 feet up, for years depended upon a telephone circuit superimposed upon wires of the electric railway, which made it subject to electric power interference. This circuit was owned by the tavern, and was connected with wires of the Southern California Telephone Company, which has now replaced it with the new line, which runs to Pasadena.

Few telephone poles have had as varied transportation up a mountainside. Carried by railroad to the

base of Mt. Lowe, they were loaded upon tractors and hauled for the first leg of the journey over an old mountain road with a 75 per cent grade.

This brought them to the inclined railway, where they filled roles of guest passengers aboard the cable cars, with the seats removed. This part of the trip covered 3,000 feet horizontally and 1,200 feet vertically with 62 per cent grades.

Then a narrow gauge railway carried the poles another three miles, more or less horizontally, on a third leg toward the tavern.

Here the trail becomes so tortuous that only sure-footed burros would suffice for transport, with one pole to a burro. The center of each pole was balanced across a regular pack saddle, and a "mule skinner" assigned to help steer the load and balance it along the winding, precipitous trail.

Copper wire in 75 pound lengths was also carried up the steep trail by the long-eared, long-haired, sad-eyed little animals.

CALL 444 FOR AD SERVICE

**Compton Paper Incorporates**

Articles of incorporation for the Herald Publishing Company, listing five Compton residents as directors, were filed with the county clerk in Los Angeles today.

Directors are Charles R. Eshelman and Ralph L. Eshelman, both of whom have been publishing the Compton Herald for several years, Clifton S. Smith, owner of a wholesale grocery and three large markets in the southern part of the county, S. M. Smith, and Warren W. Butler, for some years editor of the Compton News-Tribune. Capital stock is divided into 100 shares.

Toledo Construction Booms TOLEDO, (U.P.)—Construction in Toledo for the first five months of 1936 exceeded the entire amount of building for any single year since 1930, latest figures reveal.

**MANY ONCE DEAF NOW HEAR AGAIN**

Many who once were "hard of hearing" have solved their problem through the prescription of a noted Vienna specialist. It is called OURINE. Before you invest in expensive hearing devices, try one bottle of OURINE. See if it doesn't help you, too, to banish earache, ringing and buzzing in ears, earache, chronic headache, and enable you to hear better. Relief is quick—and the cost is only a few cents a day. Money back guarantee. Get OURINE today.—Dolley Drug Co., Torrance.—Adv.

**LOWER PRICES** *Two-Way* **SAVINGS**

*Higher Quality*

**INDEPENDENT MARKET CO.**

• Quality Merchandise at Consistent Cut-Rate Prices.  
• Satisfaction Guaranteed or Your Money Cheerfully Refunded.

• Open Every Day of the Week, including Sundays for Your Convenience.  
• Hours 7 A. M. to 8:30 P. M. Daily. Saturday 7 A. M. to 10 P. M.

1216 EL PRADO Phone 364  
Specials Friday and Saturday

**We Cash Payroll Checks Free Delivery**

**GROCERIES**

**OLEO**  
Silver Nut Wilson's Certified **10 1/2c**

Armour's Choice Quality Bulk **Peanut Butter 10c/lb**

OUR SPECIAL BLEND—All Purpose Grind  
**COFFEE, 1-Lb. bag 12c**  
**KOOL AID 3 for 11c**  
Assorted Flavors—Reg. 5c

**PUREX, Quart 8c**  
Purex is Different  
1/2-Gal. 13c

**SOLIDS—2nd Quality BUTTER 33 1/2c/lb**  
Local—Large Fresh, Guaranteed Doz. **26 1/2c**

**EGGS**  
Pasteurized. Quart **8c**

**MILK**

**BREAD**  
Fresh Daily  
1-Lb. Loaf **5c**  
1 1/2-Lb. Loaf **7c**

**PIES**  
Fresh Daily  
Banana, Cherry, Apple, Pineapple, Coconut, Lemon, Boston Cream, etc.  
Reg. 15c **SPECIAL 11c**

Breakfast Food for Youngsters Lge. Pkg. **10c**

**WHEATIES**  
BANNER—Tall Cans **3 for 17c**

**MILK**  
Large Pkg. **27 1/2c**

**WHITE KING SOAP**  
VAL VITA **6 for 17c**

**TOMATO SAUCE**

**MILK** CARNATION Tall Cans **3 for 19c**  
ALPINE Small Cans **3 for 10c**  
PET

**CRACKERS** **8 1/2c**  
Full 1-Lb. box—Soda or Graham

**POTATO CHIPS, 5c pkg. 4c**  
10c package 8c 25c package 15c

**MEATS**

GUARANTEED GOVERNMENT Graded A-1 Branded Genuine **BABY BEEF**

Round Steak ..... Lb. 19c  
Sirloin or Porterhouse Steaks ..... Lb. 23c  
Rib Steaks, each 10c; ..... 2 for 15c  
Round Steak Ground ..... Lb. 17 1/2c  
Swiss Steak ..... Lb. 17c  
Cube Steaks ..... 6 for 25c

From Baby Beef—Lean, Meaty **BOILING BEEF Lb. 4c**

Eastern Corn Fed Government Graded **PORK ROASTS Lb. 16 1/2c**

New Process Made Tender—12 to 15 Lbs. **SKINNED HAM Lb. 29 1/2c**  
The Ham you can cut with a spoon

New Process Sugar-Cured Eastern **PICNIC HAMS Lb. 19 1/2c**

**Old Wisconsin Recipe ALL MEAT**  
Wiensers, Coneyes, Bologna, Kosher Style Salami, Liver Sausage, Minced Ham **13c**

Easter Sugar-Cured Fancy **Sliced Bacon lb. 27 1/2c**  
By Piece ..... lb. 26 1/2c

Sugar-Cured Eastern **Bacon Squares Lb. 15 1/2c**

From Baby Beef Chunks **BEEF ROAST**

**FANCY CUTS Lb. 8c**  
**CHOICE CUTS Lb. 10c**  
**CENTER CUTS Lb. 12 1/2c**  
**SHORTENING 1 Pkg. 9c**  
In Sanitary Cartons

**COFFEE**

HILL BROS. Red Can ..... Lb. 26 1/2c  
2 lbs. can 50c

FOLGER'S, ..... Lb. 26 1/2c  
2 lb. can 50c

M. J. B. ..... Lb. 26 1/2c  
BEN HUR ..... Lb. 26 1/2c  
MAXWELL HOUSE ..... Lb. 25 1/2c

WHITE SHOE POLISH—Does not rub off **7c**

**SHINOLA 6c**

**LARGE PKG. JERSEY CORN FLAKES 14c**

QUALITY BRAND—Broken Slices, No. 2 1/2 can **14c**

**PINEAPPLE 3 for 25c**

DEL MONTE—No. 2 can **3 for 25c**

**TOMATO JUICE Gal. 15c**  
BULK—First Quality (Please bring your container)

**CANNING SUPPLIES**

CERTO ..... 18c JAR LIDS ..... 9c  
JAR COVERS, doz. .... 19c JAR RUBBERS ..... 5c  
PARAFFINE WAX ..... 9 1/2c

**SALE OF LAMB**

GENUINE GOVERNMENT GRADED Branded A-1 Spring Lamb  
(Don't confuse this with Yearling Lamb or Mutton—We carry Spring Lamb exclusively)

**LEG OF LAMB Lb. 19 1/2c**  
**RIB CHOPS Lb. 20c**  
**LOIN CHOPS Lb. 23c**  
**LAMB STEW Lb. 7 1/2c**  
**LAMB SHOULDERS Lb. 13 1/2c**

Fresh Ground **HAMBURGER, 3 Lbs. 25c; 1 Lb. 10c**

Lean Tender **BOILED HAM Lb. 39 1/2c**

**BAKERY**

WE CARRY A COMPLETE LINE OF BAKERY GOODS

Delivered Fresh from Our Ovens. Come in and see our wide selection.

**VEGETABLES**

Last Chance for Canning

YOUNGBERRIES, crate of 30 baskets... 75c  
Baskets ..... 2 for 5c

**STRAWBERRIES**—  
Tray of large size berries ..... 65c

PLUMS, lug, Fancy ..... 39c

APRICOTS, lug, Fancy ..... 49c

Firm Local **Tomatoes 5 lbs. for 10c**

**Watermelon**  
Klondyke or Battle-snake—we plug them—we guarantee them.  
**1 lb. 1c**

**DELICACIES**

POTATO SALAD ..... pt. **15c**

MACARONI SALAD ..... pt. **15c**

ROAST BEEF, ..... Lb. **35c**

ROAST PORK ..... lb. **35c**

Try Our Delicious BAKED HAM

**NORGE**

can give you **MORE COLD GREATER SAVINGS LONGER SERVICE**

because only Norge has the Rollator!

Only Norge has the Rollator Compressor that is able to deliver more cold than you'll ever need—and the over-all economy that goes with it. It gives you both the meter-economy of limited current—and the meat-and-food economy of unlimited cold. This is the most positive proof that can be offered that Norge is the best refrigerator investment you can make. See the Norge before you buy.

● Only Norge has the Rollator Compressor that is able to deliver more cold than you'll ever need—and the over-all economy that goes with it. It gives you both the meter-economy of limited current—and the meat-and-food economy of unlimited cold. This is the most positive proof that can be offered that Norge is the best refrigerator investment you can make. See the Norge before you buy.

**NORGE ORIGINATED 30 VITAL IMPROVEMENTS IN REFRIGERATION**

Choose Norge and you'll get a refrigerator with usable, valuable features that will still be modern years from now. This partial list shows you how Norge leads in conveniences:

\* Press Action Laxlatch \* Combination Bottle and Dairy Rack \* Sliding Utility Basket \* Adjustable Shelf \* Improved Automatic Flood Light \* Closely Spaced Shelf Bars \* Many other improvements and refinements.

**Miller Furniture Co.**  
1513 CABRILLO, Torrance Ph. 545

DOWN PAYMENT AS LOW AS **\$5.00**