

"BETTER" LUBRICATION
Atlas Tires and Batteries—Standard Oil Products
C. B. MITCHELL
Authorized Distributor—Standard Stations, Inc.
Carson and Cabrillo Phone Torrance 765

AMORTIZED HOME LOANS

... to responsible parties

• Now is the time to refinance your home loan for reduced payments and low interest rates.

• CLASS "A" Single family home loans, are made on homes less than five years old.
Payments \$9.50 per \$1000
Including Interest at 6.6%

• CLASS "B" Loans are made on Homes five years of age or older.
Payments \$10.00 per \$1000
Including Interest at 7.2%

• Limited amount of funds available, file your Loan Application at once.

AMERICAN MUTUAL
Building & Loan ASSOCIATION

Member FEDERAL HOME LOAN BANK SYSTEM

Redondo 3351 210 South Pacific Ave.

Miniature Earthquakes Detect Fields Of Oil and Gas In Southern California



City Treasury Replenished By Tax Money

Installation of Taxes Credited to Torrance This Week

Another \$13,790.72 in municipal taxes levied for 1935-36 was credited on the books of the city treasurer of Torrance this week, following receipt of the second apportionment of municipal taxes from the county tax collector, which acts as collection agent for 38 cities in the county.

Still another apportionment will be made the latter part of the month, and a final apportionment of the first installment taxes will be made early in January, according to James L. Lowery, chief clerk of the accounting division.

The clerical staff of several dozen persons in the office of County Tax Collector H. L. Byram still is engaged in opening the thousands of letters containing remittances for taxes, mailed before the December 5 deadline. It is estimated it will be the first week in January before all contents of the envelopes are credited to the proper individuals making the remittances.

A total of some \$2,900,000 was apportioned to the 38 cities, school districts and special districts, including special assessment areas, in the second installment. Los Angeles of course received the larger amount, \$724,125.84.

The Metropolitan water district received \$103,792 from taxpayers in Los Angeles and nine other cities in Los Angeles county on the second apportionment. Of the various tax rates this year in the county, that of the Metropolitan water district shows the greatest increase, amounting to 100 percent, or a jump from 10 to 20 cents.

Dentist's Estate Left to Widow

Letters testamentary to the estate of her late brother, Dr. Walter F. Hammond, were sought in a petition filed in Los Angeles superior court this week by Mrs. Maud Hammond Welch, of Torrance.

The estate consists of dental equipment, office furniture and personal effects, it was stated, all of which were bequeathed to the widow in San Francisco.

Dr. Hammond died last December 10. Mrs. Welch resides at 1604 Juniper avenue, according to the petition filed in her behalf by Attorney Torrance C. Welch, of Torrance.

Lights Guide Worshippers BRIGHTON, Eng. (U.P.)—When the green light is showing—sit! That is the rule which now governs the seating accommodation at the Union Congregational church in Brighton, where a system of control has been devised by the minister.

FAMOUS EVENTS The British captured Fort Niagara December 19, 1814. Washington went into winter quarters at Valley Forge, 1777.

Miniature earthquakes—so slight that they can be noticed within a radius of only a few feet—are now being used by scientists for the detection of hitherto unknown fields of oil and natural gas in California.

Sensitive seismographs record the earth vibrations caused by the explosion of small charges of dynamite in shallow holes. Skillful interpretation of the seismographic records brings to light definite information on whether or not untapped fields of oil and natural gas may lie far beneath the surface.

This modern method has been found extremely valuable in instances where there were no surface geophysical indications that oil or natural gas is to be found in that locality. Recent discoveries of new fields by means of these scientifically planned miniature earthquakes include new fields at Mountain View, Buena Vista Lake and Semitropic, all of which are in the San Joaquin valley.

A comprehensive program of natural gas pipeline construction is now being undertaken by gas companies in Southern California to tie in these important newly-discovered gas and oil fields in the San Joaquin valley with main transmission lines which transport this modern fuel over 200 miles from Kettleman Hills to Los Angeles, according to J. F. Murray, division manager of the Southern California Gas Company.

"Projects costing nearly three-quarters of a million dollars and employing several hundred men are scheduled for completion within the next two months," Mr. Murray said. These will augment the already adequate supply provided by existing transmission facilities for peak demands in Southern California during the coming winter and for the future.

One line will tie in the Mountain View field with the main trunk line near the Grapevine.

The new line, 22 miles in length, will be of 10-inch welded pipe.

Other projects include a six-mile 10-inch feeder from the new Buena Vista Lake gas well to tie in with main transmission lines near Taft; a 9 1/2-mile line from Semitropic-Buttonwillow gas field, to be constructed of 12- and 10-inch pipe; and 25 miles of 10-, 8- and 8-inch parallel line from Kettleman Hills field to Fresno and Visalia via Lemoore.

The Mountain View field, near Bakersfield, is a narrow strip about four miles in length, with 95 producing wells. The new line will have a capacity of 15,000,000 cubic feet a day and will play an important part in minimizing wastage of gas in this field, as well as augmenting already adequate reserves of gas from older fields.

The Buena Vista lake line will tie in with the Ohio Oil Company's discovery gas well, which is capable of a steady production of 8,000,000 cubic feet of gas a day.

Semitropic field, further north, in the San Joaquin valley near Wasco, was discovered March 8 of this year when Standard Oil Company completed a gas well at 3,200 feet. Subsequent to this discovery the area became active, and to date 17 gas wells have been completed and approximately 3,000 acres are considered as proven.

These new fields have made large additions to reserves of natural gas already developed in older natural gas fields of the state.

For FREE Theatre Tickets, read the Business Directory.

New Chairman Of Boy Scout Work Is Named

Torrance Representatives Meet With New Harbor District Chief

Donald Monroe, for 20 years interested in Scout work in New York, and member of the New York council, has been transferred to California to take charge of the work in the harbor district. Mr. Monroe met with members of Torrance organizations which sponsor Scout troops at a luncheon at the McKinley Inn Monday, where a reorganization of personnel for Torrance took place, and plans were made to bring back Scouting to its former high level here.

Meeting with Mr. Monroe were Frank Buffington and Dr. R. A. Bingham of the Rotary Club, Robert L. Lewellen of the Kiwanis Club and Tony Figueredo of the Moose lodge.

Mr. Buffington was appointed chairman of Scout work in Torrance and Lewellen was named district commissioner, succeed-

Local Girls Are Gold Seal Bearers

Alice Burger, of Torrance, and Jane Louise Byham, of Lomita, are included among the 157 students now enrolled at the University of Southern California who are California Gold Seal Bearers for superior scholarship in high school, according to Theron Clark, registrar at the Trojan institution.

Ing W. T. Jones who has moved from the city, Buffington will represent Torrance on the Los Angeles council.

Numerous plans were discussed for increasing troop membership and bringing about greater interest in the work among the boys of Torrance. Three or four new troops will be organized.

Torrance will take over the management of its own Scout affairs, co-operating with Mr. Monroe in the general management.

Interwoven Socks

Silk, Lisle or Wool
35c, 50c, 75c
Others at 25c, 29c

Giolite Magic Cigarette Lighter \$1.00

ARROW TIES \$1.00
Durable Construction Styled Right

Tie Chains Collar Bars Gold or Silver 50c
All Leather Zipper BILLFOLDS \$1, \$1.25, \$1.50, \$1.95

ARROW SHIRTS \$6.95, \$7.95, \$8.50
Summer's LEATHER COATS

Sandy & Scotty

1307 El Prado TORRANCE Near Sartori Ave.

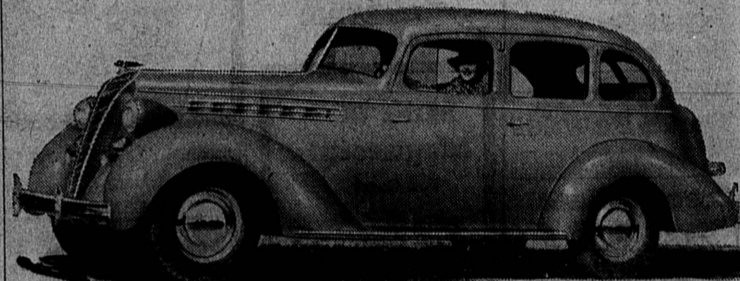
We're riding to the top with the winners...

... we are now representing

HUDSON and TERRAPLANE

in Torrance and vicinity

L. JAMES JENKINS
1316 Cabrillo Avenue



THE NEW 1936 HUDSONS and TERRAPLANES ARE HERE

Cars that sparkle with fresh, new beauty. That give you actually 20% more room than any other popular automobile. That have more important new features than any automobile ever before offered in a single year. A wholly new principle—Radial Safety Control (patent applied for)—that makes riding safer, steering safer, stopping safer. Combined with this safety chassis, the protection of America's first bodies all of steel—now stronger, more beautiful than ever, with an improved seamless steel roof.

The Electric Hand, too, makes driving safer and shifting easier. Under all this—the unbeatable performance, amazing economy and reliability you know so well in Hudsons and Terraplanes.

Come in today. See and drive a new 1936 Hudson or Terraplane.

\$595
and up, f. o. b. Detroit.
Standard group of accessories extra.

5 THINGS you never saw before

RADIAL SAFETY CONTROL (patent applied for)—a wholly new principle makes riding, steering and stopping safer than ever before.

DUO-AUTOMATIC HYDRAULIC BRAKES (patent applied for)—the first hydraulics with a separate safety braking system that takes hold automatically in emergencies.

RHYTHMIC RIDE—long, gentle, "natural rhythm" springs are free for the first time from steering and braking strains.

TRU-LINE STEERING—the car holds its direction steadily, unaffected by spring action, braking or road conditions.

AUTOMATIC DRAFT ELIMINATOR—now added to Hudson's and Terraplane's Year-Round Ventilation System to automatically equalize air pressures inside and outside the car—eliminating floor drafts.

\$595 and up for Terraplane (88 or 100 horsepower, 115-inch wheelbase); \$710 for Hudson Six (93 or 100 horsepower, 120-inch wheelbase); \$760 for Hudson Eight (113 or 124 horsepower, 120 and 127-inch wheelbase).

Holiday Special

2 Garments
90¢

CASH AND CARRY

Dress Up for the Holidays

Take Advantage of This Special Offer With Absolute Assurance of the Highest Quality Work Available Anywhere (Small Additional Charge for Fancy Garments)

NIFTY CLEANERS
1324 SARTORI AVENUE, TORRANCE
PHONE 174

Harvel's

Have **MOVED**

To Their New and Larger Location at
1530 Cravens Ave.
(Opposite the Fire Station)

We shall be pleased to greet all old or new customers at our new home which is equipped to render a more diversified service to motorists.

GOODRICH TIRES - WILLARD BATTERIES
GASOLINE - OILS - GREASES
SCIENTIFIC LUBRICATION BY LATEST TYPE EQUIPMENT
EXPERT IGNITION WORK AND TIRE REPAIRING

TELEPHONE 168

Be a REAL Santa Claus!

... give her a

Westinghouse Streamline REFRIGERATOR

No other gift can give so much lasting pleasure. Low prices and easy terms include \$5 for 5 YEARS' PROTECTION against service expense on the economical, trouble-free sealed-in mechanism. See a demonstration today and select your gift Westinghouse from our complete line of latest models.

"CHRISTMAS SURPRISE" PLAN PROVIDES BEAUTIFUL "ANNOUNCEMENT" VANITY CASE
Expensive chromium-plated vanity provided on all Christmas-gift orders. Contains card giving date of refrigerator delivery. Brings extra happiness Christmas morning. Ask about this delightful new plan.

No Payment Down ... 3 Years to Pay
Under FHA Plan Now Available to Renters and Home Owners

Torrance Electric Shop
1419 Marcelina Ave. Phone 567