

Gift Specials

Toaster Set
 • Electric Toaster
 • Tray
 • 2 Double Relish Trays
 All For Only
\$5.95
 A Special Low Price

Crystal
Console Sets
 • Fruit Bowl
 • 2 Double Candle Sticks
 All For Only
\$1.95
 An Amazing Value!

Lasting Electrical Gifts



Hamilton Beach Food Mixer, \$19.75 with Two Bowls
 Mixmasters, \$20.50
 Dormeyer Electric Mixers, \$16.75



Sillex-Style Coffee Makers Complete with Electric Stove
\$4.95



Waffle Irons
\$3.45 up

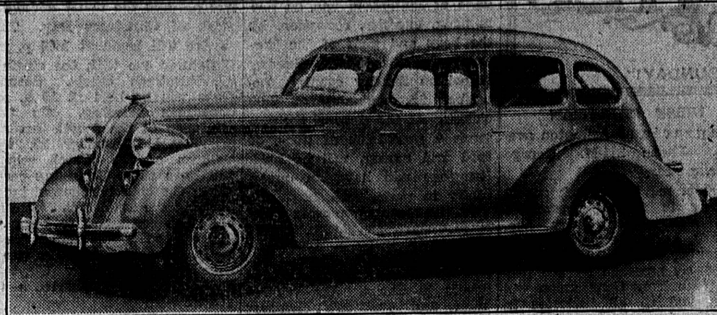


Electric Irons
\$1.95 up

WE BUY AND TRADE ANYTHING

MILLER
FURNITURE COMPANY
 1513 Cabrillo Ave. Phone 545
 TORRANCE

L. James Jenkins Is Appointed Dealer In Torrance For Hudson and Terraplane Cars



Terraplane Sedan—the roomiest car in the lowest price field. This car has full three-passenger width in both the front and rear seats.

L. James Jenkins, Willys 77 distributor of 1316 Cabrillo avenue, Torrance, announces his appointment as dealer in this territory of the Hudson and Terraplane motor cars.

Completely new and more modern than ever in appearance, more luxurious in style, and with a wealth of engineering development, the new Terraplane for 1936 are now on display at Jenkins show room. Not only do the new cars attain entirely new standards of beauty, but they incorporate safety engineering features to a degree never before found in automobile chassis and bodies. In addition, there are a number of innovations of a fundamental nature which no cars have ever had before.

Although these cars are still in the lowest price field, they are much bigger and finer than their predecessors of the same make. Of interest from a safety, as well as comfort standpoint, is the wholly new principle, radical safety control, which makes possible greater

safety in riding, steering and stopping. So marked a difference does this new front end system incorporate in the riding qualities of the car that the manufacturers of the Terraplane have given the name, Rhythmic Ride, to the result of the synchronized and unified suspension system.

This new front end system also introduces Tru-Line steering, bringing a new road sense to the steering wheel because of the accurate control of the steering system, regardless of road condition. Another new feature is the Duo-Automatic hydraulic brakes which incorporate a big husky hydraulic system with the double safety factor of an automatic reserve brake of the rotary-equalized mechanical type.

On the bodies, which have one-fifth more room inside than many cars selling at double the price, is the automatic draft eliminator—a feature added to Terraplane's all-year ventilation system which automatically equalizes air pressure inside and

outside the car and screens the air entering the body in connection with the ventilating system.

Mounted on a full 115-inch wheelbase and equipped with an 88 horsepower engine, and 100 horsepower available optionally, the car is not only roomier, but is capable of maintaining the reputation that Terraplane has established for performance. This car carries on the tradition of the models which have broken AAA records for speed, economy and hill climbing, all over the country. The bodies are all of steel, having a steel floor, steel roof and a complete steel structure throughout. The electric hand which was introduced on the Terraplane last year for smoother, safer, faster, gear-shifting, is optional on all models. The Terraplane is made in two series—Deluxe and Custom. A full line of bodies being available in either series.

In the bodies extra leg room, elbow room and shoulder room, has been provided. The sedans are full six-passenger capacity with seats three inches wider front and rear than those normally considered standard. The seats are 50 inches wide in front and 49 inches in the rear. At shoulder and elbow height, 58 inches of width is provided above the arm rest, and because of the three-inch longer wheelbase, more leg room is provided lengthwise.

The body is more completely insulated than any bodies previously made. The sound insulation of the Terraplane bodies for 1936 has been carried to an extremely high standard. Various insulating materials are employed to damp out any possible vibration.

The introduction of automatic draft elimination in the Terraplane for 1936 brings a feature to this low price car which will be found for the first time in cars at any price. The system insures a supply of clean, fresh air to the occupants of the cars. It completes the all-year ventilating system in that it filters the incoming air supply, permitting air to only enter the car at a definite point when the ventilating system is in use.

Safeway Heartily In Accord With New Social Security Legislation

California's new Unemployment Reserves Commission today was offered the full co-operation of Safeway Stores, Inc., in administering the state's Unemployment Reserve Act, and the Federal Social Security Act, both of which are to become effective on January 1.

Provisions of both laws have been closely studied by officials of Safeway Stores who are now prepared to carry them out in the future interests of their employees throughout California.

Safeway's officials met with members of the commission, recently appointed to administer the act in California, and advised them of their desire to assist in every possible way in preparing for the proper execution of the law in this state.

"It is our desire to see that every feature of the new measures is properly carried out by our company in the interest of our employees," L. A. Warren, president of Safeway Stores, Inc., informed the commission.

"Establishment of adequate social and economic safeguards for the welfare of employees and their dependents has always been of great concern to our company," Warren said.

"Four years ago we established a system ourselves where

by our employees and their families would be protected against financial losses caused by sickness, accidents, or death through a program of free insurance administered by a newly established Safeway Employees Association.

"Every employe of Safeway is afforded free accident, health, and life insurance, and in addition is enabled to enjoy a broader social contact with his fellow workers. Safeway has always had a genuine concern for the welfare of its personnel. This is demonstrated with the payment of good wages, good working conditions, opportunities for promotion, and the enjoyment of greater social, fraternal and protective benefits through the Safeway Employees Association.

"Consequently we feel that the intent of both the California Unemployment Reserve Act and the Federal Social Security Act has long been part of the spirit of Safeway as evidenced by its record in providing for the future welfare of its personnel.

"As a result, we naturally are able to promptly provide for the incorporation of the provisions of the two new laws in the business operation of our company. We shall thus do everything within our power to help the new commission in its work of administering the law in this state."

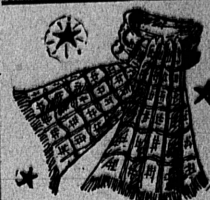
College Girls Taller

PAINESVILLE, O. (U.P.)—Freshman girls at Lake Erie college are lighter than those which entered three years ago, but they are taller, and have greater lung capacity and fewer tonsils. Fewer of the newcomers smoke.

Call Mothers Rabbit

COLUMBIA, Mo. (U.P.)—A very strange friendship is that of Sabra Ann Gordon's calf and a white rabbit. The two animals are together constantly. The rabbit sleeps between the calf's feet.

Torpedo For Mail Designed LONDON. (U.P.)—A mail-carrying torpedo has been designed by Captain A. E. P. Birtton, inventor of the "picket" torpedo, and is to be tested across the English Channel. It can carry 300 letters.



GAY, COLORFUL SCARFS
 Make Lovely Gifts
 A Large Selection to Choose From

49c



CHILDREN'S COTTON

FROCKS
 (some with panties)
88c to \$1.50

ARTISTS' and RUSSIAN SMOCKS
 In Black and Many Colors
\$1.95

See Our Fine Display of Etchings by Lepere and A. Brouet

Dorothy Louise Shop
 1415 Marcelina
 (Near the New Postoffice)

GIFTS CREDIT

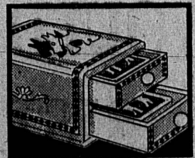
Where It Really Is Convenient

LOOK

Not only do we carry Bulovas, but a large selection of other watches, including...

- HAMILTON
- GRUEN
- ELGIN
- WALTHAM

100 Different Models To Choose From



ENCORE!

So successful was our sale "Greater Torrance Days" on the above pictured gift item we were forced to buy again... but only could we obtain a limited number. Attractive utility boxes with two decks, gilt-edged scotty playing cards.

Complete for

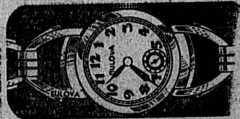
79c

— NAME YOUR OWN TERMS —

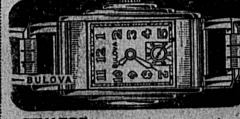
Howard's
 TORRANCE

JEWELERS
 1503 CABRILLO AVE.

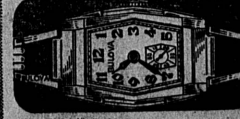
For HIM—
Bulova



COMMODORE... 15 jewels, 10-kt. white rolled gold plate... \$34.75
 10-kt. natural rolled gold plate... \$33.75



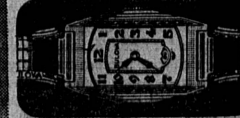
SENATOR... 15 jewels, 10-kt. white rolled gold plate... \$24.75
 10-kt. natural rolled gold plate... \$23.75



HANCOCK... 15 jewels, 10-kt. white rolled gold plate... \$24.75
 10-kt. natural rolled gold plate... \$23.75



BRETON... 21 jewels, 10-kt. natural gold filled... \$37.50
 14-kt. natural solid gold with solid gold band to match... \$100.00



PRESIDENT... 21 jewels, 10-kt. white rolled gold plate or 10-kt. natural gold filled... \$49.50

White Slaver



Accused of being the head of a white slave ring operating along the Pacific Coast, Leon I. Greenberg was arrested in Los Angeles by Department of Justice agents and brought to San Francisco for arraignment.

The Beneficiary under said Deed or Transfer, by reason of a breach or default in the obligations secured thereby, heretofore executed and delivered to undersigned a written Declaration of Default and Demand for Sale and written Notice of Breach and of Election to cause the undersigned to sell said property to satisfy said obligations, and thereafter, on September 8th, 1935, the undersigned, in accordance therewith, caused Notice of Breach and of Election to be recorded in Book 13673, Page 156, of Official Records in said Recorder's Office.

Dated December 19, 1935.
FARMERS AND MERCHANTS TRUST COMPANY OF LONG BEACH
 By H. V. KETCHERSIDE, President.

By H. I. STEWART, Asst. Secretary.

No. 420-1800. (SEAL)
 Dec. 19-26-Jan. 2.

ANNOUNCEMENT!

Dick Pullman

Former operator of the Union Oil Station at Cravens and Marcelina
 NOW ASSOCIATED with

Ralph Harder

at the complete and up-to-the-minute independently operated station of

GENERAL PETROLEUM

El Prado and Carson Phone 789

GOOD NEWS FOR LATE SHOPPERS!

Here's a store that's abundantly prepared for tardy gift shoppers... with a most complete stock of Gifts for Every Member of the Family.

*** OPEN ALL DAY CHRISTMAS ***



EXQUISITE TOILETRIES

* There's a whiff of romance in these lovely gifts. The spicy fragrance of the Orient, the rich scent of rose gardens in full bloom.

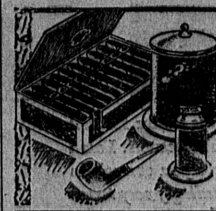
You'll find her favorite perfume and other toiletries at Dolley's... many in charming Gift Sets and Gay Holiday wrappings.

Christmas just isn't complete for the Girls without such gifts, and you can't go wrong if you buy at Dolley's.

Everybody Writes

* So, of course Stationery is sure to be appreciated, especially if you choose from our well selected display.

25c to \$1.00



For the Smoker!

GRANGER CUT, in Full Pound Xmas Packs... 69c
 VELVET Smoking Tobacco, Full Pound Cans... 73c
 MEDICO PIPES... 98c
 CIGARS, in Xmas Wrappings, As Low As, Box... 25c

GIFT CHESTS OF CHOICE LIQUORS TOYS and GAMES FOR THE CHILDREN

Dolley Drug Co.

El Prado and Sartori—Torrance Phone 10