

### Evening High SCHOOL

By Principal G. L. Mowry

The Torrance evening school has added one more teacher to its faculty. Mrs. Paddelford will have charge of the typing every Monday night. This will enable her to give her whole attention to those who are just typing, start the beginners off right and correct the errors of the more advanced. It is an opportunity for those desiring skill in typing to acquire it under trained supervision.

A group of men in one shop is learning to weld, using acetylene. They have obtained the necessary gas and are making nice headway in acquiring their experience and skill. The Diesel engine class is getting under good headway. Mr. Alford gave out some mimeographed sheets describing some of the parts of the engine.

There is a strong possibility that a parent education class will be started in the near fu-

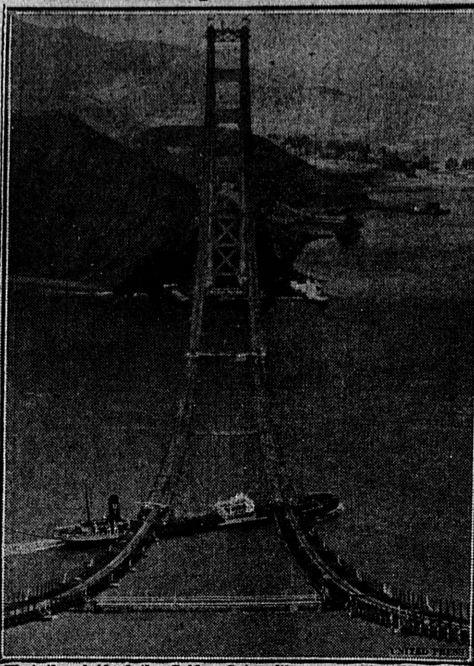
### LOCAL MEN given preview OF CHEVROLET

A preview of the new 1936 Chevrolet models was given R. J. Deininger, cashier of the Torrance National Bank, and Grover C. Whyte, publisher of the Torrance Herald, Tuesday. They were guests of Ed. Thompson, local Chevrolet dealer, at an all-day program held at the Biltmore hotel and theatre at Los Angeles. Luncheon was served at noon in the Biltmore Bowl, and prominent Chevrolet officials on the coast spoke. The preview program was attended by dealers throughout the entire Southwest district.

**Leg Broken In Kick At Bee**  
PAINESVILLE, O. (U.P.)—When a bee flew toward Richard Whitcomb, 16, he kicked at it so vigorously that he broke his leg. The bee escaped.

ture, meeting either on Monday or Tuesday evening from 7 to 9 o'clock. If you are interested come or telephone the school of your interest.

### Catwalk Spans Golden Gate



First they bridged the Golden Gate with many cables. Now they have built a redwood catwalk over the cables as part of the preliminary work to the spinning of the great 36 1/2-inch cables which will support the gigantic span. Here is the catwalk from the top of the 746-foot south tower across the Gate as a tanker enters the bay.

### A PARK WITH PERSONALITY

By VIRGINIA BROWN

Parks with personality are hard to find, but the moment a picnicer walks thru the gate of Banning park, he knows he has found one. Before him is the old-fashioned three-story Banning home, delightfully high and narrow, and directly in front is the big circle drive, an oval of green grass in which stands the first eucalyptus tree planted in Southern California. The visitor hesitates before stepping into the drive, almost expecting the rumble of carriage wheels and the prancing of hoofs, to come from the direction of the stables in back.

A walk thru the grounds brings no disappointment. The rambling paths, unexpected bridges, and small streams, the exotic plants—all prove the individuality of a park that has been changed as little as possible from a private estate.

Banning park has every right to its differentness for General Banning, its original owner, was an extraordinary man. General Banning came to California in 1851. He purchased 600 acres in the present harbor district and founded the town of Wilmington, naming it after a city

in his native state, Delaware. General Banning's interest was freighting and shipping and he built up an extensive business along this coast. His was the first railroad from San Pedro to Los Angeles, later sold to the Southern Pacific Company. He financed and made the well which supplied water for all irrigation, shipping and domestic purposes in the harbor district. General Banning first realized the possibilities of San Pedro harbor and two successful trips to Washington secured the appropriations for developing the harbor, dredging it and building the breakwater.

Ten years after arriving here, General Banning began his estate. All materials for his 18-room home came around Cape Horn. There are plans to make the house into a public museum using its original furnishings, sometime in the future. The present 20-acre grounds were made into a park in 1927. A complete playground has been added along with picnic facilities, and the park is one of the loveliest and most complete small parks around the harbor.

**Plane Spots Runaway Steer**  
LAURENS, Ia. (U.P.)—An airplane was used to capture a runaway steer. George Buckwalter, after hours of futile searching, chartered a plane. The steer was spotted lying in the corn. A larlat expert made the capture with directions from the pilot.

FREE THEATRE TICKETS!  
Turn to the Classified Page.



**Meet Mrs. Jones . . .**  
She's very popular at home because she saved Mr. Jones over \$15 this month.

**HOW?**  
By Using and Reading the CLASSIFIED ADS

## ASSOCIATED AGROGROCERS

INDIVIDUALLY OWNED STORES

## HALLOWE'EN SPECIALS

To help you plan a Better Party Economically

PRICES EFFECTIVE, OCTOBER 25, 26

- Swansdown Flour . . . 27c
- Bakers Premium Chocolate 1/2-lb. cake . . . 14c
- Wheaties . . . 2 for 21c

**BLACK SWAN SPECIALS**

CORN No. 2 Can

TOMATOES No. 2 1/2 Can

STRING BEANS No. 2 Can

SPINACH No. 2 1/2 Can

PUMPKIN No. 2 1/2 Can

**10c EA.**

- Cheese 1-lb. 22c 3 lbs. 59c
- New Walnuts, large Emerald Budded, lb. 21c
- Cherries, Red Bar sour Potted . . . 2 cans 25c

**Maxwell House Coffee 27c**

5-c. can . . .

- Sugar, Cane 10-lb. cloth bag . . . 52c
- Royal Gelatine, all flavors 3 for 17c
- NBC Ritz Crackers 1-lb. pkg. . . 23c

**10 FREE TRIPS** to Glorious Hawaii plus 500 PRIZES \$500 EACH IN GREAT \$10,000 CONTEST.

**BESS MILK** 1ge. **5 1/2c**

- Sperry Pancake Flour 5m. 9c Med. 17c
- Gold Medal Flour 5 lb. 28c 10 lb. 49c
- P & G Soap . . . 3 for 10c
- Oxydol . . . 1ge. 21c
- Ivory Soap Med. 6c Lge. 10c
- Camay Soap . . . 4 for 19c
- None Such Mince Meat 2 for 25c
- Ocean Spray Cranberry Sauce . . . can 16c
- Sugar, Beet 10 lb. cloth bag . . . 51c

**BISQUICK** 40-oz. Pkg. . . **31c**

and a Shirley Temple drinking mug FREE

- Black Swan Peaches No. 2 1/2 . . . 2 for 25c
- Black Swan Apricots No. 2 1/2 can . . . 2 for 29c
- Black Swan Pears No. 2 1/2 can . . . 15c
- Black Swan Fruit Cocktail No. 1 can . . . 2 for 25c
- Black Swan Pineapple Sliced, No. 2 1/2 can 17c
- Challenge Butter, lb. 37c

Libby Pineapple Juice **2 for 25c**

**RICHARD COLBURN** 1801 Cabrillo Avenue Torrance, Phone 110

**DOAN'S MARKET** 2223 Torrance Boulevard Torrance, Phone 486

**GEO. H. COLBURN** 645 Sartori Avenue Torrance, Phone 622

### Chevrolet Spent 25 Millions In Plant Expansion

Production Capacity Is Increased 25 Percent For 1936 Models

DETROIT, Oct. 24.—M. E. Coyle, president of the Chevrolet Motor Company, revealed today that the company has completed during the current year a \$25,000,000 program of plant expansion, increasing the production capacity of the ten Chevrolet assembly plants in the United States by 25 percent, and raising the capacity of the company's own manufacturing plants, devoted to the making of axles, engines, transmissions and other units to enable them to keep pace with the enlarged assembly plants.

Announcement of the virtual completion of the company's 1935 expansion plans was made by Mr. Coyle today as incidental to his statement that all ten Chevrolet assembly plants have been changed over within the last several weeks to produce new models of the Master deluxe and Standard Chevrolets for 1936, to be introduced in November, and that the manufacturing plants and assembly plants are already producing the new cars.

The expenditure of \$25,000,000 was made for the erection and equipment of new buildings at assembly and manufacturing plants, and for the re-equipment and complete modernization of existing buildings. With few exceptions, most of the operations were undertaken and carried out without announcement to the public, the list of completed improvements given out today being the first publication of details of the progress.

Production is increasing daily, Mr. Coyle said, and the company will have built an ample supply of the new models to stock its 10,000 dealers, including Pacific coast merchants, with the 1936 cars before their introduction early next month, and to insure immediate delivery to retail purchasers on and after announcement day. Increased schedules have been set for November and December, in order to replenish dealers' stocks as rapidly as is necessary to provide for quick deliveries to purchasers.

### Mexicans Hurt In Auto Accident

Police were called to 721 Amola avenue at 3:20 this morning where they found S. Rios and R. N. Verdugo in a damaged automobile, both injured, and escorted them to the Jared Sidney Torrance Memorial hospital. After receiving first aid Rios was taken to the city jail and booked on a charge of being drunk in an automobile. Verdugo is still at the hospital with a bad scalp wound. The men it is said had attended a wrestling match in Los Angeles last night and met with an accident on the way home, managed to make Torrance but were unable to get to their homes in the Pueblo.



**TROOP No. 3**  
Addison Smith, Reporter  
Troop No. 3 had an exceptionally good meeting Friday, October 18, by having a demonstration around the campfire of general scout camping, for the 15 Scouts who have joined the troop since the present scoutmaster, Mr. Jones, took over the troop about six months ago. After the demonstration the boys went back inside and each patrol put on an exhibit. Five minutes were allowed for the collection of their articles, and five minutes were allowed for the fixing of the exhibit. The contest was judged by Ronald Guy who is planning to join the troop soon. The contest was won by the Tiger patrol. Inspection was won by Jean Bordeaux.

The troop is planning to go on a hike Saturday, October 26. There were in attendance: Scouts, 19; officials, four; visitors, 1. The meeting was closed with the Great Scoutmaster's prayer.

**Teeth Wanted From WPA**  
MOBERLY, Mo. (U.P.)—A toothless man from the relief rolls appeared at the WPA office here and asked for a new set of teeth. "I read that you did bridgework," he remarked, "and that's what I came for."

**More 8th Graders Enrolled**  
HARRISBURGH, Pa. (U.P.)—Eighth grade enrollments in Pennsylvania's public schools have shown the largest percentage increase in 10 years, according to the state department of public instruction.

**Pupils Study Bees**  
MADISON, Wis. (U.P.)—The activities of a swarm of bees furnish interesting study for third grade pupils of Draper school here who watch them through a glassed-in hive with an outside connection set up in the class room.

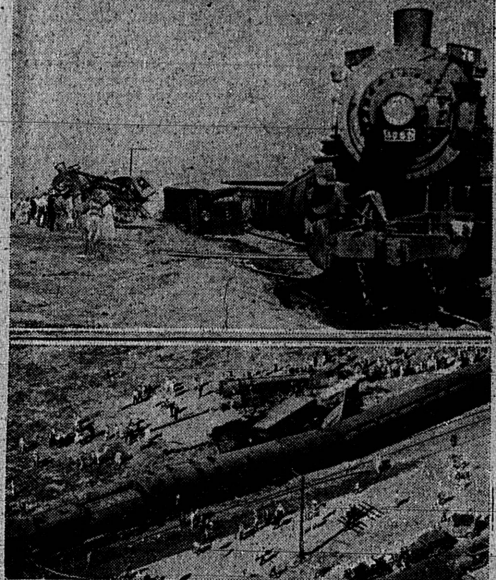
**Thief Loses \$200 Wallet**  
ALBEMARLE, N. C. (U.P.)—When a farmer residing near here visited his chicken house and discovered someone had stolen 100 hens, he also found the thief had dropped a purse containing \$200.20.

**OUR STOCK OF USED CARS MUST GO!**  
See Them Now  
**Walter G. Lynch**  
312 S. Catalina Redondo

**Sinus Trouble**  
head cold, hay fever, sniffle, sore throat, sore eyes, and all the other troubles that come with the change of season. Ask for a FREE TRIAL TONIC now. TODAY. Discover how thousands have found relief quickly with

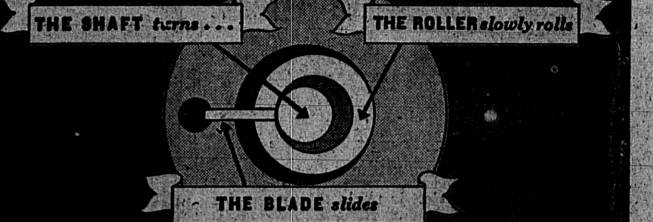
**Syn-O-Spray**  
Your free treatment now available at  
**DOLLEY DRUG CO.**  
Sartori and El Prado Torrance

### Four Hurt in Luxury Train Crash



Passing through Glendale, Calif., at 30 miles an hour, the crack Southern Pacific Lark struck the rear end of a heavily laden motor truck, demolished the vehicle, and derailed two locomotives and two coaches causing injuries to four passengers, none seriously.

## WITH BUT 3 MOVING PARTS



## the Rollator

(exclusive Norge cold-making mechanism)

is Surplus Powered. Sparing of Current. almost Everlasting!

- The most vitally important part of any refrigerator is the mechanism that makes the cold. On it depends every benefit you expect of electric refrigeration.
- The Rollator—exclusive with Norge—employs smooth, easy, rolling power instead of the hurried back-and-forth action of the ordinary refrigerating mechanism. The result is more cold for the current used, an almost everlasting mechanism which performs efficiently under all conditions.
- Don't buy a refrigerator for your home till you know the complete story of Rollator Refrigeration. It's a matter of good judgment to see the Norge before you buy.

## Now Available In COLORS

- To Harmonize With the Modern Kitchen,
- GREEN
  - TAN
  - PEACH

## Nothing Down 3 Years to Pay

Under FHA Plan NOW Available To Renters As Well As Home Owners

## MILLER FURNITURE CO.

1513 Cabrillo Avenue Torrance Phone 545

Read Our Want Ads!