

**"Thank You! Thank You!"
Again and Again!**

"I cannot begin to express my hearty appreciation for the wonderful reception you gave me upon the opening of my new store last week. I am particularly grateful to the many friends who called at the store to extend their best wishes and hopes for success. It was mighty fine of all of you, and my earnest hope and aim will be to merit your confidence and friendship."
Harry M. Abramson."

In Response to Popular Demand
We Will Continue to Give
FREE . . . A Case of 30 Pkgs.



**WHITE KING
WASHING POWDER**
With Each Washer Purchase

A Super Washer Value



This Genuine "American Beauty" with large, full size tub (same as higher priced washers), and two coats vitreous enamel inside and out. Also swinging wringer with large heavy duty balloon rollers; and inclosed gear case. ONLY

\$49.95

American Beauty
NOTHING DOWN
3 Years to Pay
Under NHA Plan
Other Models On Display
to \$99.95

Gaffers & Sattler Heaters



We have a complete line of these very efficient and safe heaters, that are so economical on gas.

All the newest designs and finishes to harmonize with any home decorations.

Both Radiant and Circulating Heaters
All Sold on
EASY TERMS

Prices Start At
\$3.25

**NATIONAL HOME
APPLIANCE CO.**

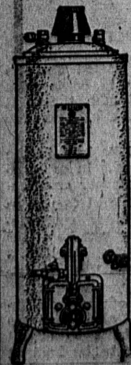
"Friendly Credit"

1318 Sartori Avenue Torrance

RUUD

Automatic Hot Water

Let Ruud Hot Water play a matchless accompaniment to the tune of cleaner dishes, quickly and easily washed. Wash dishes when you are ready, not when the hot water is ready. Demand Ruud Hot Water—flowing at the turn of a faucet from Ruud the lifetime heater. Don't take chances on your hot water service. The health and comfort of your family is too precious to risk an inferior heater. Save Money with a tank of Non-Rust EVERDUR. For the best and most economical service, we recommend heaters with storage tanks of welded Everdur Metal. It is a copper-silicon alloy; it cannot rust, and it has the strength of steel.



**No Down Payment
TERMS**

As Low as \$2.29 per mo.

Ask us for details of this easy payment plan. You can enjoy your Ruud Hot Water NOW while you are paying for it

**NATIONAL HOME
APPLIANCE CO.**

1318 Sartori Ave. Torrance
Opposite Woolworth's

Landing Gear Fails; He Balls Out



Lieut. William A. Hatcher, 44-year-old Army reserve pilot, is the newest member of the select Caterpillar Club. Lieut. Hatcher, inset, took his plane up at Los Angeles. The landing gear collapsed. He was informed of the accident by radio from an accompanying plane. His gear was dangling about three and a half feet. After circling around, Lieut. Hatcher abandoned the plane via parachute. The ship crashed and burned.

Northland Hero Returns to Mainland



Sergeant Stanley Morgan, who flashed to the world the news of the death of Will Rogers and Wiley Post, returns to the mainland for an indefinite vacation as a reward for his heroic work. Here he is with his wife and son, Barrow, as they arrived in Seattle.

Heads Guard



Brig. Gen. Thomas E. Riley, of Salem, Ore., who is in line to become president of the National Guard Association of the United States. He is now vice-president. Riley is the commander of the 62nd brigade of the 41st division—which includes National Guard troops in Oregon, Washington, Idaho and Montana.

**Long Air Dash
Will Finish At
Long Beach Port**

Women's Championship
Races and Air Pageant
Held In November

LONG BEACH.—Official announcement has just been made of the Women's Championship Air Races and Pacific Air Pageant to be held here November 10 and 11, under the official sanction of the National Aeronautic Association of Washington, D. C.

Sponsored by the Junior Chamber of Commerce of Long Beach in collaboration with the Los Angeles Junior Chamber organization, this contest is to determine the champion woman aviator of the United States. There are to be four main contests, one transcontinental speed dash and three women's closed course races.

The transcontinental dash will start from Floyd Bennett Field, New York, and end in front of the grandstand at the Long Beach airport. There will be the stop at Amarillo, Texas, because of the shorter days and weather hazards.

This is to be a race for the faster flying time between the Atlantic and Pacific points. It is a free-for-all competition for all types of airplanes and there will be no handicaps. Qualifying speed is to be 180 miles an hour.

A carefully worked out system of merits to be divided between the four race events will be used to determine the champion woman flier. The chief event, however, is the transcontinental dash.

Gladys O'Donnell, one of America's greatest women aviators, was recently toasted at a banquet here as the initiator of the idea. She will not compete, but many other women stars of the flying game will enter.

STORY 1

Continued from Page 1

pamphlet containing the dates of the concerts, names of sponsors and other supporting friends, and informative material about Torrance, which will be mailed to music lovers in Hollywood, Long Beach, Los Angeles, and other communities with the object of arousing the interest of people residing outside of Torrance in the coming series. The six concerts will be in addition to the free concerts contracted by the city in return for an appropriation of \$400 set up in the budget, and to these six concerts admission will be charged. The first will be held at an early date.

The council authorized the appropriation of an additional \$500 for the purchase of a lot adjoining the city hall site, which will be used as a garage and parking site for the police department and city hall attaches. The owner of the lot set his price at \$3,000 for one lot or \$5,000 for two. The city had authorized the appropriation of \$2,500 for this purpose, but the sum was not enough to obtain the one lot needed. The purchase is necessary because the site now owned at the corner of El Prado and Cravens is not large enough to accommodate both the proposed city hall and jail and the garages.

A letter from the Torrance Electric Shop, quoting prices for the repair of neon signs directing traffic to Torrance, at Carson and Vermont, Carson and

Alameda, Hawthorne and Torrance boulevards, and at the entrance to the city on El Prado, was referred to the Chamber of Commerce for action.

The city is proceeding with

the condemnation suit against the Home Owners Loan Corporation and Mr. DeMuth, to secure right of way along Hawthorne boulevard for the widening of that street. A settlement with Mr. DeMuth, negotiated several weeks ago, failed.

Texas Chili and Hot Tamales - Take some home in our containers
ALLEN'S Chili Parlor
Torrance Blvd. at Cravens

**"I Know Why More People
Buy A & P Coffee**

For Flavor---
For Freshness---
...knowing that no finer coffees are obtainable at any price"

"RICH AND FULL BODIED"
RED CIRCLE lb. 18c
"THE COFFEE SUPREME"
B O K A R lb. 22c



Fresh Produce Specials

CELERY SAN JOSE EXTRA FANCY 2 Large Stalks 15c

BARTLETT PEARS LAKE COUNTY 4 lbs. 19c

PIPPIN APPLES RIPE 7 lbs. 19c

PERSIMMONS RIPE 3 lbs. 10c

CAULIFLOWER FIRM WHITE head 9c

CHICKEN-OF-THE-SEA FANCY TUNA 7-oz. can 12 1/2c	DEL MONTE-SOLID PACK TOMATOES No. 2 1/2 can 13c
ACE HI FLOUR 10-lb. sack 39c 2 1/2-lb. sack 89c	DEL MONTE PLUMS DELUXE No. 2 1/2 can 11 1/2c
CLOVERBLOOM FULL CREAM BUTTER CHALLENGE lb. 36 1/2c	DEL MONTE PEAS EARLY GARDEN No. 2 can 13 1/2c
FINE GRANULATED SUGAR PURE CANE 10-lb. cloth bag 51c	DEL MONTE CORN VACUUM PACKED 12-oz. 12 1/2c
MONOGRAM LARGE EGGS U. S. EXTRAS Every Egg Guaranteed, doz. 37c	HEINZ VEGETARIAN OR TOMATO SAUCE BEANS BAKED 3 12-oz. cans 25c
ALBERT'S FLAPJACK FLOUR large pkg. 17c	DEL MONTE APRICOTS No. 2 1/2 can 17 1/2c
GERBER'S BABY FOODS 3 cans 25c	DEL MONTE PEACHES Halves or Sliced No. 2 1/2 can 15c
CARNATION QUICK OATS large pkg. 17c	DEL MONTE PEARS BARTLETT No. 2 can 14c
HEINZ TOMATO KETCHUP 14-oz. bottle 18c	DEL MONTE PUMPKIN No. 2 1/2 can 10c
CALIFORNIA HOME TOMATO JUICE 3 No. 1 cans 17c	NUTT BROS. "BIG BUY" COOKIES 5 dozen assorted pkg. 10c
BAKING POWDER RUMFORD 12-oz. can 18c	N. E. C.'s RITZ 1-lb. pkg. 21c
CONDENSED MILK EAGLE BRAND can 18c	BLUE MOON CHEESE American Finest Limburger Gamebrle 4-oz. cup 17c
KNOX SPARKLING GELATINE pkg. 17c	WELCH'S GRAPE JUICE pint bottle 17c
FOOD BEVERAGE COCOMALT 1-lb. can 35c	SULTANA P-NUT BUTTER 2-lb. jar 35c
GERHARDT'S EAGLE CHILICON CARNE can 13c	SULTANA-BROKEN SLICES PINEAPPLE No. 2 1/2 can 15c
GAMBELL'S ASSORTED SOUPS CHICKEN 3 cans 25c	MEADOW GROVE CHEESE FULL CREAM lb. 18c
FANCY NEW YORK STATE APPLE SAUCE No. 2 can 10c	SHORTENING CRISCO 1-lb. can 21c 3-lb. 58c
GRANULATED RINSO SOAP large pkg. 19c	EVER-READY FRUIT COCKTAIL No. 1 can 13c

Highest Quality Meats

CUDAHY'S PURITAN FANCY EASTERN HAMS SKINNED SHANK END lb. 19c
BUTT END lb. 25c WHOLE OR HALF lb. 28 1/2c

FANCY EASTERN GRAIN-FED "BRANDED" BEEF STEAKS Round, Swiss Sirloin or Ground Round lb. 25c

CUDAHY'S EASTERN SUGAR-CURED BACON BY THE PICE lb. 35c
FRESH LEAN GROUND BEEF lb. 15c
EASTERN GRAIN-FED **PORK LOIN ROAST lb. 27c**

ARMOUR'S SHORTENING 1-lb. carton 12c
FRESH LARGE EASTERN OYSTERS 25c
EASTERN GRAIN-FED BEEF **RUMP ROAST lb. 22c**

CUDAHY'S PURITAN or Sunnyfield 1/2-lb. pkg. 19 1/2c
FANCY EASTERN GRAIN-FED "BRANDED" BEEF ROASTS CHUCK POT ROAST lb. 15c
RIB ROAST lb. 22c

GENUINE 1935 SPRING BABY MILK LAMB SHOULDER ROAST lb. 17c
FINEST QUALITY

PRICES EFFECTIVE THURS., FRI., SAT., OCT. 24, 25 & 26, 1935

A & P FOOD STORES

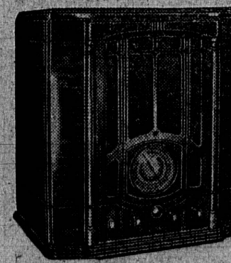
1319 SARTORI AVENUE, TORRANCE

**YOU'LL SEE AN EYEFUL
AND HEAR AN EARFUL
HERE... in**



**The New RCA
VICTOR
1936
MAGIC
BRAIN
RADIO**

Take a Year to Pay with Small Payment Down



10-TUBE MODEL T10-1 540,000 kc.—U. S. & Foreign programs, Police, Aircraft and Amateur calls. Automatic Volume Control and Tone Compensation, 1 1/2 watts output. Exquisite cabinet of selected mahogany and sapphire veneers. \$99.50
There's a lot to see here—fascinating dials, chasses, the New Magic Brain! But there's even more to hear! And that's Magic Brain Radio performance—1936 style... See these 1936 RCA Victor instruments!

With RCA World-Wide Antenna System, only \$104.50

Also On Display . . .

The Sensational

RCA Victor Magic Brain-Magic Eye Metal Tube Radios

Don't Fail to See and Hear Them

Prices Begin at \$119.50

Other RCA-Victor Radios, \$20.50 to \$695.00
ALL SOLD ON EASY TERMS

**NATIONAL HOME
APPLIANCE CO.**

1318 Sartori Avenue, Torrance, Phone 78

NEW LIFE FOR ANY RADIO IN RCA TUBES