

Ask Permission To Exceed Limit

Because the six-cent levy set up in the tax budget this year for library purposes will increase the expenditures of the city of Torrance more than five per cent over last year, the council on Tuesday adopted a resolution asking permission from the board of equalization to exceed this limit. Under the law, a municipality may not increase its expenditures in any fiscal year by more than five percent over those of the preceding year.

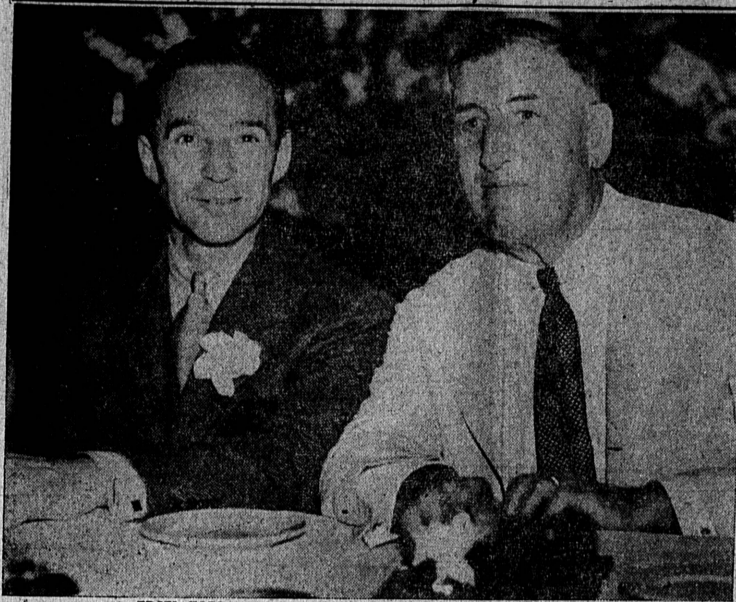
The transfer of the library tax from county to city rolls brings about that condition, although it makes no financial difference in the tax bill of the individual.

J. R. Edwards Is Called By Death

J. R. Edwards, age 58, who resided with his mother Mrs. E. L. Edwards at 18333 South Western avenue, Torrance, passed away at his home on Tuesday. Funeral services were conducted at Stone & Myers chapel today, with Rev. E. Murray Clayton of St. Andrews Episcopal church in charge. Interment was made at Evergreen cemetery, Los Angeles. Mr. Edwards was the son of the late Dr. George R. Edwards.

COLUMBIA, Mo. (U.P.)—An innovation in the making of grades makes its appearance at the University of Missouri this fall. The records will be photographed and the prints forwarded to students.

Smile as Production Nears Million Mark



EDSEL FORD

W. C. COWLING

Mr. Ford, left, president of the Ford Motor Company, and W. C. Cowling, general sales manager, at the luncheon meeting in the Cafe of the World, America's Exposition, Balboa Park, San Diego. One thousand Ford and Lincoln dealers and salesmen and Service Merch Club members gathered in San Diego for a program that included a tour through the Exposition grounds, deep-sea fishing, etc. Saturday, as guests of the company, the members of the Ford organization toured the studios of Hollywood. Ford V-8 production for this year is nearing the million mark forecast as the goal for the year.

School Board Sets Date of Bond Election

Voters Asked to Authorize Issuance of \$12,000,000 For Reconstruction

November 19 is the date fixed by the Los Angeles board of education for a special election at which voters will be asked to approve a \$12,000,000 bond issue in order that the district may obtain a cash federal grant of \$10,139,729 from the PWA.

The date was fixed at the meeting of the board of education Thursday afternoon in Los Angeles.

Plans are being made today for the campaign to obtain the public support for the bonds. Without approval of the proposed bond issue, the PWA will withdraw its \$10,000,000 grant, according to board officials. Originally it was proposed to obtain the entire amount from the PWA, the \$10,000,000 in the form of a grant, and the balance in the form of a loan to be retired by bonds.

Should the bonds be given the necessary majority, it is believed the federal government will buy the bonds in the event they would find no market locally.

More than half of the federal grant will be used to reconstruct and to rehabilitate elementary school buildings throughout the district, the figure being given as \$5,137,363. For high school building reconstruction, \$4,711,935 is to be expended, while it is proposed to expend \$2,150,702 on buildings at the Los Angeles Junior College.

Should the bond issue carry the City of Torrance will probably attempt to have included in the rehabilitation program the high school auditorium and the elementary school at Waverly. The auditorium is greatly needed for various high school activities and is also used many times for the presentation of community projects because of its ample seating capacity. The elementary school building at Waverly, which was seriously damaged in two earthquakes, the last one on March 10, 1933, completing the work of rendering the structure unsafe for use, should be torn down and entirely rebuilt. The pupils at Waverly are now housed in bungalows.

Canoe Tricks Sailors
SEATTLE, U.P.—Much chagrined were three sailors of the U. S. navy destroyer Waters. While on leave they went canoeing on the fresh waters of Lake Washington. Their canoe capsized and before they had chance to it for an hour, they were picked up by a passing sailboat.

WE HAVE THEM NOW

HEAR THE NEW

ZENITH

THE ALL-FEATURE Radio of 1936

• The new 1936 Zeniths are here! Every worth-while feature. Zenith's new Black Magnavision Dial—Over-tone Amplifier—and many other features that give the new Zeniths excellent tone quality—better all 'round performance. Ask for the radio with the black dial.

Zenith No. 6-S-27 . . . 6 tubes. Times American and Foreign Stations; police, amateur, aviation at sea, Black Magnavision Dial, Split-Second Tuning.

\$62.95 Your Old Radio Taken As Down Payment Easy Terms On Balance

ELECTRIC WASHERS

May Now Be Purchased on F. H. A. Terms—

No Down Payment Pay \$3 a Month

Renters as well as home owners may take advantage of Federal Housing Act terms for purchasing any of the following well known makes of Washers sold by the Star Furniture:

- * Easy
- * A. B. C.
- * Apex
- * Thor
- * American Beauty
- * Gain-A-Day
- * National Watermatic

NO RED TAPE! NO DELAY!
We Arrange All Details

New Washer Prices Start at **\$39.50**

Star Furniture Co.
1273 Sartori Torrance
"WE CHALLENGE CITY PRICES" PHONE 620

School Clothes For Boys and Girls

No matter what their age, their tastes, or the size of their parents' income, you'll find at Levy's a most satisfying array of dependable School Clothes,—qualities and prices that mean REAL Service and REAL Savings.



- FOR GIRLS**
- ◆ Dresses
 - ◆ Skirts
 - ◆ Middies and Ties
 - ◆ Coats
 - ◆ Sweaters
 - ◆ Shoes and Hose
 - ◆ Gym Clothes
- FOR BOYS**
- ◆ Dress Pants
 - ◆ Cord Slacks
 - ◆ Sweaters
 - ◆ Gym Clothes
 - ◆ School Shirts
 - ◆ Shoes and Socks
- In fact, EVERYTHING that Boys and Girls of All Ages need. Never have we had such a fine assortment of school togs.

Just Arrived!—New Fall Colors In

Doubly Certified

HOLEPROOF HOSIERY

* Tested and Approved by the Better Fabrics Testing Bureau.
* Quality Checked and Guaranteed by Good Housekeeping.

Only Holeproof Hosiery gives you this double assurance of quality. Now both sheerer and stronger... and even more attractive in value! Shadowless chiffon or light service

79c and \$1.00

10 GREAT FEATURES

1. Wider easy-stretch tops—extra heavy—deeper to provide more gathering area.
2. Shadow after-well and lock stitch run-up in all styles prevents garter turn. Jockey face design in chiffon at \$1.00 and up.
3. New sewing ends puckering. Leg seams finer, straighter.
4. Special high-twist super quality silk—dull finish—SHADOWLESS 3-carrier construction.
5. Stronger heel reinforcements. Steel height projection against rubbing from shoes.
6. Extra strong reinforcements at heel corner.
7. Finer type seam in sole—extra flat for foot comfort.
8. Special cradle sole—styled for greater beauty—constructed for longer wear.
9. Added reinforcements in children styles at both sides where feet catch makes extra wear. PROTECTS BLUNTON AREA.
10. Famous exclusive Ex-Toe reinforcement.

HOW IT COSTS YOU VERY LITTLE TO GET RID OF YOUR FOOT TROUBLES

Never before has it been so easy to obtain relief from foot troubles. The proper Dr. Scholl's Appliance or Remedy will be gladly demonstrated without cost or obligation. These remedies cost 15c—25c—35c and 50c. Dr. Scholl's Balanced Posture Arch-Supports, including complete servicing and individual fitting—at the following prices per pair.

\$1.00 \$1.50 \$2.50 \$3.50 \$5.00

SEE OUR NEW LINE OF Red Goose Shoes For Infants, Boys and Girls

Favorites With Folks Who Know Quality

SAM LEVY
1311-1313 Sartori Ave., Torrance

SOUP SOCIETY Soup Introduces the Meal

Or Serves As Its Most Important Dish

A clear soup, or one that is light and savory is an ideal prelude to a substantial meal. Other soups, rich in meat and vegetables can serve adequately as the main dish when supplemented by a salad, or a substantial dessert. Here are satisfactory examples of each type.

Louisiana Soup
Soak one pound of dried lima beans one hour or more. Put part of a ham bone, the beans, three onions, twelve peppercorns, and one half a bay leaf with six to eight cups of water in a soup kettle and cook slowly until the beans are tender—two or more hours. Reserve one and one half cups of whole beans. Force the remaining beans and stock through a puree sieve. Return the whole beans to the stock, add one cup minced carrot, one-half cup minced green pepper and one small can tomatoes. Cook until tender. If there are bits of ham adhering to the bone, mince them and add to the soup. This soup with toasted bread is sufficient for dinner with a salad and dessert.

Torrance Notes

WIENER BAKE MEET AT PARK TONIGHT
The public is invited to attend a wiener bake and meeting of the Townsend club in the city park this evening at 6:30 p. m. A good speaker will be included in the program.

SUNDAY VISITORS AT SHREEVE HOME
Mr. and Mrs. Clyde Davison of San Diego, with their son, Sandy Davison of Iowa, visited Sunday with Mr. and Mrs. E. H. Shreeve of Crayons avenue.

W. B. A. MEETING AT TOMKINS HOME
Woman's Benefit Association will hold their regular meeting Tuesday evening, September 17 at the home of Mrs. E. N. Tomkins, 1811 Gramercy avenue.

McMILLANS ANNOUNCE ARRIVAL OF SON
Mr. and Mrs. Warren McMillan, Los Angeles, announce the birth of a son in Long Beach, Wednesday, September 4. Mother and son are doing nicely.

BAKERSFIELD FOLKS VISIT HERE
Mr. and Mrs. Neil Webb, 1420 Marcolina Avenue, had as their house guests for the week-end, Mr. and Mrs. Neil Orsman of Bakersfield.

HOME FROM TRIP TO YOSEMITE
Mrs. Reba Ray and daughter Pauline, 2268 Torrance boulevard, have returned from a week's vacation spent at Yosemite, and in visiting other points in the northern part of the state.

VISITORS FROM CANADA HERE
Mrs. Arthur Van Sickle of British Columbia with children Wilma and Robert arrived in Torrance Thursday to visit for a month with her mother, Mrs. Frederick Smith, 930 Arlington avenue.

KNIGHTS OF PYTHIAS CARD PARTY
The Knights of Pythias and their friends will attend a card party, Saturday evening, September 14, at 114 No. Catalina avenue, Redondo Beach. All visiting Knights and their friends are invited.

JOB'S DAUGHTERS POTLUCK TUESDAY
Job's Daughters will hold a potluck dinner in the Masonic temple, Tuesday evening prior to their regular meeting.

CLIMB TO TOP OF WHITNEY
John Young, Jr., with Walter Claus and Stewart Dufour of San

DINNER GUESTS WEDNESDAY
Mr. and Mrs. L. C. Dean, 2203 Torrance boulevard, entertained with a dinner party at their home Wednesday evening. Their guests included Mr. and Mrs. L. G. Bartlett and Mr. and Mrs. C. M. Howard of Glendale.

DRIVING TO STANFORD
Mr. and Mrs. Willis M. Brooks will leave Saturday to drive to Palo Alto, accompanying their son Philip Brooks, who will be on the teaching staff at Stanford university this year.

EAST SIDE MISSION NEWS
Ladies of the East Side Mission entertained with a stork shower for Mrs. Bobbie Turner, daughter of Mrs. T. Tucker, recently. East Side Mission meets each Tuesday, 1351 21st street.

MRS. STEPHENSON LUNCHEON HOSTESS
Mrs. L. E. Stephenson, 1424 Beech avenue, entertained with a luncheon at her home Wednesday. Covers were placed for Mrs. Florence Steiner of Alhambra, Mrs. George Swanson and Mrs. Robert Wolstenorff of El Monte, Mrs. Edgar Stephenson of Gardena, Mrs. Laura Buchman and the

CONSOUME
2 1/2 pounds shin of beef
1 fowl
3 large carrots
2 white onions
2 leeks
parsley
thyme
1 clove garlic
1 laurel leaf
2 cloves
salt and pepper
6 quarts cold water
Wash the chicken carefully, put it in a large soup pot, add the water. Let stand for an hour, then put on the fire and bring slowly to a boil. Remove the scum, add half a glass of cold water and bring to a boil again. Repeat this process twice. Simmer very slowly for an hour then add the rest of the ingredients and simmer for 7 hours. Strain through a fine sieve and through wet cheesecloth. When cold carefully remove grease. Reheat before serving.

DEBRA RADIO moves to new QUARTERS
DeBra Radio Company this week removed its place of business from 1324 17th Prado to 1321 Cabrillo avenue, where an exclusive radio repair and service station has been installed. Gene DeBra, proprietor of the company has been identified with radio in Torrance since 1923, and extends an invitation to old and new patrons to visit at his new quarters.

Old Autos Sold to Museum
DULUTH, Minn. (U.P.)—George A. Sloan, of Duluth, has sold two antique automobiles to a Los Angeles museum, being developed by a California lumberman. One car was a five-passenger International; the other, a sporty one-seater made by an Ohio firm. They had been in storage for 15 or 20 years, Sloan said.

BEACON DRUG CO.
The Rexall Store
Leslie L. Prince

Our Druggist Says . . .

"A prescription filled at the Beacon always lives up to expectations—always accomplishes the exact results that your doctor intended it to. That's because our registered prescriptionists know the meaning of ACCURACY . . . and they practice it faithfully in all the work they do for you."

Specity PRESCRIPTIONS and be SURE

1519 Cabrillo Ave., Telephone 180. Torrance, Calif.

Authorized Ticket Agency for the Greyhound and Union Pacific Bus Lines

ONE 5c SPOOL OF THREAD . . . COSTS MORE THAN HOT WATER 24 HOURS A DAY!

It costs less than a nickel a day (and all night included) to have a never-failing supply of hot water ready to spout from every faucet in the average Southern California home—that is, if you use an automatic gas water heater.

Heating water automatically with Natural Gas saves two dollars out of three every month, compared with the cost of any other modern method.

And the reason is that Southern California Natural Gas is efficient as well as inexpensive—it goes to work instantly! It delivers more heat units per minute, with no time and money wasted in "warming up." You'll appreciate this quick heating when two or three people in the family have used hot water for long shower baths—and you're next.

Any dealer, or the Gas Company, will gladly tell you all about the new low terms on gas appliances.

Natural Gas
—lowest in cost of all practical fuels

SOUTHERN CALIFORNIA GAS COMPANY

VISIT the PALMER STEEL HOUSE, Wilshire & Windsor Blvd., L. A. — the latest in construction and furnishings.