

Sinus Trouble

head colds, hay fever, asthma and catarrh. Don't endure this torture another day. Ask for a FREE TREATMENT now, TODAY. Discover how thousands have found relief quickly with

Syn-O-Spray

Your free treatment now available at:

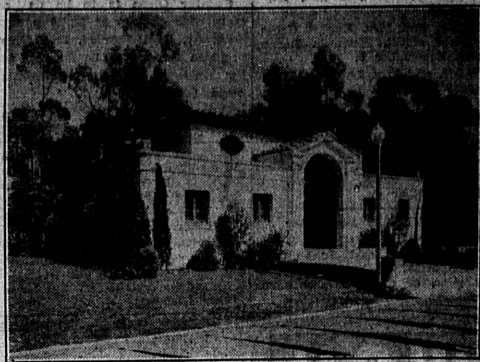
DOLLEY DRUG CO.
Sartori and El Prado Torrance

New Trial In Slander Suit

Motion for a new trial of the \$7000 slander suit brought by William B. Comozzi of Lomita against Mrs. Sydney Sheldon has been granted by Los Angeles county superior court.

Comozzi recently was awarded judgments totaling \$750 against Mrs. Sheldon, according to court records, but her attorneys moved for a new trial, which has been granted.

Newspaper Publishing Exhibited



The Christian Science Monitor Building at the San Diego Exposition.

SAN DIEGO, Sept. 12.—Modern newspaper publishing is portrayed graphically to visitors at the California-Pacific International Exposition here by exhibits of The Christian Science Monitor, an international daily newspaper. The exhibits are housed in an attractive building of Mediterranean design located next to the Press Building and across from the office of Pacific Relations.

The roar of gigantic presses is lacking, but the story of news as it moves from reporter to reader is told realistically by a lighted model of the Monitor's new \$4,000,000 home in Boston. In the foreground is spread a depiction of the earth's surface. Towers on various continents and islands indicate with flashing lights the world-wide gathering of news. Illuminated portions of the Publishing House then point successively to the progress of the news through editorial, typographic, press and shipping departments. From the latter, miniature trucks take papers to trains and shipping lines, which then play their part in disseminating throughout the world the news which has been gathered and interpreted internationally.

In the reception room of the Monitor building are mechanically operated exhibits that relate to newspaper advertising and circulation. In another room a mechanical exhibit features items of interest to children by portraying Tubby and Buddy, Snubs Our Dog, Waddles the duck, and other subjects taken largely from pictorial strips and from stories that have appeared on the Children's Page of The Christian Science Monitor. Elsewhere in the building are displayed copies of various editions and translations of the writings of Mary Baker Eddy, the Discoverer

and Founder of Christian Science. The upper story of the structure is tastefully furnished and equipped as a Christian Science reading room.

An average of over 700 people daily from all parts of the country have been visiting the building. Varied as the interests of these visitors may be—economies, politics, advertising, the home, arts, sciences, education, etc.—there is something there for all of them. The cultural, educative, and up-building features of the exhibits exemplify to a degree the ideal set by Mrs. Eddy when she said that the object of the Monitor is "to injure no man, but to bless all mankind." (Miscellany, p. 353.)

CHRISTIAN SCIENCE CHURCHES

"Substance" is the subject of the Lesson-Sermon on Sunday in all branches of The Mother Church, The First Church of Christ, Scientists, in Boston, Mass.

Among the Bible selections in the Lesson-Sermon are these passages from Matthew: "And I brought him to thy disciples, and they could not cure him. Then Jesus answered and said, 'Bring him hither to me. And Jesus rebuked the devil, and he departed out of him; and the child was cured from that very hour.'"

Musical Program By Local Artists

"Fifty strong" is the new slogan of Torrance Men's Bible Class. The few additional members necessary to reach this goal are to be recruited by Thanksgiving. Committee work toward the completion of the Bible Class Building is going forward. The "Fireplace Committee" is at the point of making final decisions—the "House Lighting" boys are already in the swing of their work and the "Plaster Fellows" are impatient because they cannot start to do anything before the electric conduit is laid and completed.

Dewey Phipps, who is in charge of the musical program for Sunday morning, September 15, has invited Mrs. Elsie Smith of 719 Cota avenue and Mrs. H. Swanson of Maricopa street to sing a group of duets.

Harold Massey, 2215 Gramercy avenue and Mr. Kenneth Parkins, 2208 Gramercy avenue will play Hill Billy numbers on the banjo and guitar.

Bible Pictures And Lecture

Mrs. E. A. Baker of the Los Angeles Eyegraphic Institute, will present one of her Bible picture-lectures at the First Christian church, Torrance, next Sunday evening, September 15. The picture-lecture will be especially interesting to young people of grammar and high school age. Mrs. Baker is well known to the members and friends of the Christian church as she gave a series of these lectures at the church last fall. All are invited to attend. A silver offering will be taken.

CHURCH NOTES

Church notices to be secured of publication, should be in the Herald-News office before 10 a. m. Tuesday. Every effort is made to publish them all, but occasionally when they are late they must be omitted.

CENTRAL EVANGELICAL CHURCH

Marcellina and Arlington avenues. O. D. Wonder, minister. Sunday school at 9:45 a. m. W. E. Bowen, superintendent. Divine worship at 11 a. m. Sermon by the pastor. Christian Endeavor meets at 6:30 p. m. Evening worship at 7:30 p. m. Brief message by the pastor. Midweek meeting Wednesday evening at 7:30 p. m.

METHODIST EPISCOPAL CHURCH

El Prado and Manuel. Kemp J. Winkler, pastor. 9:30 a. m., Church School Hour. Harry Sweet, superintendent. Classes for all ages. Men's Bible class. 10:50 a. m., morning worship service. Sermon by the pastor. 6:30 p. m., Epworth League Hour for Young People. 7:30 p. m., Evening Church Service. The pastor will preach the first of a series of "Sermons from the Highway." A special feature of interest each Sunday night. Tuesday, 6:30, first quarterly conference. Meeting for all members and friends of the church. A planned pot luck supper.

FIRST CHRISTIAN CHURCH

Engracia at Arlinton avenues. Pastor, T. M. George Elder, pastor. 9:30 a. m., 125 Church School meeting in several assemblies with classes for every age. Scott R. Ludlow, superintendent. Morning service, 10:50 o'clock. Sermon subject: "Why must Christians suffer trial?" Special anthem by the choir. Evening service, 7:30 o'clock. Eyegraphic picture-lecture by Mrs. E. A. Baker of Los Angeles. Other Sunday service: 6:30, Sunday evening, young people's Christian Endeavor hour. During the week: 7:15, Wednesday evening, church night discussion led by the pastor. Choir rehearsal Wednesday night at 8:15. Alice Hazel, director. Thursday evening, this week, Church School Council meeting at the superintendent's home. Friday evening, 8 o'clock, old-fashioned box supper will be held at the social hall.

FIRST BAPTIST CHURCH

Martina and Carson street. C. M. Northrup, pastor. Sunday school, 9:45 a. m. Dr. H. C. Ritter, superintendent. Classes for all ages. Morning service, 10:50 o'clock. "What Baptists Believe and Why." Evening service, 7:30 o'clock. Rev. Luther Arthur, pastor of the Huntington Beach Baptist church, will preach. He will bring a large chorus choir from his church who will give a 30-minute program of special music before the sermon. The regular B. Y. P. U. for children and young people will meet Sunday evening at 6:30 o'clock. Prayer meeting, Wednesday evening at 7:30 o'clock.

FIRST LUTHERAN CHURCH

Acacia avenue and Sonoma street. Frank D. McCalling, pastor. Sunday school, 9:30 a. m. Miss Irma Tauber, Missionary to New Guinea will speak to the Sunday school. Morning service, 10:45 o'clock. Topic, "Chosen of God." Miss Tauber will also speak to the congregation during the morning service.

Farwell service for a group of five missionaries to New Guinea in the First Lutheran Church, Ingewood at 3 p. m. Junior Bible Hour on Saturday at 9 a. m. All our boys and girls of 12 years or near that are urged to be present. Rev. C. Sibberson, Topeka, Kansas, traveling missionary to the deaf-mutes will tell us about his work on Sunday, September 22. He is nationally known for his work with the deaf-mute-blind. Any deaf or deaf-mute is heartily invited to the service at 10:45 on the above mentioned date.

CHURCH OF THE NATIVITY CATHOLIC

Cota and Manuel avenues. Rev. Thomas Kennedy, pastor. Phone 382. Mass celebrated Sundays at 7:30 and 9:30 a. m. Sunday school, 10:30 a. m. Benediction, 7:30, Sunday evenings.

SOUTH LOMITA CHURCH

The friendly church, Fundamental, evangelistic, 2341 35th street, Lomita. T. C. Colwell, acting pastor. Sunday school, 9:30 a. m. Young people's meeting. Morning service, 11:00 o'clock.

MISSIONARIES sail on Wednesday FOR NEW GUINEA

When the Mariposa of the Matson Lines sails from Los Angeles Harbor on September 15, five missionaries from the American Lutheran Church will be on board bound for the islands of New Guinea.

Miss Irma Tauber, St. Paul, Minnesota, who speaks in the Lutheran Church in Torrance on Sunday morning is a daughter of Rev. B. Tauber, executive secretary of the New Guinea section of the foreign mission work of the American Lutheran Church. Miss Tauber goes out as a teacher to the children of the white missionaries now on the field.

The workers sailing with her are Miss Emma Blum, registered nurse, Miss Agnes Hoeger, M. D., Mr. Thorgerson, a lay missionary and Rev. Felix Doering, a recent graduate of the Warburg Seminary at Dubuque, Iowa. A farewell service will be held in the First Lutheran Church, Ingewood, on Sunday afternoon at 3 o'clock. Members and friends of the missionaries will gather for this service from Los Angeles, Pasadena, Pomona, Ontario, Anaheim, Santa Ana, Long Beach, Compton and Torrance.

A number from the local congregation will be at the pier for the sailing of the Mariposa.

Merchant Marine Offers Opening To Young Men

Entrance Examinations For Training Held In Los Angeles Tomorrow

Ambitious young men interested in following the call of the sea may take entrance examinations for the California Nautical School from 9 a. m. to 4 p. m. Friday, September 13, at Metropolitan high school, 234 Venice boulevard, Los Angeles. This information, together with requirements for matriculation, was received yesterday by Captain Paul Chandler, manager of the Marine Exchange department of the Los Angeles county Chamber of Commerce, from Captain R. C. Dwyer, commander of the training ship, U. S. S. California, based at Tiburon, Marin county.

Under new laws and attendant appropriations passed at the last session of the legislature, one hundred cadets will be accepted for training this fall for a three-year term of technical and practical instruction after which they will be eligible to secure federal commissions and become officers in the American Merchant Marine. One half of the time will be spent at the Tiburon base and the remainder in cruising to foreign countries aboard the training ship.

Applicants must be between the ages of 17 and 21 years, and have had the equivalent of a high school education. A limited supply of descriptive pamphlets and application blanks has been received by Captain Chandler at the Los Angeles county Chamber of Commerce. He will be glad to give information concerning requirements for matriculation to interested persons.

INTERESTING subjects offered AT NIGHT SCHOOL

Many interesting subjects will be offered at the evening high school which began its sessions for the fall semester at the Torrance high school last Wednesday evening. The program includes Arts and Crafts; clay modeling, weaving, art needlework, drawing and design, flower making; on Monday and Thursday; beauty culture; Monday and Wednesday; clothing; Monday and Thursday; commercial typewriting for beginners and advanced, shorthand for beginners and advanced, book-keeping, comptometer and Monroe, on Monday, Wednesday and Thursday; orthography, Wednesday; physical training for men, Monday and Wednesday; physical training for women Thursday; woodshop, machine shop, mechanical drawing, Monday, Wednesday and Thursday. Short unit courses will be organized as there is a demand for them. An enrollment fee of five cents will be charged.

AMMUNITION to be stored on ISLAND

Proposal of Supervisor John Anson Ford that the county establish a county prison farm on San Clemente Island, 49 miles south of Los Angeles harbor, could not be worked out because the navy department plans to use it for storage of ammunition, Ford was informed this week.

"Plans have been made to develop the island for naval use and it is expected work will start within a month," Rear Admiral W. T. Tarrant stated. "As soon as it has been made habitable it will be used by the fleet for miscellaneous training purposes involving live ammunition and explosives.

"These activities are so widespread and so dangerous to persons ashore as to preclude the possibility of setting aside a small portion of the island for other purposes."

MONARCH FOODS now featured by OETKEN GROCERY

A complete line of Monarch brand foods are now being featured by Oetken's Grocery, 1001 Sartori avenue. Patrons desiring something exceptionally nice and yet within a reasonable price are invited by Miss Oetken to try Monarch coffee, canned fruits and vegetables, cake flour and a new cereal recently put on the market known as Monarch food of wheat. Home baked hams and other delicatessens are also featured by Oetken's Grocery.

Diver Entombs Catfish

VANCOUVER, B. C. (U.P.)—A thrilling fight with a giant catfish was described by Steve Addison, veteran diver. Using a crowbar as a weapon, he fought it off and forced it backward inside a hole in the pier which he was repairing, and sealed the hole with cement.

Real Texas Hot Tamales You'll Like 'em at ALLEN'S Chili Parlor Torrance Blvd. at Cravens

Watch The Bird Fly Into The Birdhouse!



Hold the paper at arm's length. Fix your eyes on the bird, and move the paper slowly toward you. The bird will then move into the house.

It's A Trick Your Eyes Play!

But not all of the tricks your eyes can play are as amusing as this one. Blurred vision, tired eyes, headaches... they are dangerous warnings that more serious troubles may follow. It's best to be safe! Have a qualified specialist examine your eyes! Just telephone Torrance 411 for an appointment.

Optical Service Available On Convenient Terms

Dr. Alden W. Smith
Optometrist at

Howard's Jewelers
1503 Cabrillo Ave., Torrance

HUMAN CATERPILLARS

BUILT HIGHWAYS OF POWER RIGHT IN YOUR OWN BACK YARD



MOTHER NATURE does not give up her treasures easily—whether they are precious metals, coal or power from mountain torrents.

The High Sierras—in your own back yard—contained hundreds of thousands of potential horsepower. Southern California needed this power; needed it badly for its rapidly growing population and industries, but Nature had provided only the source and this was inaccessible.

Roads—one of which cost \$50,000 per mile—had to be built along the face of mountains of granite; tunnels had to be blasted through solid rock to reach the source of power. When these roads were completed a steady stream of trucks carried men, material and machinery to construct the great dams, tunnels and hydro-electric plants of the Edison Company which now serve Central and Southern California with low-cost power.

These roads were a history-making achievement, leading the way to greater industrial and agricultural development in this territory and contributing to the prosperity of every resident.

SOUTHERN CALIFORNIA EDISON COMPANY LTD.
HARRY J. BAUER, President

A community enterprise... today as always, contributing to and anticipating the assured growth and progress of Central and Southern California

Fight High Living Costs 4 Ways

With a Westinghouse Streamline REFRIGERATOR

1. By Quantity Buying
2. Making More Use of "Leftovers"
3. "Stocking Up" on Bargain Days
4. Saving on Refrigeration Costs

No Down Payment-3 Years to Pay Under FHA Plan Now Available To Renters and Home Owners

Torrance Electric Shop
1419 Maricopa Ave. Phone 567

Hurry as they will, they do need help

Busy feet can't cover all the ground. They need the help that a telephone alone can give. Have you a telephone in your home?

SOUTHERN CALIFORNIA TELEPHONE COMPANY
1266 Sartori Ave. Telephone Torrance 4603

TOURIST SLEEPING CARS Are Brimful of ECONOMY and COMFORT and Air-Conditioned

On Santa Fe Fast Trains— With a Porter in Charge— Immaculate Berths— Model Dressing Rooms— Perfection of Coolness— Refreshing Surroundings— MAKE THE TOURIST SLEEPING CAR RANK HIGH IN THE PULLMAN SERVICE, while the BERTH COST is only One-Half that of the Standard Sleeping Car.

Santa Fe Offices will quote the LOW FARES to all Eastern Points

FRED HARVEY MEALS In Santa Fe Dining Rooms or Dining Cars ARE: Complete— Inviting— Generous— Substantial— Low Priced— For the Traveler's Appetite—

A. T. SAVAGE, Agent
Santa Fe Station, Torrance. Phone 244

santa fe TICKET OFFICE AND TRAVEL BUREAU

Torrance Herald

With Which is Consolidated the Lomita News Published Every Thursday GROVER C. WHYTE, Editor-Publisher 1336 El Prado, Telephone Torrance 444 Torrance, California

MEMBER California Newspaper Publishers Association

Published weekly at Torrance, California, and entered as second class matter January 30, 1914, at the Postoffice at Torrance, California, under the Act of March 3, 1879.

OFFICIAL PAPER OF THE CITY OF TORRANCE Adjudicated a Legal Newspaper of Los Angeles County, Superior Court Case No. 218470, Dated March 22, 1927.

Subscription Rates in Advance

Anywhere in Los Angeles County	\$2.00 per year
Anywhere in the U. S. Outside of Los Angeles County	\$3.00 per year
Canada and Other Foreign Countries	\$5.00 per year
Single Copies	10 cents