

**All Advertisements**  
 Ordered for the newspaper are also published in the Tri-City Shopping News without extra charge.

**Only Newspaper Published In Torrance**

# Torrance Herald

Consolidated Edition of Torrance Herald & Lomita News

**Two Sections**  
**12 Pages**  
**This Issue**

TWENTY-FIRST YEAR—No. 34

TORRANCE, CALIFORNIA, THURSDAY, AUGUST 22, 1935

PER COPY 5c

## CITY SPONSORS WPA STUDY PROJECT OF BIXBY SLOUGH

First Official Step In Plan to Extend Harbor to Torrance Industrial Area Is Taken By Council Tuesday Night

First official step in the movement to dredge a channel and barge canal in Bixby slough to connect the harbor with the Torrance industrial district was given Tuesday evening when the Torrance city council voted unanimously to sponsor a study project under the WPA to assemble engineering data and prepare an application for federal funds to carry out the development.

The matter was presented to the city council by F. M. Andreani, who served as harbor commissioner from 1927 to 1932 and has given over 25 years study to the development of Bixby slough and similar industrial harbors throughout the world. Under the action taken Tuesday, the city will be obligated to the extent of \$200 to \$350 for the purchase of drafting paper, stationery and similar office supplies.

Officials of the WPA are enthusiastic over the project and have agreed to pay the salaries of the technical staff and clerical help necessary to make the study. Mr. Andreani stated, "It is estimated that approximately 25 'white collar' workers will be given employment for about 60 days at an estimated cost to the WPA of \$3,400. The sponsoring agent of the study project is also required to furnish quarters for the workers, but through co-operation of Chamber of Commerce directors, who are reported to be strongly in favor of conducting the survey, it is tentatively agreed to use the directors' room in the chamber building as an office. R. C. Buxton, president of the Chamber of Commerce, told members of the city council, F. R. Leonard, city engineer, was named supervisor, but as Mr. Leonard is to leave shortly on a month's vacation, Mr. Andreani offered to relieve the city engineer of much of the responsibility.

Under the application made to the WPA it was stipulated that the survey be made as far north as Torrance so as to eliminate any possibility of the city sponsoring a project which would not extend to its incorporated area.

Potentialities of the important harbor extension to serve Torrance industries was stressed by Mr. Andreani in his talk before the city council, as well as at a meeting with Chamber of Commerce directors on Monday. The task of dredging a channel, turning basin, and barge canal in Bixby slough is a comparatively simple one in contrast to the difficulties which had to be overcome in similar developments at Houston, Seattle, London and other industrial harbors, where locks and deep cuts had to be constructed. At no point in Bixby slough would it be necessary to construct locks, and the barge canal need not be more than 8 feet to 10 feet deep. Mr. Andreani stated, "Even the largest barges carrying 50,000 tons which serve New York harbor only draw about 7 feet of water, he said.

Cost of constructing the channel and barge canals was estimated at from \$2,000,000 to \$4,000,000, depending on how extensive a development was undertaken, Mr. Andreani declared.

## School Opens Sept. 10

Vacation Days Are Drawing to a Close For Torrance and Lomita Youth

Vacation days for the youth of Torrance are drawing to a close. According to official announcement, school will re-open for the fall semester, on Tuesday, September 10. Students at Torrance high are requested to report at the gymnasium at 9 o'clock a. m. on that day for assignments.

Registration of new students will be taken in the office from 9:30 to 11 o'clock, all other students to assemble in their home rooms during the same period.

Lunch will not be served on the first day, and school will close at 2:12 p. m. Regular sessions will be held beginning on Wednesday.

Several changes in personnel at the high school will be made, with new teachers being assigned to duty here.

Few changes in personnel are expected at Narbonne high school, or at the elementary schools in that city, where active preparations are now being made to receive the incoming students.

**OPERATION**  
 Edward Skelboham, of Lomita, is recovering from an operation performed Monday at a San Pedro hospital.

## Pageant of Progress Held One Week Later

Ballot Boxes For Queen Contest Placed In Stores This Week

Ballot boxes for voting on the public's choice for queen of the pageant of progress will be placed in the stores about town this week, according to Frank Parkin, general manager. Votes may be obtained from the merchants and are to be placed in the boxes to the credit of the candidates. Those who have entered to date are Jeanette Mikelson, who was chosen to represent Torrance in the Venice-Mardi Gras on August 11; Miss Arlis L. Miller, 1221 El Prado; and Miss Zola Harris, 724 Border avenue.

Dates of the affair have been changed from August 21, September 1 and 2 to one week later, or September 4, 7 and 8, starting on Friday and closing on Sunday.

One of the features of the affair will be a wedding ceremony, with Miss Myrtle Gregg and Ernest McC. Longstreet, as the participants. The young couple will be presented with a number of gifts from the merchants of Torrance.

There is still an opportunity for candidates for queen to enter the contest. The judges' selection will be made September 4. All young women of Torrance between the ages of 16 and 25 are eligible. Votes cast, attesting to the popularity of the candidate will be the deciding element.

## Report Of C. of C. Meeting Is Given

By L. J. GILMEISTER, Secretary, Chamber of Commerce

At a meeting of the directors of the Torrance Chamber of Commerce, held last Monday, August 19, several members of the Torrance Pageant of Progress committee were present for the purpose of soliciting financial assistance in their campaign for funds to conduct a three-day local celebration on September 6, 7 and 8, which event is planned to be an annual affair. Widespread interest has been generated in this celebration, particularly by concessionaires from which source sufficient revenue will be realized to enable arrangements for an outstanding celebration to which will be attracted many thousands of visitors locally and from surrounding areas. Publicity resulting from this activity, it is believed, will be reflected in the Torrance Chamber of Commerce in their decision to appropriate \$200.00 to the Pageant of Progress committee.

Applications of 23 industrial, commercial and civic representatives for membership in the Chamber of Commerce were approved, they being: Torrance Motor Company; Smart & Pina's; American Barber Shop; Willy's Auto Agency; Pacific Smelting Company; Allen H. Paul; Baker Smith; Joe Koch; Torrance Furniture Company; Chas. Elman; W. E. Bowen; H. Mel Roberts; F. W. Woolworth Company; J. J. Newberry Company; Van de Kamp's Bakery; Axelson Manufacturing Company; Business and Professional Women's Club; Carl Warner; M. G. Brumby; and Robert F. Lessing.

Authorization for the preparation and presentation of courtesy cards to out-of-state visitors was granted. This practice has proven to be highly successful in several past years, attracting the nation in favor of attraction to interesting events and activities in the areas in which it has been conducted.

An interesting discussion was led by Mr. Andreani, formerly of the Los Angeles harbor board of commissioners, regarding the proposed development of Bixby slough. Considerable interest has been received in this respect, and conditions are highly favorable for such development, according to Mr. Andreani. Further action regarding this project is to be taken at future meetings.

**ODD ACCIDENT**  
 Oscar Fulmer, 2517 El Dorado, was given first aid at the Jappel Sledgey Torrance Memorial hospital last week for a deep laceration in the palm of his left hand in which three stitches were taken. The porcelain handle of a water faucet broke, inflicting a painful wound.

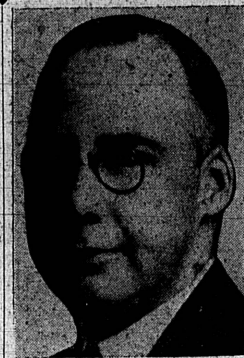
## SUDDEN DEATH OF BANKER PROFOUNDLY SHOCKS CITY

James Weston Leech, Manager for Ten Years of Bank of America, Passes Away Monday From Heart Ailment

Yesterday afternoon, the city of Torrance paused to pay its last tribute of friendship and respect to one of its most lovable citizens, James Weston Leech, whose sudden death shortly before noon on Monday profoundly shocked the community. Those who could, gathered at the Stone & Myers chapel, to bid farewell to their good friend and jovial associate. Those who were unable to be personally present, in their thoughts joined with the mourners at chapel and the grave, in silent but heartfelt regret at the sudden closing of a useful, upright life.

For the past two weeks, Mr. Leech had been feeling indisposed, but daily took his place at the Bank of America, where for the past ten years, he has been in charge as manager. He consulted and received the advice and care of physicians, on Saturday morning of last week seeing a specialist in Los Angeles, who ordered him to bed for two weeks of complete rest. His ailment was not believed to be of a nature so serious that rest would not bring about improvement.

On Sunday he was taken with a serious heart attack and late that



J. W. LEECH

## New Plan Filed For Improvement of Cabrillo Avenue to Sepulveda

An entirely new set-up for the widening and improvement of Cabrillo avenue paving was filed yesterday by City Engineer F. R. Leonard with state and federal authorities, who have given encouraging assurance that the work can be done at an early date without direct cost to the City of Torrance or individual property owners.

Hopes long cherished by property owners on Cabrillo avenue were recently shattered by the death of Mrs. Amalie Kettler through whose property it was planned to extend Cabrillo to connect with Eghelman avenue in Lomita. However, under the revised plan, the Kettler Estate is not affected. Briefly, the application as filed with the state highway engineer yesterday contemplates:

- Resurfacing the east side of El Prado (extension of Cabrillo) between Western avenue and the Pacific Electric depot (213th street);
- Widening and paving 16 feet on west side of Cabrillo through business district between P. E. depot and Carson street;
- Resurfacing west side of Cabrillo between Carson and Plaza del Amo, and one block of east side of Cabrillo south of Carson;
- Paving 24-foot strip with six-foot shoulder on each side of Cabrillo between Plaza del Amo and Sepulveda boulevard.

## Federal Aid Is Sought For Torrance Boulevard Extension

Improvement of Torrance boulevard between Western and Normandie avenues and the installation of sewers in the Belle Porte avenue and 253rd street district are among the projects for which Los Angeles city is seeking federal aid, that are of interest to Torrance.

Cost of improving Torrance boulevard between the above limits, which would serve the new plant of the Hughes-Mitchell Process Company, is given as \$1,481 for the city's share, and \$2,872 for the state's share, and \$7,293 for the share to be contributed by the Emergency Public Works Administration.

The Belle Porte avenue and 253rd street district project would be more costly of the several in the shoeing district, the city's share being \$24,160, and the EPW share \$39,190. In another application, it is proposed to eliminate a dead end sewer in the Belle Porte avenue district at 253rd street, at a cost of \$7,208 to the city and \$122,782 to the EPW.

Another project of local interest is the Pine Crest drive and Lomita drive sewer district, the city to contribute \$1,393 and the EPW share being given as \$2,503. Extension of Vermont avenue across Nigger Slough north of 182nd street also is proposed, at a cost of \$1,438 to the city and \$23,037 to the EPW. Improvement of two links of

## Co-ordinating Council Meets To Discuss Case

Investigation of Juvenile Delinquency Referred to the County Health Dept.

The co-ordinating council, recently organized, took its first official session of undesirable conditions in Torrance Monday morning, when it discussed a flagrant morals situation involving juveniles, and delegated an investigation to be made by a visiting nurse from the county health department. Further action, if found necessary, will be taken on receipt of her report later.

The council met at 9 o'clock Monday at the city hall, with a good attendance, representing the three divisions, which later held committee meetings at the close of the regular council session.

Date of regular meetings of the council was fixed for the first Saturday in each month, at 9 o'clock.

Thomas Hood, who was active in securing the organization of the council, was delegated to secure information on a toy loan plan, now in use in other communities. Broken, repairable toys are gathered to be mended and loaned out for varying periods to children whose families lack means to supply them. At present a central repair shop is maintained at the Manchester playground, but possibly a repair shop will be set up in Torrance to take care of the local work. By this means jobs will be created for one or two or possibly more unemployed persons, depending on the supply of toys to be mended.

## Metropolitan District Tax Will Be Double

Tax rate of the Metropolitan water district for 1935-36 will be exactly double what it was last year, by action of the board of directors at their last meeting late Friday afternoon. The new levy will be 20 cents per \$100 of assessed valuation, against 10 cents last year.

Reason for the increase, it was explained, is due to the additional millions of bonds sold during the past year, in order to finance construction projects along the 380-mile aqueduct to the Colorado river. To pay interest on the bonds, it will require \$3,486,091.68 this year, as compared with approximately half that amount last year. In Los Angeles county, the district levied \$1,440,125.92 in taxes last year.

More Directors  
 Long Beach hereafter will have 15 votes on the board of directors, three more than last year, by action of the directors. Member cities of the district are allowed one vote for each \$10,000,000 of assessed valuation, or two votes if the figure is more than \$5,000,000 additional.

Since Long Beach was entitled to three more votes this year, the directors also gave Los Angeles three more votes, to permit Los Angeles to keep its balance on the board. The act creating the district provides that Los Angeles may never have more than one-half the number of directors, and the maximum is therefore maintained. Giving Long Beach three more votes raised the total for the member cities exclusive of Los Angeles from 41 to 47.

Votes now are allotted member cities as follows: Beverly Hills, 5; Burbank, 2; Compton, 1; Glendale, 5; Long Beach, 15; Los Angeles, 47; Pasadena, 8; San Marino, 2; Santa Monica, 4; Torrance, 2; Anaheim, 1; Fullerton, 1, and Santa Ana, 1, total 84, as compared with 88 last year.

Construction of the district's Cajalco reservoir, in Riverside county, is scheduled to be under way shortly following award of the contract to the Griffin Company for its low bid of \$4,648,556.50.

## DATE OF BOND ELECTION FOR THREE BUILDINGS TO BE SET

Voters to Be Asked to Provide Funds For City's Share of New Library, City Hall and Auditorium Buildings; Tentative Figures Revealed

Definite action in calling a special municipal bond election to provide funds for the erection of a municipal library building, auditorium and new city hall is expected to be taken tomorrow afternoon when the Torrance city council meets at 5 o'clock, at an adjourned meeting to pass up ordinances prepared by the law firm of O'Melveny, Tuller & Meyer, special counsel employed by the city on bond matters.

While definite figures have not been announced, it is generally understood that three bond issues totaling approximately \$85,000 will be submitted to the electorate. It is anticipated, however, that only about \$74,000 of the issue will be required to meet the city's portion of the three projects, the total cost of which is estimated at \$121,000. The balance of the cost will be borne by the federal government. Tentative estimates of the cost of the land and erection of the buildings are as follows:

- Auditorium, including seats and other fixtures, \$55,000;
- City hall and certain fixtures, \$42,000;
- Library building, \$26,000.

Each project will be submitted separately, so that voters may approve any or all of the improvements. Under the plans as announced by the Works Progress Administration, federal grants equal to 45 percent of the cost of the labor and materials required to erect such buildings will be provided, and for this reason city officials believe it is the opportune time to launch construction programs to take care of future needs. Inasmuch as all taxpayers will be required to bear a share of the \$1,800,000,000 federal work relief program, it is felt that unless Torrance undertakes these needed projects at this time, that local taxpayers will not receive their share of the benefits of the federal expenditures.

## WOMAN INJURED

Mrs. Mary Chelson, 2427 24th street, Lomita, was knocked down and badly bruised Saturday when she was struck by a car which swerved on to the sidewalk. She was given first aid by a Lomita physician.

## Tax Rate Maintained

Same Figure As Last Year Adopted By Council For General Government

There will be no increase in the municipal tax rate for city government purposes this year. Approval of the tax ordinance at an adjourned regular meeting of the city council last Tuesday evening, fixed the rate in District No. 1, which comprises the original tract of the City of Torrance, at 95 cents, the same rate, as maintained last year.

This rate includes 80 cents for the general budget fund, 10 cents for parks, music and advertising, and 5 cents for interest and sinking fund on bonds issued under authority of an election held in 1922.

Annexed portions of the city pay no levy for interest and sinking fund, making their rate for general government only 90 cents. In addition to these rates, the council provided for a six-cent rate to be paid by the entire city, both original and annexed portions, for library purposes.

This appears on the face of it to be an increase in the municipal tax, but so far as the individual taxpayer is concerned, is not an increase, but the same rate as was paid last year when the county rate included the sinking fund for library purposes, which item for library was transferred from the county tax bill to the municipal bill.

Consequently, while the Torrance municipal rate is apparently increased by six cents, the county rate is lowered by the same amount, making no actual change in the amount of taxes paid. The decision to withdraw from the county free library system, may in fact be the means of a saving to the Torrance taxpayer, as it is expected that the county library rate will be increased over the amount levied last year.

While the county rate has not yet been fixed, and probably will not be announced until the end of the month, some increase in the total tax assessment to be levied by the board of supervisors is expected. Budget set up for county flood control expenses forecasts an increase of two cents in this department. No increase in taxes for the maintenance of the Metropolitan Sewer districts is anticipated with the possible exception of District No. 5, which includes Torrance.

## Preliminary Hearing Aug. 28

Following a coroner's inquest inquest into the death of Richard Tanaka, who died of a skull fracture following an automobile accident on Redondo-Wilmington boulevard, August 8, Eddie Merrill, of Lomita, was arraigned before Judge Monroe, in the Inglewood justice court on August 14 on a charge of manslaughter. His preliminary hearing will be held August 23. He was returned to the county jail in default of \$2,000 bond.

## Postal Inspector Dies Suddenly

Postoffice employes in this section heard with regret this week of the sudden death of Edgar H. Kline, postal inspector, head of the Los Angeles staff of inspectors, who passed away suddenly last Sunday on a train near Baltimore, Maryland. Mr. Kline had been in the service about 30 years, and was well known among the department employes in Los Angeles county through his frequent visits to the various offices.

## Girl Is Injured By Flying Glass

Miss Eva Mize, daughter of Mrs. Frances Mize, 1643 Acacia, was injured last Thursday evening, when her car turned over at the intersection of Beech and Sonoma avenues, after a collision with a machine driven by James Miller, 2093 Plaza del Amo. Miss Mize was struck in the eye by a piece of glass, which was removed by a physician.