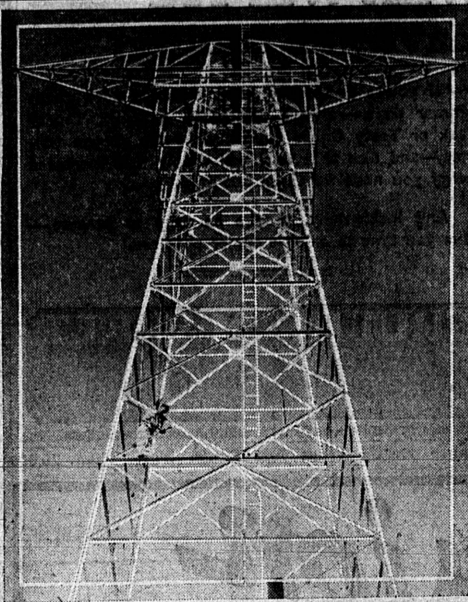


"BAIL OUT" at SAN DIEGO EXPOSITION



Latest European amusement sensation, the "Bail Out" is presented for the first time in America at the California Pacific International Exposition at San Diego. The workman seen on the left side of the tower, about an inch from the bottom of the photo, in reality is more than 60 feet from the ground, which gives you an idea of the enormous height of the structure. World's fair visitors are permitted to leap from the top of the tower and glide, quite safely, to the ground, supported by a captive parachute.

School District Tax Rate Will Be Increased

Fourteen Cents Added As Result of Budget Adopted This Week

The Los Angeles school district tax rate will be raised from \$1.15 to \$1.29 as the result of adoption of a \$32,967,708 budget by the board of education this week. It was announced yesterday. Only George W. McMillan voted against the increased budget.

Property owners in this community and others throughout the school district and representatives of the California Taxpayers' Association had sought a reduction in the budget on the grounds that the addition of public utility property to the tax rolls of the district would raise sufficient additional funds without increasing the tax rate.

Thousands of form letters, gotten out by the association and signed by property owners, protested any increase in the tax rate. A majority of the board members, however, asserted that unless the budget was increased, further cuts in teachers' salaries would be necessitated.

This year's budget carries \$423,268 less of expendable funds than last year, but a cash reserve of \$1,000,000 is to be set up, thus explaining the increase.

Since the public hearing on the budget last week \$38,000 was added for tuition of Los Angeles district children in other districts and \$5,000 was added for an inter-school mail system.

The budget now is in the hands of County Superintendent of Schools Archie R. Clifton and will be passed on to the board of supervisors for final approval by August 15. The supervisors will formally fix the tax rate on September 1, but this is considered merely a matter of routine, as the budget necessitates a rate of \$1.29 per \$100, an increase of 14 cents over last year.

Romance and History Blend in Famed Greenfield Village



Ford Exposition Visitors See Miniature Reproductions of Old Structures

History and romance blend with old buildings and a colonial setting at Greenfield Village, Michigan. The historical buildings, which have been moved or reconstructed as exact duplicates of the originals, circle a "green" as they did in all colonial communities. A model of this interesting group of old buildings forms a part of the Ford Exposition at Balboa Park, San Diego.

Around the green are scattered the public buildings, the church, the school, the inn, the store, the courthouse and the town hall. Each structure has an historic background which is woven into the colonial days and into the lives of the country's leading citizens. One of the oldest buildings in Greenfield Village is Clinton Inn, which was built in 1831-32. It was a typical hovel of 100 years ago and stood in Clinton, Mich., where it was an overnight stop on the stagecoach run between Detroit and Chicago up to the early fifties. One of the last dances held on the spring ballroom floor was on New Year's in 1876. The Inn has been furnished in the style of the early days.

In the steeple of the Chapel of Martha-Mary is a bell which was cast by a son of Paul Revere. The church overlooks the green and is open to worshippers of all creeds and serves the residents of the village and pupils of the school as a retreat and religious center. The chapel was named for the mothers of Mr. and Mrs. Henry Ford. The bricks and front doors are from the girlhood home of Mrs. Ford and the first one was turned by her when its erection was begun.

Directly above is the Chapel of Martha-Mary which stands today in Henry Ford's Greenfield Village, at Dearborn, Michigan. A miniature reproduction is included in the model of Greenfield Village in the Ford Exposition building, Balboa Park, San Diego. The church is typical of colonial places of worship and is named after the mothers of Mr. and Mrs. Henry Ford. The photo at the upper left is of the Waterford, Michigan, store and Clinton, Michigan, Inn as they appear today in Greenfield Village where they have been removed from their original locations. Clinton Inn is about 100 years old and served as an overnight stop on the stagecoach run between Detroit and Chicago. Miniatures are included in the model at the Ford Exposition. The photograph at the top right is that of the Lincoln courthouse where Abraham Lincoln practiced law for eight years in Logan county, Illinois. The structure is made of black walnut and the original was moved to Greenfield Village. It, too, is reproduced in the model at the Exposition.

The town hall is located on the east end of the common, directly opposite the chapel. It is an impressive white building which now serves as the town hall, although during the past year it has been used as a school. The interior includes a rostrum stage at the west end and an old-style stove in front with stovepipes crossing the stage. Abraham Lincoln practiced law for eight years in the Lincoln Courthouse which was formerly in Logan county, Illinois, but which now stands in Greenfield Village. It was first built in 1840 as a two-story frame structure of black walnut. One of the articles of furniture in it is the original corner cupboard fashioned by young "Abe" Lincoln and his father to pay for a book borrowed from a neighbor and spoiled. Greenfield Village at Dearborn, Michigan, occupies 200 acres and includes many buildings in which the handicraft arts of the past are presented as they were practiced in their original environment of public buildings and residences which in their turn, illustrate the development of architectural types.

Whiskey Revives Weary Bird

MOBILE, Ala. (U.P.)—A sparrow fell to the earth in front of Al Berlin's store, overcome by the heat. Berlin mixed a few drops of whiskey with a few drops of water, poured them down the open beak. The bird popped off his hand and flew away thoroughly refreshed.

Canada Aids Dairy Industry

OTTAWA, Ont. (U.P.)—The Canadian government will spend \$1,000,000 this year in an effort to stabilize the dairy industry. The money will be used to support the cheese market until prices reach the level of butter prices and are above world prices now received by Canadian cheese producers.

MODERNIZE

EQUIP YOUR CAR with a set of Air Balloons. Liberal allowance for your old equipment. Ask for Budget Department

As low as \$2.50 weekly

Firestone

AUTO SUPPLY AND SERVICE STORES

Cravens and Marcelina TORRANCE Phone 476

Place your order now for your

Gaffers and Sattler Range
Electrolux Refrigerator
Westinghouse Washing Machine
And Westinghouse Ironer

Special Low Terms!
Small Down Payment and Easy Monthly Terms

Economize at Shank's
24618 Narbonne Avenue, Lomita
Phone 220-W

SCOOP! Amazing Bargain!

Nationally Known
High Quality Refrigerator

TEMPORARILY REDUCED TO MEET COMPETITION

Built to Sell for \$179.50
Reduced for Limited Time—

\$144.50

Plus Tax

Pay Only \$4.63 Month

STEWART WARNER

Safety-Zone REFRIGERATION

No Payment Down, 3 Years to Pay!

REMEMBER... This is a Family Size, 6 cu. ft. capacity refrigerator, built to the exacting standards of a nationally recognized QUALITY manufacturer.

DON'T CONFUSE this refrigerator with inferior ones offered at the same price.

CONSIDER its outstanding features... Porcelain Exterior Finish... Super-Sensitive Temperature Control... Porcelain Interior Finish... Automatic Temperature Regulator... Pure Aluminum Freezing Trays and Grids... Double-Sealed Insulation... Variable Freezing Control... Constant Air Circulation... and Many, Many Exceptional Advantages.

This Sensational Bargain Can't Last Long... So Act Now!

Torrance Furniture Co.
SAM LEVY, Proprietor
1334 El Prado Phone 37-W

IN SOCIETY

ARIZONA FOLKS VISIT HERE

Mrs. J. W. Leech, 1630 Amopala avenue, had as their house guests for several days, Mrs. Leech's mother, Mrs. Carrie Vail, Mr. and Mrs. D. E. Garvey and children, Miss Dorothy and Danny, Jr., of Tucson, Arizona. Mr. Garvey is treasurer of Pima county in Arizona. The party have taken a cottage at Hermosa for the month of August.

SHOWER HONORS

MRS. WARREN McMILLAN
One of Wednesday's loveliest affairs was the luncheon and stork shower given at the home of Mrs. Mame Ebert, Los Angeles, by Mrs. Edith McMillan and Mrs. Ebert for Mrs. Warren McMillan, of Westwood.

Torrance folks attending the affair included Mesdames Frank Weiss, Sam Levy, J. S. Lancaster, J. W. Post, Grover C. Whyte, Sherwood McIntyre, Ray Young, George Peckham, Bert Lanz and Mrs. McMillan. A prize for high score in bridge play was won by Mrs. Levy.

SUPPER AND BRIDGE AT BROOKS HOME

The garden supper given Wednesday evening by ladies of St. Cecilia gUILD of St. Andrew's Episcopal church at the home of Mr. and Mrs. Willis Brooks, 1828 Portola avenue, was one of the season's nicest affairs.

After the supper bridge was played in the house, where ten tables were nicely arranged. Prizes for high scores were captured by Mrs. Nora Deininger and Hugh Barnes. Consolation prizes were awarded to Mrs. Lucille Lewellen and Robert Abbott.

MRS. RALSTON HURT

Mrs. Gertrude Ralston is confined to her bed with a sprained back and severe bruises, sustained when she fell down stairs at her home, 1667 Gramercy avenue, Saturday afternoon at 3:30 o'clock. X-rays taken at the Torrance hospital Monday revealed no broken bones.

Lights Illuminate Bay Bridge for Nocturnal Workers



Mrs. N. Robinson Taken By Death

Mrs. Nellie Robinson, wife of Robert F. Robinson, passed away August 4 at her home, 2184 254th street, Lomita, after a long illness. She was 55 years of age. The family has resided in Lomita for the past seven months.

Mrs. Robinson leaves besides her husband, one daughter, Mrs. Clarence Swanson, of Waverly, and three sons, William and Fred, of San Pedro, and Frank, of Delano, California. Funeral services were held Tuesday from Stone & Myers chapel, with interment at Wilmington cemetery.

Juveniles In Varied Program Next Wednesday

Another entertaining program by the Recreation Dept. will be given Wednesday evening at the local high school. This program will be an all-children's production, given by juveniles of exceptional ability. The programs of the past two months have been presented by the local group of professionals, but this time the youngsters will be given an opportunity to display their ability, and a program of music and dancing is being prepared that shows a very high degree of talent.

Recreation Department Presents Youthful Artists of Torrance

The following numbers will be presented:
Violin Solo.....Marcella Paul
Tap Dance Solo.....Marilyn Steele
Clarinet Solo.....Harry Williams
Paul Gilliam's Kid Hibbittles—
Bob Tolson, Hans Sommers and Richard Miller.
Vocal Trio.....Marjorie Paige, Coral Lindeman, Muriel Alverson
Piano Quartet (two pianos)—
Coral Lindeman, Bernice Frisbie, Freda and Jean Ohlman.

Also several dance numbers representing the Redondo Recreation project, including James, the talented little colored boy.

STORY 2

Continued from Page 1

When in your estimation, will there be a demand for an industrial harbor in the Bixby Slough area? and he replied, 'I'd advise to start tomorrow.' He also stated that the benefits of such industrial harbor would be felt as far as the Mississippi valley, and should be a free port be established, the effect would be felt back as far as Maine.

"The key to the situation would be crossing Harbor boulevard from the west basin, the pierhead line of which has been left open by the United States engineers for such very purpose; then from an inner basin barges could go in one direction as far as Redondo, in another to Torrance, and still another to Gaventa, and when we consider that 95 percent of the tonnage of New York harbor, 90 percent of London, and practically all of Liverpool tonnage is handled on lighters, we realize the importance of barge canals.

"When we consider that of the 56 most important harbors in the United States 22 are inland, that is Great Lakes and rivers, and served by artificial waterways, we should realize the opportunity we have to develop such facilities in our own area.

"Our industrial leaders may be personified by Henry Ford, who said on this subject, 'The location of a new industrial plant is largely determined by the cost of its power and the price at which it may be made and ship goods. As far as possible we locate all our plants on the water and on inland waterways. It is less expensive to load boats than freight cars.'
"The future of Southern California depends on industrial expansion. We have every opportunity for economically providing a modern, commodious and ideal industrial harbor, and now is the time to act."



BOILER ROOM—LONG BEACH STEAM STATION
The electric service facilities of the Southern California Edison Company are miracles of this modern age.

WOODBURN'S

ARLINGTON and CARSON PHONE TORRANCE 175

GOLDEN STATE	Butter . . . lb. 33¢	Beef Roast lb. 15¢	SEEDLESS Grapes . . 5 lbs. 10¢
M. J. B.	Coffee . . . lb. 29¢	Hamburger lb. 15¢	FANCY ELBERTA 45c a Lug Peaches 5 lbs. 10¢
LIBBY'S No. 2 Can	Tomato JUICE 2 for 15¢	Jewel Compound Per lb. 15¢	GRAVENSTEIN Apples . . 10 lbs. 25¢
	Oleo . . . 2 lbs. 27¢	BULK COTTAGE Cheese . . . lb. 12¢	Watermelons ea. 10¢