

PHONE

Torrance 444
FOR CLASSIFIED AD SERVICE

The Most Economical—Yet the Most "SURE-FIRE" Method For Getting Results. No Matter What You Want to Buy . . . or Sell.

Use the
CLASSIFIED ADS
Published in the
TORRANCE HERALD - LOMITA NEWS
and
TRI-CITY SHOPPING NEWS
AT ONE COST

Bulletin Ready On Black Widow

Farm Advisor M. B. Rounds, Los Angeles county, makes the announcement that a bulletin from the College of Agriculture, University of California, is now available on the subject of the Black Widow spider, from the office of the farm advisor, 624 North Spring street, Los Angeles. Copies of this bulletin are available for free distribution. The authors, Herms, Bailey and Ivor, give a complete description of the Black Widow spider, tell of its habits, its life history, something of the way it kills its prey, and give some suggestions on control. They also describe, in some detail, the effect of the bite of this spider on man and the treatment therefor.

Two Crimes in One
SMITHFIELD, N. C. (U.P.)—It was as much a crime to leave the three-day-old chicks unprotected from the cool night air as it was to steal the mother hen, a judge decided, and sentenced the negro defendant, who pleaded guilty, to 60 days.

OVER 5000 ATTEND OPENING OF QUALITY SUPER MARKET

Management Elated Over Record-Breaking Crowd Which Greeted Opening Last Friday and Saturday

All attendance records for the opening of any retail establishment in the history of Torrance were shattered last Friday and Saturday when the Quality Super-Market opened its beautiful new downtown market at 1325 Sartori avenue. To the accompaniment of banjo players and other professional entertainers who represented prominent food manufacturers, cash registers in the four departments of the new market chimed in to the tune of over 5,000 sales for the two days.

It was a grand and glorious welcome and forswore a highly successful business venture for the proprietors of the new market, three of whom, J. R. Klink, grocer, L. G. Barkdull, butcher, and Roy Yoshida, produce merchant, have

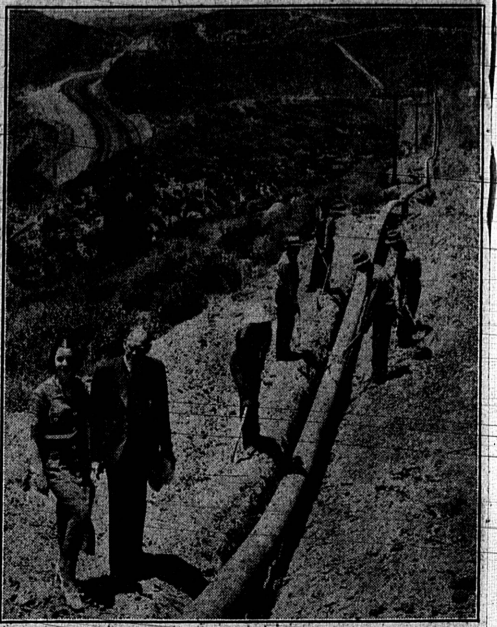
lowing the opening, grateful appreciation for the record-breaking reception was expressed. The management requested the Herald to extend sincere thanks to everyone who contributed in making the opening such a huge success, and particularly to express their hearty appreciation to the many kind friends who sent flowers for the occasion.

In another column of this issue, a big list of Friday and Saturday specials for this week are advertised, which may be obtained at either the new market at 1325 Sartori avenue or the original Quality Super-Market at 2111 Torrance boulevard.

Announcement of the new market was given in a four-page section of the Torrance Herald and Tri-City Shopping News, and the crowd which attended from miles around is an evidence of the extensive distribution and reader interest of these two publications.

Old Padlock Opened by Word
CHICAGO (U.P.)—To open an ancient English padlock owned by Mrs. D. R. Peache here, one must arrange its combination so that the letters spell the word "Christ."

World's Highest Pipeline Opened on Pacific Coast



Valerie Hobson, star of many Universal pictures, and E. L. Adams, vice-president of General Pipeline Company, inspect new million-dollar pipeline just before it goes into service, carrying oil to big refineries of General Petroleum Corporation.

Torrance now holds the distinction of being the terminus of a million-dollar pipeline, just completed for General Petroleum Corporation and now in operation. It is one of the Pacific coast's major construction projects for 1935.

Oil is flowing through this great line from Lebec to Torrance, a distance of 89 miles, at a rate as high as 60,000 barrels per day. It is forced to an altitude of 4,000 feet, and flows over the highest mountain pass to which such product has been pumped. It races along at the rate of 2,100,000 gallons per day. To move this oil by rail would require 200 oil tank cars, at a train almost two miles long, moving every day.

Such, in brief, is the engineering achievement of the General Pipeline Company, wholly owned subsidiary of General Petroleum Corporation.

NOICE RETURNS as manager at NEWBERRY'S

C. E. Noice was returned a manager of the J. J. Newberry Company store in Torrance this week, replacing G. E. Patterson resigned. Mr. Noice is well known in this community, having served as manager of the Newberry store until January, 1933, when he was transferred to Arizona. His wide circle of friends in this community welcome him back and are congratulating him upon his marriage to Miss Vada Kemp, of Santa Monica. The wedding took place about seven months ago.

Dandelion Scourge
ALAMOSA, Colo. (U.P.)—There are no dandelions in Alamosa. Mayor Everett Cole recently offered a theatre ticket to each boy and girl who would gather 15 pounds of dandelions. One hundred pounds were turned in the first day and 200 the second.

Torrance Merchants 4-HOUR SPECIALS

Red Hot Bargains . . . Good ONLY Between 1 P. M. and 5 P. M. This Saturday, June 29

After 5 P. M. Saturday, June 29, the Merchandise Advertised Below Will Be Sold At Regular Prices

at DOROTHY LOUISE SHOPPE
Marcelina Ave., Near the Postoffice

BATISTE FROCKS, \$1.95 Value.....\$1.50
COTTON FROCKS, \$1.50 Value.....\$1.00
SILK DRESSES, \$6.95 Values, \$3.95 ea.
Two for the Price of One or.....

BEAUTIFUL WHITE SUMMER HATS
Crocheted - Linen - Crepe
\$3.00 Values, \$1.00 and \$1.95

at J. LEPKIN MERCHANT TAILOR
1320 Sartori Avenue, Torrance

HURRY! Still Time To Order That
CUSTOM TAILORED SUIT
FOR JULY 4th
10% OFF If You Order Your Suit Saturday!
This Offer Includes Our Newest Summer Fabrics, Strictly Custom Tailored to Your Measure

at STAR Furniture Co. 1273 Sartori Ave. Torrance

Brand New **RADIO** Compact Table Model
4-Tube WITH DYNAMIC SPEAKER
Limited Quantity **\$9.95** 4-Hour Special
While Stock Lasts—Easy Terms

at DICK & CHUCK'S SERVICE
EVERETT, formerly at Moore Auto Co., has Moved to Dick & Chuck's Service Station CRAVENS AND MARCELINA

Complete VALVE GRIND Job
Includes grinding valves, tuning and adjusting motor, cleaning spark plugs, etc.

4 Cyl. Cars — \$2.00 6 Cyl. Cars — \$3.00 8 Cyl. Cars — \$4.00
LABOR ONLY

at SAM LEVY'S 1311 Sartori Ave. Torrance

4-Hour Special! — 400 Pairs
Children's Socks
MADE BY PHOENIX
Fresh New Summer Colors
Regular 29c and 35c Values
17c ALL SIZES
PAIR

at SUTTLE'S BEAUTY SALON
1302 Sartori Ave. Phone 438

LIMITED QUANTITY
Paris Luxury Cleansing Cream
1/2-LB. JAR (Regular \$2.50 Value).....**\$1.25**
A Special Purchase Made This Price Possible

at Howard's JEWELRY CO. 1503 Cabrillo Ave.

3-POWER FIELD GLASSES
WITH CARRYING STRAP
Splendid For Hunting, Sightseeing, Sports Events, etc.

4-HOUR SPECIAL, COMPLETE.....**95c**

at MOYES Quality Cleaners
1306 Sartori Avenue, Torrance

2 for 1 CLEANING SPECIAL
FRIDAY and SATURDAY ONLY, Suits or plain Dresses, Two for 75c; or two other Garments Cleaned and Pressed for the Price of One.

at Torrance Furniture Co. 1334 El Prado Phone 37-W
SAM LEVY, Proprietor

HOLLYWOODLAND — PART WOOL
DOUBLE BLANKETS
Size 66x80 Regular \$2.75 4-Hour Special **\$1.95** Beautiful Soft, Fluffy Blankets All New Colors

at DAVID JACOBS, Plumbing
1908 222nd St. Phone 358-W

Brand New Heavy (1/4-in. stock)
WHITE TOILET SEATS
Regular \$3.50 Value, 4-HOUR SPECIAL.....**\$2.65**
While They Last—Limited Supply

at PAXMAN'S Hardware 1219 El Prado Torrance

BAMBOO LAWN RAKES
SPECIAL
1 P. M. to 5 P. M. Saturday **10c**

at TORRANCE SUPER SERVICE
1312 Cabrillo Avenue, Torrance

ORIGINAL **POWER SEAL** Only \$2.00 When the Car Is Serviced or \$1.00 Self Service.
Restores Compression — Rejuvenates Motors
Renews Rings and Valve Action, Increases Power, Speed and Mileage, Seals Leaky and Pitted Valves and Reduces Oil Pumping.
D. Green GAS-OIL-TIRES E. Hein

at KOCH'S FAMILY SHOE STORE 1277 Sartori Ave.

Beginning at 8 A. M. Saturday
Regular \$2.95 and \$3.45
Plain and Fancy
WHITE PUMPS
\$1.69 and \$1.95

PENNEY'S 1269 Sartori Ave. Torrance

Beginning at 1 P. M. Sat.
Lunch Cloths
Gay Plaids, Part Linen Size 52x52. Lovely Pastel Plaids on a Neutral Ground **39c**

Watch Our Windows For Specials!

Cake Orders
Given Before 10 A. M. Delivered the Same Day!
PHONE 572
Orders of 25c or Over Delivered Free, Anytime

Whitney Bakery
1323 Sartori Ave., Torrance

NOTICE

Regarding
Interest Rates
On
Savings Accounts

Interest will be paid on all savings accounts for the six months ending June 30, 1935, at the annual rate of **2 1/2%**

TORRANCE NATIONAL BANK will continue to pay for the period commencing July 1, 1935, the existing rate of 2 1/2% on all savings accounts not exceeding \$3,000.

On any remaining portion of a savings account over \$3,000, interest at the rate of 2% per annum will be paid.

Deposits made or new accounts opened on or before July 10 will earn interest from July 1.

Torrance National Bank
"Your Community Bank"