

### Torrance Furniture Co.

Owned and Operated by Sam Levy  
1334 El Prado Torrance Phone 37-W

You Can Now Buy a New 1935  
**Modern Gas Range**  
At Only \$5 Down

Payments As Low As \$1.50 Month  
10% Allowance For Your Old Stove



## PLAY SUITS

You'll want several—better  
buy them now when  
selections are  
best.

- ◆ BLOUSE
- ◆ SHORTS
- ◆ SKIRT

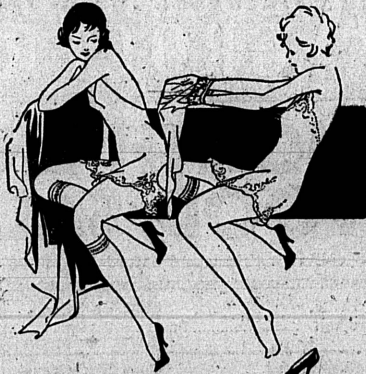
Three pieces complete in  
broadcloth or prints,  
stripes or plaids.

# \$1.95

3-PIECE SEERSUCKER  
SUITS, ultra smart styles,  
ONLY \$2.95

Sizes 14 to 40

## "YES! a knit-in garter-top!"



## HOLEPROOF KNEE-HIGH

Ends knee-stretch and knee-strain

... main causes of runs in hosiery

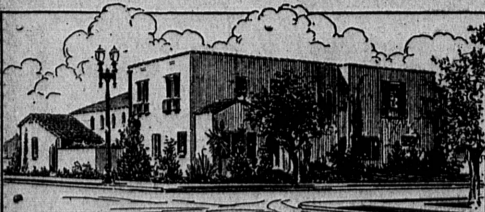
By actual test this new wonder stocking wears 25% to 50% longer than the ordinary kind! Because HOLEPROOF KNEE-HIGH comes just to the knee... does away with all the strain that starts so many runs. And all through this longer life KNEE-HIGH gives you far more comfort—and better style... with no unsightly garter-bumps to mar the smooth, sleek line fashion demands. It's the modern stocking. Here in newest shades... at

# 85¢

## SAM LEVY

1311-1313 Sartori Ave., Torrance

Subscribe For the Torrance Herald Now!



## STONE and MYERS Funeral Directors

Licensed Embalmers

TORRANCE: Cravens at Engracia Telephone 195  
LOMITA: 1204 Narbonne Ave. Telephone 347

AMBULANCE SERVICE

## CHURCH NOTES

**FIRST CHRISTIAN**  
Engracia at Arlington avenues.  
9:30 a. m., church school meeting in several assemblies with classes for every age. Scott R. Ludlow, superintendent.  
Morning service, 10:50 o'clock. Preaching and communion.  
Evening service, 7:30 o'clock. The evangelistic service of the church.  
8:30 o'clock Sunday evening, young people's Christian Endeavor.  
Wednesday, 7 p. m., the church night service led by the pastor. Choir rehearsal each Wednesday night at 8 o'clock.

**METHODIST EPISCOPAL CHURCH**  
El Prado and Manuel. Kemp J. Winkler, pastor.  
9:30 a. m., church school hour. Harry Sweet, superintendent. Classes for all ages.  
10:50 o'clock, morning worship service. Boys' Sunday. Sermon by the pastor, "If I Were a Boy." Boys and their fathers special guests.  
6:30 p. m., Epworth League hour for young people.  
7:30 o'clock, evening church service. Sermon by the pastor.

**CENTRAL EVANGELICAL CHURCH**  
Marcella and Arlington avenues. D. D. Wonder, minister.  
Sunday school at 9:45 a. m. E. Bowen, superintendent.  
Morning worship service at 11 o'clock. Sermon theme, "The Temple Beautiful."  
Christian Endeavor at 6:30 p. m. Evening worship at 7:30 o'clock. Special music and a brief message.

The fourth quarterly business meeting of the year will be held on Tuesday evening, April 30. All members are urged to be present.  
The Woman's Missionary Society will meet at the Guild hall on Thursday, May 2, at 2 p. m. Mrs. Fred Burmeister will be the hostess.

**FIRST LUTHERAN**  
Acacia avenue and 5th on a street. Frank D. Meching, pastor.  
Sunday school, 9:30 a. m.  
Morning service, 10:45 o'clock. Topic, "The Christian Church and the Resurrection."  
Choir rehearsal on Tuesday at 8 p. m.  
The Ladies' Missionary Society will meet on Thursday, May 2, 1935.

**CHRISTIAN SCIENCE CHURCHES**  
"Probation after Death" is the subject of the Lesson-Sermon on Sunday in all branches of The Mother Church, The First Church of Christ, Scientist, in Boston, Mass. The Golden Text is from the Psalms: "God will redeem my soul from the power of the grave: for he shall receive me."  
The Lesson-Sermon cites these verses from Paul's first epistle to the Corinthians: "Now this I say, brethren, that flesh and blood cannot inherit the kingdom of God; neither doth corruption inherit incorruption. For this corruptible must put on incorruption, and this mortal must put on immortality. So when this corruptible shall have put on incorruption, and this mortal shall have put on immortality, then shall be brought to pass the saying that is written, Death is swallowed up in victory."  
Among the correlative passages from the Christian Science text-book, "Science and Health with Key to the Scriptures," by Mary Baker Eddy, are the statements: "Universal salvation rests on progression and probation, and is unattainable without them." "Progress takes off human shackles. The finite must yield to the infinite."

**CATHOLIC CHURCH OF THE NATIVITY**  
Cota and Manuel avenues.  
Rev. Thomas Kennedy, pastor. Phone 332.  
Mass celebrated Sundays at 7:30 and 9:30 a. m.  
Sunday school, 10:30 a. m.  
Benediction, 7:30, Sunday evening.

**MEN'S BIBLE CLASS**  
A Bible class for the men of the community by the men of the community. Sessions held each Sunday morning at 9:30 o'clock at the Torrance Theatre. Harry F. Dierker, president, and Rev. G. G. Elder, teacher. All men are welcome.

**CAR CATCHES FIRE**  
A Nash sedan belonging to W. H. Lambert, 1109 Cravens avenue, caught fire while parked on Double street Tuesday night. A backfire ignited gasoline from a flooded carburetor. The Torrance fire department extinguished the blaze which caused practically no damage to the car.

An appropriation of \$15 to be used for the purchase of ribbons, etc., for the award of prizes at the Boy Scouts jamboree in May, was passed.

Councilman W. H. Tolson, appointed as a member of a committee to solve the problem of moving the Boy Scout hall from its location on Carson street to the municipal park, reported that the house cannot be moved without tearing it to pieces. Mr. Tolson also stated that the house as it stands is not a desirable asset to the park. The council has under consideration the erection of a new Scout hall at a later date.

## Spring Showing of General Motors Products Next Week

Telling the story of the year's striking progress in automobiles, a spring showing of General Motors products will be held in Los Angeles at the Ambassador auditorium, April 27 to May 4 inclusive. Plans of the large exhibit are announced by F. Norman Phelps, Los Angeles zone manager of the Chevrolet Motor Company, who is serving as general chairman of the exhibit.

The Los Angeles showing for Southern California will be part of a national presentation in 51 cities. Instead of simultaneous dates, as previously, this year's exhibit will be divided into three periods to conform more closely with local conditions. The Pacific coast exhibits will be under the general supervision of George R. Browder, from Detroit headquarters.

**Brilliant Display**  
The General Motors national showings last year attracted more than 4,000,000 visitors and it is expected that the coming exhibits will materially exceed that total. Each year brings increasing popularity to these brilliant displays with their added entertainment features. Business stimulation also reflects the high amount of interest created.

Decorators are transforming the Ambassador auditorium in Los Angeles into a sparkling setting for the exhibits which will include the latest models of Cadillac, LaSalle, Buick, Oldsmobile, Pontiac and Chevrolet, together with Frigidaires and electrical household appliances. The general decorative scheme will incorporate Venetian blinds flanked by orchid drapes. Green velvet will screen the walls. The spring flavor will be accentuated with white dogwood, giant palms and sprays of yellow wisteria.

**Action and Beauty**  
An illuminated centerpiece will bring action as well as beauty. This will be a revolving hexagonal cylinder, towering high with the panels bearing the names and car emblems of the General Motors divisions and the familiar slogan, "Body by Fisher."

The exterior of the auditorium also will be beautified by a pillared approach to the main entrance of West Eighth street. The whole plan, it is explained, will be the most elaborate ever designed for a General Motors exhibit in this section.

As has been the policy in these spring showings, admission will be free and special entertainment features, including concerts by outstanding orchestras, will be added.

## Around the Council Table

In response to a request made by Leslie Prince, of the Beacon Drug Company, for permission to install a semaphore signal attached to a light standard in front of his place of business, the city council on Tuesday night granted the request. The signal, Mr. Prince stated, will be used as a bus signal for the convenience of passengers, who will be spared the necessity of waiting outside in bad weather and at night, to be ready to hail the bus.

A petition from residents of Torrance west of Hawthorne boulevard for street signs to be erected in that section was granted.

The annual resolution authorizing the fire department to clean city lots, in case the owners fail to do so, was adopted. Weeds and grass are growing tall, and beginning to dry, setting up a fire hazard. Property owners are generally responsible for cleaning off the growth, but in the case of absentee owners whose addresses cannot be obtained, the city each year authorizes the fire department to take over the duty, in the interest of public safety.

The annual resolution authorizing the fire department to clean city lots, in case the owners fail to do so, was adopted. Weeds and grass are growing tall, and beginning to dry, setting up a fire hazard. Property owners are generally responsible for cleaning off the growth, but in the case of absentee owners whose addresses cannot be obtained, the city each year authorizes the fire department to take over the duty, in the interest of public safety.

The annual resolution authorizing the fire department to clean city lots, in case the owners fail to do so, was adopted. Weeds and grass are growing tall, and beginning to dry, setting up a fire hazard. Property owners are generally responsible for cleaning off the growth, but in the case of absentee owners whose addresses cannot be obtained, the city each year authorizes the fire department to take over the duty, in the interest of public safety.

sure, all are demanded by the fire insurance underwriters as a first principle before our insurance rates can be reduced. We have endeavored to comply with these conditions, and together with an efficient construction costs we are in a position to expect and demand a lower insurance rate that will amount to a big year by year saving to everyone. Water six miles away in such pipes as are now used will not be recognized by the insurance people.

"The type of wells to be drilled are claimed to be from at least 50% to 100% more efficient than the other type of wells. True, they are not the cheapest to drill, but a well is used for a long time, and cheapness in this case is not the main consideration. We are trying to bring in large production, on continuous operation and comparatively clear from sand. The government engineers have passed on the idea and we feel that our construction costs are warranted over a period of years when they bring results.

"The whole idea boils down to expedient expenditure of money to bring to pass a most efficient system. We can't afford to be penny wise and pound foolish."  
"The matter of land needed has been changed several times, in each instance cut down until instead of needing six acres as originally planned and asked for in our requests to the C.C.M.O., it now looks as though we can get along on two acres. We can't say that such practice is extravagant, nor was it done in face of threats. This was done by constant efforts on the part of our engineers to eliminate all needless expenditure. The highest point in the city was selected, and we then tried to get as reasonable a figure as possible. We would have to build a higher tank or get a higher piece of land, we felt that the higher piece of land was the most reasonable, and coupled with the fact that it lies in about the best location seemed to recommend it to us.

"We took the matter of Consulting Engineers selection up by comparative bids, and accepted the lowest, high-type or reputable engineer's bid. We presented to the government our proposal, and found that delay was to be expected, and many items of expense that could not be avoided in making such application. However, we were told that someone was working against our interests and caused delay there until that condition was corrected. Everything that has been done is subject to the closest scrutiny. We are not great financiers, but we used all the mind and intelligence ordinary men had, to carry this water system through as economically as possible.

"Men, privately employed as the councilmen are, cannot be absolutely familiar with every act of every employe, but we have tried to be fair with our men. Department heads have had to conduct an efficient department, cover a large area and we must put confidence into their ability to do a fine piece of work over such a large area, from Hollywood Riviera to the McDonald Tract.

"The councilmen have always listened to every petition, every word from the citizens of the city and will continue to do so. We absolutely deny that we have refused to listen and challenge anyone to prove such statements. As to the dictatorial attitude, all we can ask is that you attend the meetings and see what happens. Some semblance of order must be maintained, and if a councilman, any one of them, refuses to abide by the plain laws of order and sense, the chair must endeavor to maintain order. We have tried to

"The construction of a high steel tank for proper pressure at all times as well as steel storage tanks for an adequate supply of water to have on hand to run the city a safe number of hours in case of necessity is conceded by all. These tanks will be bid in and constructed in any event, no matter where we get our water. We must also install the proper chemical treatment plant to protect the water and insure its condition when it comes from the faucet. The bad tasting water, doped up by one of the poorest of methods in the old system must pass. We want water that we can drink and can take a bath in without apology or fear of disease. This water is not simply irrigation water. If it were just for lawns and etc., we could eliminate some of the very evident care planned to protect this water. But people, boys and girls, our folks, will drink this water and it must be right.

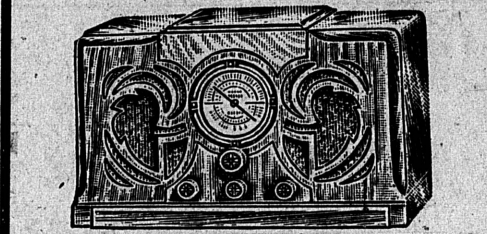
"The pipe system must be improved, sizes used at the proper places and certain pipe replaced that is too small. And important to the efficiency of the system, the leaks must be located and proper work done on the system to eliminate the 30% loss now taking place. We cannot reduce rates to as low a figure as it is possible with water leaking out to the tune of a 30% loss. Anyone can see the reason for that, and for that main reason we feel it necessary to put in the right pipe. We are putting in large pipe as main lines to put the right pressure to our homes and the factories. In case of fire good pressure is a veritable "God-send," and we are going to have that kind of a system. Water supply, proper sizes of pipes, proper pres-

be patient with every class of men, render a fair decision, and will not be threatened or coerced by the one councilman who will not abide by a majority vote. "We are willing to leave the outcome. "Thanks, "SCOTT R. LUDLOW."

**Star Furniture Co.**  
NRA 1273 Sartori, Torrance  
PHONE 620  
"WE CHALLENGE CITY PRICES"

"Music While You Drive"  
Or at Your Vacation Camp,  
with a  
**Packard-Bell Auto Radio**  
Splendid 5-tube Set  
that out-performs many automobile radios selling at higher prices.  
Very Special **\$25.95**  
EASY TERMS  
Full 90-Day Guarantee

Beautiful, Powerful, 6-tube  
**Packard-Bell Home Radio**  
new airplane dial with station names for quick tuning; tone control, full size chassis... it's a sweet value at \$29.95! The newest Packard-Bell!  
**\$29.95**  
Easy Terms



SEE THIS FEATURE STAR VALUE! - - -  
**2-Piece Suite with Choice of Coverings**



**\$39.50**  
Pay 75c Per Week  
\* VELVET or AXMINSTER Brand New and Perfect.  
\* CHOICE OF COLORS and PATTERNS. Suitable for Living or Bedrooms.

9x12  
**RUGS**  
Special  
**\$23.50**  
Pay 75c a Week

**SOUTHERN PACIFIC has 5**  
**COOL**  
**AIR-CONDITIONED**  
**TRAINS EAST**



Back East Fares Start May 15  
Summer excursion roundtrips for 1935 equal the lowest in history, and will be available for use daily from May 15 to October 15. Stopovers anywhere enroute. Here are a few examples:  
Coach Tourist Standard  
Chicago... \$57.35 \$68.80 \$86.00  
New York... 55.75 107.20 124.40  
Houston... 47.00 58.40 73.45  
Kansas City... 48.00 57.80 72.00  
New Orleans... 58.80 68.15 85.15  
Similar reductions in other eastern cities. Reserve now for any date.

Old Mexico This Summer  
First-class roundtrip fare to Mexico City is only \$29.05. By train, you see more of Mexico, and our West Coast route goes through the most interesting parts. Through, air-conditioned Pullman service.  
Let us tell you about the new, weekly Hotel Car Cruise, something new in travel adventure through Old Mexico.  
See Your Local Agent  
For skilled help in planning every detail of any trip—for rail and Pullman tickets and travel information—simply call upon or telephone your local Southern Pacific agent. He is a trained travel expert who will render you a real service without obligation.

Our exclusive Table D'Hote "meals select" are big money savers, too. Delicious, complete luncheons and dinners for only 80¢ to \$1.25.

**Southern Pacific**  
W. H. BHATTAN, Agent  
Pacific Electric Station, Torrance Phone Tor. 20

## Forward-looking True Americans Are Supporting - - -

These Candidates for the School Board:—  
William H. HENRY Clara Norris RAKESTRAW George A. BRIGGS Robert E. KEE

They are pledged to support the Constitution of the United States and the State of California, and to defend the rights of citizens under the constitution and laws, unceasingly and to the fullest extent to which they are capable.

They are also pledged to eliminate the menace of earthquakes in our public schools by the construction of steel-frame buildings.

**VOTE the PROGRESSIVE TICKET, ELECTION, MAY 7**