

### Contract Is Awarded For Steel Pipe Line From Mono To Harbor

Flow of water from the Mono basin aqueduct will reach across Los Angeles city from its most northerly to its extreme southerly tip by late summer, following the start of a \$500,000 pipeline job by the Department of Water and Power.

The department awarded a \$231,000 contract to the Southwest Welding Company for steel pipe to be laid in Western avenue, beginning near Manchester boulevard and extending southerly on Western and Normandie avenues through the Shoestring addition to the existing water system in San Pedro.

Labor, amounting to nearly \$250,000, will be furnished directly through the department. Between 400 and 500 men will be employed on the project, which will tie in with the huge landscaped reservoir on the western edge of Western avenue at approximately 100th street.

The successful bidder this week placed its orders for the 31-inch pipeline, and it will be approximately a month before actual construction is begun, according to water department officials. The pipe will be welded in several lengths and then lowered into place by huge cranes, to eliminate welding all sections in place.

Water for San Pedro will come through the aqueduct to upper San Fernando reservoir, thence into lower San Fernando reservoir, and thence to Hollywood reservoir, all by gravity flow. From this reservoir, now only a fraction of its original capacity, the water will flow into the line that eventually extends via Western avenue to Manchester boulevard and the 100th street reservoir.

Completion of the pipeline is expected to increase the flow from the Mono basin aqueduct considerably, as it is proposed to shut down a number of wells in the Wilmington district that now supply San Pedro and the harbor with water.

#### SMALL FIRE

Overheating in the drying room at the Rubbercraft Corporation plant on Border avenue, set fire to some frames, Friday night. The Torrance fire department made a quick run to the scene and extinguished the blaze before more than a small amount of damage had been done.

### Telephone Co. Will Celebrate Half Century

Two far-flung wide networks; one a telephone circuit to carry conversations from the four corners of the nation, and the other the Columbia network with 93 radio stations to which the telephone conversations will be delivered, will be used in a broadcast marking the 50th anniversary of the American Telephone and Telegraph Company next Sunday, April 28, from 8 to 4 p. m., Pacific time.

Released in Southern California through radio stations KHJ, Los Angeles, and KGB, San Diego, the program will include such celebrities of the air as Edwin C. Hill, Ted Husing, Channing Pollock and Andre Kostelanetz and his orchestra of 50 pieces, augmented by a chorus. Walter S. Gifford, president of the Bell Telephone system, will be interviewed by Hill.

Dramatization of the invention, development and modern uses of the telephone will be heard with Pollock participating. Millions in the radio audience will "listen in" on four long distance calls to be made to telephone officials in the furthest corners of the United States—San Diego, California; Eastport, Maine; Bellingham, Washington; and Key West, Florida. A highlight of the program will be the demonstration of telephone conference service with Ted Husing conducting a round-table meeting of prominent persons located in distant parts of the country. This promises to be one of the outstanding radio programs of the year with special interest to the 250,000 Bell System employees, to users of the nation's 13 1/2 million Bell telephones, and to the general public.

### News From Washington

By Your Congressman  
CHARLES J. GOLDEN

The much discussed Social Security bill is now before the House of Representatives. This bill contains not only old age pensions for those who have reached the age of 65, but it contains other important provisions including a system of federal old age benefits payable to people who have reached the age of 65 and which will begin in 1942.

The first title of the bill sets up the old age pension. It provides that the federal participation is not to exceed \$15 per month per person. It also provides that only those states that have an old age pension law conforming to the federal law may participate in the federal grant. It proposes that the federal government will match any amount granted by the state up to \$15 a month and does not place any limitation on the amount the state may pay.

As an illustration, the state of New York now pays an old age pension of \$10 per month. The federal proposal will add \$15 per month making a total of \$45 per person in the state of New York, but that state must change its law to secure federal participation. In some states the law provides that the county and city may also pay an old age pension.

Applying the federal proposal to the state of California, the state may pay any amount per month it may choose—\$10, \$20, \$30 or \$50 per month or more. If the state law of California authorizes it, the county could grant a pension at the will of the voters of the various political organizations. As an example, the state of California could provide by law for an old age pension of \$30 per month, the county of Los Angeles might add \$15 per month, the city of Los Angeles, by charter amendment and ratification by the state, might contribute \$10 per month or more. The federal government contributes an additional \$15 per month, so that the amount paid to each individual in each state will depend very largely upon the state and local contributions. Contrary to the seeming opinion of many, pension money does not grow on trees, and any pension system whether administered by federal, state, county or municipal government, must come out of all our pockets. It matters little from the taxpayer's viewpoint who does out the money as he must pay for it regardless.

Some states, of course, have far less taxable wealth than others and under any circumstances, the state provisions will vary greatly as to the amount of old age pension that can be paid. It is already evident from remarks that have been made in the House that the sentiment in such states as Arkansas and Mississippi, for instance, indicates that these states will not be able to pay in excess of \$15 per month. However, it may be said that the cost of living is probably much less in these states than in such states as New York and Pennsylvania.

One of the outstanding features of this old age pension provision of the bill is that the federal government does not administer or execute the old age pension law. That problem is left entirely to the various states. The federal government sets up certain requirements and

the requirements for the old age pension subject to the federal provisions.

An interesting feature of the old age benefit plan of the Social Security bill is that the reserve fund is to be invested in United States bonds. Thus, the government is not only providing the benefits for those who are employed but is also setting up a plan for investments in its own securities. The benefit provision only applies to those employees who are on a payroll of ten or more persons. Old age benefits do not apply to agriculture labor, domestic services in homes, casual labor, seamen, to federal or state and other political subdivisions nor to employees of community chests, foundations or other organizations that are operated without profits.

Other provisions of the Social Security bill provide for aid to the states to pay the administrative costs of state unemployment compensation and insurance sys-

tems. Another proviso grants aid to the states to help dependent children and in this case, the federal government contributes one-third. Another part of this bill grants aid to the states in matters pertaining to maternal and child welfare, the care of crippled children and vocational rehabilitation. Most of these grants are made on the basis of equal matching of the state appropriation. The bill also provides for aid to the states for the development of their public health services.

There was considerable agitation concerning the rule that was reported governing the procedure of the Social Security bill. Rumors are widely spread that a "gag" rule would be reported that would shut out all amendments such as the McGroarty, the Lundeen and the Rogers old age pension bills. However, the rule was much more generous than was anticipated. Because of the complexities of the rule, no pension bill could be given special consideration without a

### Young Man Dies After Operation

Funeral services were held Monday morning at 10:30 from Stone & Myers mortuary chapel in Torrance, for Marion O. Randles, age 27, son of Mr. and Mrs. G. M. Randles, 2474 25th street, Lomita. Interment was made at Inglewood Park cemetery. The young man passed away last Thursday at a Los Angeles hospital following an operation for appendicitis, with which he had been suddenly stricken. He was an employee of the Hydril Company in South Torrance, a graduate of Narbonne high school in 1931. He leaves besides his parents, a sister, Thureley, and a brother, Roland; also his grandmother, Mrs. Jennie Randles.

The general rules of the House provide for but one hour for general debate but the rule reported by the rules committee gives 20 hours for debate.

### CONSTRUCTION company is sued FOR DAMAGES

Severely injured when a heavy ladder fell upon him while he was employed in construction of the Hughes-Mitchell Processes Company's plant near Torrance, Chester E. Weaver, an electrical engineer, will seek \$25,000 damages in a suit on file today in Los Angeles county superior court. The Consolidated Steel Corporation, which has the contract for erection of the steel framed buildings, is named as defendant in the complaint. The accident occurred last January 17. In addition to his injuries, which still make it impossible for him to work, according to the complaint, Weaver asks \$900 for lost salary.

**COMPLETE COVERAGE**  
All Torrance Herald ads run in the Tri-City Shopping News without extra charge.

**Spring NUMBER** BE SURE TO GET **Out today** YOUR COPY

## FAMILY CIRCLE Magazine

BIGGER, BETTER, MORE COLORFUL.

Your free copy of the Spring issue of the Family Circle Magazine awaits you at your neighborhood Safeway Store. Bringing many added features, this bigger and more colorful number of the popular magazine will be a special treat for the whole family.

Also at your Safeway Store, you will find featured products that are advertised in the Family Circle Magazine. You'll want to take advantage of the prices quoted. Remember, if it's advertised in the Family Circle, it's at the best.

**FORMAY BLENDING SHORTENING**

1-lb. can **19c**  
(3-lb. can—52c)

**Max-i-mum Milk** Rich, Pure Evaporated **3 Tall Cans 19c**  
EVAPORATED MILK IS A NECESSITY IN THE MODERN KITCHEN. 3 SMALL CANS 10c

**Edwards' Coffee** Edwards' Dependable **1-Pound Vacuum Tin 23c**  
CHOICE QUALITY BLEND OF COFFEES, VACUUM PACKED. TWO POUND CAN 45c.

**Lipton's Tea** Small Size **9c** 1/2-lb. pkgs. **18c** 1-lb. pkgs. **35c**  
ORANGE PEKOE AND PEKOE-YELLOW LABEL. FINE-FLAVORED BLACK TEA.

**Camel Cigarettes** Nationally Popular **8 pkgs. 96c**  
TAKE ADVANTAGE OF THIS SPECIAL LOW PRICE ON CAMELS—FINER QUALITY.

**EveryDayLowPrices At Your Nearest Safeway Store.**

**JAMS AND SPREADS**

Marmalade King Kelly Orange, 16-oz. **15c**  
Grape Jam Welch's—16-oz. Jar **15c**  
Dinner Bell **2 lbs. 29c**  
Oleomargarine **2 lbs. 29c**  
Holeomargarine **2 lbs. 29c**

**PICNIC FOODS**

Sliced Beef Broadcast—2 1/2-oz. Jar **10c**  
Deviled Meat Libby's, 3/4-oz. Can **4c**  
Sausage Libby's Vienna, 3 1/2-oz. Cans **25c**  
Mustard French Salad—9-oz. Jar **12c**  
Pickles C.H.B. Sweet—Pint **19c**  
Sweet Mixed Pickles—C.H.B.—Pint **19c**  
Sweet Relish C.H.B.—Pint **19c**  
Large Olives Hemet Ripe, 6-oz. Can **10c**  
Jumbo Olives Hemet Ripe, No. 2 Can **17c**  
Mayonnaise Best Foods, 1/2-pt. 16c; Pt. **27c**  
Best Foods Mayonnaise—Qt. **45c**  
Napkins Green or Yellow **2 1/2-15c**  
Linen Tone—Paper **2 1/2-15c**  
Waxed Paper Cut Rite—40-ft. Roll **6c**

**FOR SPRING LUNCHES**

Chicken and Noodles Milan's—16-oz. Jar **23c**  
Noodles With Chicken Milan's **23c**  
Spanish Style—16-oz. Jar **23c**  
Jell-O Gelatin Dessert **3 1/2-17c**  
Beef Stew Old Fashion—24-oz. Can **15c**  
Tomato Soup Van Camp's—10 1/2-oz. Can **5c**

**LAUNDRY AIDS**

Sunbrite Cleanser **3 1/2-13c**  
Argo Starch Glose—12-oz. **7c**  
Elastic Glose Starch—12-oz. **9c**  
Scotch Soap Granulated—40-oz. **19c**  
Pronto Drain Opener—12-oz. Can **13c**

**MISCELLANEOUS**

Kidney Beans Stokely's—No. 2 Can **9c**  
Wesson Oil Quart, 43c; Pint **22c**  
Hershey Bars Almond or Milk **3 1/2-10c**  
Hershey Cocoa Breakfast Cocoa, 1-lb. Can **13c**  
Corn Meal Quaker White or Yellow—12-oz. pkg. **10c**  
Black Pepper Schilling's—2-oz. Can **7c**  
Schilling's Black Pepper—4-oz. Can **12c**

**Beech-Nut FRUIT DROPS OR CHEWING GUM 3 Pkgs. For 10c**  
Nationally known products that help sweeten the mouth and aid digestion.

**Blue Ribbon Malt LIGHT or DARK 3-POUND CAN 59c**  
Your choice of light or dark. Blue Ribbon, America's fastest selling malt syrup.

**Shredded Wheat UNEEDA BAKERS 12-OUNCE PACKAGE 12c**  
Whole grains, cooked and shredded into a delicious morning cereal.

**Lucerne Milk GRADE "A" RAW OR PASTEURIZED quart 9c**  
Rich, country fresh, Grade "A" milk. Raw or pasteurized. Drink milk every day.

**Favorite Matches CARTON OF SIX BOXES 21c**  
Strong, sturdy matches that light easily and burn steadily.

**Stokely's Catsup FINE FLAVOR 14-OZ. BOTTLE 11c**  
Stokely's Finest Tomato Catsup. Made from California-grown tomatoes.

**California Citrus Fruits**

Again Safeway turns its entire distribution force to the task of helping move this year's bumper citrus crop with beneficial results to both grower and the consumer. Eat more citrus fruit and help promote California prosperity.

**Oranges** All sizes of California grown oranges are featured this week in Safeway operated produce stands. Visit your nearest store, note the attractive displays and low prices.

**Grapfruit** Thin-skinned, juicy, California grown grapefruit are among the many fruits and vegetables of better quality that you'll find at the Safeway operated produce stand in your neighborhood.

SEE PAGE 8 IN THE SPRING NUMBER OF THE FAMILY CIRCLE.

**Airway Coffee SEE IT GROUND 1-POUND PACKAGE 17c**  
Mellow-mild Brazilian blend coffee. Three-pound package—49c. It's fresh!

**Rosedale Pineapple 4 SLICES No. 1 1/2 Can 10c**  
Four choice slices of golden-ripe pineapple. Rosedale brand—No. 1 1/2 can.

**Corn Flakes JERSEY BRAND 2 Pkg. For 13c**  
Jersey Brand—Extra-crisp corn flakes—Serve them with Luperne Milk.

**Libby Peaches DE LUXE GRADE No. 2 1/2 15c**  
Libby's De Luxe grade. Your choice of sliced or halves. No. 2 1/2 size can.

**Mariposa Peaches 2 No. 2 1/2 27c**  
Libby's De Luxe grade. Your choice of sliced or halves. No. 2 1/2 size can.

**Brooms CECIL BRUNER FIVE-SEW-EACH 55c RED LINE 4-SEW-EA. 37c**  
Sturdy built, yet light—Your choice of two excellent broom values.

**BAKERY GOODS**

**Jane Arden Bread 1 1/2 Lb. 10c**  
Top quality loaf—White or Wheat—1-1/2 lb. 7c.

**Tomato Bread 10c**  
Friday Special—16-ounce Loaf

**Grandma's Cake each 19c**  
Old Fashioned Pound Cake—Grandma's quality.

**DOG FOOD**

His Master's Choice

**CALO BRAND**

**2 16-OZ. CANS 15c**  
**2 8-OUNCE CANS 9c**

**BEVERAGES**

Coffee Maxwell House, 1-lb. Can **29c**  
Tea Edwards' Green "Cello" Bag, 1/2 lb. **8c** 1/2 lb. **15c**

**BROWN DERBY BEER**

11 in 12 oldtimers say it equals pre-war PILSNER.

**4 11-OZ. BOTTLES (Plus Deposit) 29c**

Prices effective Thursday, Friday and Saturday, April 25, 26, & 27 in Los Angeles City, Northern, Western and Southern Suburbs.

## Streamline Beauty

to please your eyes... year-after-year economy to please your pocketbook



## Westinghouse Streamline REFRIGERATOR

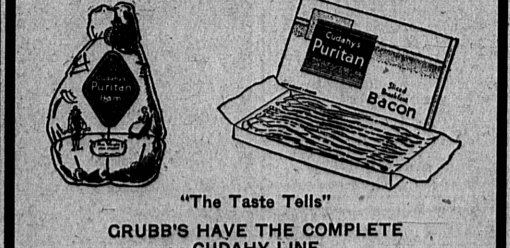
● Amazing new features make Westinghouse the refrigerator you've always wanted. Sealed-in unit never requires oiling. Dial Temperature Selector provides exactly the freezing speed desired. Revolving Shelf and Eject-o-Cube Ice Tray are just two of this year's many new features.

**5-YEAR PROTECTION PLAN**  
Standard 1-year warranty, plus 4 years' additional protection against service expense on the sealed-in unit, \$5 included in price.

PRICES FROM **\$139.50**  
Pay \$4.33 Per Month

### CUDAHY'S Quality Products

See Them Demonstrated By Nina G. Abbey at the **COOKING SCHOOL**



- GRUBB'S HAVE THE COMPLETE CUDAHY LINE**
- ♦ Puritan Hams and Bacon
  - ♦ Cudahy's Link Sausage
  - ♦ Cudahy's Sunlight Cheese, both Brick and American
  - ♦ Cudahy's Fresh Meats of Quality
- Special, Thursday, Friday and Saturday**
- CUDAHY'S White Ribbon Shortening, per lb. **15c**
- CUDAHY'S Gold Coin Bacon, 1/2-lb. pkg. **15c**
- OUDAHY'S Little Pig Sausage, 1/2-lb. pkg. **15c**

### GRUBB'S MARKET CHOICE MEATS

PHONE 779-TORRANCE  
IN SAFEWAY STORE 1929 CARSON ST.

### Torrance Electric Shop

1419 Marcellina Avenue Phone 567  
TORRANCE

# SAFEWAY STORES