

Ham Follows An Old Tradition For Easter



For some reason a great roast ham, shining with its glazed crust, and made piquant with cloves and fruits is the favored Easter meat. Whatever the origin of the tradition, the choice is a happy one, for ham, properly prepared has a flavor that is superb. And ham is an adaptable meat,

too, it may appear in many different guises, each appealing and satisfying. If you plan to serve a whole roast ham on Easter you will want to follow the method suggested here for best results.

Baked Ham
10 pound ham
4 quarts cold water
2 bay leaves
2 onion stalks
12 whole cloves

Wash the ham thoroughly and add rest of the ingredients. Cover with lid and cook slowly four hours or until ham is tender when tested with a fork. Remove ham from stock and cool until it can be handled, then remove excess fat and cut off rind. Fit ham, fat side up, in small roaster. Cover with sugar mixture.

Sugar Mixture
18 whole cloves
1 cup dark brown sugar
1 cup sliced peach juice

Stick cloves in ham, spread with sugar and add juice. Bake 20 minutes in a hot oven. Cover with lid and bake 15 minutes. Serve hot or cold. If sliced peach juice is not available use water to which 2 tablespoons of vinegar have been added.

Ham Baked in Cream
Have a slice of ham cut 1 1/2 inches thick. Leave the fat edge on the slice. Sauté the ham lightly on both sides and season by rubbing in a little brown sugar. Lay the slice in a baking dish and cover with half milk and half cream. Bake in a moderate oven for about two hours or until the ham is tender. The sauce will be quite thick when the ham is done. It may be that additional milk and cream will have to be added, but should be cooked down to the proper "sauce" consistency before serving.

Boiled Ham With Spinach
Soak ham in water overnight. Put the ham in a deep pot and cover with cold water. Heat and remove the scum which rises to the surface. Bring to a boil and reduce the heat so that it will boil very slowly. To cook properly will require about 20 minutes to each pound.

A half hour before the boiling will be finished pour off practically all the water and add half a bottle of dry white wine. The white wine diluted with the water will serve to make the sauce. Slice an onion and brown in butter, add the onion to the ham, about 1 tablespoon to 1 cup of liquid, and make a sauce with the wine in

Ham Stuffing For Bread Leaf
Follow out a loaf of bread from which the crusts have been removed after cutting a slice lengthwise from the top about 1 inch thick. Butter the loaf all over the outside and fill with the following stuffing.

Ham Stuffing
1 small onion chopped
1 tablespoon green pepper, chopped
2 tablespoons bacon drippings
1 cup canned cream of tomato soup
3 cups cooked ham chopped
1 1/2 cups soft bread crumbs
3 sprigs parsley minced
1 tablespoon prepared mustard
2 eggs beaten slightly

Brown the onion and green pepper in bacon drippings. Add creamed tomato soup and chopped cooked ham. Stir in bread crumbs and heat. Then add minced parsley, mustard, pepper and eggs. Stuff the bread loaf and adjust the cover. Bake until the loaf is a golden brown.

PROMPT ACTION NEEDED FOR SOLUTION HOUSING PROBLEM

Lack of Homes in Torrance; City Planning Engineer Brings Out the Disadvantages of Situation Serious

Owing to an engagement in San Diego, Leonard S. Smith, planning engineer, residing in Hollywood Riviera, was unable to attend the meeting held at the Chamber of Commerce last Tuesday evening. Mr. Smith is very much interested in the housing situation in Torrance and had planned to be at the meeting, but could not get back to this city in time to do so.

However, he expresses his views on the subject in a statement written for the Torrance Herald, which stresses the importance of prompt action on the part of the local citizens in overcoming the housing shortage here.

Mr. Smith, who has been connected with many important city planning projects in California and other sections of the country, says:

Acute as is our housing problem today unless steps are at once taken to solve it by building the houses we now urgently need, this problem will in the near future become a real menace to the growth of the city and the prosperity of our people.

Homes Needed
Every citizen, young and old, should be interested in the building of these new Torrance homes so long needed by this community. In the place of the past neglect and selfish indifference our housing problem should be a challenge to our intelligence and to our community loyalty.

Our industrial corporations will continue to expand in size and number only as we can find the greatly needed homes for their workmen. Already these working men have exhausted the supply of vacant houses, good and bad, found in this and in neighboring cities.

Great Problem
The adequate housing of our present and future workmen and to a large extent the proper housing of his "white collar" brother, constitutes this community's and our nation's greatest problem, because its solution will add so many other pressing civic problems.

Now that Congress has given such huge sums to the P. W. A. for housing betterment, it would seem that we lack only the understanding and the will to do. Continued indifference will emphasize the fact that our housing problem concerns something more than a shortage of homes or a surplus of slums.

Is it not a fact that many citizens appear to think and act as though class distinctions were built on natural rather than artificial grounds? Are we not through our indifference suffering less from a shortage of homes than from a shortage of civic vision?

Real Grievance
It is full time that we recognize the fact that the fierce resentment cherished toward our present society by certain of its classes often has a real and sufficient cause and the lack of a decent home life for parent and child is often the chief and adequate cause of this resentment. Should

Cemetery Superintendent
STOUGHTON, Mass. (U.P.)—At 80, Mrs. Luella D. Southworth is completing her 30th year as superintendent of the Pearl-Street Cemetery. Despite her age she personally supervises maintenance work and improvements in good weather.

Industrial Housing
In addition to the above motives which should win the loyal and unselfish efforts of every good citizen in aiding our housing efforts, the employers of labor in our industries have a more tangible self-interest in the economies of production. For it has repeatedly been shown that adequate housing of employes greatly reduces the losses of labor turnover. Adequate housing also contributes to the contentment and hence the efficiency of labor. Both of these conditions reduce in a most important degree to the cost of production.

Human Machines
If we are to extend our foreign markets or even maintain our present markets, we must not only house our industrial machinery, but even more important we must house our industrial workers, whose health, contentment and efficiency so largely depends the economies of mass production.

It is both unfair and unwise to ask a laborer to come to a Torrance industry "with his house on his back" like a turtle, and every local business man shares in the financial losses which the present dearth of houses entails.

Will Begin Work On Remodeling
Charles M. Smith, Lomita, expects to begin work on the remodeling of his building at Normandie and Lomita boulevard early next week. The change is made to accommodate the widening of Lomita boulevard which makes necessary tearing down the south portion of the building. The new store will be a great improvement on the old one, and will afford spacious accommodations for Mr. Smith's business. He expects to install new fixtures and equipment and will have one of the finest confectionery places in this section when he reopens for business.

Secret Service Score High
PHILADELPHIA (U.P.)—The U. S. Secret Service office here has had a perfect score in counter-

felt money cases during the present term of federal court. Out of a total of 17 cases, 14 defendants pleaded guilty and three others were convicted by juries.

1860—10 Days 1935—10 Hours



Lauren Upson, left, nephew of Warren Upson, early pony express rider, assumes his famous uncle's role in the celebration marking the 75th anniversary of the pony express. The celebration was held in Sacramento and more than 60 packages were dispatched to Eastern cities by Gov. Merriam and mayors of California cities. Participating in the anniversary celebration were, left to right: Upson, Ellen Hughes, United Air Lines stewardess; Arthur Dudley and Mayor Ferguson of Sacramento.

felt money cases during the present term of federal court. Out of a total of 17 cases, 14 defendants pleaded guilty and three others were convicted by juries.

Walter G. Linch offers

Two Specials This Week That Will Attract the Attention of Discriminating Buyers Because of Outstanding Value

1935 Plymouth \$795
DEMONSTRATOR
Gun-metal finish—A Beauty.
Only 4,000 Miles.

1935 Dodge \$895
DEMONSTRATOR
Used by Mr. Linch Personally.
Low Mileage.

In addition to these two specials we have an immense stock of Used Cars consisting of:

Fords, Chevrolets, Dodges, Plymouths

and many other makes in sedans, coupes and roadsters at Prices Away Below the Market

South Bay's Oldest and Largest Dealer

Walter G. Linch

312 S. Catalina Avenue
Redondo Beach, California

Open Evenings and Sundays

Buy Your Used Car From a New Car Dealer

DODGE PLYMOUTH

SAFEWAY STORES

Easter Food Sale

Why hunt for bargains when you can find them every day at your neighborhood Safeway store? Note these values; they are examples of Safeway's consistent low prices. Remember—you can save better at Safeway.

HAM SWIFT'S PREMIUM OR CUDAHY'S PURITAN WHOLE OR FULL lb. 24¢
OR HALF

Lamb Leg or Large Loin, Lb. 21c	Veal Roast Shoulder, Lb. 15c	Halibut or Salmon Sliced or Piece—lb. 19c	Beef Rib Boiling—lb. 15c
Shoulder 15c	Bacon 2 1/2 lb. 35c	Yellow Tail or Ling Cod—Piece—lb. 13c	Hens Colored Dry-Picked For Stewing, Lb. 28c
Lamb Chops Rib and Large Loin, Lb. 24c	Cudahy's Puritan of Swifts Prem. Meat prices effective at Safeway operated markets only.	SLICED TO FRY — POUND 16c	BarraCUDA In the Piece—lb. 13c

EGGS LUCERNE LARGE FRESH EXTRAS doz. 28¢
Every Egg Guaranteed

Low Prices Every Day At Safeway!

Stokely's FOOD SALE CONTINUES FOR SECOND WEEK!

Coffee Edwards—1-lb. Tin 23c	Milk Evap-erated 3 tall Cans 19c	Milk Evap-erated 3 tall Cans 20c	Other Brands 3 tall Cans 20c
LUNCH FOODS	Sliced Beef Broadcast—2 1/2 oz. Jar 10c	Deviled Meat—Libby's 3 3/4 oz. Cans 10c	Corned Beef Libby's—12 oz. Can 15c
Veal Loaf Libby's—7 oz. Can 2 for 25c	Sausage Libby's Vienna 3 4 oz. Cans 25c	C.H.B. Pickles Assorted—8 1/2 oz. Jar 10c	Sweet Pickles Or Sweet Mixed, C.H.B.—Pt. 19c
Dill Pickles Also Sour, C.H.B.—Pt. 17c	BAKED GOODS	Grandma's Cake Pecan Ring—Each 19c	Cheese Bread 16 oz. Loaf 10c
Airway Coffee PURE BRAZILIAN FRESH ROASTED lb. 17c Mild, smooth coffee. Ground to your order at store. Three pounds, 49c.	Jane Arden Bread 24 oz. Loaf 10c Jane Arden—our finest quality bread. White or wheat—sliced.	Brown Derby Beer 11-oz. Bottles 4 25c Voted equal to old time Pilsner by 11 in 12 old-timers. Plus deposit.	Pancake Flour PILLSBURY'S 40-oz. PKG. 19c Pillsbury's Best—pancakes or waffles—Try with Max-I-mum syrup.
Butter LUCERNE HIGH SCORE lb. 36c Lucerne fancy and La France choice—two quality butters, quartered.	Lucerne Milk GRADE "A" FRESH qt. 9c Country fresh, "Grade A", Pasteurized or Raw milk. Note low price.	Assorted Candies 3 Bags 25c G.F.P. CANDIES 3 Bars 10c HONEY COMB CHIPS—12 oz. 19c	FLUFF-I-EST MARSHMALLOWS 1-lb. pkg. 2 for 25c IN CELLOPHANE

Pure Cane Sugar 10 lbs. 50c
Pure cane sugar in strong cloth bags. For baking or candies.

Mayonnaise BEST FOODS qt. 45c pt. 27c
Best Foods Famous Old Medal Mayonnaise. Improves salad flavor.

Swansdown CAKE FLOUR 44-oz. Pkg. 27c
Sift and re-sifted, Swansdown assures light, fine grained cakes.

Baking Powder CALUMET 1-lb. Can 23c
Calumet's "double-action" leavening power brings success in baking.

Waldorf Toilet Tissue roll 4c
Soft absorbent tissue. Made by the Scott Paper Co. 650 sheet roll.

Ritz Crackers N. B. C. 1-lb. Pkg. 21c
Crisp, crunchy salted crackers with an appetizing flavor. Try 'em.

Torrance Laundry Prices Have NOT Advanced!

Rough Dry Service
CASH and CARRY
40 Pieces 80¢

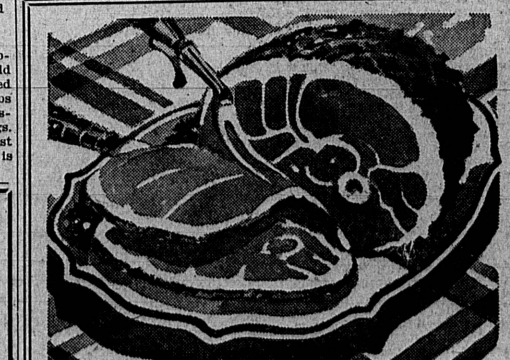
Includes ironing and mending all flat pieces, mending socks, and starching. Handkerchiefs ironed.

SHIRTS Finished and Ready to Wear 8c EXTRA

Damp Wash Service
CASH and CARRY
20% OFF
1 lb. 3¢
Minimum Charge 50c

FLAT PIECES—such as sheets, spreads, slips, table cloths, towels, napkins, etc., Beautifully Ironed

At Only 1c Extra Each
Torrance Laundry Co.
1713 Border Avenue Phone Torrance 141
TORRANCE



For Easter

Grubb's Have the Finest Hams In the Land!

Delight your entire family by serving a delicious ham . . . and we offer you the pick of the Nation's Best . . .

- * Swift's Premium
- * Armour's Star
- * Luer's Hygrade
- * Cudahy's Puritan
- * Hormel's Dairy

For tenderness and tastiness there are no better. We will also have an extra choice display of other Fine Meats, purchased especially for Easter, and you know meat prices are lower, now . . . especially at Grubb's. Drop in and see for yourself.

GRUBB'S MARKET
CHOICE MEATS
PHONE 779-TORRANCE
IN SAFEWAY STORE 1929 CARSON ST.