

Priced for Final Clearance

WOMEN'S COATS Values to \$35.00 **\$19.75**
Choice of Black or Brown Fabrics, Luxuriously Fur Trimmed Models.

WOMEN'S SUITS To Close Out **\$12.75**
Both Navy and Brown with Full Length, Double Service, Coats.

GROUP OF DRESSES ONE-HALF PRICE
In the Group are Many Beautiful Silk Dresses; Also Some Wool Dresses, Offered at Half Price To Close Out Quickly!

GROUP OF CHILDREN'S DRESSES AS LOW AS 79c
Ages 2 to 14 years. Also Children's Pleated SKIRTS, in Navy and Blue, All sharply reduced for Quick Close-Out at 79c.

Children's Jersey Dresses \$2.95 and \$3.95 Values, Ages 2 to 14, To Close Out. **\$1.95**

All Women's FELT HATS \$1.95
Values to \$4.95
Brown, Black and Navy. To Close Out.

Women's SUEDE SHOES

Values to \$3.95 Reduced to Clear **\$1.95**
◆ PUMPS
◆ TIES
◆ OXFORDS
Black or Brown. High and Low Heels. Sizes 3 to 8; AA to D



Foot and Leg Pains are warnings of foot trouble. Don't neglect them. Our Foot Comfort Expert, trained in the methods of Dr. Scholl, noted foot authority, can quickly relieve and correct the condition. See him now.

SAM LEVY 1311-1313 Sartori Torrance



New Phoenix Hosiery Colors AS WORN BY THE PHOENIX HOSEIERY TWINS

85c and \$1.00

● GAY for tweeds, CHEERIO for dark browns and wines, JAUNTY for navy and black, PERKY for bright, light colors. In Shadowless (absolutely double) Phoenix Hose with Custom-Fit Top, new all-over Tiptoe and Duo-heel with Duo-seam. Ask for "Afternoon" chignons.

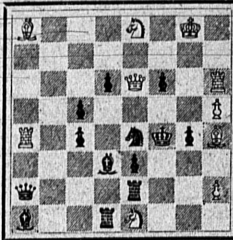
Enna Jettick SHOES FOR WOMEN
Discontinued Numbers Reduced To Clear **\$2.88**

CHESS

By A. L. PAUL

Regular meetings of the Torrance Chess Club on Monday and Thursday evening at 1316 Cabrillo avenue. Everyone is cordially welcome.

Problem No. 108
By R. Carlos
Black—13 pieces



White—10 pieces
White to play and mate in two moves.

In problems Nos. 106 and 107 an attempt was made to give individual illustrations of the half-pin theme and the valve theme. The above was culled from a recent issue of the "Xadres Brasileiro" and the solver is asked to note how cleverly the author has made a blend of the two above mentioned themes.

Solution to Problem No. 107
The key move is N-N7.

With his son, Phillip, a student at Brooklyn College, looking on admiringly, Abraham Kupchik, who has held all the most worthwhile honors to be held in the country and was the last to win the championship of the National Chess Federation, rose to the heights of his play-off of the tie with Isaac Kashdan in the annual tournament of the Manhattan Chess Club. By winning the deciding game in 29 moves, Kupchik regained the club title which has been his frequently before.

However, in this rival he had concededly one of the most finished masters on this side of the ocean. Kupchik handled his side of the game in such consummate fashion that he was pleased with the performance himself and entered it for the brilliancy prize.

The score:
Queen Gambit Declined
Kupchik (white) Kashdan (black)
1. P-Q4 N-KB3
2. P-QB3 P-K3
3. N-KB3 P-Q4
4. N-B3 P-B3
5. PXP KPXP
6. B-N5 B-K2
7. P-K3 Castles
8. B-Q3 N-K5
9. BxN BxB
10. NxB QxN
11. P-KR4 Q-K2
12. B-Q3 P-KB3
13. Q-B2 P-KN3
14. Castles QR N-Q3
15. P-B5 N-B3
16. N-K2 K-N2
17. PXP RPXP
18. N-B4 B-Q4
19. R-R3 P-KN4
20. N-R5ch NxN
21. RxN Q-B3
22. P-B4 PXP
23. PXP QXP
24. P-KN3 B-B3
25. QR-R Q-K6ch
26. K-N K-B2
27. R-R7ch K-K3
28. Q-B3 K-K3
29. Q-B5!! Resigns

Chess Modes, New and Old—3 (Conclusion)

In Frank J. Marshall's "Comprehensive Chess," we also get an interesting historical view of "the different styles of chess of the last four centuries... the step-by-step development of the various tactics now familiar to the student."

Mr. Marshall, however, is on the other side of the fence, the modern school. He states it originated with the erstwhile youthfully brilliant and reckless Wilhelm Steinitz who got conservative after winning his title and held it for 30 years by a "thrifty heaping up of small advantages while always keeping the draw in hand." Marshall even says that Capablanca's "mastery of all known tactics for a time threatened the demise of chess." Marshall, the last grand Mohican of the old school, is naturally a bit sour about the new.

The truth probably lies betwixt the Winkelman and Marshall extremes. Brilliant chess, I. e. king's-side attacks, is being enjoyable played by clever chaps in every first rate club in the country. On the other hand, the so-called "modern" players, feel that they have graduated from "simple quadratics" into a higher calculus, and that in the words of Alekhine, "the so-called irregular openings offer a variety and complexity and richness of interest no longer to be found in the regulars, the principal avenues of which have been explored."

At the end of the sixth round

INFANT CHILD DIES
Virginia Morse, age 3 months, daughter of Mr. and Mrs. Edwin K. Morse, Jr., passed away at the Children's hospital in Los Angeles last Thursday. Funeral services were held from Stone & Myers chapel, Monday, at 2 o'clock, Rev. J. B. Speed officiating. Interment was made at Wilmington.

in the international master tournament at Hastings, England, which is now in progress, the standing of contestants was as follows:
Player W. L.
Euwe 4 1/2 1 1/2
Thomas 4 1/2 1 1/2
Flohr 4 2
Lilienthal 4 2
Capablanca 3 1/2 2 1/2
Botwinnik 3 3
Michell 2 1/2 3 1/2
Barry 1 1/2 4 1/2
Miss Menchik 1 1/2 4 1/2
Norman 1 5

Two Mexicans Are Taken Into Custody

Jesus Aralia, of Huntington Beach, and Donati Amergua, of Carlsbad, were arrested in the Palos Verdes hills by Officers Elmer Straight and Allen of radio car 233, sheriff's department, on January 11, and were held in the Torrance city jail until later when they were taken to Inglewood, for arraignment in the justice court on a charge of drunkenness.

Navy Recruiting Office Is Moved

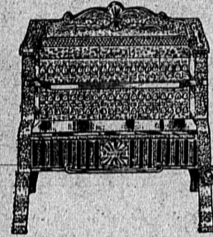
The U. S. navy recruiting station, which was formerly located at 140 East Seaside avenue, Long Beach, has been moved into new quarters in the postoffice building there. Applications for enlistment are taken daily from 9:00 a. m. till 4:00 p. m., excepting on Saturdays, when the recruiting station will be closed at 1:00 p. m.

STAR FURNITURE Clearance & TRADE-IN SALE

A double opportunity to Save! Clearance prices plus Liberal Trade-In Allowances! Let your old furniture help pay for New! — Easy Terms, Too!

Here Are But a Few of the Bargains Offered Throughout the Store

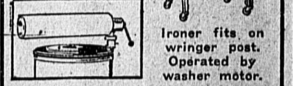
2-Piece Living Room Suite \$39.50
Brand new, good style. Covered in attractive tapestry. Loose reversible cushions. Spring edge construction. Davenport and chair. Pay \$3 Month



All Gas Heaters 10% OFF
We overbought and must reduce our stock. Latest type heaters, best products of leading manufacturers. Lots of cold days ahead, BUY NOW and enjoy real comfort with low fuel cost.

Superior Washer
Has Full Capacity Porcelain Tub

ONLY **\$39.50**
Easy Terms With Ironer Combination **\$59.50**



EXTRA LIBERAL TRADE-IN ALLOWANCE
Given During Sale On Your Present Radio

\$22.90 BUYS



We Also Sell

- * Zenith
- * Atwater Kent
- * Arunow
- * General Electric
- * Tiffany Tone
- * Majestic Radios

See the Other New 1935 Philcos!

New Radio Prices Start at \$12.95
Easy Terms

LINOLEUM, Felt base, 6 ft. wide. Fine assortment of patterns. Per running foot. **23c**

RE-BUILT ELECTRIC VACUUM CLEANERS, Many models, some with attachments. Priced to clear as low as **\$8.50**

MERCURY RUGS, Patterns suitable for living rooms and bedrooms; size 9x12. **\$14.75**

HEAVY AXMINSTER RUGS, Perfects. Regular \$29.50. Size 9x12. Reduced to clear. **\$21.95**



Air-Cooled ELECTROLUX THE SERVICE GAS REFRIGERATOR **10% DISCOUNT** On All Floor Models **\$10.00 DOWN** Delivers One to You!

A STORE FULL OF USED FURNITURE AT DRASTICALLY REDUCED PRICES

Star Furniture Co.

1273 Sartori Avenue Torrance Phone 620 "WE CHALLENGE CITY PRICES"

Torrance National Bank

TORRANCE, CALIFORNIA

Condensed Statement of Condition At Close of Business December 31, 1934

RESOURCES	
Cash and Due from Other Banks.....	\$167,244.46
U. S. Government Bonds.....	\$110,177.51
Federal Land Bank Bonds.....	37,092.50
Stock in Federal Reserve Bank.....	3,600.00
Municipal Bonds.....	31,000.32
Public Utility Bonds.....	5,364.38
TOTAL.....	187,234.71
TOTAL QUICK ASSETS.....	
Loans and Discounts.....	\$354,479.17
Bank Building, Safe Deposit Vaults, Furniture, Fixtures	69,527.31
Deposit with Federal Insurance Corporation.....	36,500.00
Redemption Fund with U. S. Treasurer.....	470.93
Other Assets.....	2,500.00
TOTAL RESOURCES.....	\$463,521.46
LIABILITIES	
Capital Stock—Common.....	\$ 50,000.00
Preferred.....	50,000.00
Surplus and Undivided Profits.....	\$100,000.00
20,329.78	
Circulation.....	50,000.00
Deposits.....	292,986.60
Other Liabilities.....	205.13
TOTAL LIABILITIES.....	\$463,521.46

MEMBER
Federal Reserve Bank

MEMBER
Federal Deposit Insurance Corporation

Are you putting up with an OBSOLETE STOVE?

Modern gas ranges can be purchased on very easy terms...OR with funds obtainable under the National Housing Act.

CHECK YOUR PRESENT STOVE AGAINST THIS LIST

- TEMPERATURE CONTROL
- AUTOMATIC LIGHTING
- EFFECTIVE INSULATION
- FULL ENAMEL FINISH
- NON-TIPPABLE SHELVES
- UTILITY DRAWER SPACE
- NON-CLOG BURNERS
- CLOCK CONTROL
- BALANCED DOORS
- GLIDING BROILER
- TABLE TOP

SEE YOUR DEALER OR GAS COMPANY for trade-in value on your old stove.



inexpensive with **Natural Gas** — lowest in cost of all practical fuels

SOUTHERN CALIFORNIA GAS COMPANY
[CONNECTED WITH THE PACIFIC LIGHTING SYSTEM FOR DEPENDABLE SERVICE]

Seven Counties Farm Bureau Meet Tomorrow

The seven southern counties farm bureau poultry department of the California Farm Bureau Federation will meet Friday, January 18, at 9:30 a. m., Civic auditorium, Pasadena. This meeting is of vital interest to producers, hatcherymen and breeders, according to R. B. Peters, chairman of this organization.

The program includes discussion of legislation affecting the poultry industry of the seven southern counties. A matter of vital interest to breeders and hatcherymen will be "A discussion of the state standard breeding plan. Those taking part in the discussion will be: Dr. Lewis W. Taylor, head of the poultry department, University of California; John E. Kimber, James Dryden, George England and M. F. Donahue. Other problems to be discussed will be "Feeding" by Dr. Taylor and Dr. Almqvist; "Battery Feeding" by J. B. Claypool; "Building Egg Quality" by Dr. Almqvist; "Mineral Feeding" by Fred W. Johnson. During the evening program, the discussion will include "Housing and Ventilation Problems" by W. E. Newlon, extension specialist, University of California, and "Common Poultry Colds" by Dr. W. H. Graybill, in charge of the state poultry laboratories.

Earn 4%

4% ON YOUR SAVINGS

Member Federal Home Loan Bank
Torrance Mutual Building and Loan Association
Sartori at El Prado