

Lomita Boy Is Struck By Car Badly Injured

Clyde Henderson, Jr., Said to Have Ridden Bike Into Path of Machine

Clyde Henderson, Jr., 15-year-old son of Mr. and Mrs. Clyde Henderson, residing at 25838 Cypress street, Lomita, was struck by a car at the intersection of Miller and Cypress, Friday night, and is now in a serious condition from his injuries at the General Memorial hospital in Torrance. Henderson received a basal skull fracture, numerous cuts and bruises and possible internal injuries.

The boy was riding a bicycle, and is said to have ridden out of Miller street into the path of the car, occupied by Mr. and Mrs. Arthur Case, Sepulveda boulevard, Torrance. Henderson was taken to the Jared Sidney Torrance Memorial hospital for first aid and from there to the Los Angeles Memorial hospital, where he is still in a serious condition, while his condition, while slightly improved, is still precarious. A year ago young Henderson was a patient at a hospital where he had a grain of corn removed from his lung.

Palos Verdes Homes Association Urges More Highway Aid

Request that the board of supervisors prepare an application for the SEIRA to construct the second "barrel" of Granvia La Costa, from Via Buena to beyond Flat Rock point, was laid before the county officials today by the Palos Verdes Homes Association. The request was directed to Supervisor John R. Quinn.

The association also asked that the name of "Palos Verdes drive" be applied to a complete circuit of the Palos Verdes Peninsula, along highways now existing or paved. This would provide a marvelous marine view during virtually all of a 22-mile drive, similar to that on the Atlantic coast, it was pointed out.

HOSPITAL NOTES

John Chandler, 226 South Francisco, Redondo Beach, underwent an operation, December 25.

W. A. Stott, 1617 Arlington, entered December 23 for treatment to his foot injured some time ago.

El Nido Dist. May Get New Sewer System

Board Authorizes Survey to Be Made for Sanitary Service

Authorization to make surveys for the installation of a sanitary sewer system and replacing of water supply pipes in El Nido, south of Lawndale, was given by the county surveyor this week by the board of supervisors, in response to a petition from several hundred property owners.

Alfred Jones, county surveyor, reported that the petition had been checked and found to contain signatures of 56 per cent of the property owners.

Jones, at his own request, also was authorized to prepare plans and specifications for the sewer system and replacement of the water pipes, preparatory to being submitted to the Los Angeles county relief administration for an allocation of labor and necessary materials.

The area now is served by the Belvedere Mutual Water Company, according to the communication to the supervisors, and the pipes that were laid in 1903 are virtually deteriorated.

The large number of cesspools in the community are declared to be a menace to the health of the residents, coupled with the leaky water pipe lines.

Walteria Girl Is Bitten By Dog

Norma Bingham, residing in Walteria, was bitten by a small dog said to belong to T. A. Brown, of Park street, yesterday. The wound on the child's ankle was cauterized by Dr. F. H. Racer. Later in the day, Mrs. L. Dischner, 2106 247th street, reported to Constable Charles R. Taber's office that a dog suspected of rabies was running at large in the neighborhood of her home. The matter was relayed to Sub-station No. 3 of the sheriff's department for action.

Fall Kills Veteran Diver

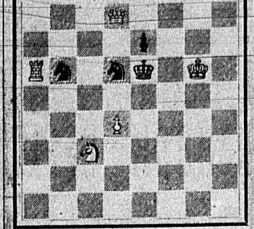
CLEVELAND (I.P.)—Martin J. McNeil, veteran Great Lakes diver, who had risked his life frequently in building and maintaining breakwalls, was killed accidentally in a fall here, Ill., a week, he tumbled from his third floor hotel window apparently after suffering a dizzy spell.

CHESS

By A. L. PAUL

News items of chess activities, queries, problems and games are solicited for publication in this column. Address communications to A. L. Paul, Box 736, Torrance.

Problem No. 108
Black—4 pieces



White—5 pieces
White to play and mate in two moves.

This week's problem is a much quoted example of the half-pin theme, by a well known Canadian composer, and should prove interesting to our readers if they will stop and analyze this make up. To the novice it might be mentioned that the theme consists of two black men stationed between the black king and a white man in such a manner that when one of the black men moves, the other is pinned and allows white to mate. In the above diagram we find two half-pins, each piece in turn pinning the other, and the problem is termed a mutual half-pin.

Solution to Problem No. 105
White's black moves his RP on to glory white moves as follows:
1. N-N1, 2. K-R3, 3. K-R4, 4. P-R3!!!

This game, from the Middlesex, Kent, England, match is probably the shortest on record for match play:

Dutch Defense
Joyes (white) Argrave (black)
1. P-Q4 P-KB4
2. P-QB4 P-KR3
3. P-K3 P-QN3
4. Q-R5ch P-N3
5. QXP mate

Soon after his arrival in Mexico City, Reuben Fine, the young American master, gave an exhibition of simultaneous play at the Mexico City Club, recognized as the foremost chess organization in the country. He met with strong opposition and of the 33 games played he won 24, drew four and lost five. It will be recalled that Mr. Alekhine, the world's champion, playing against 40 players at the same club, also drew four and lost five games. Fine expects to give ten performances in all.

Following is the score of a game won by Fine in his exhibition:

Sicilian Defense
Fine (white) Brunner (black)
1. P-K4 P-QB4
2. N-KB3 P-K3
3. P-Q4 P-R2
4. NXP N-KB3
5. N-QB3 B-N5
6. B-Q3 P-K4
7. N-K2 P-Q1
8. PXP NXP
9. Castles BxN
10. PxB Castles
11. B-R3 R-K
12. B-N N-QB3
13. Q-Q2 Q-P4
14. B-Q6 N-Q5
15. NKN PxN
16. Q-N5 P-KR3
17. Q-R5 Q-Q
18. QXN R-K3
19. KR-K Resigns

Chess Modes, New and Old—1.
(In three parts)

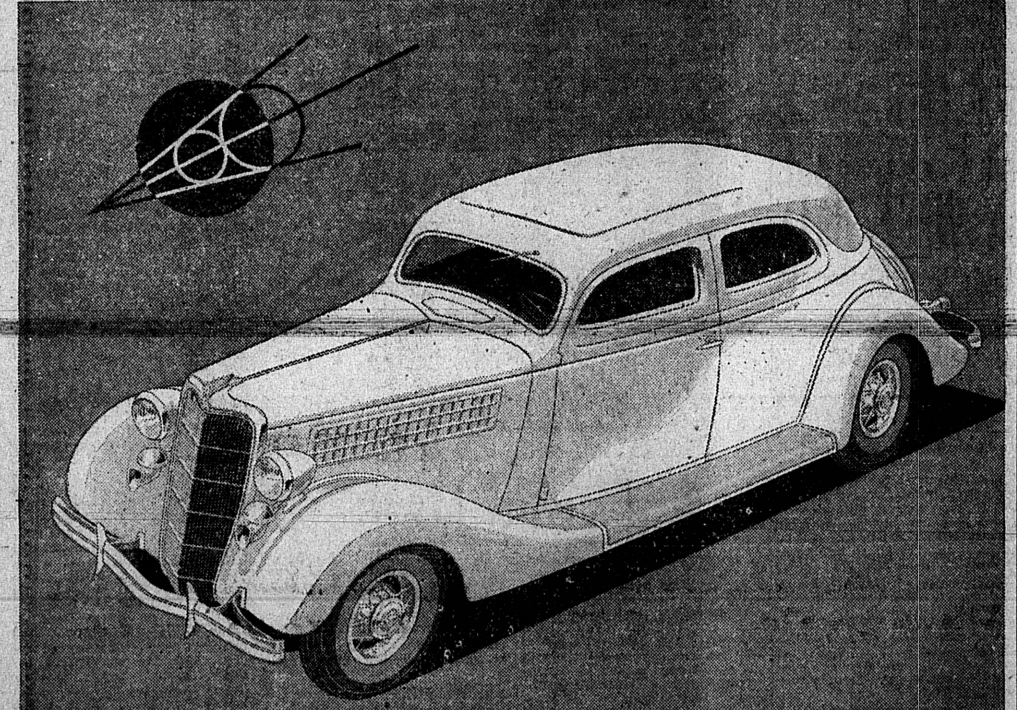
One of the striking differences twixt antique and modern play is the differing emphasis on Space and Time.

Chess betrays literally the extinction of the opposing monarch, it was the aim of the old school to gain, even at the expense of material force and of general Space equality, the files, diagonals, Pawn and Knight-rooks leading up to the taking of the royal citadel.

Time was the essence of the contract. One cluttered up one's opponent with amazing gifts and even abandoned most of the field altogether in order to concentrate overwhelmingly at KB7.

Barnie F. Winkelman, in his book, "Modern Chess," points out that with increased knowledge and better technique the art of successful defense has been strengthened. Briefly and vulgarly, nearly all the violent gambits got "busted"; those remaining difficult, can be evaded. A new emphasis came to be placed on Space and on elasticity of movement.

"Says Mr. Winkelman: 'Modern chess masters, particularly in the opening and mid-games, seek to command as much of the board as possible, feeling confident that in the ensuing complications the side that governs most of the squares with its pieces or pawns will emerge victorious. Moves which commit the position or dictate the future lines should be avoided when possible. The term "elasticity" has been used to designate a free choice of moves and variations, and is an important principle of modern opening play.'



THE NEW FORD V-8 FOR 1935

The New Ford V-8 for 1935 is the biggest and roomiest Ford car ever built. It is a strikingly handsome car, with modern lines and new, luxurious appointments.

But most important of all it is especially designed to give you smooth, easy riding over all kinds of roads—"a front-seat ride for back-seat riders."

This ease of riding is achieved by the use of three basic principles never before combined in a low-price car.

1. Correct distribution of car weight by moving engine and body forward eight and a half inches.

2. New location of seats by which the rear seat is moved forward, toward the center of the car—away from the rear axle and away from the bumps.

3. New spring suspension which permits the use of longer, more flexible springs and increases the springbase to 123 inches.

The result is Center-Poise—which not only gives you a new riding comfort but adds to the stability of the car and its

NOW ON DISPLAY

A New Ford V-8 That Brings New Beauty, New Safety, and a New Kind of Riding Comfort Within Reach of Millions of People

ease of handling. You can take curves with greater safety.

There are many new features in the Ford V-8 for 1935 which make the car still easier to drive. New brakes give more power for stopping quickly with far less foot pressure on the pedal.

A new type of easy-pressure clutch employs centrifugal force to increase efficiency at higher speeds. New steering mechanism makes the car still easier to handle. New, wider, roomier seats.

The New Ford V-8 for 1935 retains the V-8 engine which has demonstrated its dependability and economy in the service of more than a million owners. There are refinements, but no change in

basic design. You buy premium performance when you buy this Ford V-8—full 85 horsepower and capable of 80 miles an hour. All Ford V-8 cars for 1935 come equipped with Safety Glass throughout at no additional cost.

We invite you to see this New Ford V-8 for 1935 at the showrooms of Ford dealers. You will want to ride in it—to drive it yourself. You will find it a new experience in motoring.

FORD V-8 PRICES ARE LOW

12 BODY TYPES—Coupe (5 windows), \$485; Tudor Sedan, \$510; Fordor Sedan, \$575; DE LUXE—Roadster (with rumble seat), \$550; Coupe (3 windows), \$570; Coupe (5 windows), \$560; Phaeton, \$580; Tudor Sedan, \$575; Cabriolet (with rumble seat), \$625; Fordor Sedan, \$635; TOURING SEDANS, with built-in trunk—Tudor Touring Sedan, \$595; Fordor Touring Sedan, \$655.

(F. O. B. Detroit. Standard accessory group including bumpers and spare tire extra. All body types have Safety Glass throughout, at no additional cost. Small down payment. Convenient, economical terms through the Universal Credit Company.)

NEW 1935 FORD V-8 TRUCKS AND COMMERCIAL CARS ARE NOW ON DISPLAY

See the New Ford V-8s for 1935

Now on Display at

Schultz & Peckham

AUTHORIZED DEALERS OF FORD PRODUCTS
In Torrance 14 Years

1514 Cabrillo Ave. Torrance Phone 137

OPEN EVENINGS

Novel Ski Meet to Be Berkeley Event On Sunday

With more than 70 of the West's finest "sky riders" participating, a novel ski tournament will be staged in Berkeley, Sunday, January 6, under the auspices of the Auburn Ski Club.

Snow for the unique event will be hauled from the high Sierras by the Southern Pacific Company. A tonload of snow—more than 11,000 cubic feet—will be required to cover the take-off and "down hill" of the ski jump site.

Held for the purpose of stimulating interest in California's winter sports, the tournament is attracting many nationally known skijumpers. Chief among these will be Roy Mikkelsen, former national ski champion and present California state champion; Sigvard Veststad, former California state champion; Halvor Mikkelsen, all-around ski champion of California, and others of national note.

New Season of Midget Car Races Starts At Motospeedway Sunday

Midget auto race fans will welcome a new year of competition next Sunday afternoon at Motospeedway on Long Beach boulevard. Bill Betteridge, 1934 champion, is to receive the title award, but a "hot time" is in store for the speed monarchs with Bob Swanson, Curly Mills, Art Scovell, Mel Keady and other

aces ready to face the starter's flag in the 30-lap feature and other races on the schedule.

Following Sunday's program Betteridge is to make a decision as to whether or not he will accept offers of Chicago promoters who have tendered him a \$3000 contract for a series of appearances in the Middle West. The midget game, staged on the coast, has spread to eastern centers and services of the leading lights of the "phenom" sport on the coast are being sought.

Swanson is the "man to beat" in the speedfest Sunday. The Los Angeles pilot, fearless chauffeur of a "mighty midget" which carries virtual dynamite under the hood of a condensed motor, has won everything available in prize money for the past two months, including the Grand Prix which was held at the Gilmore Stadium.

At Gordon, winner of the 250-mph Ascot race last Sunday, and Kelly-Petillo, victor in the Airport road classic, are to officiate.

Mix Relative Dead SANDUSKY, O. (U.P.)—Henry Mix, 62, relative of Tom Mix, western movie star, is dead.

COURTEOUS SERVICE • MODERN STORES

The World's Leading Retail Food Merchants

BIG FOOD VALUES!

..... IT'S AN OLD A&P CUSTOM and one you can depend upon throughout 1935—Save on your needs at A&P LOW PRICES!

FINE GRANULATED Sugar 10 pound cloth bag 48¢ <small>C. & H. PURE CANE—10-LB. CLOTH BAG 49¢</small>	CLOVERBLOOM BUTTER 1 lb. 35¢ <small>CHALLENGER & 36¢</small>
DEL MONTE BARTLETT Pears No. 2 1/2 Can 17¢	CAMMELL'S TOMATO SOUP 3 can 20¢
DEL MONTE—SOLID PACK Tomatoes No. 2 1/2 Can 13 1/2¢	MONSIEUR LAIGE EGGS doz. 31¢
GOLD MEDAL Bisquick 40-ounce Package 28¢	DEL MONTE HALVES OR PEACHES 12¢ <small>16-oz. Can</small>
HAMILTON'S Sauerkraut 3 No. 2 1/2 Cans 25¢	NUTLIG MARGARINE 1 lb 12 1/2¢
SIERRA CALIFORNIA WINES quart bottle 49¢ <small>PORT MUSCATEL ANGELICA</small>	BILLSBY'S PANCAKE FLOUR 19¢ <small>Low Price</small>
FRESH FRUITS AND VEGETABLES	HOBBS' CHICKEN BROTH 14 1/2¢ <small>1-Can</small>
ORANGES LARGE, RIPE NAVELS doz. 15¢	EIGHT O'CLOCK 19¢ <small>3-pound bag 55¢</small>
APPLS 5 lbs. 25¢	HILLBROS COFFEE RED CAN 1 lb 31¢
POTATOES 10 lbs. 17¢	White Ing. P&G Naphtha SOAP or Crystal White 5 for 14¢
CARROTS 4 bunches 5¢	CALIFORNIA HOME TOMATO JUICE 15-oz. 7 1/2¢
AVOCADOS each 5¢	CLICOT CLUB GINGER ALE 16-oz. half 10¢
CAULIFLOWER 3¢	A-PLU HEALTH SOAP 3 1/2 lbs 14¢
RADISHES 4 bunches 5¢	RIBBON MACHES 2 1/2 lbs 9¢
SKINNED HAMS SWIFT'S PREMIUM "OVENIZED" Whole or Full lb. 20 1/2¢	ORANGE PEEL O-UOWN TEA 1/2 lb. 25¢
PORK LOIN ROAST EASTERN GRAINED lb. 19¢	SIUTERNE or BRUNDY fifth 39¢
FRESH Ground Beef lb. 10¢	
"OUR OWN MAKE" Pork Sausage PURE 100% 1 lb. 19¢	
SWIFT'S PREMIUM FANCY EASTERN Sliced Bacon 1/2 lb. pkg. 15¢	
ARMOUR'S WHITE CLOUD Shortening 1-lb. carton 10¢	
Eastern Grain-Fed "Stuffed" Beef Pot Roast lb. 10¢	
Eastern Grain-Fed "Baked" Beef Prime Rib Roast lb. 19¢	
CUDAHY'S PURE FRESH BAKED Link Sausage 1/2 lb. pkg. 12 1/2¢	
FRESH EASTERN EXTRA-LARGE Oysters doz. 25¢	
HENS FANCY FRESH DRESSED FOR STEWING or FRICASSEE lb. 19¢	
LAMB SHOULDER ROAST lb. 15¢ <small>Cerulina Springs, Calif.</small>	
PRICES EFFECTIVE THURSDAY, FRIDAY AND SATURDAY, JANUARY 3, 4, 5, 1935	

A&P FOOD STORES

1319 SARTORI AVENUE, TORRANCE

Read Our Want Ads!