

# Thrifty GIFTS

Only 9 Shopping Days 'til Christmas

# SAM LEVY

1311-1313 Sartori Ave., Torrance

# SMART GIFTS

## Gifts For Women and Girls

**Phoenix Hosiery**  
Twins say  
"PHOENIX SHADOWLESS  
HOSIERY FOR THE  
WELL-DRESSED LEG"

**85c**  
and \$1.00

● Jean and Jill, the Phoenix Hosiery Twins, always wear this genuine ringless hosiery. It has Phoenix' Custom-Fit Top, new all-over Tipt-toe and Duo-heel for long wear. "Everyday" chignons in the new colors; also service sheers.

CAPER CHEERO BRISK PERKY GALA GAY

## Luxurious Lingerie

Rich Satins and Pure Silk Crepe-de-chine, trimmed with lovely laces.

- ◆ Dance Sets
- ◆ Silk Nightgowns
- ◆ Silk Pajamas
- ◆ Panties
- ◆ Slips, etc.

**\$1.95**  
**\$2.95**

## Gift Handkerchiefs

3-in-at-box **35c to \$1.00** Box

Also individual Handkerchiefs of all pure linen, hand embroidered. White and colors, 25c each.

## Bags - Purses

For Evening or Street Use! Genuine leathers in all popular colors. Nicely lined and fitted with "all the trimmings."

Specially Priced **\$1.95**

## Sweaters

For Women, Misses and Children! All colors in both Slip-over and Coat styles. Smart new assortment for Christmas.

**\$1.29 to \$4.95**

## BRAND NEW

Just Arrived by Fast Express!

## Tree-Bark

(All Leather)

## Women's Footwear!

4-EYELET TIES (With High Heels) and OXFORDS (With Medium Heels)

**\$3.95** All Sizes

The very newest and smartest creation in women's footwear. You must see them to appreciate their extreme chic.

### NEW APPAREL

For the Holidays Here Are Gifts "She" Always Appreciates

- ◆ DRESSES for All Occasions **\$7.95** Up
- ◆ COATS, Sport Styles or Fur Trimmed for "Dress-up." **\$16.50** Up
- ◆ SUITS—Two-piece Suits with Full Length Coats. Grey, Navy and Brown **\$14.75** to **\$16.50**

## Gifts For Men and Boys

Yes, WE Have Them—

### Boys' Zipper Suits

Long Pants and Zipper Jackets - Grey, Brown, Blue, Checks - Ages 2 to 10.

**\$4.95** Suit

YOUNG MEN'S SIZES, 8 to 18  
Jackets, \$3.95 Trousers, \$3.95

### BOYS' Sheep-Lined Coats

With Heavy Wool Collars

**\$3.95**

### Men's Leather Jackets

Suede or Smooth Leathers. All Shades. A mighty fine gift!

**\$5.95**

### Men's Brushed Wool Wool Sweaters

Zipper Coat Styles. All Colors

**\$3.95**

### Reversible Ties

The latest in Neckties for Men. Wear either side out—get double service. Smart, new patterns in heavy silks.

(In Gift Box) **\$1**

Other Neckties, 50c

### Please the Children With Something to Wear!

- We Suggest:
- ◆ Dresses
  - ◆ Coats
  - ◆ Zipper Suits
  - ◆ Sweaters
  - ◆ Shoes
  - ◆ Phoenix Sox

# Torrance Furniture Co.

Owned and Operated by Sam Levy  
1334 El Prado Next to Torrance Herald Phone 37-W  
CONVENIENT TERMS

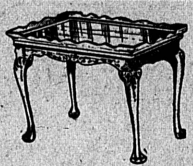
## The New "Pin-It-Up" Indirect Unit and Handy Lamps

A smart, efficient unit for indirect lighting. A handsome fixture as easy to hang up or take down as a picture—definitely portable. Moted to the moment. At home in any living room. Can be hung up or taken down in a second—welcome in any home where shadowless, glareless light is wanted. Especially desirable for playing bridge or other card games as it gives a clear, cheerful, soft, restful light with no glare or sharp shadows.

It hangs on the wall—anywhere. There is no cord on the floor to tangle up feet—to upset chairs and tables and cause accidents.

A Beautiful Useful Gift

**\$1.35 to \$4.95**



Splendid Assortment

Coffee Tables

End Tables

End Tables with Magazine Racks Radio Tables

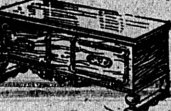
**\$1.29 and up**

### Tile Top Coffee Tables

**\$1.69 to \$6.45**

### For Sister

Fine Assortment of New and Modern Walnut Veneer



Cedar Chests

Medium Sizes

**\$15.95 to \$19.95**

Larger Sizes, \$20.95 to \$24.95

### For Mother

### A Sewing Stand . . .

Opens out. Has sliding tray. Light weight, portable. A useful gift that will last for years.

**\$4.95**

**HOT POINT . . . Waffle Irons . . Percolators . . Coffee Makers**  
By General Electric **Toasters . . Irons . . Clocks . . Etc.**

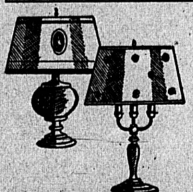
## Bridge Lamps

SPECIAL!

Complete With Beautiful Laced Parchment Shades

**\$1.35 to \$2.49 and up**

## Parchment Lamp Shades . . . . 18c to 99c



Large Assortment of Attractive

Table Lamps

**\$1.95 up**

Floor Lamps

**\$3.75 up**

## Boudoir Lamps and Bed Sets

SINGLE . . . . . \$1.00 and up

PAIRS . . . . . \$2.25 and up

SETS OF THREE . . . . . \$1.95 and up

Lovely Satin Shades In Assorted Colors

## Gifts For the Children

### Dolls and Doll Buggies

### Desks

### Tricycles

### Scoters . . . Wagons

Etc.

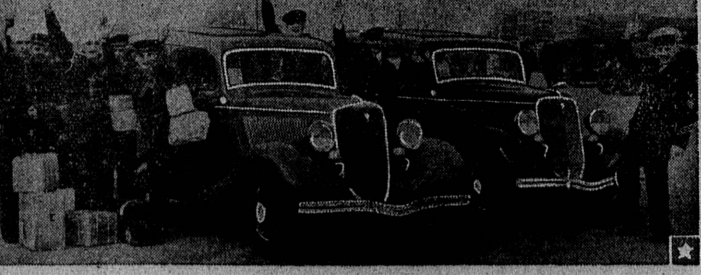
New Stock! New Styles! Just What They Want!

### For Dad

### Club Chair and Ottoman - \$26.95

Luxurious! Soft Pillow Back Spring Construction Insures Long Wear

## Ford Dealers Assist As Navy Lands At Long Beach



Top left, Gov. Frank F. Merriam and Admiral Joseph Mason Reeves, commander-in-chief of the United States fleet; right, flagship of Admiral Frank H. Bumbo, commander of the battle force. Lower picture shows "bluejackets" and chief petty officers with two of the sixty Ford V-8 sedans provided for their convenience at the Navy landing by Long Beach Ford dealers.

When the bulk of the United States Navy dropped anchor in their home ports recently the five Ford dealers at Long Beach had sixty Ford V-8 sedans at the Navy Pier to meet them.

And were the boys delighted! It proved to be one of the most practical of the many expressions of welcome to the men of the fleet on their homecoming after a long voyage in two oceans.

In addition to these Ford V-8s the Lincoln dealers provided transportation for the official welcoming party and Admiral Reeves' staff.

## New Wedgewood Ranges Now At Star Furniture

Best Steel From Columbia Mills Used In Manufacture of Stoves

The finest grade of steel made at the Columbia steel mills in Torrance are used in the manufacture of Wedgewood's gas ranges, which have just been added to the extensive line of other ranges sold by the Star Furniture Company, 1273 Sartori Avenue.

"We are particularly pleased to announce the agency for Wedgewood's ranges," said H. M. Abramson, manager of the Star Furniture Company's Torrance store, "because in a way we are helping one of our important local industries. The men at the Columbia mill know the high quality of steel that is used in the manufacture of Wedgewood's ranges, and we can assure them that other products which go to make up this splendid line of gas ranges is of equally high quality."

Other gas ranges and heaters sold by the Star Furniture Company include: O'Keefe & Merritt, Gaffers & Sattler and Magic Chef.

## Bank of America Quarterly Dividend

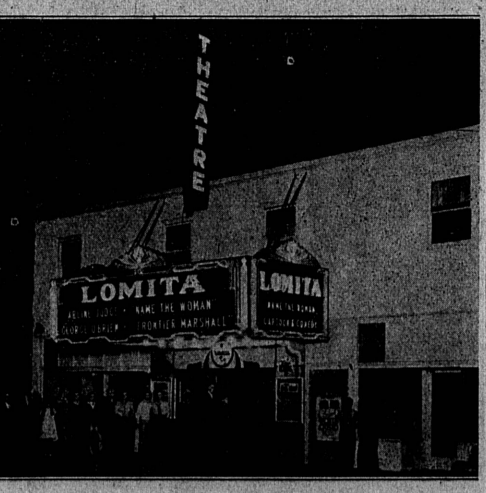
Directors yesterday declared regular quarterly dividend of 50 cents a share on the 2,000,000 outstanding shares of capital stock of Bank of America N. T. & S. A., and 15¢ cents a share on the 168,000 shares of capital stock now outstanding of Bank of America, California, the associated state bank.

The current quarterly disbursement, which will be paid January 1 to stock of record December 20, aggregates \$1,026,250, bringing the total dividends for 1934 to date to \$3,851,250. More than 99% per cent of this amount is paid to Transamerica Corporation.

The current dividend of Bank of America N. T. & S. A. is the same amount that has been paid quarterly since June, when directors increased the disbursement from \$750,000 a quarter.

Call 444 for Ad Service

## Handsome New Marquee Installed Recently At the Lomita Theatre; General Admission Now 15 Cents



### Attractive Theatre Front

Manager Louis Levison, of the Lomita Theatre, is not a superstitious soul, but he does believe in signs, and makes it thoroughly apparent to the public that his theatre is one of the brightest spots in this section. With the addition of a brilliantly lighted marquee, installed recently at a cost of \$1800, and a flashing neon sign, the Lomita Theatre attracts plenty of attention and excites the most favorable comment.

"When later and better facilities for the pleasure and comfort of patrons are advisable, the Lomita Theatre will offer them," says Mr. Levison, who is ever on the alert to put into effect the up-to-the-minute ideas in show business.

That his efforts to please are not wasted is shown by the steady increase in patronage at the Lomita under his management.

It saves steps to read the ads and make up your shopping list in the privacy of your own home. Bargains galore without moving from your chair.

## Full Program Of Winter Sports Outlined For Mountain Resorts

Superintendent James K. Reid, of the Los Angeles County Department of Recreation Camps and Playgrounds, announces the completion of the program of fixed events for the winter season at Big Pines, with the formal opening set for Friday, December 29. On that date the new ice rink will be dedicated with appropriate sports, and a snow frolic inaugurated that will continue up to and including Tuesday, January 1. Programs will be arranged for the various days to include skiing and skating.

On January 5 and 6 exhibitions of speed and figure skating will be given by members of various clubs in the county, and exhibitions of ski jumping will be given by experts. Ski tours will also be a feature of this two-day carnival. Lancaster American Legion Snow Day will be celebrated January 12-13, with appropriate sports.

The Old Baldy Annual Ski Tour will be conducted January 19 and 20, under the auspices of the Big Pines Ski Club. Competent guides will be in attendance, and all skiers are invited to participate.

On January 26 and 27 the Ninth Annual Winter Sports Carnival of the Los Angeles Junior Chamber of Commerce will be held. The feature of this will be the tournament of the National Amateur Ski Association. Competitive ski jumping in all classes, cross-country races, combined events, competitive skating events, inter-collegiate competitions, ice hockey and snow shoe races will be decided.

February 2 and 3 have been set as dates for exhibition skating and skating events, ski tours, tobogganing and sledding.

The Third Annual Big Pines Snow Pageant will be held February 9 and 10. Among the events will be competitions in skiing, all classes, exhibition ski jumping, cross country races, speed and figure skating events, ice hockey, and concluding with an ice carnival.

The churches, Boy and Girl Scouts, clubs and other organizations will unite in a carnival to be held February 16 and 17.

On February 22 to 24 inclusive, the final tournament of the Big Pines Ski Club will be held. Exhibitions of ski jumping will precede the competitive events during which some sensational results are anticipated. Cross country ski and snow shoe races, skating competitions, figure skat-

ing exhibitions and indulgence in all snow sports should make this tournament highly successful and prove a fitting climax to the season.

Winter sports will continue informally at Big Pines as long as conditions permit. The slopes of Mt. San Antonio (Old Baldy) give the skier an opportunity for tours as late as the latter part of April, when spring skiing is usually at its best.

### Basketball Attracts Stars

SALT LAKE CITY, Utah (U.P.)—Headed by Bill Kinner, captain and All-Conference center in the Rocky Mountain Conference last year, one of the largest squads in history turned out for initial basketball practice at Utah University. The squad is bolstered by a number of lettermen. First Conference game is with Brigham Young University at Provo, Utah, Jan. 11.



## GET THE HABIT

OF READING THE CLASSIFIED ADS EACH WEEK

You'll be surprised at the "Buys" you can make. For SURE-FIRE RESULTS Use Them Yourself

Phone 444  
For An Experienced Ad Writer

### O. E. S. MEETING CHRISTMAS PARTY

Star members are asked to have their children at the Masonic temple this evening at 8:45 o'clock for the Christmas party, which has been especially prepared for the children.

The regular chapter meeting will begin promptly at 7:30 p. m.

### FERA Fights Malaria

ESPAÑOLA, N. M. (U.P.)—One hundred men are working digging ditches in a FERA malaria control project near here. The ditches will drain areas believed responsible for malaria.

### Walnut Park Bank Pays 3rd Dividend

Dividends to the amount of 4 1/4 percent of the amount owing to depositors have or will be paid to the patrons of the Walnut Park National Bank, within a short time. The third dividend of seven percent was recently declared, and a large portion of the money available for this purpose has been called for. The bank has been operating under a receivership.

### Special Licenses for Vets

AUGUSTA, Me. (U.P.)—Those who are Yankee Division members will be given special 1935 automobile registration plates. They were issued at the request of Y. D. officials.

To Ballyhoo Idaho Potatoes  
POCATELLO, Idaho (U.P.)—Plans to make the Idaho potato, already famous, even better known throughout the nation are being made by the Idaho Potato Dealers' Association. First steps in the \$100,000 fund to be expended in national advertising.