

**A&P**  
ESTABLISHED 1859  
WHERE ECONOMY RULES

# BRANDED BEEF

SELECTED BY A&P... GUARANTEED  
BY PACKERS' STAMP OF APPROVAL

FANCY EASTERN GRAIN-FED BEEF  
**POT ROAST, SHOULDER** lb. **9c**  
Center Cut Chuck lb. 12½c  
Prime Rib or Rump lb. 19c

GENUINE 1934 BABY MILK SPRING  
**LAMB LEGS** BOSTON STYLE lb. **17½c**

**FRESH GROUND BEEF** lb. **9c**  
**BOILING BEEF** PLATE RIB lb. **5c**  
**JACK CHEESE** FULL CREAM lb. **19c**  
**LAMB CHOPS** SMALL LOIN lb. **29c**  
SMALL RIB—lb. 19c  
**BEEF LIVER** FRESH SLICED lb. **15c**  
**HAMS** SWIFT'S PREMIUM Whole or Full Half lb. **23½c**  
CUAHDY'S PURITAN

**BACON SLICED** ½ lb. **14½c**  
SUNNYFIELD FANCY EASTERN pkg.

WILSON'S EASTERN SUGAR-CURED  
**SMOKED PICNICS** lb. **15c**

FRESH FRUITS AND VEGETABLES

## BELL PEPPERS FANCY

 each **1c**

## CANTALOUPE

 HALE'S BEST **3 for 10c**

FIRM RIPE YELLOW  
**Bananas** 4 lbs. **15c**

CRISP FRESH  
**Cucumbers** ea. **1c**

BELLEFEUR  
**Apples** 6 lbs. **15c**

NO. 1 BURBANK  
**Potatoes** 10 lbs. **15c**

FRESH NORTHERN  
**Celery** 2 stalks **13c**

TENDER YOUNG  
**Corn SWEET** 6 full ears **13c**

**COFFEE EIGHT O'CLOCK** 3 lb. **55c**  
POUND—19c  
The World's Largest Selling Brand Coffee

**FLOUR GLOBE "A-1"** 10 lb. **44c**  
24½-pound sack \$1.00

**SNOWDRIFT SHORTENING** 1-lb. can **15c**  
3-Pound Can—43c

**BUTTER CLOVERBLOOM** lb. **31½c**  
FULL CREAM CHALLENGE—lb. 32c

**BROOMS KITCHEN NO. 5** each **45c**  
STRONG AND DURABLE

**WESTERN BEER** FULL STRENGTH 4 11-oz. bottles **25c**

**Post Toasties** "THE WAKE-UP FOOD" pkg. **6½c**

**Baking Powder** CALUMET 1-lb. can **24c**

**TAPIOCA MINUTE** All Flavors pkg. **11c**

**JELL-O DESSERT** pkg. **5½c**

**COCONUT BAKER'S** 4-oz. pkg. **10c**

**LOG CABIN SYRUP** MEDIUM CAN **43c**

**Cleanser HOLLY** 2 cans **5c**

**Beans BAKED** HEINZ 3 16-oz. cans **25c**

**Spaghetti** HEINZ 3 13-oz. cans **25c**

**Ketchup** HEINZ 14-oz. bottle **17c**

**Cookies** N. B. C. Butter Chocolate Molasses 12-oz. pkg. **17c**

**Wheat Hearts** SPERRY 14-oz. pkg. **12c**

**Peaches** IONA Halves or Sliced No. 2½ ca. **12½c**

**Eggs** MONOGRAM-LARGE U. S. EXTRAS doz. **29c**

**Cake Flour** GOLD MEDAL SOFTASILK 5-lb. **26c**

**Ovaltine** Swiss Food Drink 50c Size Can **57c**

**Tomato JUICE** HEINZ 2 11-oz. cans **15c**

**Sugar** FINE GRANULATED 10 lbs. **48c**

**SPECIAL** coffee that assures that extra-delicious flavor!

**LOW PRICE** on this highest quality **BEN-HUR COFFEE** **30c** lb.

Best for all methods especially Silex

PRICES IN EFFECT THURSDAY, FRIDAY, SATURDAY, SEPT. 13, 14, 15, 1934

**A&P FOOD STORES**  
1319 SARTORI AVENUE, TORRANCE

## Worrell Family Arrive At Home After Long Trip

Many Interesting Scenes and Incidents Enjoyed On Tour to the East

Mr. and Mrs. S. S. Worrell and daughter, Miss Doris Worrell, arrived home last Friday from an extended motor tour of eastern states during which they visited many points of interest.

The family left Torrance on July 31, stopping the first night at Banning. The following day they drove to Phoenix, Arizona, and later to San Simon, where they visited Mr. Worrell's sister, Mrs. Frances Worley.

After leaving El Paso, Texas, where they visited a niece, the Worrells spent a day sight-seeing in the famous Carlsbad Caverns, lunched in the underground dining room 720 feet below the surface and viewed the weird and wonderful formations found in the many rooms and passages of that great natural wonder place.

Continuing their journey eastward they visited Fort Worth, Dallas, Texarkana, Nashville, Tennessee, through West Virginia to Winchester, Virginia, former home of Mrs. Worrell. Many historic places, battlefields, cemeteries, were visited. Washington, D. C. claimed them for a three-day stay, and en route to Chicago and the World's Fair, where another three days were spent, the family visited Philadelphia, Baltimore, New York, Albany and other large centers.

From a visit with Mrs. Worrell's relatives in Princeville, Illinois, they journeyed to Plattsmouth, Nebraska, to spend a few days with Mr. Worrell's sister-in-law, then to Goshenburg, where Miss Worrell enjoyed meeting many of her former college friends.

On the return journey stops were made at Salt Lake City, and Provo, Utah, with a trip through Zion National Park, and a short stay in Boulder City, Nevada, where they viewed the Boulder Dam by night.

Mr. Worrell stated that drought conditions in Iowa and Eastern Nebraska are extreme, everything burned out by the heat and continued lack of rainfall.

### STORY 2

Continued from Page 1

year. There is also a tax—of charge—of \$200.00 upon the transfer, rental or sale of any firearm subject to registration. This provision includes pawnbrokers who loan on such firearms, making them liable to \$300.00 special tax and \$200 on each "transfer" on which a loan is made.

The penalty for delinquency in paying special tax is 25% of the tax. The penalty for failure to return and pay special tax is \$200.00 or five years imprisonment, or both.

Collector Carter says forms are available at his office for registrations and payment of special tax. Registrations must be made and special tax paid at once.

Collector Carter says it is not necessary to bring guns to his office. Bring serial number, model, caliber, and state kind of firearm, name of manufacturer, and any marks of identification.

### Rat Had Bone Necklace

MINERAL SPRINGS, Tex. (U.P.)—A rat caught in a steel trap here had a hollow bone from a round steak around its neck. Evidently the rat had thrust his head through the hole in the bone when young and had not been able to free itself of the "collar."

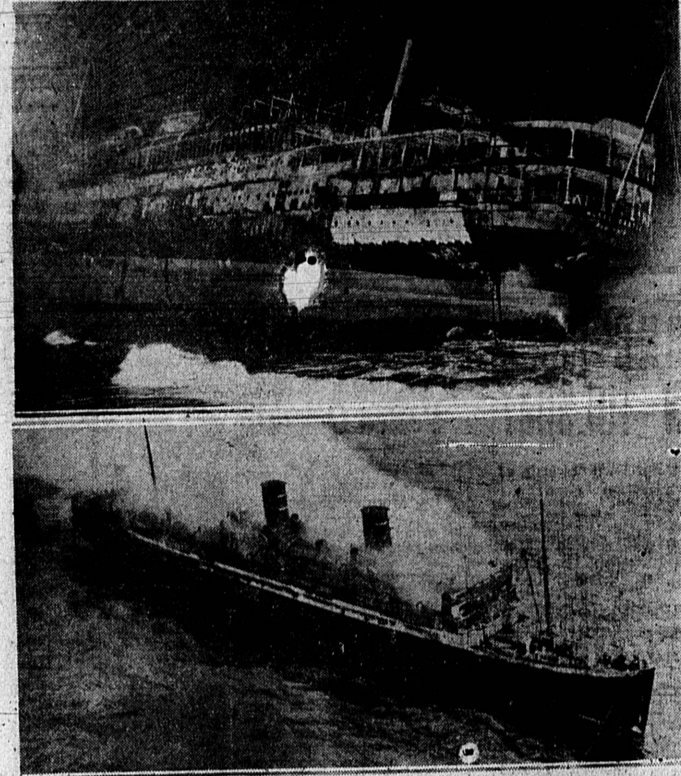
### SAVE YOUR ENERGY

No need to tramp around looking for bargains. Read the ads and save time... and money.

### Budget Cut Halts Work of Committee

The governmental simplification committee, headed by Dr. Walter W. Dexter of Whittier and which has been studying functions of government in the 14 municipalities of the county, will be discontinued next December 31. The order has been made necessary by the bureau of efficiency, due to the 15 per cent departmental cuts ordered August 30 by the board of supervisors.

## Blazing Ruins of Once Luxurious Liner



The blazing hulk of the S. S. Morro Castle, above, death trap for approximately 170 persons, lying off the boardwalk at Asbury Park, N. J., after the vessel had beached itself. Below is the ill-fated ship still in flames as some of the remaining officers and crew stood on the beach of New York harbor.

## Rescue Hero



Capt. H. Jeffries Davies, skipper of the Monarch of Bermuda, who saved his ship to the rescue of the flaming Morro Castle immediately after the first SOS was sounded.

## Budget Cut Halts Work of Committee

The governmental simplification committee, headed by Dr. Walter W. Dexter of Whittier and which has been studying functions of government in the 14 municipalities of the county, will be discontinued next December 31. The order has been made necessary by the bureau of efficiency, due to the 15 per cent departmental cuts ordered August 30 by the board of supervisors.

## EVENING HIGH SCHOOL

Beginning Monday, September 17, at 7 p. m., the following classes have been scheduled for the evening school. An early enrollment will help your school:

Arts and crafts, Monday and Wednesday.

Commercial, Monday, Wednesday and Thursday.

English, Monday and Thursday.

Commercial law, Monday and Wednesday.

Diesel engine, Monday and Wednesday.

Drum and bugle, Wednesday and Thursday.

Clothing, Monday and Thursday.

Americanization, Monday and Wednesday.

Mathematics, Monday and Wednesday.

Band, Thursday.

Forum (social and economic), Monday.

Spanish, Monday and Wednesday.

Men's gym (Civic Center), Monday, Wednesday and Thursday.

## Third Sermon On Parables

The parable of "The Hidden Treasure" will be the sermon parable for discussion next Sunday morning, September 16, at the Torrance Christian church. Rev. Elder, pastor of the church said: "The morality of the purchase of 'that field' has been called in question, because the original owner of the field was left in ignorance as to its real value. Jesus is not here discussing a business ethic. He is approving, rather, the man's instant appreciation of supreme worth when it is found."

## Ill-Fated Master



Capt. Robert Willmott of the S. S. Morro Castle, who did not live to see his command burn with an appalling loss of life. Capt. Willmott died the night preceding the fire from a heart attack.

## Special Service At Central Ch.

On next Sunday morning Rev. A. J. Boelter of Los Angeles will conduct the services at Central church. Holy communion will be observed and a special musical program will be rendered. Rev. Mr. Boelter is well known in Torrance as he was district superintendent for eight years.

# CHESS

By A. L. PAUL

Your comments, criticisms and suggestions are solicited. Questions on chess will be answered through this column. Address all communications to A. L. Paul, Box 736, Torrance.

Among those who expressed thorough enjoyment of the Torrance Chess and Checker Club meeting last week were Messrs. H. M. Roberts, McNew, Hovild and Shriner, all of Torrance. Regular meetings of the club are held every Monday evening from 7 to 11 at the Recreation Hall on Cabrillo avenue, opposite the Chamber of Commerce. Bring your chess and checker sets.

Sultan Khan of Turkey ranks high among the world's greatest chess masters. He has contributed much to the science of the game, having made enviable scores in many international master tournaments.

Many exciting and dramatic moments have often occurred on the master's chess board, but none more so, we think, than that which took place in a match game between Barry, an English master of note, and Pillsbury, the brilliant and versatile former United States champion. Barry played white and Pillsbury black. The position after black's 31st move is given in the Forsythe notation, which latter was described in a former issue of this column.

After black's 31st move white announces mate in 13 moves! It is suggested that you examine the position before playing out the text.

The position: f6k1: 4R1p: lqpp3p: p1pb1b1q: 5P2: 2P1P: p3r3k: 1b3 and white announces mate in 13 moves as follows:

- |             |        |
|-------------|--------|
| 32. Rxf6    | KxR    |
| 33. Rxf7ch  | K-N    |
| 34. QxP     | B-N8ch |
| 35. K-R     | B-Q5   |
| 36. PxR     | QxP    |
| 37. Q-N5ch  | K-R    |
| 38. Q-R4ch  | K-N    |
| 39. Q-N3ch  | K-R    |
| 40. B-B3    | Qx3    |
| 41. QxCh    | P-Q5   |
| 42. QxPch   | R-B3   |
| 43. QxRch   | K-N    |
| 44. Q mates |        |

The writer has delayed giving an analysis of one of his own games played by mail until next week.

In the next issue of this column the writer also proposes to introduce a comparatively new and novel form of chess play, known as "Solo-Chess," intended to provide amusement and instruction to the person at home alone yet wishing to play.

### A CHESS PRIMER Lesson II.

There are two common patterns for chess pieces in use today. The one favored by most experienced players, as well as in popular use by clubs and masters, is the Staunton pattern. It was named after that of its designer, the old English master. The other pattern, less used and much less popular, is known as the French style. We shall only consider the former for the sake of brevity.

The pieces on each side comprise 16 units, namely: a King, a Queen, two Rooks, two Bishops, two Knights and eight Pawns. All units move according to different laws, and the difference in their movement constitutes the relative value of the fighting power they contribute towards achieving the ultimate objective of the game, namely, the capture of the opposing King.

Prior to start of play each player arranges his 16 units as follows: The Rooks (which resemble miniature castle turrets) are placed in the corner squares, and next to them on the first rank (horizontal row of squares) the Knights (those pieces shaped like horses' heads). Next to those again are the Bishops (pieces with diagonal slits in their tops, originally intended to look like a clergyman's head-gear). And in the center the King and Queen are placed, the white Queen on a light square, and the black (or red) Queen on a dark square. The eight Pawns occupy the ranks immediately in front of the pieces. From this position white moves first, after which the players move alternately.

### Tenn. Plans Products Show

NASHVILLE, Tenn. (U.P.)—Tennessee will hold her annual six-day exposition of native products in a completely renovated and enlarged fair grounds here, starting Sept. 17. More than 1,000,000, supplied mainly by federal relief agencies, was expended in improving the grounds and buildings.

### Show Sun-Popped Popcorn

LITTLE ROCK, Ark. (U.P.)—Sun-popped popcorn displayed here by Joe Weber was proof enough for residents that the weather had been warm. Popped kernels on several cars still in the shuck were found in the garden behind his house.

**Constipation**  
If constipation causes you Gas, Indigestion, Headaches, Bad Sleep, Pimply Skin, get quick relief with ADLERIKA. Thorough action, yet gentle, safe.

**ADLERIKA**  
Dolley Drug Co.—Adv.

*"A Woman must have had a hand in styling the new FORD V-8"*

• A handy compartment for gloves and purse.

• A steering ratio that makes parking decidedly easy.

• Plenty of body, head, and leg room in the rear seat.

**\$505** and up. F. O. B. Detroit. Easy terms through Universal Credit Company—the Authorized Ford Finance Plan.

**SCHULTZ & PECKHAM**  
1514 Cabrillo, Torrance Phone 137