

POLITICAL ADVERTISEMENT POLITICAL ADVERTISEMENT

Re-elect Congressman Charles J. **COLDEN**



He supported President Roosevelt and the New Deal. He can be depended upon to continue to support the Roosevelt Administration. He is 100% for Old Age Pension. He is thoroughly experienced in Harbor Affairs and is a member of the powerful Rivers and Harbors Committee in Congress. He helped Torrance get a new Post Office, and also assisted materially in the opening of the Torrance National Bank.

"Keep Colden In Congress" Primaries, August 28, 1934

POLITICAL ADVERTISEMENT POLITICAL ADVERTISEMENT POLITICAL ADVERTISEMENT POLITICAL ADVERTISEMENT

TORRANCE C. WELCH



ONLY Candidate From Torrance and Lomita (Lomita Township) Running For

Justice of the Peace

New Inglewood Township
Ablly Qualified by Legal and Business Training

ENDORSED by the Following Torrance and Lomita Citizens:

Judge Charles T. Rippy
James W. Post
Grover C. Whyte
Donald Findley
L. J. Gilmeister
J. C. Smith
Dr. J. S. Lancaster
W. H. Tolson

Judge Esther I. Dennis
Dr. Geo. P. Shidler
Ed Clarkson
Sam Levy
F. R. Leonard
W. H. Stanger
J. E. Hitchcock
A. H. Bartlett

Judge L. J. Hunter
John Holm
Barron A. Beckham
Norman P. Herr
R. L. Kemp
Norman Gardiner
George G. Key

POLITICAL ADVERTISEMENT POLITICAL ADVERTISEMENT

California
Needs ---
FRANK F. MERRIAM
for GOVERNOR

ABLE :: DEPENDABLE :: CAPABLE

This is No Time To Experiment With Inexperience

Primary August 28

Election November 6

Vote For GENUINE AMERICANISM



POLITICAL ADVERTISEMENT POLITICAL ADVERTISEMENT

ELECT

GEORGE J.

HATFIELD

Lieutenant-Governor

"I am firmly opposed to the imposition of any additional tax burden on the home-owner, the farmer, or common taxpayers generally, and will oppose any effort to levy an ad valorem, or direct property tax to meet the state deficit."

—GEORGE J. HATFIELD

POLITICAL ADVERTISEMENT POLITICAL ADVERTISEMENT POLITICAL ADVERTISEMENT POLITICAL ADVERTISEMENT

WIN with CREEL



ELECT



JUDGE R. MORGAN GALBRETH
to the
SUPERIOR COURT
OFFICE NO. 19
Eight years in Municipal Court
Experienced and Capable
Primaries Aug. 28, 1934

FREE THEATRE TICKETS!
Turn to the classified page.

POLITICAL ADVERTISEMENT

RE-ELECT



ED W. HOPKINS

COUNTY ASSESSOR

(Primaries, August 28)

Capable
Honest
Experienced

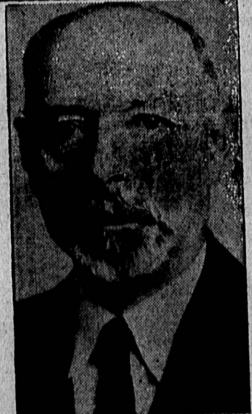
READ OUR WANT ADS

POLITICAL ADVERTISEMENT POLITICAL ADVERTISEMENT POLITICAL ADVERTISEMENT

Henry E. CARTER
Assembly Candidate

HE FAVORS: ---

Keeping out of our Markets Japanese fish and by-products.
Wages increased with increasing profits of employers.
Arbitration of all labor difficulties between employers and employees.
Curbing large combination of capital in banking and industry, which destroys the small business man.
Conservative, but adequate support of our schools to give every child the benefit of an education up to the highest modern standards.
Immediate enactment of old age insurance or pension laws.
Tax exemption for small home owners.
Reduction in State expenditures, resulting in lower taxes.



POLITICAL ADVERTISEMENT POLITICAL ADVERTISEMENT

Re-Elect At the Primaries

Judge WESTOVER

16 Years Judicial Experience — OFFICE No. 13
Originator of the Westover Plan to sift out needless testimony before trial, speed justice and save the taxpayers millions.
Partial List of Organization Endorsements of JUDGE MYRON WESTOVER



California Veterans' Association
Central Voters' Council
Central Labor Council
Central Labor Council, San Pedro
Central Labor Council, Santa Monica
Central Labor Council, Pasadena
City Govt. Ninth Councilmanic District
Colored Non-Partisan League
Elysian Civic League
Eastside Civic Association
Eastside Protective League
Four Railroad Brotherhoods
Jayhawker Sunflower League
Municipal League
People's Protective Association
Spanish-American League
United Slavic-American Club
Third Los Angeles District Association
Women's Political League
Women's Political Study Club

JUSTICE OF THE PEACE of Inglewood Township

Five years Judge of Gardena Township without reversal or jury trial.

By special request has served as judge pro-tem in practically all courts of the new township.

Three years' assignment as judge of Los Angeles Municipal Courts.

Resident of new Inglewood Township for 35 years.

POLITICAL ADVERTISEMENT POLITICAL ADVERTISEMENT POLITICAL ADVERTISEMENT POLITICAL ADVERTISEMENT

ELECT Judge LUCIUS P. GREEN OFFICE 19
SUPERIOR COURT

Only Candidate Endorsed by L. A. County Bar Associations

POLITICAL ADVERTISEMENT POLITICAL ADVERTISEMENT



A BUSINESS MAN
A PRACTICAL MAN
18 Years in the Harbor District
27 Years in California

GEORGE G. Aitkenhead
DEMOCRAT

FOR Assembly

68th DISTRICT
Primary Election August 28, 1934

Promises Good Service, Economy and Efficiency in State Government

POLITICAL ADVERTISEMENT POLITICAL ADVERTISEMENT



ELECT Edward KOSIN

ASSEMBLYMAN
Sixty-Eighth District
Member of Organized Labor Since 1901
HE WILL HELP END POVERTY

Endorsed by I. L. A. LOCAL NO. 38-82 of San Pedro, California

Edward Kosin is privileged to wear the 25-year membership pin of the Brotherhood of Railroad Trainmen

Free Picnic . . . Rally and Open Air Dance
SUNDAY, AUGUST 26, 1934

1 P. M. 'TILL? - PARADISE GROVE Lomita, Calif.
26011 Pennsylvania Ave.

POLITICAL ADVERTISEMENT POLITICAL ADVERTISEMENT

Able Honest



Progressive Free

WORLD WAR VETERAN
DEMOCRATIC CANDIDATE FOR
Assembly - 68th District
ROBERT

HILLYER

5-POINT PROGRAM

- 1. Make the Sales Tax a Manufacturers Sales Tax. Exempt the necessities of life.
 - 2. Exempt small homes from taxation.
 - 3. Protect labor and the masses with unemployment insurance.
 - 4. Protect the old people with old age pensions or retirement fund.
 - 5. A World's Fair for a World Harbor at Wilmington in 1942.
- VOTE FOR HILLYER — PRIMARIES AUG. 28th

POLITICAL ADVERTISEMENT POLITICAL ADVERTISEMENT



RE-ELECT JUDGE EDMONDS
To the Superior Court
Office No. 3

At the Primary Election August 28th
Endorsed by Los Angeles Bar Association

Read Our Want Ad Columns Every Issue, They Get Results!