

Announcing... New Arrivals

For AUTUMN

Dresses... Hats Suits... Coats

You'll simply adore these new Fall Styles and Fabrics. Why not make your selections now, and pay for them on the lay-away plan.

All Pastel and Light Print DRESSES GREATLY REDUCED

The most EXCITING hosiery innovation in years!

Bringing you new comfort and freedom from:

- "burst" knees when you kneel garter-rips when you stretch



85c and \$1.00 KNEE HIGH HOLEPROOF

SAM LEVY 1311-1313 Sartori-Torrance

POLITICAL ADVERTISEMENT POLITICAL ADVERTISEMENT

Elect Torrance C. WELCH

Justice of the Peace OF THE NEW INGLEWOOD TOWNSHIP

Qualified by 10 Years Law Practice and 15 Years Business Experience. Primary Election, August 28, 1934

POLITICAL ADVERTISEMENT POLITICAL ADVERTISEMENT

Re-elect

Congressman Charles J. COLDEN



He supported President Roosevelt and the New Deal. He can be depended upon to continue to support the Roosevelt Administration. He is 100% for Old Age Pension. He is thoroughly experienced in Harbor Affairs and is a member of the powerful Rivers and Harbors Committee in Congress. He helped Torrance get a new Post Office, and also assisted materially in the opening of the Torrance National Bank.

"Keep Colden in Congress" Primaries, August 28, 1934

Tentative Budget Considered By Supervisors Will Boost Tax Rate

The tax rate for Los Angeles county for the present fiscal year is estimated by the supervisors will be \$1.69 per \$100 valuation, exclusive of interest and sinking fund requirements...

The proposed rate, based on the preliminary budget figures, when the interest and sinking fund requirements are added, will be approximately \$1.72...

The application in estimating the tax rate stated: "The respective tax rates of Los Angeles county for the years of 1932-33 and 1933-34 are set forth together with the estimated proposed tax rate for the fiscal year 1934-35..."

The tax rate in 1932-33 was 88 cents and in 1933-34 was \$1.20. The supervisors based their case to the board of equalization on the fact that the cost of carrying problem cases, for which the county is solely responsible, will, in the year 1934-35, based upon the present case load of 34,000 in number, exceed by approximately \$2,625,000, the expenditures permitted under the limitations of Section 29 of Article II. of the state constitution.

The flood control district also has a petition on file with the board of equalization asking permission to boost the flood control rate from 3 cents per \$100 valuation as it was last year to 5 cents this year.

The necessity for a permanent flood control and other improvements in the system are cited. The requirements for expenditures this year are given as \$1,796,900 as compared to \$755,263 last year. Permission is asked to expend for 1934-35 the sum of \$850,000 in excess of 105 per cent of the amount expended during 1933-34.

The application also cites that the assessed valuation for the district has been reduced. In 1932-33 the actual valuation for the district was \$2,322,941.40 and in 1933-34 it was \$2,040,655.500. The estimate for this year is that it will be \$2,000,000,000, or \$40,655,500 less than last year.

Tax Saving Due To Efforts Of Public Official

State Controller Ray L. Riley Sponsor of Law Limiting Expenditures

Ray L. Riley, state controller, who is seeking re-nomination for the office at the primaries on August 28, has been in public life for many years.

His public service in California



RAY L. RILEY State Controller

began as city trustee, Colton, for four years; county supervisor, San Bernardino county, for six years.

Appointed by Governor Stephens as state water commissioner, 1918; first real estate commissioner, 1919; in 1922 he was appointed state controller and was elected to that office in the same year. He has been returned to this office by an overwhelming plurality at each election. In 1930 he received 937,492 votes, defeating his opponent by 686,017 majority.

He has always taken an active interest in the tax problem and is nationally recognized by being elected as a member of the executive committee of the National Tax Association.

During his administration of the office of controller antiquated bookkeeping has been replaced by modern cost accounting and reporting in consonance with the federal reporting system, and in 1924, for the first time in 75 years the people of California knew to a penny the cost of state government for the prior year.

He sponsored the law, limiting the annual increase in the expenditure of state and county funds to 5% of the previous year which has saved local taxpayers a vast amount of money. He has steadfastly opposed increasing the ad valorem tax on real estate and has strenuously endeavored to equalize the burden of taxation.

Incendiary Suspected In Sunday Fire

Fire, thought to be incendiary origin, destroyed a small house and contents owned by George E. Bailey, Pacific Electric machinist, at 220th and Normandie, about 2:30 o'clock Sunday afternoon.

The blaze started in a field adjoining the house and spread to the dwelling. Before the arrival of the Wilmington fire department, the property had been destroyed in spite of valiant efforts of Mr. and Mrs. Chambers, neighbors, who attempted to fight the blaze.

That the fire was the work of some unknown irresponsible person is suspected because of the fact that on the way the Wilmington department was forced to stop at two other locations where fire of unknown origin was burning in fields between 220th street and Wilmington. This delayed the firemen so that by the time they reached the Keystone premises the house had already collapsed.

As the property has been untenanted for some time there was no insurance. This is the second time Mr. Bailey has lost property by fire within the past four months. Bailey had been attending the Moose convention at Long Beach, and returned at 6:30 to find his property smoldering.

State Picnics

IOWA Judge Carl A. Stutsman, president of the Iowa Association of Southern California, makes final call for the great annual reunion of the Hawkeyes of the West, Bixby Park, Long Beach, all day, Saturday, August 11.

DIXIE Former residents of eight states will unite in a big jolly "Dixie" picnic reunion, all day, Saturday, August 18, in Sycamore Grove Park, Los Angeles. An invitation is given every one from Virginia, North and South Carolina, Georgia, Mississippi, Florida, Alabama, Louisiana. Each state will have its own place, will serve coffee, supply badges, open county registers.

TENNESSEE Meet your old friends from home at the reunion of the Tennessee Association at beautiful Sycamore Grove, Monica, Ocean and San Vicente boulevards, August 12, 1934. Judge Turner Fox of Glendale and Judge Walter Guerin, president of Pomona State Society will speak. The Happy Mountaineers and Dad Cate will be there.

CALLED TO SEATTLE Mrs. M. Louise Lynch left this week for Seattle, Washington, called there by the serious illness of her sister.

New Trial Set In Case Against Snyder

William G. Snyder, ex-steel worker, who was charged by Mrs. H. D. Ballinger, a Los Angeles school teacher, with obtaining \$108 of her money under false pretenses, will have a new trial Tuesday, August 21. The jury of the jury to agree on a verdict at the first hearing on August 3, caused the new date to be set. By stipulation only 11 men sat on the jury last Friday.

EASTERN VISIT Mrs. James Omohundro, of Lomita, expects to leave next week for the east where she will visit relatives. Her first trip to the east in 15 years.

CONTINUING the Star Furniture Company's

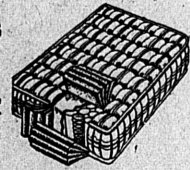
August Furniture Sale

Many Super Values Added to Big List Advertised Last Week

New 9x12 MERCURY RUGS Suitable For Living Room Special \$14.95 Easy Terms

LIVING ROOM SUITE \$29.50 Davenport and Chair, Tapestry Covered. Reversible Cushions. Easy Terms! BEDROOM SUITE, 4 Pieces \$32.50 Walnut Veneer, Very Attractive! Terms GAS RANGES, Reduced to \$34.50 Los Angeles Made. Choice of Right or Left Hand Oven. Easy Terms.

INNER-SPRING MATTRESS Just a Few Left at \$10.75



Do not compare these with cheaper Inner-Spring Mattresses. Others, \$13.95 to \$42.50. We Carry a Complete Line of SIMMONS SPRINGS & MATTRESSES

AT THE STAR - - - You Pay the Firm You Buy From! No finance company to bother you, as the STAR handles its own accounts, giving you LOWEST CARRYING CHARGES



Washers

The STAR Has the Big Line in Town:

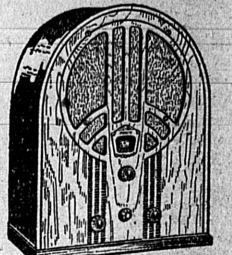
- * THOR * APEX * EASY * GENERAL ELECTRIC

\$44.50 to \$154.50 Easy Terms Pay As You Save!

The STAR is Headquarters For Electric Refrigerators

- * KELVINATOR * FRIGIDAIRE * O'KEEFE & MERRITT * CROSLEY

15c A Day Will Buy An Electric Refrigerator at the STAR



Model 60-B, as shown, \$32.00 Brand New 1935

PHILCO RADIOS - \$22.90 AND Other Radios, \$13.95 and up Small Down Payment, Easy Terms We Are Authorized Agents For RCA Cunningham Radio Tubes

Just a Few 1934 Model Radios Left On Which We Are Giving EXCEPTIONALLY BIG TRADE-IN ALLOWANCES

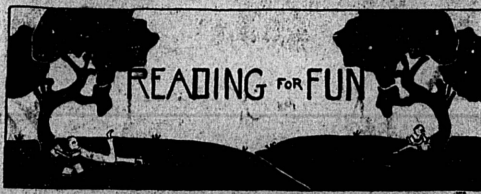
Now is your opportunity to get a Big Price for your obsolete radio in exchange for a new 1934 model. We are agents for Philco, Spartan, Grunow, General Electric, Tiffany Tone, and Royal Radios. Many models from which to choose. Also Exceptional BARGAINS

IN-USED RADIOS During This Clearance Sale

Auto Radios \$34.95 Of All Kinds And Up

RADIO REPAIRING By Skilled Technicians On All Makes of Radios Our Prices Are Reasonable

Star Furniture Co. 1273 Sartori Ave. Torrance Phone 620 "WE CHALLENGE CITY PRICES"



READING FOR FUN

When spring turns into summer and vacation is here, the outdoors calls and books seem like something to be forgotten until school begins. But do you know the names of the flowers? Can you name anything about the habits of the forest creatures you saw on your camping trip last summer? How were mountains made? What causes the weather? Here are some books that will help you to greater enjoyment of the whole outdoor summer world. Ask for these and others at your nearest county library branch.

Book of the Woods by Gauss; Ekorn by Loe; Gray Eagle by Sass; Way of the Wild by Sass; More Wild Folk by Scoville; Wild Folk by Scoville; Chip; My Life and Times by Untermyer; Trees, Stars and Birds by Moseley; Brook Book by Miller; Holiday Hill by Patch; Holiday Meadow by Patch; Stories of Rocks and Minerals by Fairbanks; Strange Adventures of a Pebble by Hawks; Earth; For Sam by Reed; World's Moods by Helle; Young Collector by McMillen; Boy Collector's Handbook by Verrill; Burgess Flower Book for Children by Burgess; How to See Plants by Daglish; Green Magic by Kenly; As California Wild Flowers Grow by Chandler; Western Forest Trees by Berry; Forest Glant by Chaffee; Tamba of Torrey Pines by CBH; Trees That Every Child Should Know by Rogers; Disappointed Squirel by Hudson; Ways of Wood Folk by Long.

Forest Friends by Evans; Animal Life in Field and Garden by Fabre; Ladder of Life by Nida; Holiday Pond by Patch; Secret Trails by Roberts; Stir of Nature by Carr; How to See Beasts by Daglish; Pollywiggie's Progress by Bronson; Wagtail by Gall; Burgess Animal Book for Children by Burgess; Our Wild Animals by Moseley; Squirrels and Other Fur-Bearers by Burroughs; Ringtail by Gall; Twin Grizzlies of Admiralty Island by Holzworth; Bar-Rac, the Biography of a Raccoon by Hoyt; True Bear Stories by Miller.

Funeral Services Held Monday For Homer Norcross

Funeral rites were conducted Monday, August 6, for Homer O. Norcross, 732 Sartori avenue, engineer for the Rubbercraft Corporation of Torrance, who died last Friday at the Jared Sidney Torrance Memorial hospital. Services at the Stone & Myers Mortuary were followed by interment in the Masonic section at Forest Lawn Memorial Park in Glendale. The Torrance Masonic lodge officiated at the services.

Mr. Norcross, 61 years of age and a native of Templeton, Massachusetts, had been a resident of California since 1916. He leaves his wife, Mrs. Julia Norcross, of the above address; one daughter, Miss Christine Johnson, of Kansas, and one son, H. J. Norcross, of 1353 First avenue, Wilmington.

Water Brought 450 Miles WHARTON, Tex. (U.P.)—Water purchased 450 miles away for \$10,000 is being poured on the rice fields of Texas. Enough to cover 14,000 acres a foot deep was bought from the owners of Lake Brownwood. It is coming to the rice fields by the bed of the Colorado River. Evaporation and other losses are expected to use half the water before it reaches the farthest fields, about 470 miles from the lake.

Ladies' Night At Elks Lodge Set For August 28th

Carl B. Sturzanacker is Appointed District Deputy Grand Exalted Ruler.

Elks of Torrance are gratified to learn of the appointment of Carl B. Sturzanacker as district deputy grand exalted ruler of California South Central, a district which comprises all of Los Angeles county and parts of Orange and Ventura counties. Judge Sturzanacker is a past exalted ruler of Redondo Beach lodge which serves Torrance and other neighboring cities.

According to Tom Ulrich, organizer of the lodge and a well-known resident of Torrance, the month of August at the local lodge is to be given over to unusually interesting meetings coincident with the selection of the district deputy from Redondo Beach lodge.

A report is to be made by the representative to the grand lodge convention held at Kansas City last month. It will include the year's program for all Elks lodges to combat communism.

A ladies' night on Tuesday, August 28, is the bright social event of the month. Entertainment is to be furnished by the Betty El Roy stage revue. Refreshments will follow.

FUNERAL SERVICES

Funeral services were held Saturday afternoon at 2 o'clock from Stone & Myers mortuary chapel for the late Leander Smart, who passed away at San Bernardino last week. Rev. O. D. Wonder of Central Evangelical church conducted the services, with Mrs. Thomas Ulrich as soloist. Interment was made at Roosevelt Memorial Park.

DON'T SLEEP ON LEFT SIDE - AFFECTS HEART

If stomach GAS prevents sleeping on right side try Adlerika. One dose brings out poisons and relieves gas pressing on heart so you sleep soundly all night. Dolley Drug Co.-Adv.

POLITICAL ADVERTISEMENT

Assemblyman



RE-ELECT John T. Rawls DEMOCRATIC STATE Assemblyman Tuesday, Aug. 28 Record of Service: 4 years Democratic County Central Committee 2 Years Chairman, State Central Committee, 68th District 2 Years State Assemblyman

POLITICAL ADVERTISEMENT POLITICAL ADVERTISEMENT

Newark Lincoln Burton ATTORNEY-AT-LAW Candidate For Justice of Peace Inglewood Township PRIMARY ELECTION August 28th Formerly U. S. Commissioner and Probate Judge First Judicial Division of Alaska under President Wilson's Administration. Has resided in Gardena, California, for over 13 years; at present serving as City Attorney. If elected, promises justice for all; privileges for none.

A BUSINESS MAN A PRACTICAL MAN 18 Years in the Harbor District 27 Years in California GEORGE G. Aitkenhead DEMOCRAT FOR Assembly 68th DISTRICT Primary Election August 28, 1934 Promises Good Service, Economy and Efficiency In State Government