

CHURCHES

"GO TO CHURCH SUNDAY!"

Church notices, to be assured of publication, should be in the Herald-News office before 10 a. m., Tuesday. Every effort is made to publish them all, but occasionally when they are late they must be omitted.

FIRST LUTHERAN
Aescia avenue and Sonoma street. Phone 591. Frank D. Mechling, pastor.
Sunday school, 9:30 a. m.
Morning service, 10:45 o'clock.
Subject of sermon, "This I May Not Do."
Choir rehearsal on Wednesday at 8:00 p. m.
Friday, June 22, 8:00 p. m., an illustrated lecture at the church, "From the Dawn of Creation to Abraham." Beautiful colored pictures will be used. Our families and friends are invited.

FIRST CHURCH OF CHRIST SCIENTIST, TORRANCE
Former Dominguez Bldg., 1203 El Prado.
Sunday schools, 11 a. m.
Sunday school classes, 9:30 a. m.
Wednesday evening meetings are held at 8 o'clock.
Reading room, 1203 El Prado.

CHURCH OF THE LATTER DAY SAINTS
Woman's Club, 2422 Engracia.
Harry V. Jordan, bishop.
Sunday school, 10 a. m.
Evening service, 7 o'clock.
Monday, Relief Society at 2 p. m.; Genealogical Society at 7:30 p. m.
Friday, 7:30 p. m., choir practice.

FIRST CHRISTIAN
Engracia at Arlington avenue. Phone 77-M. George Elder, pastor.
9:30 a. m., the church school meeting in several assemblies with classes for every age.
Morning service, 10:50 o'clock. Sermon and communion.
Evening service, 7:30 o'clock.
"The Sign of the Cross," a Bible drama, will be presented in this hall by a Los Angeles cast.
Sunday evening, 8:30 o'clock.
Young People's Christian Endeavor.
Wednesday evening, 7:15 o'clock, meeting for praise, prayer, testimony, Bible study and fellowship.
The choir meets for rehearsal each Wednesday night at 8:15 o'clock.

CHRISTIAN SCIENCE CHURCHES
"In the Universe, including Man, Swayed by Atomic Forces" This question is the subject of the Lesson-Sermon on Sunday in all Churches of Christ, Scientist, branches of The Mother Church, The First Church of Christ, Scientist, in Boston, Mass. The Golden Text is from Paul's first epistle to the Corinthians: "To us there is but one God, the Father, of whom are all things, and we in him."
Among the Bible selections in the Lesson-Sermon are the verses from Genesis: "And God said, Let there be light: and there was light. And God saw the light, that it was good: and God divided the light from the darkness. And God called the light Day, and the darkness he called Night. And the evening and the morning were the first day."
Correlative passages from the Christian Science textbook, "Science and Health with Key to the Scriptures," by Mary Baker Eddy, present the statements: "God, Spirit, dwelling in infinite light and harmony from which emanates the true idea, is never reflected, except by the good." "Let there be light: is the perpetual demand of Truth and Love, changing chaos into order and discord into the music of the spheres."

Lomita Churches

COMMUNITY PRESBYTERIAN
Brothers street, Lomita.
Sunday school, 9:30 a. m.
Morning service, 11 o'clock.
Evening service, 7:30 o'clock.
Intermediate and Senior Christian Endeavor, 6:15 p. m.
Prayer service, 7:30 p. m., Thursday.
Choir practice, 7:30 p. m., Thursday.

SOUTH LOMITA CHURCH
The friendly church. Fundamental, evangelistic. 2341 25th street, Lomita. T. C. Colwell, acting pastor.
Sunday school, 9:30 a. m.
Morning service, 11:00 o'clock.
Young people's meeting, 8:30 p. m.
Evening service, 7:30 o'clock.
Teacher's lesson study and prayer meeting, Wednesday, 7:00 p. m., at 2341 25th street.

CATHOLIC CHURCH
Lomita boulevard.
Father O'Keefe, pastor.
Mass celebrated Sundays at 8:30 a. m.

SEVENTH DAY ADVENTIST
Weston and Walnut street, Lomita. C. Phillips, elder.
Sabbath school, 9:45 a. m.
Prayer meeting, 11 a. m.
Prayer meeting Wednesday at 7:30 p. m.

COMMUNITY INTERDENOMINATIONAL
2456 Hawthorne avenue, Lomita. H. A. Lashley, pastor.
Sunday school, 9:45 a. m.
Morning service, 11 o'clock.
Evening service, 7:30 o'clock.
Young people's service, 8:30 p. m.
Wednesday, 7:30 p. m., prayer meeting.

MEN'S BIBLE CLASS

A Bible class for the men of the community by the men of the community. Sessions held each Sunday morning at 9:30 o'clock at the Torrance Theatre. Harry F. Dierker, president, and Rev. G. G. Elder, teacher. All men are welcome.

FOUR SQUARE GOSPEL

Torrance boulevard at Portola. Rev. John Burbury, pastor.
Sunday school, 9:30 a. m.
Morning service, 10:30 o'clock.
Evening service, 7:30 o'clock.
Tuesday, 7:30 p. m., prayer meeting.
Friday evening service at 7:30 o'clock.

CATHOLIC CHURCH OF THE NATIVITY
Cota and Manuel avenues.
Rev. Thomas Kennedy, pastor.
Phone 332.
Mass celebrated Sundays at 7:30 and 9:30 a. m.
Sunday school, 10:30 a. m.
Benediction, 7:30, Sunday evening.

METHODIST EPISCOPAL CHURCH

El Prado and Manuel. Kemp J. Winkler, pastor.
9:45 a. m., church school hour.
Leonard Snyder, superintendent.
Classes for all ages.
11:00 o'clock, morning worship hour. Family day. Consecration of church officers. Sermon by the pastor.
6:30 p. m., Epworth League hour. Meeting in charge of the young people from Wilmington League.
7:30 o'clock, evening church service. Henry Van Dyke's "The Lost Word," will be read by Mrs. Juliet Brown. The pastor will speak on "The Story of Methodism." Installation of choir officers.

CENTRAL EVANGELICAL

Marcellina and Arlington avenues. O. D. Wonder, minister.
Sunday school at 9:45 a. m.
W. E. Bowen, superintendent.
Divine worship at 11:00 a. m.
Sermon by the pastor.
Junior and Intermediate C. E. at 6:30 p. m.
Evening worship at 7:30 o'clock.
Prayer meeting, Wednesday evening at 7:30 o'clock.
The Ladies' Guild will hold a food sale Saturday morning at 10 o'clock at the entrance of the Masonic hall on Sartori avenue.

Noted Christian Science Lecturer Here Next Mon.

Hon. William E. Brown, C. S. B., of Los Angeles, will deliver a free lecture on Christian Science at the Masonic Temple, 1321 1/2 Sartori avenue, Torrance, on Monday, June 25, at 8 p. m.

Mr. Brown is a member of the Board of Lectureship of the Mother Church, The First Church of Christ, Scientist, in Boston, Massachusetts. Members of the Torrance church extend a cordial invitation to the public to attend this lecture next Monday evening. Doors will be open at 7:30 p. m.

M. E. Church Closes Conference Year With Two Services

Rev. Kemp J. Winkler, pastor of the First Methodist church, which is now closing its conference year, will go to Long Beach on Tuesday to attend the annual conference of the church. As a fitting culmination of the year's work, two special services are planned for Sunday.

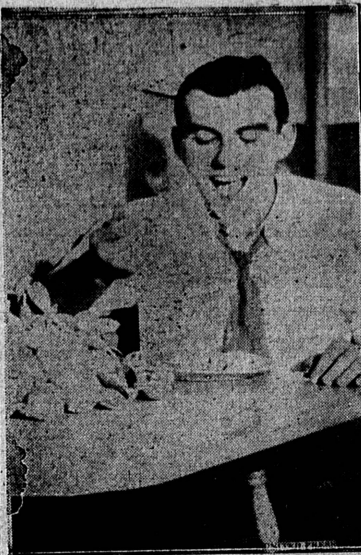
The morning service will be in the nature of a Family day. All of the families of the church are asked to attend and sit together as families. The new officers of the church will be consecrated to their tasks at this service and the pastor will bring a sermon appropriate to the family nature of the day.

In the evening at 7:30 o'clock there will be another attractive service. The new officers of the choir will be installed in a special ceremony. Mrs. Juliet Brown will read Henry Van Dyke's beautiful story, "The Lost Word," and the pastor will speak on "The Story of Methodism." This will be the closing message in the current evening series of sermons on "Christianity's March of Triumph."

ST. ANDREW'S EPISCOPAL
1418 Engracia avenue. Rev. F. Murray Clayton, vicar; 1222 Arlington avenue; phone 617.
Holy communion, 7:30 a. m.
Sunday school, 9:30 a. m.
Morning service, 11:00 o'clock.
Woman's Auxiliary meets the first and third Thursdays of the month at 2:30 p. m. in the Guild hall.

Winnipeg Plans Huge Radio
WINNIPEG, Man. (U.P.)—Winnipeg will have the largest radio station in Canada shortly. The Manitoba Telephone Commission plans to erect a 15,000-watt station to replace their present CKY plant. It will equal some of the largest in the United States and surpass all radio stations in Canada.

He Cla(i)ms Championship



George Sheridan claims to be the clam-eatingest man in the vicinity of Olympia, Washington. Sheridan, secretary to State Treasurer Otto Case, ate 193 rock clams such as these piled up in front of him.

STORY 1

Continued from Page 1

Betty Terwilliger, Dorothy Weber, Fern avenue school will graduate 20 A-6 pupils at the end of this semester, on June 22, who will enter junior high school at the beginning of the fall term. Those who are included in the A-6 list are Jimmie Dowell, Van Ness Barnard, William Bosche, Billy Buckley, Walter Edmunds, Charles Grubb, Carl Joyce, Kayl Takemoto, Robert Wolstencraft, Keith Wright, Ki-yoka Hasegawa, Betty Hatton, Christine Mauk, Mary Louise Pina, Margaret Pinkham, Gloria Snow, Ethel Stumph, Thelma Wright, Leonard Thorsen and William Hunsaker.

SUNDAY NIGHT

June 24 - 7:30 P. M.
THE SOLDIERS OF THE CROSS CLASS
(The June 1934 Graduating Class of Angelus Temple Bible School) Will Present the Entire Service
75 Young People
Songs - Instruments
Spiritual Messages
YOU ARE INVITED

FERA TO AID HAY FEVERITES

STURGEON BAY, Wis. (U.P.)—Eradication of ragweed as a FERA project to improve this summer resort area and make it a haven for hay fever victims is planned in several Door county townships.

Fare Stole Shoes

AUSTIN, Tex. (U.P.)—Taxi Driver Jim Cornelli needed no meter to tell him how far he had driven when a "fare" poked a pistol in his ribs; made him take off his shoes; get out of the taxi and walk back in his sox.

GRUBB'S MARKET
CHOICE MEATS
PHONE 779-TORRANCE
IN SAFEWAY STORE 1929 CARSON ST.

TAKE YOUR CHOICE

In any Meat—for at Grubb's you can't make a mistake. All meat is the same—the Highest Quality obtainable.

Pure Lard or Shortening, 2 lbs.	15c
Pork Shoulder Roast, lb.	12 1/2c
Boneless Beef Stew, 2 lbs.	25c
Lamb Shoulder Roast, lb.	18c
Short Ribs of Beef, lb.	8c
Lamb Stew, lb.	10c
Beef Pot Roast, lb.	12 1/2c
Veal Stew, lb.	10c
Fresh Ground Hamburger, 2 lbs.	15c
Luer's Hygrade Sliced Bacon, lb.	25c

Drama Society Presents Play

"The Challenge of the Cross," well-known Bible drama, will be presented at the Torrance Christian church next Sunday evening, June 24, at 7:30 o'clock. A cast of seven characters of the Dramatic Society of the South Broadway Christian church, Los Angeles, will present the play, assisted by a male quartet from the same church. The cast will bring its own stage and lighting effects. The people of the community are cordially invited to witness the play. A silver offering will be taken.

Painting Activity Shows An Increase

E. P. Kent, local property owner who recently contracted to have three of his houses repainted, announces that the jobs are nearly completed and have greatly improved the appearance of the properties. Beautifying properties is a grand way to increase the general appearance of the town. Torrance is naturally an attractive town and fresh, gleaming paint does wonders towards increasing this natural beauty.

SAFEWAY and PIGGLY WIGGLY

CANNING SUPPLIES SALE

Jars to the front! Buy today and be prepared to preserve the season's finest fruits and vegetables when they reach their peak in perfection. Your neighborhood Safeway or Piggly Wiggly is headquarters for all canning supplies — jars, pectin; sugar, paraffine.

PURE CANE FINE GRANULATED SUGAR 45c
10 LBS. CLOTH BAG
Stock-up for canning! Sugar Prices are advancing

MASON JARS
BALL OR KERR
1/2-PINT DOZEN 75c
PINT DOZEN 80c
QUART DOZEN 95c
Jar Rubbers 25c
Jelly Glasses 39c
Glass Jar Tops 15c

BEER BROWN DERBY 4 Bottles 29c
Plus Deposit
Peaches 2 No. 2 1/2 29c
Libby's Sliced or Halves
Cocoa 9c 17c
Baker's Breakfast, 1/2-lb.
Lipton's Tea 39c
Yellow Label, 1/4-lb. 20c 1/2-lb.
Tomato Soup 2 FOR 9c
Van Camp's, 10 1/2-oz. Can
Salad Oil 25c
Durke's, Quart Can

BUTTER 24c
LA FRANCE CHOICE QUALITY
Quarted and Cut
EGGS 24c
LUCERNE LARGE FRESH EXTRAS Doz.

Certo 24c
Fruit Pectin, 8-oz. Jar
Pen Jel 10c
Powdered Pectin, 3-oz. Pkg.
Parowax 2 FOR 15c
In Handy 1-lb. Carton
Milani 19c
Chicken Noodles, 16-oz.
Tomatoes 10c
Silverdale Standard, No. 2 1/2 Can
Best Foods 28c
Mayonnaise, 1/2 Pint 10c; Pint 18c; Quart 28c

First Church of Christ, Scientist

TORRANCE, CALIFORNIA

ANNOUNCES A

FREE LECTURE

ON

CHRISTIAN SCIENCE

BY

Hon. William E. Brown, C.S.B.

OF

Los Angeles, California

Member of the Board of Lectureship of The Mother Church, The First Church of Christ, Scientist, in Boston, Massachusetts

To be delivered in

Masonic Temple, 1321 1/2 Sartori Ave.

Monday Evening, June 25, 1934 - 8 P.M.

The Public Is Cordially Invited to Attend.

Doors open at 7:30

Quality Meat Specials

HAM 14c
SWIFT'S PREMIUM CURANT'S PURITAN WILSON'S CERTIFIED
4-lb. Avg.-LB.
SHANK CUT BUTY CUT (4-lb. Avg.) 1 1/2c

BEEF 8c
FANCY STEER OR BABY BEEF
From 13 to 20 lbs. 15c 16 to 22c
Color Check 1 1/2c

PORK ROAST 12c
WHOLE SHOULDER OR SHANK CUT - PER LB.

Plate Rib Boiling Beef, Lb. 4c
Pure Lard or Shortening, 1-lb. Pkg. 8c
Pork Sausage Country Style, Bulk, Lb. 17c
Bacon Eastern Sliced Grade Any Firm Except Center Pkg. 19c
Colored Hens Fresh Dressed, Lb. 20c
Salmon Fresh, Lb. 25c
Cabra Bass Local Caught, Lb. 15c

Longhorn Cheese, Lb. 15c
Lunch Meats Assorted, Lb. 35c
Tamales Wilson's Certified 7 Tamales in Jar, Each 23c
Dill Pickles Large Jumbo, Each 5c
Cottage Cheese, Knudsen's, Lb. 13c
Pigs Feet Merrell's Pickled 1/2 Split Foot, Each 5c

Lima Beans No. 2 13c
stokely's Tiny Green Can

Asparagus 2 11-oz. Cans 25c
Stokely's All Green

Sardines King Oscar, No. 1/4 Can 12c
Homy Bab-O Cleanser No. 2 1/2 Can 8c
Stokely's Finest, No. 2 1/2 Can 8c
Wet-Me-Wet Pad Free 2 for 23c

Tomato Sauce 3 for 10c
Monte Rio, 8-oz. Can

Margarine Holiday Brand 2 for 15c

C.H.B. Pickles Sweet Sliced 1/2 8-oz. Jar 10c; qt. 17c
Whole Doz. Jar

Vinegar C.H.B. Cider, Pt. 10c; qt. 15c

Tobacco Prince Albert, 2-oz. 2 for 25c

Malt Syrup Blue Ribbon, 3-lb. Can 53c

Mushrooms Kennet Sliced, 2-oz. Can 10c

Pretzels Brown Derby, 12-oz. Pkg. 15c

PRICES EFFECTIVE IN LOS ANGELES METROPOLITAN AREA ONLY

Meat and produce values at Safeway and Piggly Wiggly operated departments only.

SAFEWAY and PIGGLY WIGGLY

We reserve the right to limit. None to dealers. Prices subject to change without notice.

THURSDAY, FRIDAY AND SATURDAY JUNE 21, 22 & 23