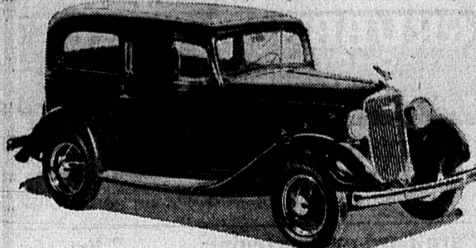


CHEVROLET ANNOUNCES NEW LOW PRICED LINE OF SIXES



1934 Chevrolet New Improved Standard Six Coach

Chevrolet today announced "the world's lowest priced six-cylinder car" with the introduction of the new improved 1934 Standard Six models, supplementing the Master Chevrolet models previously presented, according to Jack Hanson of the Torrance Motor Co., 1600 Cabrillo avenue.

Two closed and two open car models comprise the new improved standard line. They are the sport roadster, \$490; phaeton, \$530; coupe, \$510; and two-door sedan, \$520. The new cars, says the Chevrolet Motor Company's announcement, thus list under any other six on the market, and \$85 to \$95 under corresponding models of the Master Chevrolets.

The new cars are replete with major improvements designed to achieve better performance, riding qualities, comfort and appearance. Both chassis and body have been completely redesigned in keeping with the latest advance in engineering and styling.

Roadability, and especially stability, have been enhanced through the adoption of a wider chassis frame and more widely spaced leaf springs front and rear, in conjunction with a longer front axle and increased tread of the front wheels. These chassis improvements have permitted the use of big, roomy bodies having maximum width and ample leg room.

In the power plant, smoothness, economy and flexibility have been improved through the revision of the inlet and exhaust systems, with higher compression, and a refined valve and tappet mechanism, including a redesigned camshaft.

The new models share with the Master series such appearance features as sleek, flowing lines, deep fenders hugging the tires, long hood with horizontal louvers, and steeply inclined radiator grille. Numerous interior refinements similarly enhance the style and finish of the passenger compartments.

Smartly Styled
The exterior has been generally redesigned to add to style and utility. Deep front fenders, extending far over the tires, conceal unsightly chassis parts, with only a shallow "valley" remaining between fenders and hood. Front fenders are formed to extend to the center of the car under the radiator, eliminating the separate radiator splash guard. Fender skirts have been given sharp, graceful contours, making them appear to fit closely to the tires. Edges of the fenders have turned in flanges, for extra stiffness.

The re-styled front-end ensemble includes new designs for the hood and radiator grille. The hood is unusually long, and has three horizontal louvers. Front fenders, radiator and head lamps are supported as a unit on a stabilized mounting of improved design, insulated from the frame by a single centrally located rubber cushion. Running boards blend smoothly into the fenders, and are finished with a longer rubber mat, extending farther toward the rear. A most pleasing appearance has been gained in the instrument panel. It is wide at the center, the lower edge sweeping upward toward the ends in a graceful curve. The instrument group is enclosed in an embossed elliptical head, flanked by depressed panels. The steering wheel is 17 inches in diameter.

Closed car models are equipped with improved Fisher no-draft ventilation, and with a reversed flow ventilator, opening toward the rear, similar to the arrangement of the Master models.

Among the special structural features of the newly styled closed bodies are increased strength resulting from a new design of cowl braces and the bolted roof rail structure; and numerous improvements in the doors, which are equipped with an adjustable diagonal brace, shorter and sturdier hinges, improved dovetail and striking plates, and new half-round lock bolts. Other improvements have been effected in the windshield sealing, the door locks, and the streamlined outside door handles. The closed cars are wired for radio.

Roadster and Phaeton
The two open models, phaeton and sport roadster, are innovations in the domestic line on this chassis model. Both cars are gracefully streamlined and have the same type heavier-tail rear end as the closed models. The safety glass windshield is set at an angle of 25 degrees to prevent annoying glare. Seats, located so as to provide maximum leg room and a comfortable back angle, are finished in high grade imitation leather over double-acting springs with soft tops. Standard equipment on all models includes speedometer, electric gasoline gauge, oil gauge, am-

Lomita Homes Are Invaded By Death Last Week

Mrs. Emma Hall and Neal S. Brown Pass Away On Thursday

Mrs. Emma Jane Hall, age 75, wife of George W. Hall, 2212 256th street, Lomita, passed away at the home on Thursday, May 17. Mrs. Hall, a native of Southwick, England, had resided in the United States 49 years, for the past 21 years in Lomita.

Funeral services were held on Saturday, May 19, from Stone & Myers chapel, with Rev. E. E. Clark, of Eagle Rock, former pastor of the Lomita Community Presbyterian church, officiating. Members of the Pythian Sisters and Trio Rebekah lodges attended the services in a body. Cremation at Pacific Crest followed the services.

Mrs. Hall is survived by her widower, George W. Hall, two daughters, Mrs. Emma J. Forsyth, of Lomita, and Mrs. Adelaide S. Niblock, of Creswell, Oregon, and two brothers, Richard and William Jennings, of Douglas, Arizona.

Funeral rites were held Monday morning at 10 o'clock for Neal Stanton Brown, age 71, who passed away Thursday, May 17, at his home, 2101 245th street, Lomita, after a long illness. He was a retired rancher, and had lived 16 years in Lomita. Services were conducted by I. O. O. F. lodge of which he had been a member, with interment at Roosevelt Memorial Park. He is survived by his widow, Mrs. Margaret E. Brown.

FIRST CHRISTIAN
Engracia at Arlington avenues. Phone 77-M. George Elder, pastor. 9:30 a. m., the church school meeting in several assemblies with classes for every age.

Power Plant Refined
The new Standard power plant has been refined to give superior low-speed flexibility and cold operation, without sacrifice of economy or high-speed performance ability. The engine has a bore of 3 5/16 inches and stroke of 3 3/4 inches with a compression ratio of 5.85 to 1.

It has been improved and refined to minimize noise and to insure proper valve action. The camshaft diameter has been increased for greater rigidity. An additional spring has been introduced in each valve train, in the tappet to maintain constant contact between the operating parts at all speeds, and reduce the pressure on the valve seats. The tappet springs relieve the load, permitting the use of lighter springs for the valves themselves.

The seating surfaces at the ends of the push rod, in the tappet and on the adjusting screw, have been designed to give closer fit and greater bearing area. In the fuel system, the carburetor and the inlet and exhaust manifolds have been refined. Superior full-throttle operation is provided by a shrouded fuel nozzle which admits air into the gas stream, while a new idle adjustment, operative at speeds under 20 m. p. h., permits setting the carburetor for efficient low speed performance without risk of detracting from maximum performance and economy throughout the speed range. The exhaust manifold is fitted with a counterbalanced thermostatic heat control, in place of last year's manual adjustment, effecting a marked improvement in the low-speed and low-temperature operation of the engine.

An important development in engine cooling is the use of directional control in the use of stamped copper in the cylinder head, by which the circulating water, drawn from the coolest part of the system, is directed in jets against the seats of the exhaust valves. The exhaust valve seats thus are prevented from attaining extreme temperatures, and the life of the exhaust valve-seats and of the valves is prolonged by the increased freedom from pitting and warping.

Cushion-balanced engine mountings of new design, at four points, in combination with the new sub-frame, permit controlled flexibility of the engine, to shield the car from engine sensations and to insure smoothness. Braking Area
Braking has been revised to include double-articulated shoes and cable control, front and rear. Brake lining area has been increased to 121 3/16 sq. in., through the adoption of longer lower shoes. With the newly designed cable control of brake application, only one cross-shaft is used.

Clutch refinements insure smoother operation, lighter pedal pressure, and increased durability. The operating pressure of each spring is surprisingly low—32 1/2 pounds. Clutch and brake pedal mountings are carried on the frame to insure a stable support unaffected by the movement of the engine on its more flexible mountings. The hand brake lever is separate from the power-plant and is mounted on a bracket attached to the frame.

IF YOU SMOKE TOO MUCH WATCH YOUR STOMACH
For quick relief from indigestion and upset stomach due to excessive smoking and drinking try Dr. Emil's Adla Tablets. Sold on money back guarantee. Dole Drug Co.—Adv.



STONE and MYERS Funeral Directors

Licensed Embalmers
TORRANCE: Cravens at Engracia Telephone 195
LOMITA: 1204 Narbonne Ave. Telephone 347
AMBULANCE SERVICE

CHURCHES

"GO TO CHURCH SUNDAY!"

Church notices, to be assured of publication, should be in the Herald-News office before 10 a. m., Tuesday. Every effort is made to publish them all, but occasionally when they are late they must be omitted.

METHODIST EPISCOPAL CHURCH

El Prado and Manuel. Kemp J. Winkler, pastor. 9:45 a. m., church school hour. Leonard Snyder, superintendent. Classes for all ages.

11:00 o'clock, morning worship hour. Sermon by the pastor, "Keepers of the Springs." Girls of Job's Daughters will be special guests.

6:30 p. m., Epworth League hour for young people. 7:30 o'clock, evening service. An interesting program in observance of Memorial Day. The pastor will speak. Alice Burger will deliver her World Friendship oration on "Peace." Attractive musical program.

Thursday, May 31, father and son banquet, 6:30 p. m. Tickets 35 cents. Splendid program.

MEN'S BIBLE CLASS

A Bible class for the men of the community by the men of the community. Sessions held each Sunday morning at 9:30 o'clock at the Torrance Theatre. Harry F. Dierker, president, and Rev. G. G. Elder, teacher. All men are welcome.

ST. ANDREW'S EPISCOPAL CHURCH

1438 Engracia avenue. Rev. F. Murray Clayton, vicar, 1222 Engracia avenue, phone 617. Holy communion, 7:30 a. m. Church school, 9:30 a. m. Morning service, 11:00 o'clock. Woman's Guild meets the first and third Thursday of the month at 2:00 p. h. in the Guild hall.

CHURCH OF THE LATTER DAY SAINTS

Women's Club, 1422 Engracia. Harry Y. Jordan, bishop. Sunday morning, 10 a. m. of the Holy communion, 7:30 a. m. Church school, 9:30 a. m. Morning service, 11:00 o'clock. Woman's Guild meets the first and third Thursday of the month at 2:00 p. h. in the Guild hall.

CHURCH OF THE LATTER DAY SAINTS

Friday, Y. M. and Y. L. Mutual Improvement Association meets at 7:30 p. m.

SOUTH LOMITA CHURCH

The friendly church. Fundamentals, evangelistic. 2341 street, Lomita. T. C. Colwell, acting pastor. Sunday school, 9:30 a. m. Morning service, 11:00 o'clock. Young people's meeting, 6:30 p. m. Evening service, 7:30 o'clock. Teachers' lesson study and prayer meeting, Wednesday, 7:00 a. m., at 2341 255th street.

CATHOLIC CHURCH

Lomita boulevard. Father O'Keefe, pastor. Mass celebrated Sundays at 8:30 a. m.

SEVENTH DAY ADVENTIST

Weston and Walnut streets, Lomita. C. Phillips, elder. Sabbath school, 9:45 a. m. Preaching service, 11 a. m. Prayer meeting Wednesday at 7:30 p. m.

COMMUNITY INTERDENOMINATIONAL

2455 Hawthorne avenue, Waverly. H. A. Lasley, pastor. Sunday school, 9:45 a. m. Morning service, 11 o'clock. Evening service, 7:30 o'clock. Young people's service, 6:30 p. m. Wednesday, 7:30 p. m., prayer meeting.

CHRISTIAN SCIENCE CHURCHES

"Soul and Body" is the subject of the Lesson-Sermon on Sunday in all branches of The Mother Church, The First Church of Christ, Scientist, in Boston, Mass. Among the Bible selections in the Lesson-Sermon are these verses from Paul's second letter to the Corinthians: "For God, who commanded the light to shine out of darkness, hath shined in our hearts, to give the light of the knowledge of the glory of God in the face of Jesus Christ. For our light affliction, which is but for a moment, worketh for us a far more exceeding and eternal weight of glory; while we look not at the things which are seen, but at the things which are not seen: for the things which are seen are temporal; but the things which are not seen are eternal." A correlative passage from the Christian Science textbook, "Science and Health with Key to the Scriptures," by Mary Baker Eddy, states, "The Science of being reveals man as perfect, even as the Father is perfect, because the Soul, or Mind, of the spiritual man is God, the divine Principle of all being, a because this real man is governed by Soul instead of sense, by the law of Spirit, not by the so-called laws of matter."

IN ONE EMERGENCY YOUR TELEPHONE MAY BE WORTH MORE TO YOU THAN IT COSTS IN A LIFETIME



Swift. Dependable. Untiring.

YOU MAY never need to summon aid. You may never hear a prowler or the dread crackle of flames. Let's hope such emergencies never come to you. But are friends also for others? The pleasure of hearing their voices? The comfort of being in touch with those far and near. Telephone service costs little. It's value is so great that it simply doesn't pay to be without it.

Southern California Telephone Company
1266 Sartori Avenue Telephone Torrance 4600

Memorial Day Air Races Planned At Dycer Airport On Western Avenue



Here's Billy Cam's cartoon on a few of the highlights that can be expected at the Air Races to be staged Wednesday, May 30, with forty famous men and women fliers participating in closed course events around a sensationally spectacular triangle. They are being staged by the West Coast Air Racing Association at that organization's speedway Tuesday, May 30, at 1 p. m. The airport is on Western avenue, just south of Manchester. Lloyd Mitchell offices are handling the advance sales.

Good News!

Our Big Mid-Week Sale
Continues for 2 More Days!

ASSOCIATED AGROCCERS

INDIVIDUALLY OWNED STORES

... with these additional Specials for Fri. and Sat.

Crackers 14¢

BETTER BEST SODA or GRAHAM, Lb. Pkg.

- GRAPE NUTS16c
- SWANSDOWN FLOUR24c
- LOG CABIN SYRUPsmall 21c; med. 39c

Grape Juice 25¢

CHURCH'S, Quarts

- Aunt Jemima Pancake Floursm. 10c; lge. 20c
- KIPPERED SNACKS5c
- SARDINESlb. oval can 10c

24 Clothes Pins with LaFrance Powder 3 Pkgs. 25¢

- No. 2 1/2 can Warranty White Meat Fish10c (TUNA STYLE)
- CRYSTAL WHITE SOAP2 for 5c
- PEET'S GRANULATED SOAP23c

WIN A Ivory Soap 5¢ CAR!

Ask Us About Details. Small...

- PALMOLIVE SOAP5c
- SUPER SUDS2 for 15c
- SANKAlb. 42c

- BLACK SWAN—
Apricots No. 2 1/2 Cans 2 cans for 25c
- BLACK SWAN—
Spinach No. 2 Can per can 11c

Save BLACK SWAN LABELS. WE PAY 1¢ IN CASH FOR EVERY 2 LABELS

- WOODBURN'S
1801 Cabrillo Avenue, Torrance, Phone 175
- DOAN'S MARKET
2223 Torrance Blvd., Torrance, Phone 486
- G. H. COLBURN
645 Sartori Avenue, Torrance, Phone 622

MUMPS HALTED PLAY OF YOUTHFUL GIRL GOLFER

ATLANTA, Ga. (U.P.)—Mumps prevented the 14-year-old Georgia state women's golf champion from participating in the recent Southern Women's tournament at New Orleans.

Little Dorothy Kirby, 11-year-old state champion, lost so much time in school as a result of a four-week battle with the mumps that her parents decided she could not afford to lose more school work by participating in the Southern tournament.

Baby Fills Palm of Hand
THE DALLES, Ore. (U.P.)—Nathaniel McDaniel Moore, who deposited his name weighs only two pounds, is attracting much interest from The Dalles residents. The baby just fills the palm of an adult's hand. He takes nourishment through an eye dropper.

Negro Cook Given Diploma
FARMVILLE, Va. (U.P.)—In recognition of his 50 years of service at State Teachers College here, Philip Ward, Negro head cook, has been presented a diploma. He is the only employee who has been with the college constantly since it was founded.

SURE-FIRE

Get your ad in the Classified. Inexpensive, condensed and Sure-Fire.

GOODBYE FLAT TIRES



NEW-TYPE INNER TUBE Self-Seals Punctures INSTANTLY!

Imagine a tube like this! You can plug it full of holes. Hammer nails into any tire equipped with it. Yet when you pull them out, the punctures seal themselves—without losing the air!

LOW IN COST!
Stop worrying about "flats". Save tire and tube repair bills. Avoid road delays. The remarkable new Goodrich Seal-o-matic Safety Tube is much tougher—specially-reinforced to resist chafing. Yet it costs only slightly more than ordinary tubes. Let us put a set in your tires today.

Goodrich Seal-o-matic Safety Tube

Harvel's

1618 Cravens Avenue
Phone 168 - Torrance