

Mother deserves more than a routine gift

Be individual—choose the ONE Gift every mother needs and wants—lovely

HOLEPROOF HOSIERY

Gift Packed for Mothers' Day

\$1.00 pair

Mother's Day Sunday, May 13th



Better Fabrics Testing Bureau Hosiery

New gift buying chart guides anyone to just the style and color she'll prefer

If you know what colors Mother wears, we'll guarantee to give you hosiery that will harmonize. Ask to see color guide for easy buying at hosiery counter.

Just Arrived... "KNEE HIGH" By HOLEPROOF... The Most Exciting Hosiery Innovation In Years!

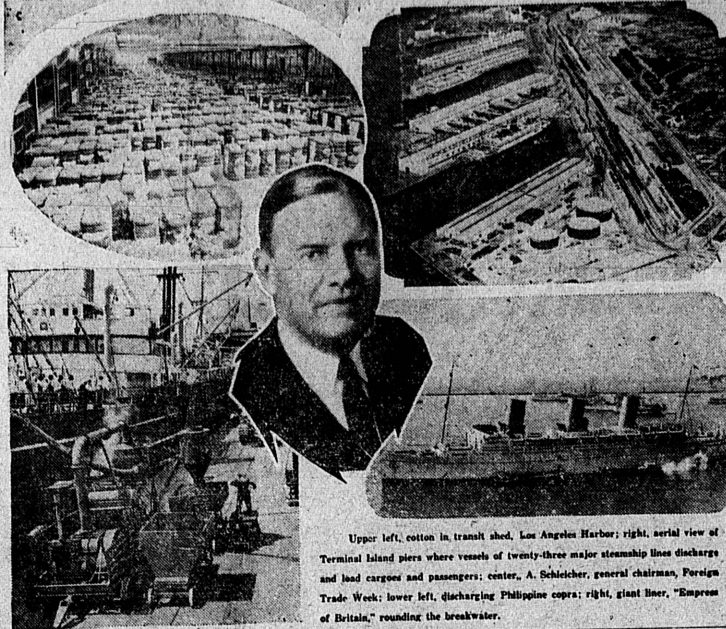
Knee-length, and self-supporting, because of its flat knit garter-top. Smarter than socks—cooler than stockings! New comfort and freedom from: (1) "burst" knees when you kneel, (2) garter-runs when you stretch. Just Arrived \$1.00 Pair.



SAM LEVY

1311-13 Sartori Torrance

VISIT YOUR HARBOR NEXT WEEK



Upper left, cotton in transit shed, Los Angeles Harbor; right, aerial view of Terminal Island piers where vessels of twenty-three major steamship lines discharge and load cargo and passengers; center, A. Scheiber, general chairman, Foreign Trade Week; lower left, discharging Philippine coops; right, giant liner, "Empress of Britain," rounding the breakwater.

Eighth Annual Foreign Trade Week Observed

Activities Start Next Monday With Luncheon At Biltmore

Activities in connection with the eighth annual observance of Foreign Trade Week will start next Monday, May 14, with a colorful luncheon meeting at the Biltmore Hotel, Los Angeles, and continue through to May 22.

Planned as a special educational feature for the general public, a celebration is to be held Saturday, May 19, at Los Angeles harbor. Ships in port on that date are to be decorated with flags and thrown open to visitors. Free boat trips around the harbor will be available to all through the courtesy of the harbor department from noon to 4 p. m. and tickets may be obtained by applying to the Marine Department of the Los Angeles Chamber of Commerce.

The closing event, on National Maritime Day, May 22, is a joint luncheon of the Los Angeles Steamship Association and the Ad Club, with Roger D. Lapham, president of the American Hawaiian Steamship Company, scheduled to talk on "The American Merchant Marine."

Jump In County Tax Rate May Be Expected For Next Year

With the salary budgets of county department heads being studied by the bureau of efficiency for possible savings, indications were today that Los Angeles county taxpayers may expect an increase of between 20 and at least 50 cents per \$100 of assessed valuation on their general county rate for 1934-35.

Pyramiding of Assessments Is Upheld By Court

Supreme Court Hands Down Decision On Matter Important to Taxpayers

Overburdened taxpayers throughout Los Angeles county who have been assured from time to time that steps were being worked out to afford them relief in special assessment districts, were given a jolt by a decision of the California supreme court just placed on file today in Los Angeles.

The decision holds that boards of supervisors and city councils are required to pyramid special assessments and to levy for delinquencies against all properties in the old Mattaponi Act districts and in three others.

The Road District Improvement Act of 1907, the Municipal Improvement District Act of 1915 and the Municipal Improvement District Act of 1927.

"The evil complained of is inescapable in any ad valorem tax," the supreme court opinion reads. "The decision, rendered in a San Diego case, gives the bondholder the right by legal action to force pyramiding. The supreme court said that it had considered the hardship which may result from the decision."

Business Upturn In 1934 Shown By Gas Co. Statement

Southern California Gas Company, reporting for the 12 months ended March 31, 1934, shows a decrease of \$19,807 in balance after fixed charges, compared with the 12 months ended March 31, 1933, and a decrease of nearly \$450,000 from the showing for the calendar year 1933.

Gross operating revenue for the 12-month period ended March 31 of this year was \$12,982 in excess of the total for the like period last year, but declined \$38,547 from the gross reported for the year ended December 31, 1933. Operating expenses totaled \$7,199,457 in the 12 months ended March 31, 1934, against \$7,398,094 for the comparable period of 1933. Taxes, amounting to \$1,676,056, increased \$189,621 over the preceding period.

SALOON WOOD FOR CHURCH
HAMBURG, Ark. (U.P.)—The walls that housed the old Senate Club saloon, landmark of Hamburg, soon will house the Presbyterian Church of Mist, eight miles from here.

The saloon is being razed and the material hauled to Mist to construct the church.

Earn 4% ON YOUR SAVINGS



TROOP 4 LEE BURNS, Reporter

Charles Grubb won inspection and received a pass to the Torrance theatre.

Frank Steinhilber, former Scoutmaster of Troop No. 4, two years ago, gave an interesting talk to the boys on camping at the last meeting. He spoke about the new camp at Big Pines, which will be owned by the Torrance troops and which will be ready for use this summer.

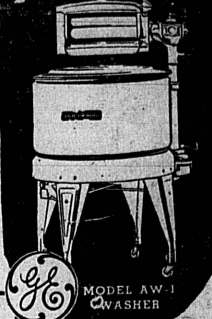
The Mothers Auxiliary met at the home of Mrs. Dowell the past week.

Member Federal Home Loan Bank Torrance Mutual Building and Loan Association Sartori at El Prado

Here's what we are Selling...

A COMPLETE G-E HOME LAUNDRY

At an unbelievably low price BOTH FOR \$74.50 \$5.00 Down



We claim that this home laundry combination will save you... TIME, WORK, MONEY, AND CLOTHES.



PROVE IT IN YOUR OWN HOME

Star Furniture Co. 1273 Sartori Ave., Torrance PHONE 620 "WE CHALLENGE CITY PRICES!"

ASSOCIATED AGROCCERS INDIVIDUALLY OWNED STORES

"Make Mother's Day a Holiday for Her!"

Nothing would please Mother more on Mother's Day than to find her pantry generously stocked with foodstuffs such as those suggested here. In addition to stocking her kitchen, why not prepare and serve the three meals on Mother's Day yourself? Your 4 "A-G" Stores will help out with suggestions.

Sugar 10 Lbs. for 45¢

Globe Assorted Pure Jam, lb. glass.....	15c	Bacon, Swift Oriole Sliced, lb.....	25c
Pink Salmon, No. 1 tall can, 2 for.....	25c	Mother's Cocoa, 2-lb. can.....	18c
Jell Well, 2 pkgs.....	9c	Puffed Wheat, pkg.....	9c

Butter Brookfield 23¢ Per Pound

Puffed Rice, pkg.....	12c	Minute Tapioca, pkg.....	11c
Certo, per. bottle.....	24c	Hypro Bleach, qt. bot.....	7c
Post Toasties, 3 pkgs.....	25c	Doggie Dinner, 3 for.....	25c

Coffee HILLS Blue 25¢ Can, lb.

Gold Medal "Sun-Vite" Spag. or Mac., 8-oz. pkg., 2 for.....	15c
French's Bird Seed, 2 pkgs.....	25c
Bird Gravel, 2 for.....	15c

Milk BESS BRAND Tall Cans 3 for 17¢

FREE 2-cup pkg. Swansdown with lb. can Calumet Baking Powder..... 25c

DINA-MITE..... 1 1/2-lb. pkg. 22c

Black Swan Iowa Corn, No. 2 can..... 10c
Black Swan Peaches, No. 2 1/2, 2 cans..... 25c

Save BLACK SWAN LABELS. WE PAY 1¢ IN CASH FOR EVERY 2 LABELS

YOUR FOUR "A-G" STORES:
HARDER'S MKT. 1521 Madrid, Phone 348
WOODBURN'S 1801 Cabrillo, Phone 175
G. H. COLBURN 645 Sartori, Phone 622
DOAN'S MKT. 2223 Torrance Blvd. Phone 466

Read Our Want Ads!

YOUR BLOW-OUT.. TOMORROW?



PLAY SAFE WITH GOLDEN PLY TIRES!

Let us put this life-saving tire on your car... amazing invention prevents great cause of blow-outs

EVERY YEAR thousands are killed or injured when blow-outs throw cars out of control. Today, unless you are protected, the danger from blow-outs is greater than ever before. High-powered motors, whirlwind revolutions of smaller modern wheels, cause terrific heat inside the tires. Rubber and fabric tend to separate. A tiny heat-blister forms, grows... bigger... BIGGER... until BANG! A blow-out. You can't steer. You can't stop. Only luck decides where you land.

Don't let your life depend on luck. An amazing new invention now gives you blow-out protection. The Life-Saver Golden Ply, found only in the new Goodrich Silvertown, resists internal heat. Binds tire carcass and tread virtually into a single unit, inseparable even under tests far more punishing than ordinary driving conditions. Thus, heat-blisters don't form. Blow-outs are prevented by overcoming their great, unseen cause.

TIRES LAST MONTHS LONGER

With destructive internal heat controlled, tire mileage jumps. Racing daredevils tested the Golden Ply at breakneck speeds. Gave it everything they had. Not one blow-out. Similar tires without this feature failed at one-third the distance the Golden Ply Silvertowns were run. And what's more the Golden Ply Silvertowns kept right on eating up the miles.

NO EXTRA COST TO YOU

The new Goodrich Safety Silvertown with the Life-Saver Golden Ply costs no more than other standard tires! Come in and let us show you how little it costs to put this protection on your car, before you have a dangerous blow-out.



PRICED AS LOW AS \$7.85 4.50 x 20 Subject to change without notice and to any governmental tax or law.

The NEW Goodrich Safety Silvertown WITH LIFE-SAVER GOLDEN PLY Harvel's 1618 Cravens Ave. Phone 168 Torrance Calif.